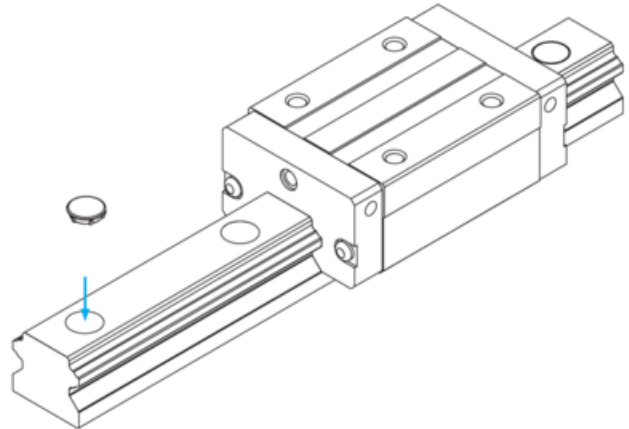


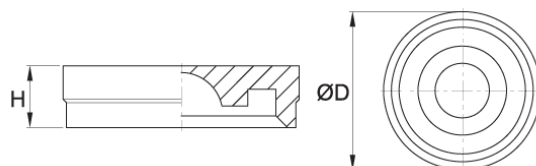
## RC Cap

Contaminants invade into the bolt holes of the rail and pollute the inside of the bearing. You can use hole caps made from hardened rubber to fill the holes. RC caps are provided with the rails.

Dimensions in mm.



## Dimensions



Designation	Compatible with	H	D
<b>RC 15</b>	SBI 15	1.3 (±0.1)	7.6 (±0.1)
<b>RC 20</b>	SBI 20	3.5 (±0.1)	9.6 (±0.1)
<b>RC 25</b>	SBI 25	2.8 (±0.1)	11.1 (±0.1)
<b>RC 30</b>	SBI 30, 35	3.7 (±0.1)	14.2 (±0.1)
<b>RC 45</b>	SBI 45	4.7 (±0.1)	20.2 (±0.1)
<b>RC 55</b>	SBI 55	6 (±0.1)	23.2 (±0.1)
<b>RC 65</b>	SBI 65	6 (±0.1)	26.2 (±0.1)