

ARC ML

Slim, long block with and without ball chain. ARC55ML is without ball chain.

For high load applications or any application where severe chock-loads may occur, the standard version offers better safety margins by its higher static limit (C0). For light to medium loads where a very long lifetime is required, the ball-cage will show superior life span and reliability.

Please note that ball chain versions must never be used for linear speeds exceeding 3 m/s!

Size 20 – 55 delivered with angled standard nipple.

Lubrications injections ports on the block:

N1: Front of the block. All blocks are delivered with front mounted standard grease nipple.

N2: Side of the block. The side lubrication injection port is sealed on delivery to prevent leakage of lubrication.

N3: Top of the block with an O-ring seal. The top lubrication injection port is sealed on delivery to prevent leakage of lubrication.

Dimensions in mm.

Lead times in the table below are only indications. Choice of preload, accuracy class and other options will affect lead time. Please contact us for exact delivery time for your request.

For more information about calculation of life, load rating and static moment see Technical information.



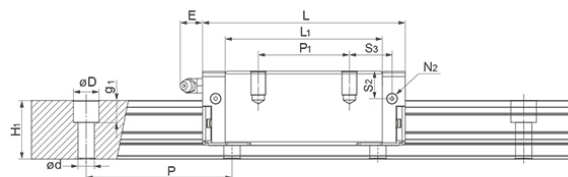
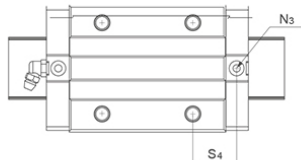
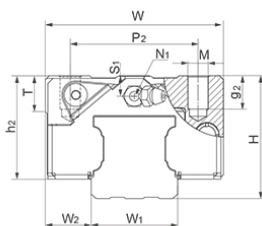
General Data



Designation	Remark	Dynamic Load Capacity C (N)	Static Load Capacity C0 (N)	Static Moment Mp0 (Nm)	Static Moment Mr0 (Nm)
ARC20ML	-	20400	38500	390	415
ARC30ML	-	39600	70200	950	1105
ARC35ML	-	54700	106500	1755	2185
ARC45ML	-	89500	169100	3460	4430
ARC55ML	No ball chain	147000	226000	5284	6472

Designation	Static Moment My0 (Nm)	Dynamic Moment Mr (Nm)	Dynamic Moment Mp (Nm)	Dynamic Moment My (Nm)	Weight Block (g)
ARC20ML	330	220	207	175	330
ARC30ML	950	623	536	536	1138
ARC35ML	1755	1122	901	901	1536
ARC45ML	3460	2345	1831	1831	3160
ARC55ML	5284	4210	3437	3437	5083

Dimensions



****E:** Size 15 delivered with straight standard nipple.
Size 20 – 55 delivered with angled standard nipple.

Designation	L	H	W	L1	H1	h2	W1	W2	S1
ARC20ML	87.2	28	42	70.2	20	23	20	11	4
ARC30ML	118	42	60	94	27	35.2	28	16	8.7
ARC35ML	136.6	48	70	111.6	32	40.4	34	18	8
ARC45ML	171.5	60	86	138.5	39	50.7	45	20.5	11.1
ARC55ML	202	70	100	160	45.7	58	53	23.5	13.5

Designation	S2	S3	S4	E	T	N1	N2	N3	M x g2	D x d x g1
ARC20ML	7.4	15.6	16.3	10	8	M3x7.5	M3x5.5	P4	M5x7	9.5 x 6 x 8.5
ARC30ML	12	21.7	21.7	12	12	M6x8.5	M6x5	P5	M8x10	14 x 9 x 12
ARC35ML	15	25.1	25.8	12	14	M6x10	M6x7	P5	M8x13	14 x 9 x 12
ARC45ML	18.1	35	35	14	14	PT1/8x12.5	M6x10.5	P5	M10x17	20 x 14 x 17
ARC55ML	23.5	41.5	40.5	12	16	M6x10	M6x13	P5	M12x20	24 x 16 x 20

Designation	P1	P2	Hole Pitch (P)
ARC20ML	45	32	60
ARC30ML	60	40	80
ARC35ML	72	50	80
ARC45ML	80	60	105
ARC55ML	95	75	120