

ARC FN

Flanged type block with low height, with and without ball chain.

For high load applications or any application where severe chock-loads may occur, the standard version offers better safety margins by its higher static limit (C0). For light to medium loads where a very long lifetime is required, the ball-cage will show superior life span and reliability.

Please note that ball chain versions must never be used for linear speeds exceeding 3 m/s!

Size 15 delivered with straight standard nipple.

Size 20 – 35 delivered with angled standard nipple.

Lubrications injections ports on the block:

N1: Front of the block. All blocks are delivered with front mounted standard grease nipple.

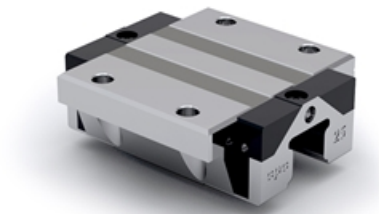
N2: Side of the block. The side lubrication injection port is sealed on delivery to prevent leakage of lubrication.

N3: Top of the block with an O-ring seal. The top lubrication injection port is sealed on delivery to prevent leakage of lubrication.

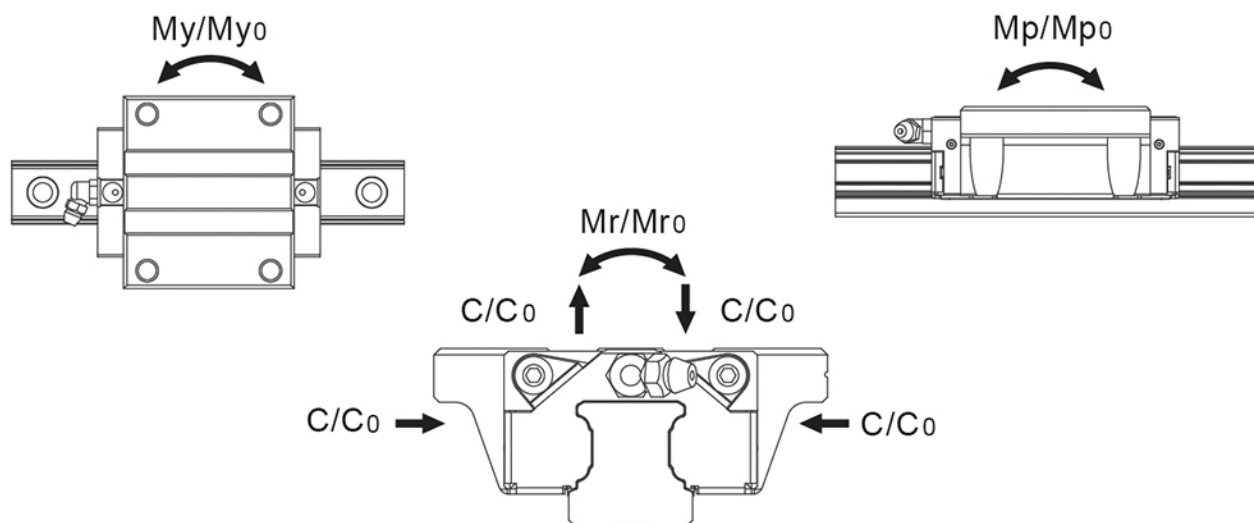
Dimensions in mm.

Lead times in the table below are only indications. Choice of preload, accuracy class and other options will affect lead time. Please contact us for exact delivery time for your request.

For more information about calculation of life, load rating and static moment see Technical information.



General Data



Designation	Dynamic Load Capacity C (N)	Static Load Capacity C0 (N)	Static Moment Mp0 (Nm)	Static Moment Mr0 (Nm)	Static Moment My0 (Nm)
ARC15FN	9900	17500	105	140	105
ARC20FN	17100	30000	230	325	230
ARC25FN	24800	42500	385	540	385
ARC30FN	32800	53700	565	845	565
ARC35FN	45900	82900	1080	1700	1080

Designation	Dynamic Moment Mr (Nm)	Dynamic Moment Mp (Nm)	Dynamic Moment My (Nm)	Weight Block (g)
ARC15FN	79	59	59	200
ARC20FN	185	131	131	336
ARC25FN	315	225	225	524
ARC30FN	516	345	345	1200
ARC35FN	941	598	598	1580

Dimensions



*M1: Bolt size for bottom mounting type of block
 **E: Size 15 delivered with straight standard nipple.
 Size 20 – 55 delivered with angled standard nipple.

Designation	L	H	W	L1	H1	h2	W1	W2	S1
ARC15FN	55.5	24	52	40.3	15	20.7	15	18.5	4.5
ARC20FN	69	28	59	52	20	23	20	19.5	4
ARC25FN	81.2	33	73	62.5	23	27	23	25	5
ARC30FN	95.5	42	90	71.5	27	35.2	28	31	7.5
ARC35FN	111.2	48	100	86.2	32	40.4	34	33	8

Designation	S2	S3	S4	E	T	N1	N2	N3	M x g2	M1
ARC15FN	7.5	8.9	10.9	5.3	7	M3x6.5	M3x6	P3	M5x7	M4
ARC20FN	7.4	13	13.7	10	10	M3x7.5	M3x5.5	P4	M6x10	M5
ARC25FN	9.3	16.6	17.6	12	12	M6x7.5	M3x6.5	P4	M8x12	M6
ARC30FN	12	20.8	20.5	12	15	M6x8.5	M6x5	P5	M10x15	M8
ARC35FN	15	23.4	24.1	12	15	M6x10	M6x7	P5	M10x15	M8

Designation	D x d x g1	P1	P2	Hole Pitch (P)
ARC15FN	7.5 x 4.5 x 5.3	26	41	60
ARC20FN	9.5 x 6 x 8.5	32	49	60
ARC25FN	11 x 7 x 9	35	60	60
ARC30FN	14 x 9 x 12	40	72	80
ARC35FN	14 x 9 x 12	50	82	80