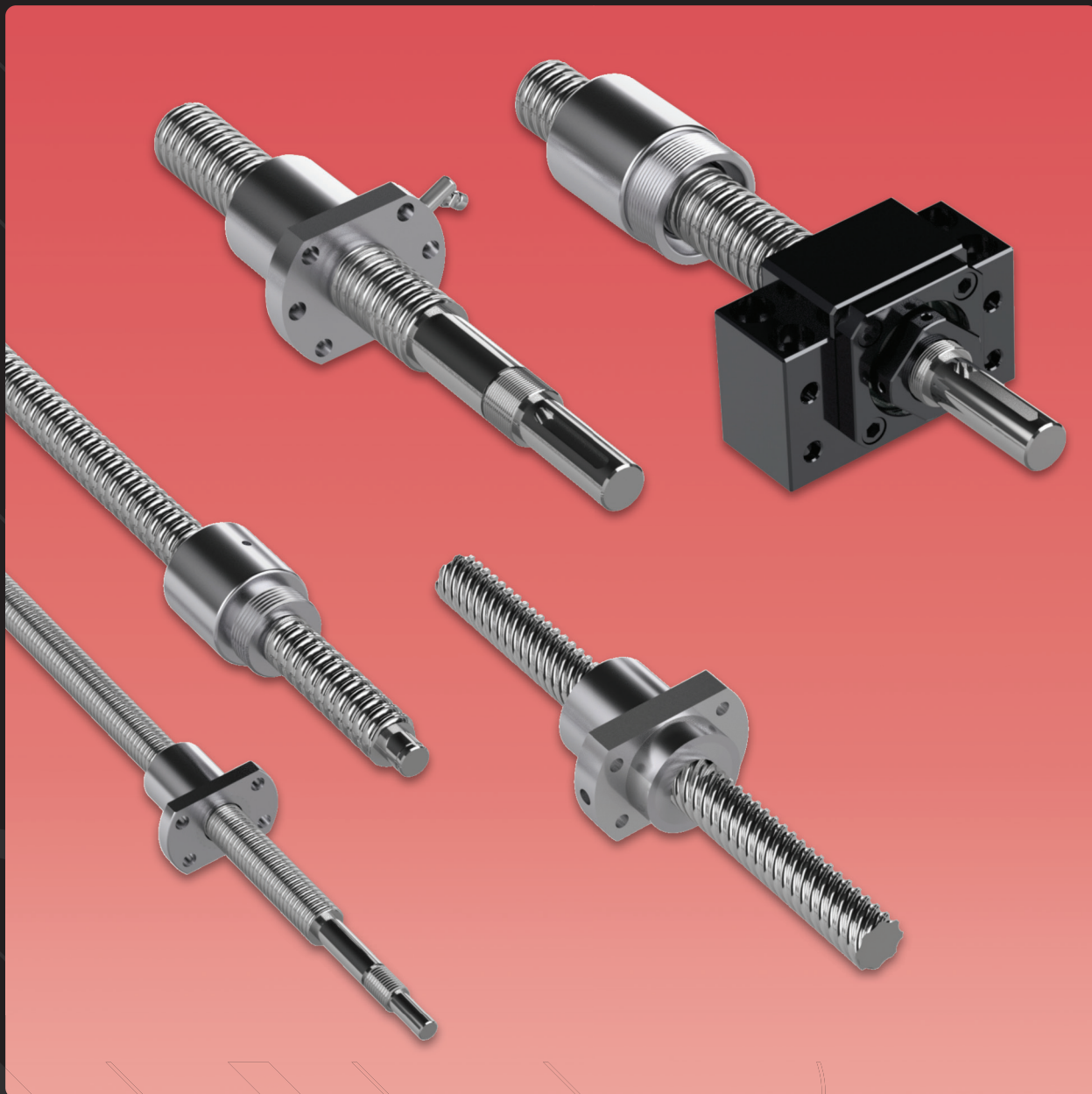


BALL SCREWS



ROLLCO

SPECIALIZED
ON LINEAR MOTION

Every care has been taken to ensure the accuracy of the information contained in this catalogue, but no liability can be accepted for any errors or omissions. We reserve the right to make changes without prior notice.

Any reproduction, even partial, is allowed only by written permission by Rollco.



**CLIMATE
COMPENSATED
PAPER**



Index

PRODUCT OVERVIEW	4
PRODUCT RANGE	5
Type SFKR	5
Type RSKR	6
Type RSCR	7
Type FSCR	8
Type FSER	9
Type SFYR	10
Type FDCR	11
ORDER CODE	12
ACCESSORIES	13
Safety Nut Type SNFSCR	13
Lock Nuts RN/RN..W	14
Housings for FSCR - Type RNB	15
Support Unit Type BKN	16
Support Unit Type BFN	17
Support Unit Type FKN	18
Support Unit Type FFN	19
Support Unit Heavy Load Type WBK..DF/WBK..DFF	20
Load Capacity of Support Units	21
STANDARD END JOURNALS	24
TECHNICAL INFORMATION	28
Lead and Travel Accuracy	28
Pre-load and Clearance	29
Mounting Methods	31
Life Calculation	34
Static Loads	35
Angular Acceleration	36
Torque and Force	36
Lubrication	37

Product Overview

Ball screws are used when a rigid and precise linear driving with high efficiency and intensity is required. Depending on required force, speed and durability, different diameters and leads can be selected. As a ball screw is based on the same load carrying principles as a ball bearing, the life time is possible to calculate in similar ways. Within its life time, there are practically no wear or loss of precision.

The Rollco product range in this catalogue is based on rolled ball screws. Rolled ball screws offer the best price-performance for automation, handling and light machine tool needs.

Rigidity

A ball screw is magnitudes more rigid than for example timing belts and chain drives. For optimal rigidity, a preloaded ball nut and end bearing unit should be used.

Precision

Due to its rigidity in combination with the high lead accuracy, the precision of a ball screw drive is in the 1/10 to a 1/1000 of a millimetre depending on selected play or preload.

Efficiency

Due to rolling friction between screw shaft and ball nut, the practical efficiency of a ball screw is between 80 – 90%. This saves energy and motor size. It also allows high intensity as the power losses (waste heat) is 5 to 10 times lower compared to trapezoidal screws.

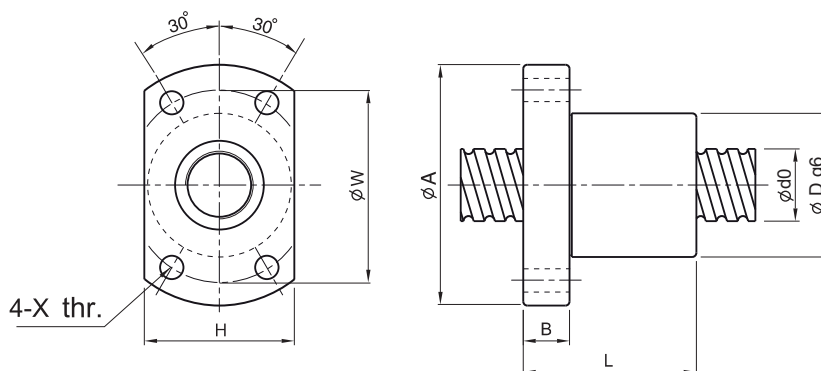
Durability

A correct selected and maintained ball screw have a very long and predictable service life. Compared to many other linear drive mechanisms, there is practically no gradual loss of performance or precision during the service life.



Type SFKR

Single Nut with Flange, Miniature



l: Lead

Da: Ball diameter

n: Turns x circuits

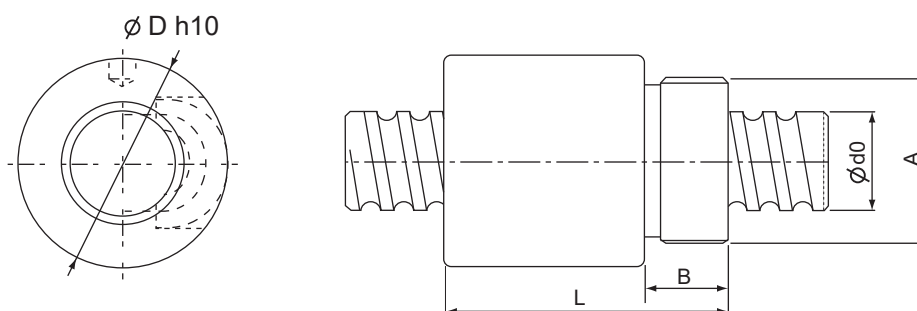
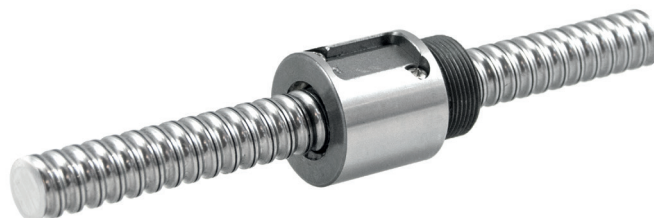
All other dimensions in mm.

Designation	Dimensions											Basic load ratings (N)	
	d0	l	Da	D	A	B	L	W	H	X	n	C _a	C _{0a}
SFKR0601	6	1	0,8	12	24	3,5	15	18	16	3,4	1 x 3	1110	2240
SFKR0801	8	1	0,8	14	27	4	16	21	18	3,4	1 x 4	1610	4030
SFKR1002	10	2	1,2	18	35	5	28	27	22	4,5	1 x 3	2430	5690
SFKR1202	12	2	1,2	20	37	5	28	29	24	4,5	1 x 4	3340	9060
SFKR1402	14	2	1,2	21	40	6	23	31	26	5,5	1 x 4	3540	10530

Standard nuts are with scrapers. Other types on request.

Type RSKR

Single Nut, Cylindrical with Thread



l: Lead

Da: Ball diameter

n: Turns x circuits

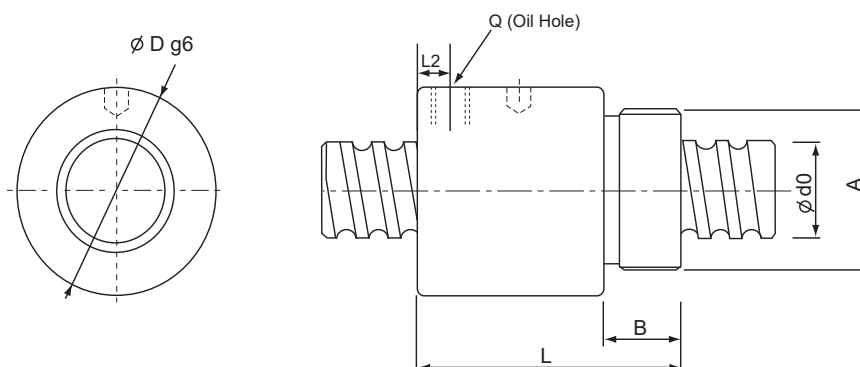
All other dimensions in mm

Designation	Dimensions								Basic load ratings (N)	
	d0	l	Da	D h10	L	A	B	n	C _a	C _{0a}
RSKR082,5	8	2,5	1,2	17,5	26	M15 x 1	7,5	1 x 2,5	2109	2345
RSKR1204	12	4	2,381	25,5	34	M20 x 1	10	1 x 3,5	6327	6798
RSKR1605	16	5	3,175	32,5	42	M26 x 1,5	12	1 x 3,5	10291	11223

Standard nuts are without any seals or scrapers. Other types on request.

Type RSCR

Single Nut, Cylindrical with Thread, Internal Recirculation



l: Lead

Da: Ball diameter

n: Turns x circuits

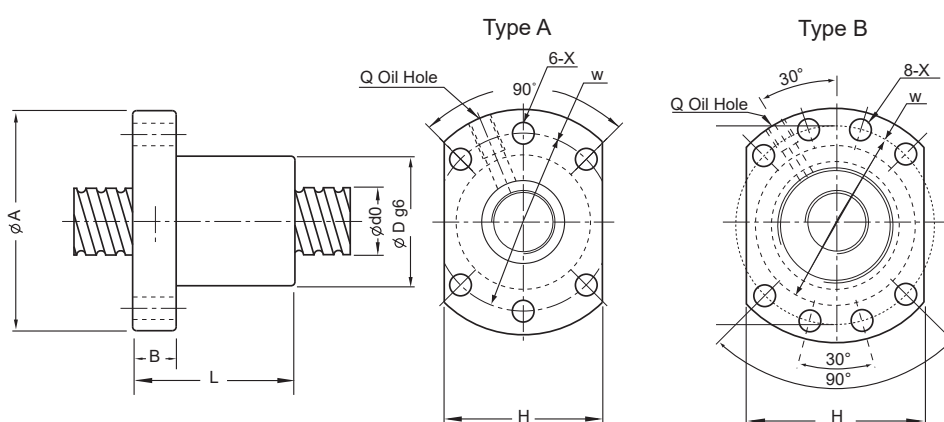
All other dimensions in mm.

Designation	Dimensions										Basic load ratings (N)	
	d0	l	Da	D	L	A	B	L2	Q	n	C _a	C _{0a}
RSCR1605	16	5	3,175	32	56	M30 x 1,5	16	6,5	M6	1 x 4	13185	14960
RSCR2005	20	5	3,175	38	59,5	M35 x 1,5	16,5	7	M6	1 x 4	14833	19571
RSCR2505	25	5	3,175	42	60	M40 x 1,5	17	7	M6	1 x 4	16716	25320
RSCR2510	25	10	4,762	42	90	M40 x 1,5	17	10	M6	1 x 4	28263	36248
RSCR3205	32	5	3,175	52	60	M48 x 1,5	19	7	M6	1 x 4	18874	33383
RSCR3210	32	10	6,35	52	93	M48 x 1,5	19	12	M6	1 x 4	47422	76861
RSCR4005	40	5	3,175	58	59	M56 x 1,5	19	6	M8	1 x 4	21003	35081
RSCR4010	40	10	6,35	65	102	M60 x 2	27	12	M8	1 x 4	52964	98826
RSCR5010	50	10	6,35	78	104	M72 x 2	29	12	M8	1 x 4	58203	120791

Standard nuts are with oil-seals.

Type FSCR

Single Nut with Flange (DIN 69051)



l: Lead

Da: Ball diameter

n: Turns x circuits

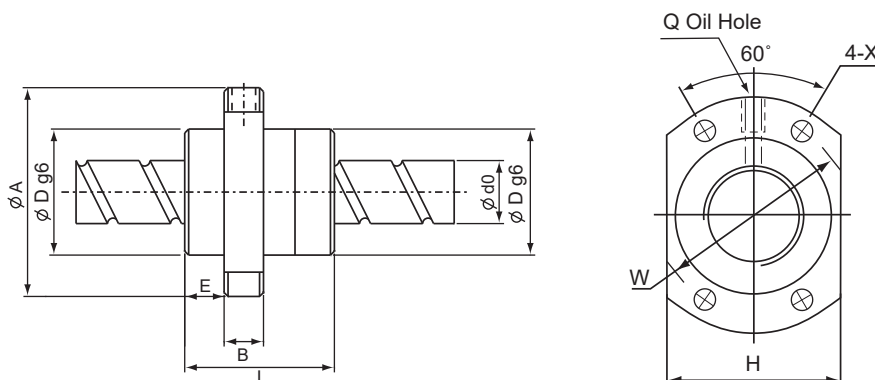
All other dimensions in mm.

Designation	Dimensions													Basic load ratings (N)	
	d0	l	Da	D	A	B	L	W	X	Type	H	Q	n	Ca	Coa
FSCR1605	16	5	3,175	28	48	10	50	38	5,5	A	40	M6	1 x 4	13185	14960
FSCRN1610	16	10	3,175	28	48	12	43	38	5,5	A	40	M6	3 x 1	11576	14676
FSCR2005	20	5	3,175	36	58	10	53	47	6,6	A	44	M6	1 x 4	14833	19571
FSCL2005	20	5	3,175	36	58	10	34	47	6,6	A	44	M6	4 x 1	14833	19571
FSCR2505	25	5	3,175	40	62	10	53	51	6,6	A	48	M6	1 x 4	16716	25320
FSCR2510	25	10	4,762	40	62	12	85	51	6,6	A	48	M6	1 x 4	28263	36248
FSCR3205	32	5	3,175	50	80	12	53	65	9	A	62	M6	1 x 4	18874	33383
FSCL3205	32	5	3,175	50	80	12	53	65	9	A	62	M6	1 x 4	18874	33383
FSCR3210	32	10	6,35	50	80	16	90	65	9	A	62	M6	1 x 4	47422	76861
FSCR3220	32	20	3,969	50	80	13	78	65	9	A	62	M6	3 x 1	21003	35081
FSCR4005	40	5	3,175	63	93	16	56	78	9	B	70	M8	1 x 4	21013	42595
FSCR4010	40	10	6,35	63	93	18	93	78	9	B	70	M8	1 x 4	52964	98826
FSCR4020	40	20	5,556	63	93	15	83	78	9	B	70	M8	3 x 1	37101	63451
FSCR5010	50	10	6,35	75	110	18	93	93	11	B	85	M8	1 x 4	58203	120791
FSCR6310	63	10	6,35	90	125	18	98	108	11	B	95	M8	1 x 4	65727	159216
FSCR6320	63	20	9,525	95	135	20	138	115	13,5	B	100	M8	1 x 3	87868	176040

Standard nuts are with oil-seals.

Type FSER

Single Nut with Flange, Long Lead



l: Lead

Da: Ball diameter

n: Turns x circuits

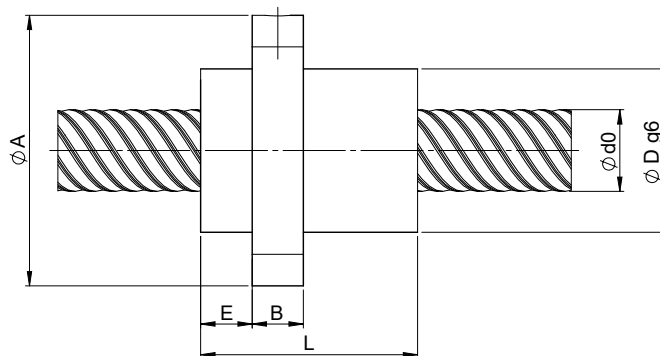
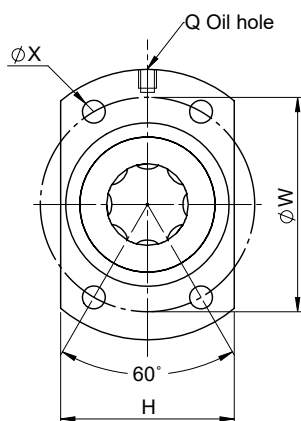
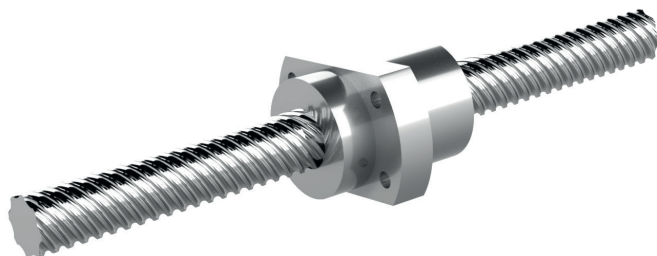
All other dimensions in mm.

Designation	Dimensions												Basic load ratings (N)		
	d0	l	Da	D	A	B	E	L	W	X	H	Q	n	C _a	C _{0a}
FSER1616	16	16	3,175	32	53	10	10,5	48	42	4,5	38	M6	1.8 x 2	14833	19571
FSER2020	20	20	3,175	39	62	10	10,8	55	50	5,5	46	M6	1.8 x 2	16275	24172
FSER2525	25	25	3,969	47	74	12	11,2	67	60	6,6	56	M6	1.8 x 2	24339	37778
FSER3232	32	32	4,762	58	92	15	14,0	82	74	9,0	68	M6	1.8 x 2	35169	59557
FSER4040	40	40	6,350	73	114	17	17,0	100	93	11,0	84	M6	1.8 x 2	56682	115297
FSER5050	50	50	7,938	90	135	20	21,5	125	112	14,0	92	M6	1.8 x 2	86514	188754

Standard nuts are with oil-seals. Other types on request.

Type SFYR

Single Nut with Flange, Overlead



l: Lead

Da: Ball diameter

n: Turns x circuits

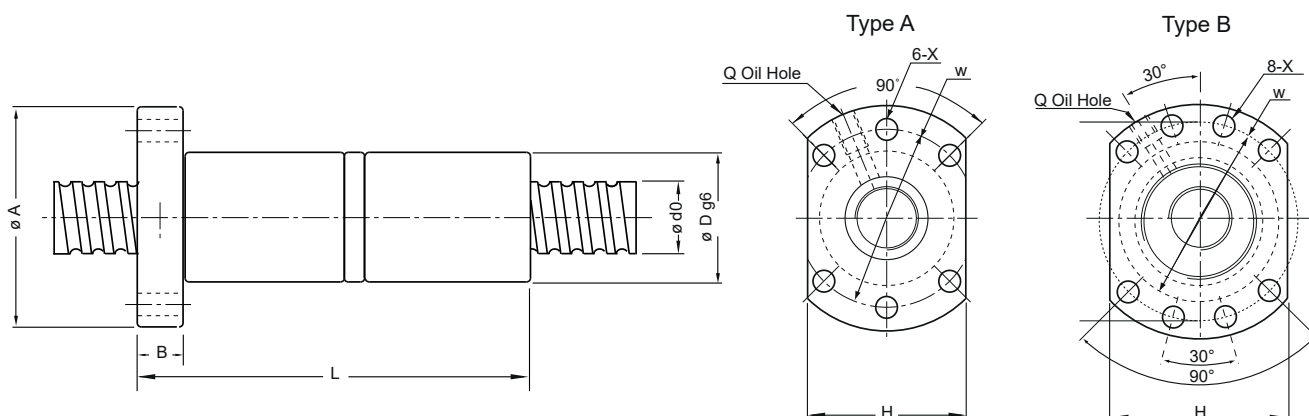
All other dimensions in mm.

Designation	Dimensions													Basic load ratings (N)	
	d0	l	Da	D	A	E	B	L	W	H	X	Q	n	C _a	C _{0a}
SFYR1632	16	32	2,778	32	53	10,1	10	42,5	42	34	4,5	M6	0,8 x 2	4 930	11 160
SFYR2040	20	40	3,175	39	62	13	10	48	50	41	5,5	M6	0,8 x 2	6 530	15 970
SFYR2550	25	50	3,969	47	74	15	12	58	60	49	6,6	M6	0,8 x 2	9 760	24 950

Standard nuts are without seals. Other types on request.

Type FDCR

Double Nut with Flange (DIN 69051)



l: Lead

Da: Ball diameter

n: Turns x circuits

All other dimensions in mm.

Designation	Dimensions													Basic load ratings (N)	
	d0	l	Da	D	A	B	L	W	X	Type	H	Q	n	Ca	Coa
FDCR1605	16	5	3,175	28	48	10	80	38	5,5	A	40	M6	1 x 3	10291	11223
FDCR2005	20	5	3,175	36	58	12	92	47	6,6	A	44	M6	1 x 4	14833	19571
FDCR2505	25	5	3,175	40	62	12	92	51	6,6	A	48	M6	1 x 4	16716	25320
FDCR2510	25	10	4,762	40	62	12	153	51	6,6	A	48	M6	1 x 4	28263	36248
FDCR3205	32	5	3,175	50	80	12	92	65	9,0	A	62	M6	1 x 4	18874	33383
FDCR3210	32	10	6,350	50	80	16	160	65	9,0	A	62	M6	1 x 4	47422	76861
FDCR4005	40	5	3,175	63	93	15	96	78	9,0	B	70	M8	1 x 4	47422	76861
FDCR4010	40	10	6,350	63	93	18	162	78	9,0	B	70	M8	1 x 4	52964	98826
FDCR5010	50	10	6,350	75	110	16	162	93	11,0	B	85	M8	1 x 4	58203	120791

Standard nuts are with oil-seals.

We strongly recommend to use the preloaded double nut on C5 ball screw material. The preload in a FDCR nut is according to the catalogue table light preload (P2). If you need a double nut with clearance or a different type of screw material please contact Rollco.

Order Code

RSK R 16 05 C5 - 1000 - P0 - L - D1B - E2F -N

Nut and screw type

SFY
SFK
RSC
RSK
FSC
FSE
FDC

Direction of helix

R = Right
L = Left

Shaft diameter (mm)

06-63

Lead (mm)

01-50

Lead accuracy

C5 (standard)
C7

Total length (mm)

Clearance nut

P0 = Standard clearance
P1 = Reduced clearance
P2 = Light preload

Nut orientation

Flange towards S = short end or L = long end

Machining code - first end

See codes below

Machining code - second end

See codes below

Option keyway

N = with keyway
Without, leave blank
Only for machining end D1 and E2

Machining codes:

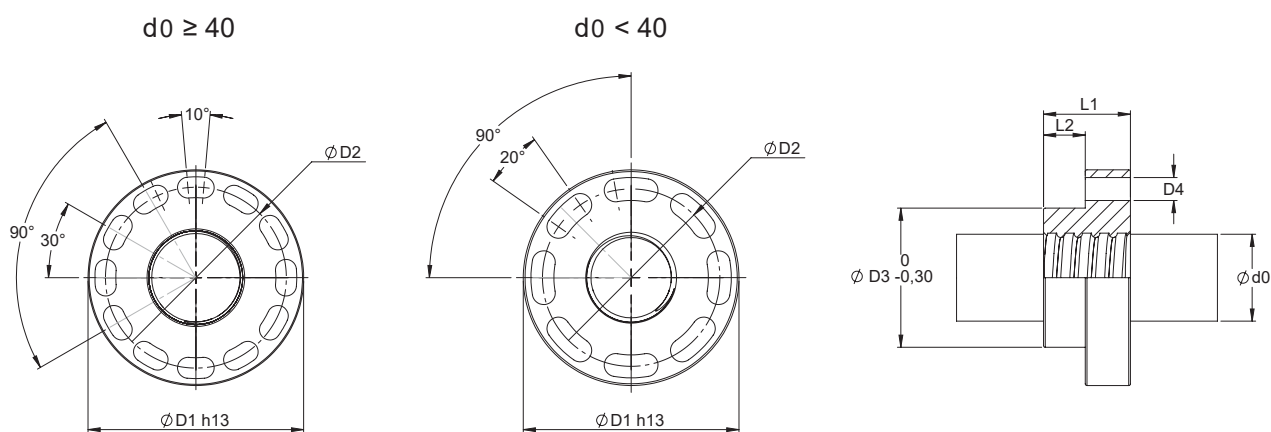
D0 = Cut/no machining
A = Annealing
Z = According to drawing
E1B
E2B

E1F
E2F
D1B
D2B
D1F

D2F
E1WF
E2WF
E1WFF
E2WFF

See further information under section **Standard End Journals.**

Safety Nut Type SNFSCR



All dimensions in mm.

Designation	Dimensions							
	d0	D1	D2	D3	D4	L1	L2	C _{a0} (N)
SNFSCR1605	16	48	38	28	8x5,5	25	12	50000
SNFSCR2005	20	58	47	36	8x6,6	25	12	61000
SNFSCR2505	25	62	51	40	8x6,6	25	12	75000
SNFSCR2510	25	62	51	40	8x6,6	30	15	56000
SNFSCR3205	32	80	65	50	8x9	30	15	112000
SNFSCR3210	32	80	65	50	8x9	30	15	113000
SNFSCR4005	40	93	78	63	12x9	35	15	163000
SNFSCR4010	40	93	78	63	12x9	40	15	190000
SNFSCR5010	50	110	93	75	12x11	40	15	226000

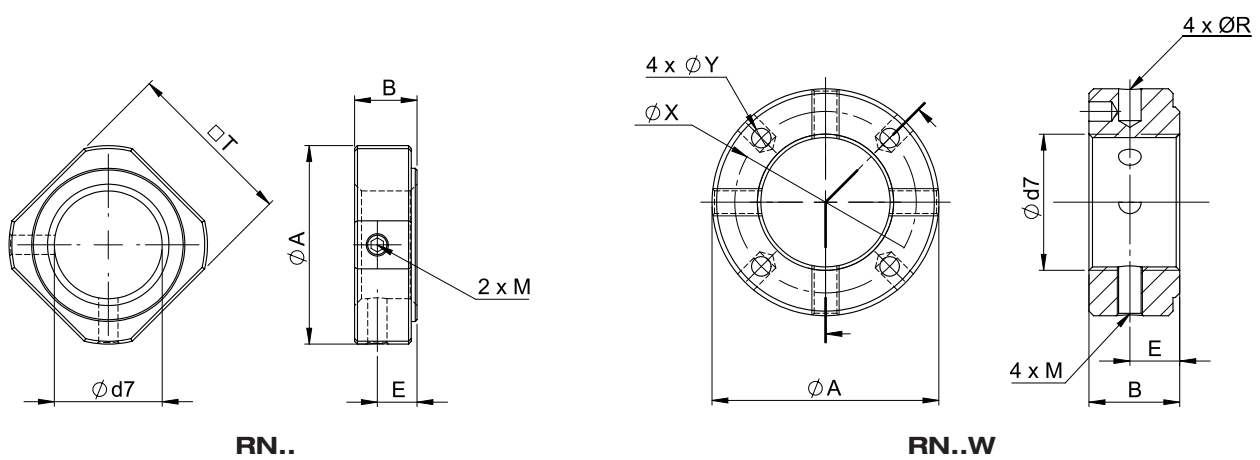
Lock Nuts RN/RN..W



RN..



RN..W



RN..

RN..W

All dimensions in mm.

Designation	Dimensions								
	d7	B	A	T	E	M	X	Y	R
RN06	M6x0.75	5	13.5	12	2.7	M3	-	-	-
RN08	M8x1	6.5	16.4	14	4	M3	-	-	-
RN10	M10x1	8	19	16	5.5	M3	-	-	-
RN12	M12x1	8	22.8	19	5.5	M4	-	-	-
RN15	M15x1	8	25.8	22	4.75	M4	-	-	-
RN17	M17x1	13	29	24	9	M4	-	-	-
RN20	M20x1	11	35	30	7	M4	-	-	-
RN25	M25x1.5	15	43	35	10	M6	-	-	-
RN30	M30x1.5	20	48	40	14	M6	-	-	-
RN40	M40x1.5	25	62	50	18	M6	-	-	-
RN25W	M25x1.5	20	45	-	11	M6	35	4.3	5
RN30W	M30x1.5	20	50	-	11	M6	40	4.3	5
RN40W	M40x1.5	22	60	-	12	M6	50	4.3	5

Spanner tools for radial holes "R" available from Rollco.

Housings for FSCR - Type RNB

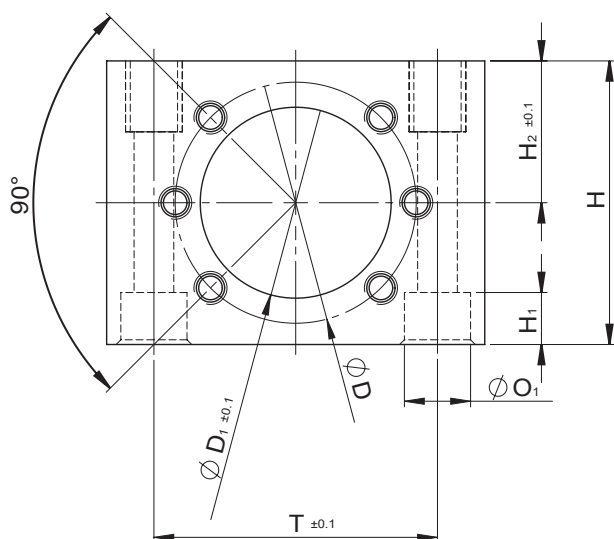
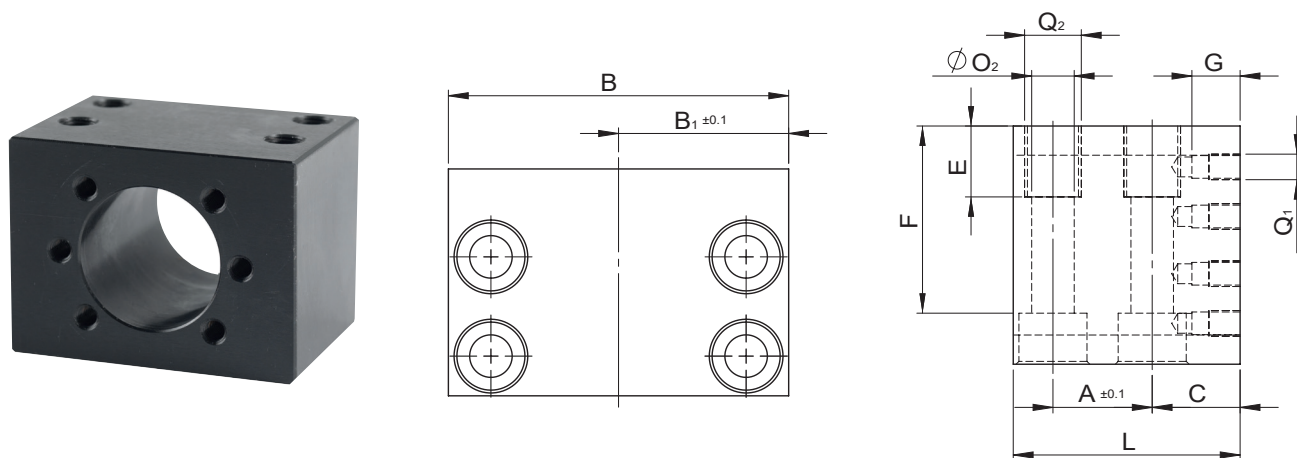


Fig. 1

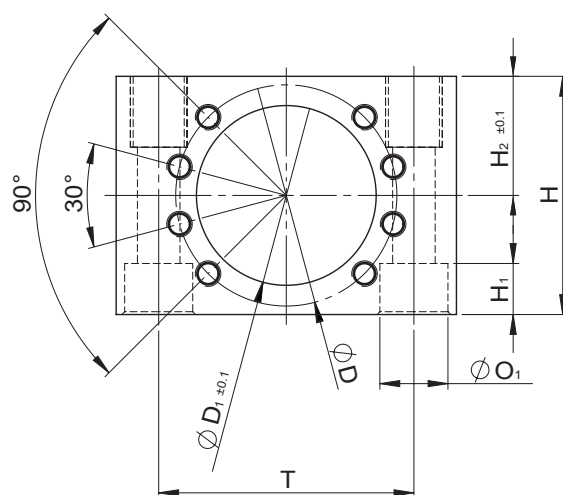
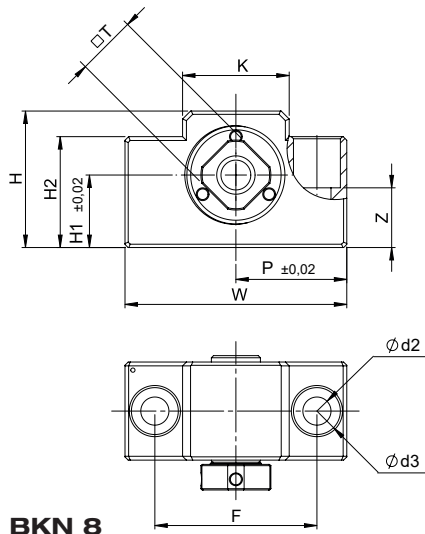


Fig. 2

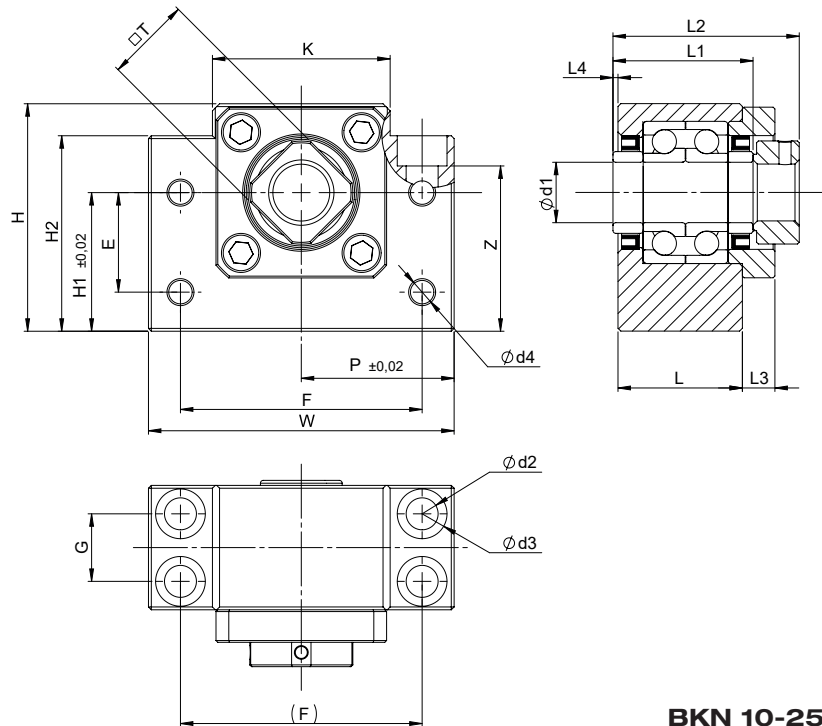
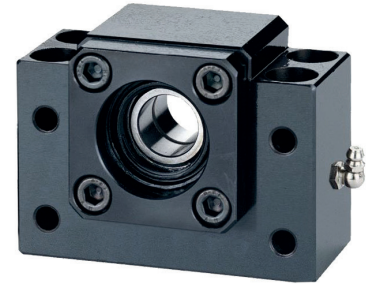
Designation	Dimensions (mm)																		Fig.
	T	D	D1	H	H1	H2	O1	O2	B	B1	F	E	A	C	L	G	Q1	Q2	
RNB16	50	38	28,4	48	11	24	14	8,4	70	35	37	15	20	20	50	10	M5	M10	1
RNB20	55	47	36,4	54	9	28	14	8,4	75	37,5	45	15	23	22	55	11	M6	M10	1
RNB25	60	51	40,4	58	9	30	14	8,4	80	40	49	15	23	22	55	11	M6	M10	1
RNB32	75	65	50,4	68	16	35	18	13	100	50	52	20	30	27	70	14	M8	M16	1
RNB40	90	78	63,4	84	18	42	24	15	120	60	66	25	35	31	80	17	M8	M18	2

Other types on request. Please contact Rollco for more information.

Support Unit Type BKN



BKN 8



BKN 10-25

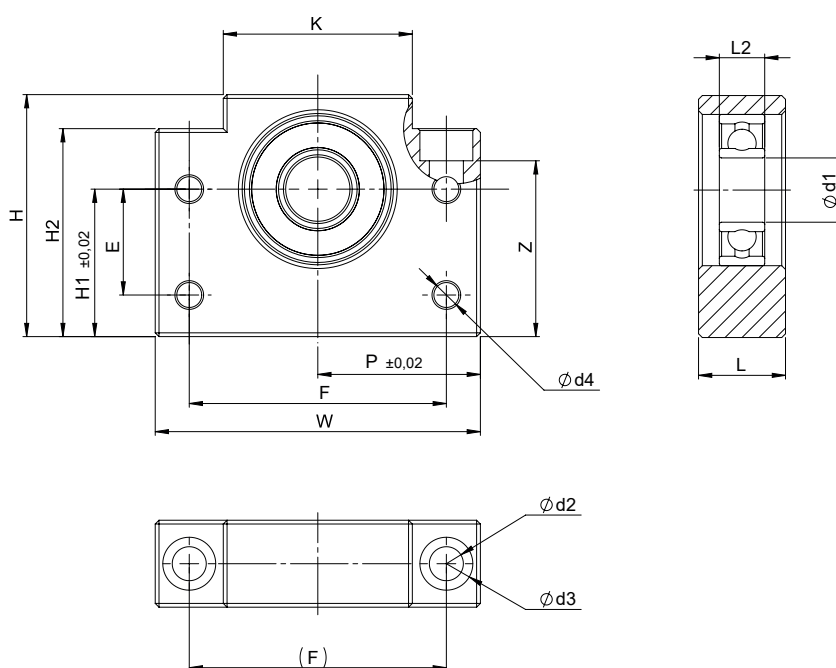
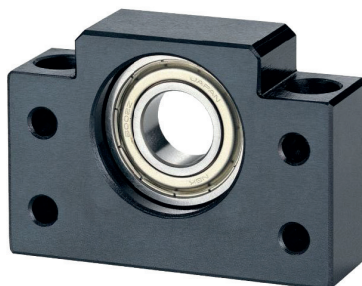
BRG: Bearing type

All dimensions in mm.

Desig.	Dimensions																			BRG	
	d1	H1	L	L1	L2*	L3	L4	d2	d3	d4	Z	W	P	K	H	H2	E	F	G		T
BKN 08	8	17	23	25	31,5	-	1,5	6,6	11	-	14	52	26	25	32	26	-	38	-	14	708 A
BKN 10	10	22	25	27	35	5	0,5	6,6	10,8	5,5	27,5	60	30	34	39	32,5	15	46	13	16	7000 A
BKN 12	12	25	25	27	35	5	0,5	6,6	10,8	5,5	31	60	30	34	43	32,5	18	46	13	19	7001 A
BKN 15	15	28	27	30	38	6	0	6,6	11	5,5	31,5	70	35	40	48	38	18	54	15	22	7002 A
BKN 17	17	39	35	38	51	9	0	9	14	6,6	46,5	86	43	50	64	55	28	68	19	24	7203 A
BKN 20	20	34	35	40	51	8	0	9	14	6,6	41,5	88	44	52	60	50	22	70	19	30	7004 A
BKN 25	25	48	42	48	63	12	0	11	17	9	59	106	53	64	80	70	33	85	22	35	7205 B
BKN 30	30	51	45	50	70	14	0	14	20	11	65	128	64	76	89	78	33	102	23	40	7206 B
BKN 40	40	60	61	66	91	18	0	18	26	14	72,5	160	80	100	110	90	37	130	33	50	7208 B

*Using standard shaft nut type RN.

Support Unit Type BFN

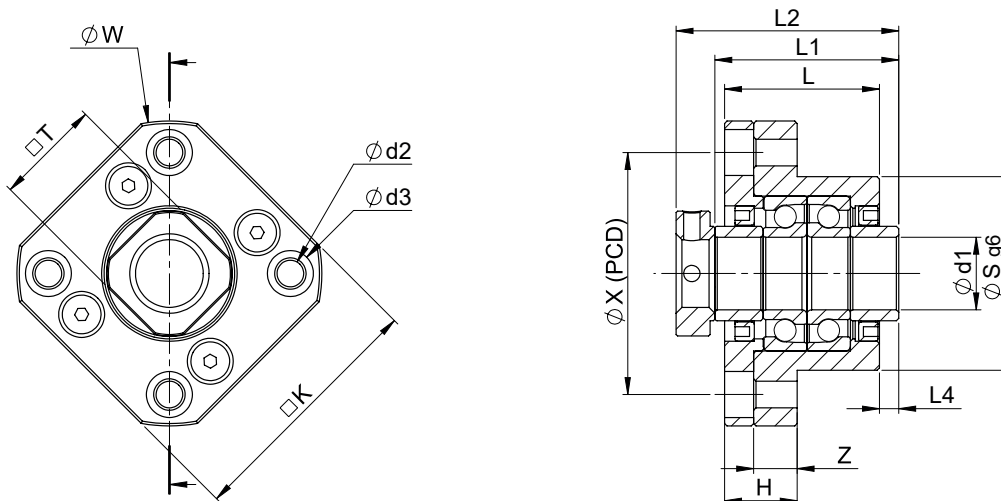


BRG: Bearing type

All dimensions in mm.

Designation	Dimensions															BRG
	d1	H1	L	L2	d2	d3	d4	Z	W	P	K	H	H2	E	F	
BFN 08	6	17	14	6	6,6	11	-	14	52	26	25	32	26	-	38	606-2Z
BFN 10	8	22	20	7	6,6	10,8	5,5	27,5	60	30	34	39	32,5	15	46	608-2Z
BFN 12	10	25	20	8	6,6	10,8	5,5	31	60	30	34	43	32,5	18	46	6000-2Z
BFN 15	15	28	20	9	6,6	11	5,5	31,5	70	35	40	48	38	18	54	6002-2Z
BFN 17	17	39	23	12	9	14	6,6	46,5	86	43	50	64	55	28	68	6203-2Z
BFN 20	20	34	26	12	9	14	6,6	41,5	88	44	52	60	50	22	70	6004-2Z
BFN 25	25	48	30	15	11	17	9	59	106	53	64	80	70	33	85	6205-2Z
BFN 30	30	51	32	16	14	20	11	65	128	64	76	89	78	33	102	6206-2Z
BFN 40	40	60	37	18	18	26	14	72,5	160	80	100	110	90	37	130	6208-2Z

Support Unit Type FKN

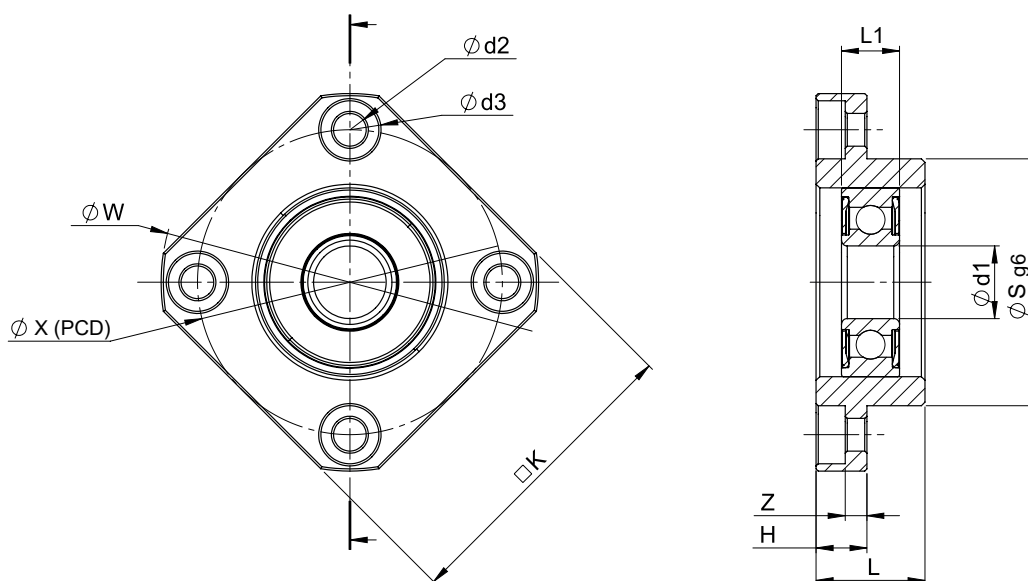
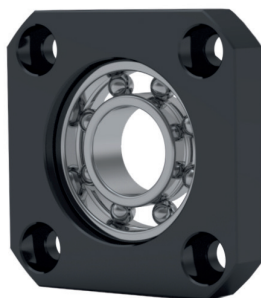


BRG: Bearing type

All dimensions in mm.

Designation	Dimensions														BRG
	d1	X	S	L	L1	L2	L4	d2	d3	Z	W	K	H	T	
FKN06	6	28	22	20	22	27	1,5	3,4	6,5	3	36	34	7	12	706 A
FKN08	8	35	28	23	25	31,5	1,5	3,4	6,5	5	43	35	9	14	708 A
FKN10	10	42	34	27	27	35	0,5	4,5	8	6	52	42	10	16	7000 A
FKN12	12	44	36	27	27	35	0,5	4,5	8	6	54	44	10	19	7001 A
FKN15	15	50	40	32	38	46	4	5,5	9,5	9	63	52	15	22	7002 A
FKN17	17	62	50	45	44	56	1	6,6	11	12	77	61	22	24	7203 A
FKN20	20	70	57	52	50	61	1	6,6	11	12	85	68	22	30	7204 B
FKN25	25	80	63	57	58	73	4	9	14	14	98	79	27	35	7205 B
FKN30	30	95	75	62	50	70	-3	11	17,5	15	117	93	30	40	7208 B

Support Unit Type FFN



BRG: Bearing type

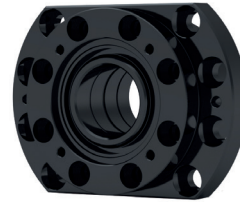
All dimensions in mm.

Designation	Dimensions											BRG
	d1	S	X	d2	d3	L1	Z	W	L	K	H	
FFN 10	8	28	35	3,4	6,5	7	3	43	12	35	7	608-2Z
FFN 12	10	34	42	4,5	8	8	3	52	15	42	7	6000-2Z
FFN 15	15	40	50	5,5	9,5	9	3,5	63	17	52	9	6002-2Z
FFN 17	17	50	62	6,6	11	12	4,5	77	20	61	11	6203-2Z
FFN 20	20	57	70	6,6	11	14	4,5	85	20	68	11	6204-2Z
FFN 25	25	63	80	9	14	15	5,5	98	24	79	14	6205-2Z
FFN 30	30	75	95	11	17	16	7	117	27	93	18	6206-2Z

Support Unit Heavy Load Type WBK..DF/WBK..DFF



WBK..DFF



WBK..DF

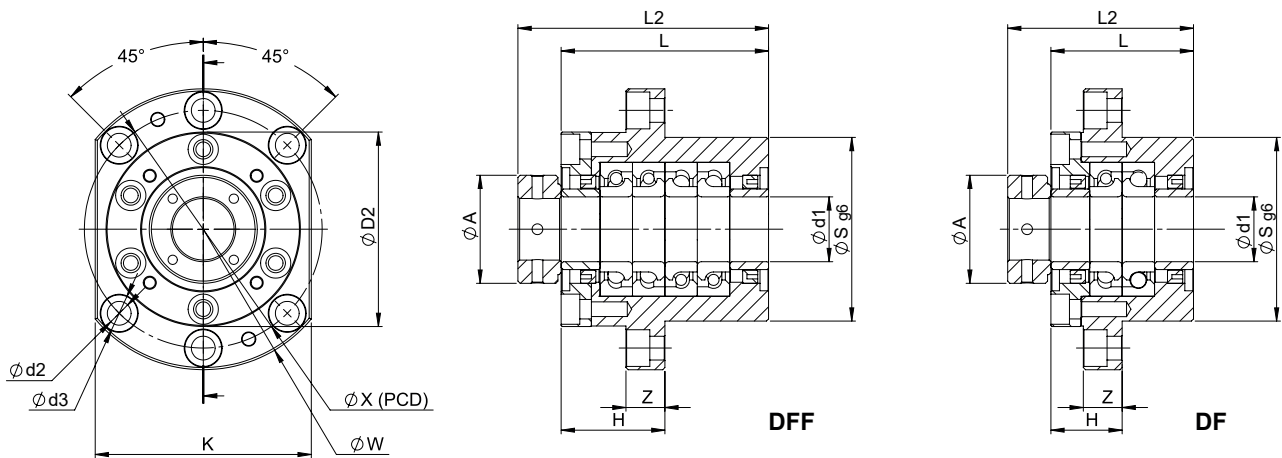


Fig. 1

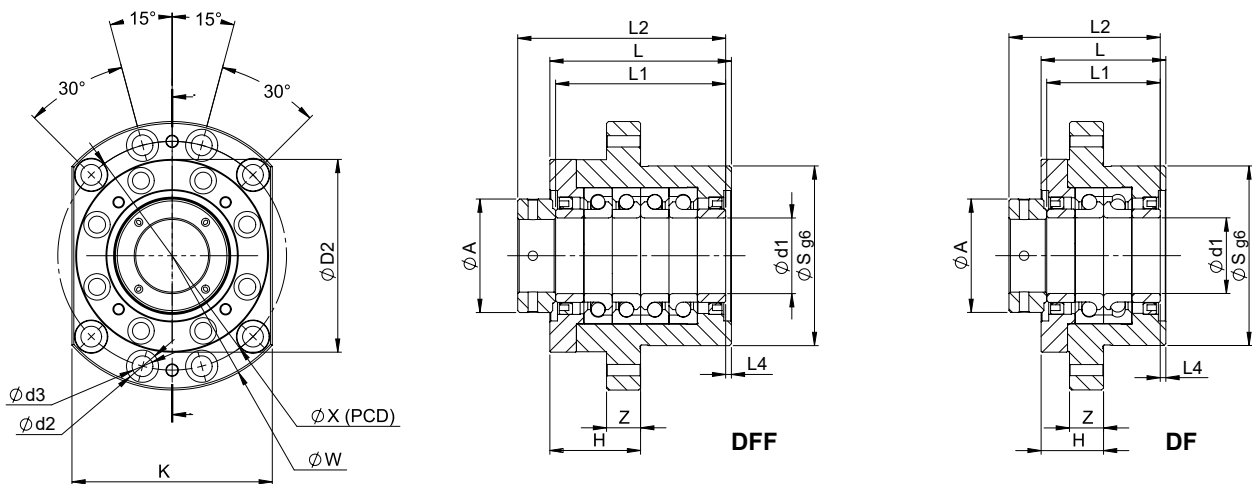


Fig. 2

BRG: Bearing type

All dimensions in mm.

Designation	Dimensions															BRG	Fig.
	d1	X	S	L	L1	L2	L4	d2	d3	Z	W	K	H	A	D2		
WBK25DF	25	110	85	66	66	86	-	11	17	18	130	100	33	45	90	25TAC 62B	1
WBK30DF	30	110	85	66	66	86	-	11	17	18	130	100	33	50	90	30TAC 62B	1
WBK30DFF	30	110	85	96	96	116	-	11	17	18	130	100	48	50	90	30TAC 62B	1
WBK40DF	40	121	95	66	60	83	3	11	17	18	142	106	33	60	102	40TAC 72B	2
WBK40DFF	40	121	95	96	90	113	3	11	17	18	142	106	48	60	102	40TAC 72B	2

Load Capacity of Support Units

Light to normal load

Designation	Bearing type	Load limits*		Bearing axial rating**	
		Dynamic Permissible axial load (kN)	Static Permissible axial load (kN)	Axial dynamic load capacity Ca (kN)	Axial static load capacity C0a (kN)
FKN 06	706 A	0,72	0,96	2,67	2,41
FKN 08	708A	1,02	1,76	4,41	4,39
FKN 10	7000A	2,00	3,15	7,04	7,88
FKN 12	7001A	2,4	3,6	7,6	9,0
FKN 15	7002A	2,9	4,2	8,0	10,5
FKN 17	7203A	4,1	7,3	14,2	18,2
FKN 20	7204B	8,3	11,8	23,3	29,4
FKN 25	7205B	9,7	14,5	26,0	36,2
FKN 30	7206B	14,2	20,8	36,0	51,9
BKN 08	708A	1,02	1,76	4,41	4,39
BKN 10	7000A	2,00	3,15	7,04	7,88
BKN 12	7001A	2,4	3,6	7,6	9,0
BKN 15	7002A	2,9	4,2	8,0	10,5
BKN 17	7203A	4,1	7,3	14,2	18,2
BKN 20	7004A	5,8	8,0	14,2	20,0
BKN 25	7205B	9,7	14,5	26,0	36,2
BKN 30	7206B	14,2	20,8	36,0	51,9
BKN 40	7208B	18,0	35,4	56,1	88,5

* Dynamic limits are the loads where a reliable life time calculation isn't possible to do. Noise level and heat generation will also increase rapidly above this limit. Static limit is calculated with a static safety factor $s_0 = 2,5$ to C0a. See more in section "Life Calculation" or contact Rollco for advise.

** Axial dynamic rating Ca is used to calculate the nominal life of the bearings. Axial static rating C0a is a theoretical value where the bearings get permanent damaged. See more in section "Life Calculation" or contact Rollco for advise.

Heavy load

Heavy load units can operate at very high loads compared to its size. Dynamic loads up to 100% of Ca is feasible but at the expense of the life.

Designation	Bearing type	Load limits*		Bearing axial rating**	
		Dynamic Permissible axial load (kN)	Static Permissible axial load (kN)	Axial dynamic load capacity Ca (kN)	Axial static load capacity C0a (kN)
WBK25DF	25TAC 62B	20,0	28,5	28,5	40,7
WBK30DF	30TAC 62B	20,5	30,2	29,2	43,2
WBK30DFF	30TAC 62B	33,3	60,4	47,6	86,3
WBK40DF	40TAC 72B	22,3	36,4	31,9	52,0
WBK40DFF	40TAC 72B	36,1	72,8	51,5	104,0

Screw Dimension (d0 x Lead)

6 x 1	[Orange grid]																
8 x 1	[Green]	[Orange grid]															
8 x 2.5	[Green]	[Orange grid]															
10 x 2	[Green]	[Yellow]	[Yellow]	[Orange grid]													
12 x 2	[Dark Green]	[Yellow]	[Light Green]	[Orange grid]													
12 x 4	[Dark Green]	[Yellow]	[Light Green]	[Orange grid]													
14 x 2	[Yellow]	[Dark Green]	[Dark Green]	[Light Green]	[Light Green]	[Orange grid]											
16 x 5	[Yellow]	[Yellow]	[Yellow]	[Dark Green]	[Dark Green]	[Orange grid]											
16 x 10	[Yellow]	[Yellow]	[Yellow]	[Dark Green]	[Dark Green]	[Orange grid]											
16 x 16	[Yellow]	[Yellow]	[Yellow]	[Dark Green]	[Dark Green]	[Orange grid]											
16 x 32	[Yellow]	[Yellow]	[Yellow]	[Dark Green]	[Dark Green]	[Orange grid]											
20 x 5	[Yellow]	[Yellow]	[Yellow]	[Yellow]	[Dark Green]	[Dark Green]	[Light Green]	[Light Green]	[Orange grid]								
20 x 20	[Yellow]	[Yellow]	[Yellow]	[Yellow]	[Dark Green]	[Dark Green]	[Light Green]	[Light Green]	[Orange grid]								
20 x 40	[Yellow]	[Yellow]	[Yellow]	[Yellow]	[Dark Green]	[Dark Green]	[Light Green]	[Light Green]	[Orange grid]								
25 x 5	[Yellow]	[Yellow]	[Yellow]	[Yellow]	[Yellow]	[Yellow]	[Light Green]	[Light Green]	[Dark Green]	[Dark Green]	[Orange grid]						
25 x 10	[Yellow]	[Yellow]	[Yellow]	[Yellow]	[Yellow]	[Yellow]	[Dark Green]	[Dark Green]	[Light Green]	[Light Green]	[Orange grid]						
25 x 25	[Yellow]	[Yellow]	[Yellow]	[Yellow]	[Yellow]	[Yellow]	[Light Green]	[Light Green]	[Dark Green]	[Dark Green]	[Orange grid]						
25 x 50	[Yellow]	[Yellow]	[Yellow]	[Yellow]	[Yellow]	[Yellow]	[Light Green]	[Light Green]	[Dark Green]	[Dark Green]	[Orange grid]						
32 x 5	[Yellow]	[Yellow]	[Yellow]	[Yellow]	[Yellow]	[Yellow]	[Yellow]	[Yellow]	[Yellow]	[Yellow]	[Dark Green]	[Dark Green]	[Orange grid]				
32 x 10	[Yellow]	[Yellow]	[Yellow]	[Yellow]	[Yellow]	[Yellow]	[Yellow]	[Yellow]	[Yellow]	[Yellow]	[Dark Green]	[Dark Green]	[Orange grid]				
32 x 20	[Yellow]	[Yellow]	[Yellow]	[Yellow]	[Yellow]	[Yellow]	[Yellow]	[Yellow]	[Yellow]	[Yellow]	[Dark Green]	[Dark Green]	[Orange grid]				
32 x 32	[Yellow]	[Yellow]	[Yellow]	[Yellow]	[Yellow]	[Yellow]	[Yellow]	[Yellow]	[Yellow]	[Yellow]	[Dark Green]	[Dark Green]	[Orange grid]				
40 x 5	[Yellow]	[Yellow]	[Yellow]	[Yellow]	[Yellow]	[Yellow]	[Yellow]	[Yellow]	[Yellow]	[Yellow]	[Yellow]	[Yellow]	[Dark Green]	[Dark Green]	[Orange grid]		
40 x 10	[Yellow]	[Yellow]	[Yellow]	[Yellow]	[Yellow]	[Yellow]	[Yellow]	[Yellow]	[Yellow]	[Yellow]	[Yellow]	[Yellow]	[Dark Green]	[Dark Green]	[Orange grid]		
40 x 20	[Yellow]	[Yellow]	[Yellow]	[Yellow]	[Yellow]	[Yellow]	[Yellow]	[Yellow]	[Yellow]	[Yellow]	[Yellow]	[Yellow]	[Dark Green]	[Dark Green]	[Orange grid]		
40 x 40	[Yellow]	[Yellow]	[Yellow]	[Yellow]	[Yellow]	[Yellow]	[Yellow]	[Yellow]	[Yellow]	[Yellow]	[Yellow]	[Yellow]	[Dark Green]	[Dark Green]	[Orange grid]		
50 x 10	[Yellow]	[Yellow]	[Yellow]	[Yellow]	[Yellow]	[Yellow]	[Yellow]	[Yellow]	[Yellow]	[Yellow]	[Yellow]	[Yellow]	[Yellow]	[Yellow]	[Dark Green]	[Orange grid]	
50 x 50	[Yellow]	[Yellow]	[Yellow]	[Yellow]	[Yellow]	[Yellow]	[Yellow]	[Yellow]	[Yellow]	[Yellow]	[Yellow]	[Yellow]	[Yellow]	[Yellow]	[Dark Green]	[Orange grid]	
63 x 10	[Yellow]	[Yellow]	[Yellow]	[Yellow]	[Yellow]	[Yellow]	[Yellow]	[Yellow]	[Yellow]	[Yellow]	[Yellow]	[Yellow]	[Yellow]	[Yellow]	[Light Green]	[Orange grid]	
63 x 20	[Yellow]	[Yellow]	[Yellow]	[Yellow]	[Yellow]	[Yellow]	[Yellow]	[Yellow]	[Yellow]	[Yellow]	[Yellow]	[Yellow]	[Yellow]	[Yellow]	[Light Green]	[Orange grid]	
		BFN08	BFN10	FFN10	BFN12	FFN12	BFN15	FFN15	BFN17	FFN17	BFN20	FFN20	BFN25	FFN25	BFN30	FFN30	BFN40
d4=	6	8	8	10	10												

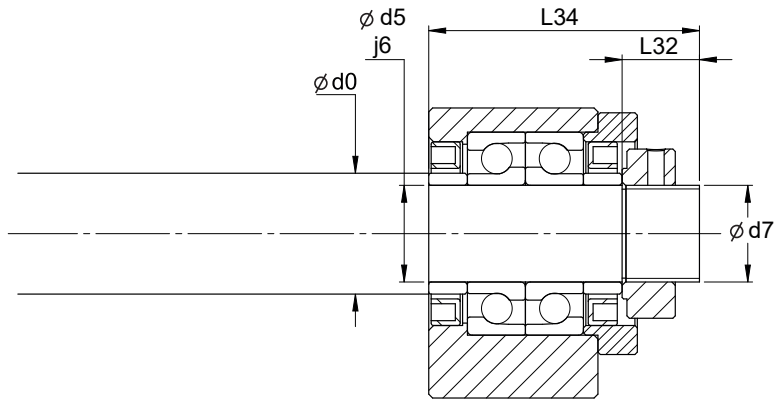
The not recommended combinations are based on one or more arguments:

- a. The root diameter is too small to guarantee full axial load support
- b. The load capacity of the fixed end unit is much lower than for the ball screw
- c. For support end units, the shaft height is not matching the recommended fixed end unit.

Please contact Rollco for advise if you need an non-standard combination.

Standard End Journals

E1



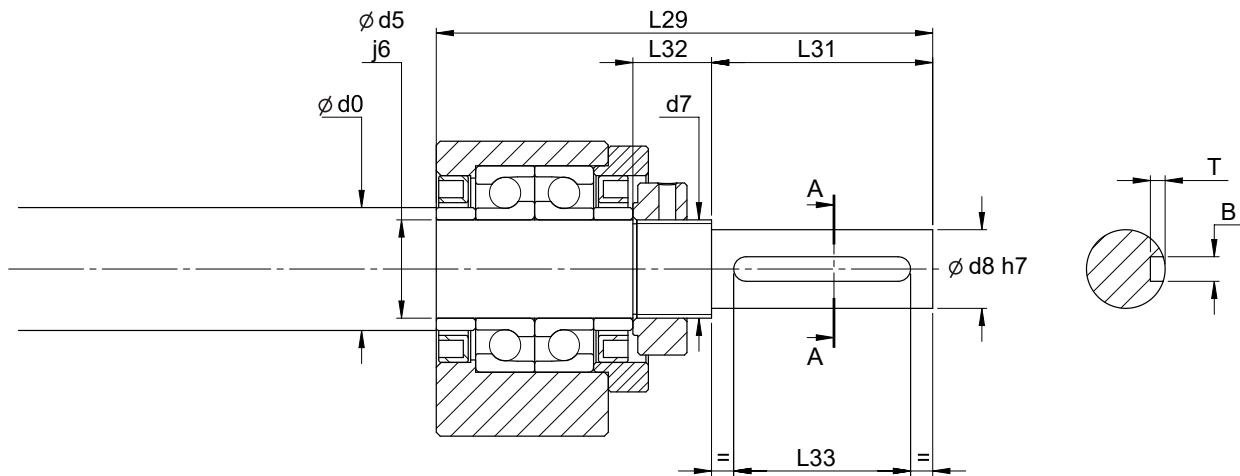
Code	Unit	d0*	d5	d7	L32	L34
E1B	BKN08	12	8	M8x1	12	36
E1B	BKN10	14	10	M10x1	10	36
E1B	BKN12	16	12	M12x1	13	40
E1B	BKN 15	20	15	M15x1	13	43
E1B	BKN17**	25	17	M17x1	17	55
E1B	BKN20	25	20	M20x1	16	56
E1B	BKN25	32	25	M25x1.5	17	65
E1B	BKN30	40	30	M30x1.5	21	71
E1B	BKN 40	50	40	M40x1.5	26	92
E1F	FKN06	8	6	M6x0.75	8	28
E1F	FKN06	10	6	M6x0.75	8	28
E1F	FKN08	12	8	M8x1	12	36
E1F	FKN10	14	10	M10x1	10	36
E1F	FKN12	16	12	M12x1	13	40
E1F	FKN 15	20	15	M15x1	13	47
E1F	FKN17**	25	17	M17x1	17	59
E1F	FKN20	25	20	M20x1	16	64
E1F	FKN25	32	25	M25x1.5	20	73
E1F	FKN30	40	30	M30x1.5	21	71
E1WF	WBK25DF	32	25	M25x1.5	26	89
E1WF	WBK30DF	40	30	M30x1.5	26	89
E1WF	WBK40DF	50	40	M40x1.5	30	92
E1WFF	WBK30DFF	40	30	M30x1.5	26	119
E1WFF	WBK40DFF	50	40	M40x1.5	30	122

* Nominal ball screw diameter.

** Support units size 17 is recommended standard for ball screw size 2510 (lead 10). See also tables on page 22-23.

E2 and E2 -N

(-N = with keyway)



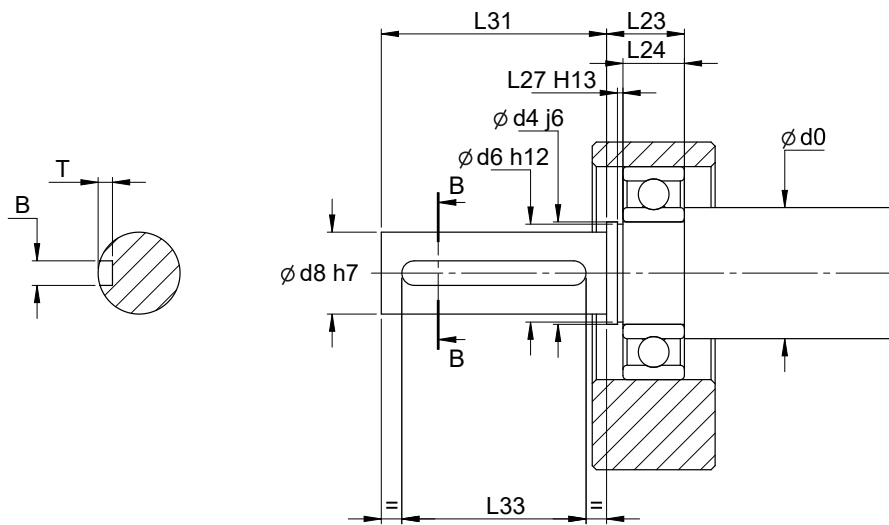
Code	Unit	d0*	d5	d7	d8	L29	L31	L32	- N B _{P9} x L ₃₃ x T
E2B	BKN08	12	8	M8x1	6	51	15	12	2x10x1,2
E2B	BKN10	14	10	M10x1	8	51	15	10	2x10x1,2
E2B	BKN12	16	12	M12x1	10	65	25	13	3x18x1,8
E2B	BKN 15	20	15	M15x1	12	78	35	13	4x27x2,5
E2B	BKN17**	25	17	M17x1	15	78	23	17	5x18x3
E2B	BKN20	25	20	M20x1	16	101	45	16	5x36x3
E2B	BKN25	32	25	M25x1.5	20	120	55	17	6x45x3,5
E2B	BKN30	40	30	M30x1.5	25	133	62	21	8x50x4
E2B	BKN40	50	40	M40x1.5	36	168	76	26	10x63x5
E2F	FKN06	8	6	M6x0.75	4	36	8	8	-
E2F	FKN06	10	6	M6x0.75	4	36	8	8	-
E2F	FKN08	12	8	M8x1	6	51	15	12	2x10x1,2
E2F	FKN10	14	10	M10x1	8	51	15	10	2x10x1,2
E2F	FKN12	16	12	M12x1	10	65	25	13	3x18x1,8
E2F	FKN 15	20	15	M15x1	12	82	35	13	4x27x2,5
E2F	FKN17**	25	17	M17x1	15	82	23	17	5x18x3
E2F	FKN20	25	20	M20x1	16	109	45	16	5x36x3
E2F	FKN25	32	25	M25x1.5	20	128	55	20	6x45x3,5
E2F	FKN30	40	30	M30x1.5	25	133	62	21	8x50x4
E2WF	WBK25DF	32	25	M25x1.5	20	144	55	26	6x45x3,5
E2WF	WBK30DF	40	30	M30x1.5	25	153	64	26	8x50x4
E2WF	WBK40DF	50	40	M40x1.5	36	170	78	30	10x63x5
E2WFF	WBK30DFF	40	30	M30x1.5	25	183	64	26	8x50x4
E2WFF	WBK40DFF	50	40	M40x1.5	36	200	78	30	10x63x5

* Nominal ball screw diameter.

** Support units size 17 is recommended standard for ball screw size 2510 (lead 10). See also tables on page 22-23.

D1 and D1 -N

(-N = with keyway)

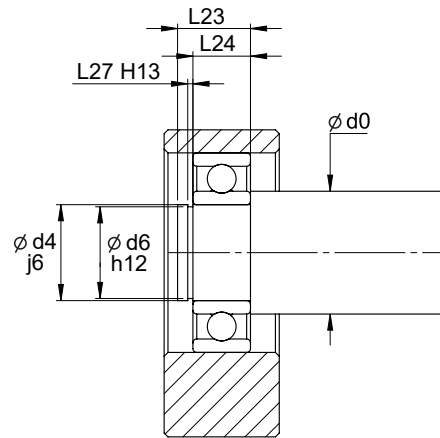


Code	Unit	d0*	d4	d6	d8	L23	L24	L27	L31	- N B _{P9} x L ₃₃ x T
D1B	BFN 08	12	6	5,7	6	8	6	0,9	15	2x10x1,2
D1B	BFN10	14	8	7,6	8	10	7	0,9	15	2x10x1,2
D1B	BFN12	16	10	9,6	10	10,5	8	1,15	25	3x18x1,8
D1B	BFN15	20	15	14,3	12	13	9	1,15	35	4x27x2,5
D1B	BFN 17**	25	17	16,2	15	16	12	1,15	23	5x18x3
D1B	BFN 20	25	20	19	16	16	12	1,35	45	5x36x3
D1B	BFN25	32	25	23,9	20	19	15	1,35	55	6x45x3,5
D1B	BFN30	40	30	28,6	25	21	16	1,65	62	8x50x4
D1B	BFN 40	50	40	37,5	36	25	18	1,85	76	10x63x5
D1F	FFN10	14	8	7,6	8	10	7	0,9	15	2x10x1,2
D1F	FFN12	16	10	9,6	10	10,5	8	1,15	25	3x18x1,8
D1F	FFN15	20	15	14,3	12	13	9	1,15	35	4x27x2,5
D1F	FFN 20	25	20	19	16	18	14	1,35	45	5x36x3
D1F	FFN25	32	25	23,9	20	19	15	1,35	55	6x45x3,5
D1F	FFN30	40	30	28,6	25	21	16	1,65	62	8x50x4

* Nominal ball screw diameter.

** Support units size 17 is recommended standard for ball screw size 2510 (lead 10). See also tables on page 22-23.

D2



Code	Unit	d0*	d4	d6	L23	L24	L27
D2B	BFN 08	12	6	5,7	8	6	0,9
D2B	BFN10	14	8	7,6	10	7	0,9
D2B	BFN12	16	10	9,6	10,5	8	1,15
D2B	BFN15	20	15	14,3	13	9	1,15
D2B	BFN 17**	25	17	16,2	16	12	1,15
D2B	BFN 20	25	20	19	16	12	1,35
D2B	BFN25	32	25	23,9	19	15	1,35
D2B	BFN30	40	30	28,6	21	16	1,65
D2B	BFN 40	50	40	37,5	25	18	1,85
D2F	FFN10	14	8	7,6	10	7	0,9
D2F	FFN12	16	10	9,6	10,5	8	1,15
D2F	FFN15	20	15	14,3	13	9	1,15
D2F	FFN 20	25	20	19	18	14	1,35
D2F	FFN25	32	25	23,9	19	15	1,35
D2F	FFN30	40	30	28,6	21	16	1,65

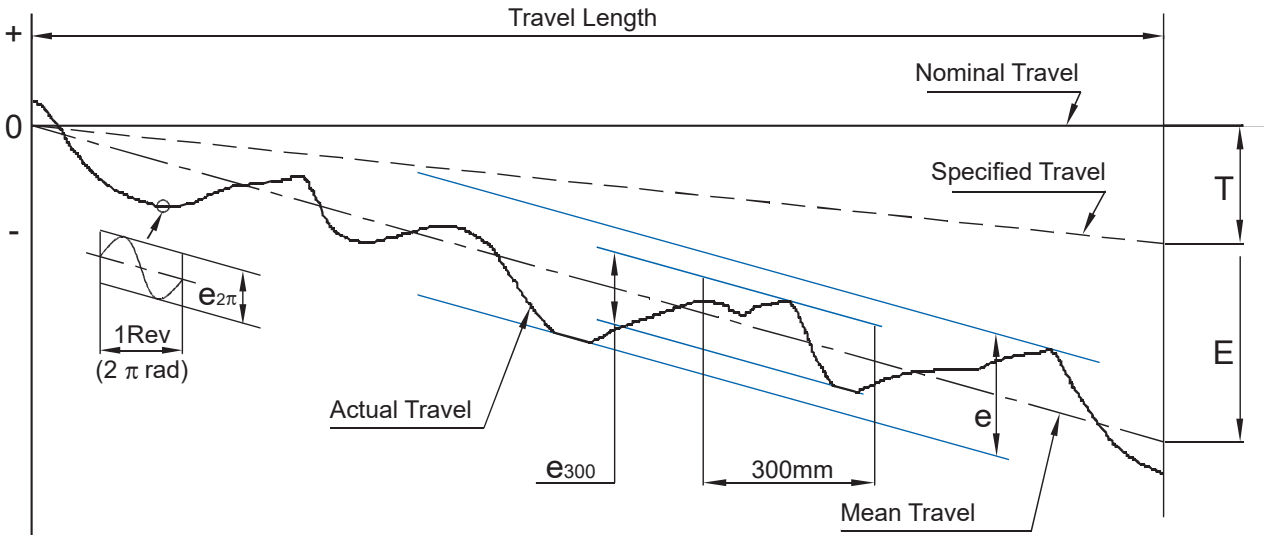
* Nominal ball screw diameter.

** Support units size 17 is recommended standard for ball screw size 2510 (lead 10). See also tables on page 22-23.

Lead and Travel Accuracy

Lead accuracy of ball screws are graded C0 to C10, lower figure means less lead error. Grade C0 to C5 are specified by 4 basic terms: E, e, e_{300} and $e_{2\pi}$. For grade C7 and C10, only the maximal travel variation for any 300 mm is specified (e_{300}).

Diagram of Lead Accuracy



Definition of Terms for Lead Accuracy

Terms	Reference	Definition
Travel compensation	T	Travel compensation is an intentional added or subtracted mean travel deviation. Used to compensate for the accuracy loss caused by operating the ball screw at lower or higher temperature than the reference temperature 20°C. Practically, travel compensation can only be specified and delivered for ground ball screws.
Actual travel		Position achieved in reality, sum of all deviations.
Mean travel deviation	E	The linearized average travel deviation over a specified travel length. This value (if known) could be used to make a simple accuracy improvement by using a one-term scale factor in the control system.
Travel variations	e	The maximal travel variation over specified travel length.
	e_{300}	The maximal travel variation over any measured 300 mm travel length. For C7 and C10, this value accumulates with longer travel.
	$e_{2\pi}$	Travel deviation measure over one revolution (travel length = lead of ball screw).

Mean Travel Deviation ($\pm E$) and Travel Variation (e) (JIS B 1192)

	Grade		C0		C1		C2		C3		C5		C7	C10
	Over	Incl.	$\pm E$	e	$\pm E$	e	$\pm E$	e	$\pm E$	e	$\pm E$	e		
Travel Length (mm)		100	3	3	3.5	5	5	7	8	8	18	18		
	100	200	3.5	3	4.5	5	7	7	10	8	20	18		
	200	315	4	3.5	6	5	8	7	12	8	23	18		
	315	400	5	3.5	7	5	9	7	13	10	25	20		
	400	500	6	4	8	5	10	7	15	10	27	20		
	500	630	6	4	9	6	11	8	16	12	30	23		
	630	800	7	5	10	7	13	9	18	13	35	25		
	800	1000	8	6	11	8	15	10	21	15	40	27		
	1000	1250	9	6	13	9	18	11	24	16	46	30	$\pm 50/$	$\pm 210/$
	1250	1600	11	7	15	10	21	13	29	18	54	35	300mm	300mm
	1600	2000			18	11	25	15	35	21	65	40		
	2000	2500			22	13	30	18	41	24	77	46		
	2500	3150			26	15	36	21	50	29	93	54		
	3150	4000			30	18	44	25	60	35	115	65		
	4000	5000					52	30	72	41	140	77		
	5000	6300					65	36	90	50	170	93		
	6300	8000							110	60	210	115		
8000	10000									260	140			
10000	12500									320	170			

Unit: μm

Pre-load and Clearance

Single nuts always perform best and produce the smoothest running having some axial clearance. Rollco offers reduced clearance (P1) as an option for all sizes. Light preload (P2) is possible for most sizes of single nuts but will always introduce some roughness of running under no-load conditions. If requirements on both pre-load and smoothness at zero load are high, a double nut FDCR is the solution. Pre-loaded nuts require at least C5 rolled ball screw to work well. On request, Rollco can offer ground ball screw in C5 and C3 quality. This improve the running behavior and decrease the noise level substantially.

Standard clearance (P0)

Screw shaft \varnothing	Rolled ball screw clearance in the axial direction (max)	
4 ~ 14	0,05	small size of ball screw
15 ~ 49	0,08	middle size of ball screw
50 ~ 80	0,12	big size of ball screw

Unit: mm

Reduced clearance (P1)

Max 0,02 mm clearance for all sizes

Light preload (P2)

Light preload P2 means that there is an internal load on the balls because of oversized balls. In applications with very high life-time requirements, this internal load will affect the life time.

Recirculation type:

I: internal by radial inserts

E: internal by end inserts

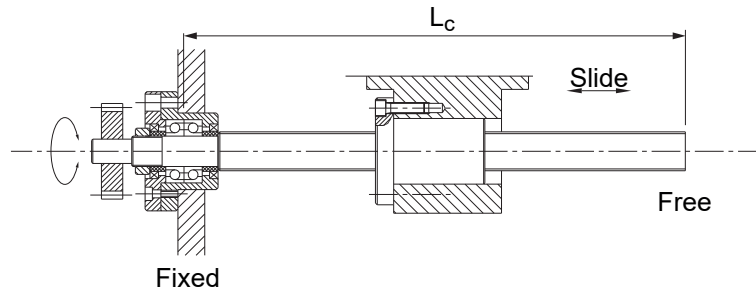
Type	Recirculation type	Preload (% of Ca)	Reference torque T_p (Nm)
FSCR1605	I	3%	0,029
FSCRN1610	E	2%	0,026
FSCR2005	I	3%	0,046
FSCR2505	I	3%	0,059
FSCR2510	I	3%	0,109
FSCR3205	I	3%	0,074
FSCR3210	I	3%	0,257
FSCR3220	E	2%	0,142
FSCR4005	I	3%	0,093
FSCR4010	I	3%	0,325
FSCR4020	E	2%	0,308
FSCR5010	I	3%	0,413
FSCR6310	I	3%	0,532
FSCR6320	I	3%	1,283
RSKR1204	I	3%	0,022
RSKR1605	I	3%	0,027
FSER1616	E	2%	0,043
FSER2020	E	2%	0,044
FSER2525	E	2%	0,086
FSER3232	E	2%	0,158
FSER4040	E	2%	0,324
FSER5050	E	2%	0,721

Reference torque T_p is defined for an oil lubricated nut without wipers, measured at 100 rpm. Allowed fluctuation is typical +/- 30% but may be more on long screw shafts. (Length/diameter > 40.)

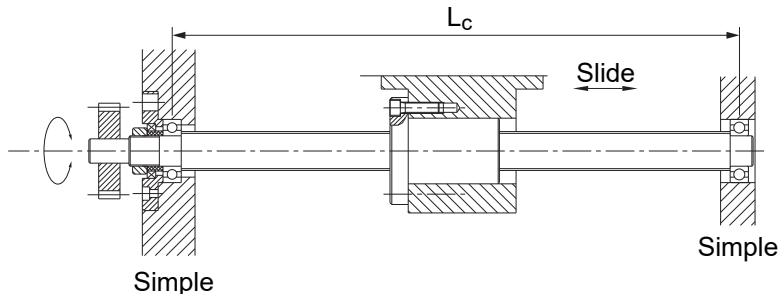
It is normal that the starting torque measured without seals is 2-3 times higher than T_p . The influence of seal friction, lubrication, temperature etc. may result in even higher starting torques. Consult Rollco if start torque is critical for your application.

Mounting Methods

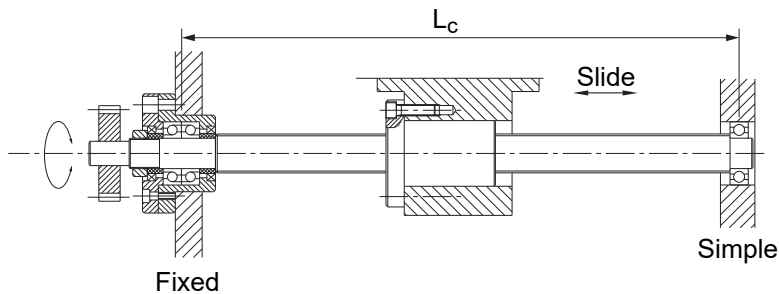
The way the screw shaft is supported and fixed in the ends determine both the Critical shaft speed and the buckling load. By using combinations of Rollco support units, type 1, 3 and 4 can be arranged:



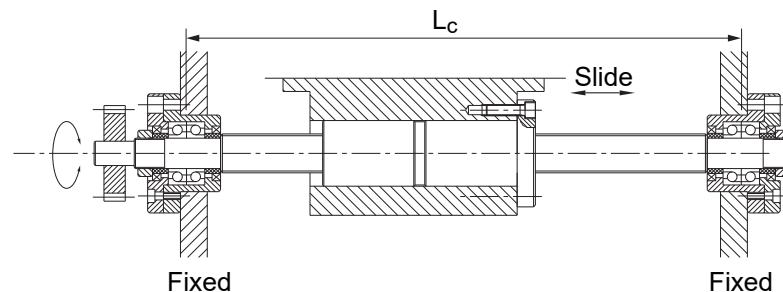
Type 1



Type 2



Type 3



Type 4

The most common and strongly recommended combination is the Type 3 “Fixed-Simple” and for short strokes, Type 1 “Fixed-Free”. Type 4 “Fixed-Fixed” requires very careful mounting and should only be used in specific cases, consult Rollco. Type 2 “Simple-Simple” is sometimes an economic solution but is limited in load capacity and will always have a quite large axial play. The axially free end can be utilized using Rollco units type BFN and FFN but we do not offer any unit with axially fixed single bearing.

Buckling Load

If a ball screw is loaded in compression, it will at a certain load level go into elastic buckling and collapse! The type of Mounting Method have large influence on this limit, along with the diameter and the free length of the ball screw shaft. The best way to avoid risk of buckling is always to identify the main load direction and to place the Fixed bearing unit in the end where it make the screw shaft receive the largest force in tension.

The critical buckling load, including a safety factor 3 is calculated using:

$$F_c = \frac{34000 \cdot f_3 \cdot d_2^4}{L_c^2}$$

F_c = Buckling strength (N)

d_2 = Root diameter* of screw shaft (mm)
* $d_2 = d - D_a$ (nominal shaft diameter minus ball diameter D_a)

L_c = Critical length (mm), the distance between center of bearing units or the free end

f_3 = Mounting method factor for buckling

Mounting method	Factor f_3
Type 1, fixed-free	0,25
Type 2, simple-simple	1
Type 3, fixed-simple	2
Type 4, fixed-fixed	4

Critical Speed of the Screw Shaft

Any rotating shaft have an eigenfrequency that needs to be avoided. If the nut is linearly guided, hitting the eigenfrequency (resonance) will create vibrations, noise and excessive wear. In a system with an un-guided nut, the resonance will make the system to collapse by bending of the shaft.

The critical speed is calculated using:

$$n_{cr} = 49 \cdot 10^6 \frac{f_1 \cdot d_2}{L_c^2}$$

n_{cr} = Critical speed (rpm)

d_2 = Root diameter* of screw shaft (mm)
* $d_2 = d - D_a$ (nominal shaft diameter minus ball diameter D_a)

L_c = Critical length (mm), the distance between center of bearing units or the free end

f_1 = Mounting method factor for critical speed

Mounting method	Factor f_1
Type 1, fixed-free	0,9
Type 2, simple-simple	2,5
Type 3, fixed-simple	3,8
Type 4, fixed-fixed	5,6

Limiting Speed of the Ball Nut

All ball nuts have some type of ball recirculation mechanism. The deflection of the balls creates increasing forces, wear and noise as the speed increases. The limiting speed of the nut is called the speed product and is designated “dm · n”. Effectively, dm is equal to the nominal diameter “d” of the ball screw and “n” is the speed in rpm.

Limiting speed of Rolco ball nuts are:

Type	dm · n limit
SFKR	70 000
RSKR	70 000
RSCR	70 000
FSCR, lead 5 & 10	70 000
FSCR, lead 20	100 000
FSCRN 1610	100 000
FDCR	70 000
FSER	100 000
SFYR	100 000

The rule is:

$$dm \cdot n \text{ limit} \geq d \cdot n_{(max)}$$

d = ball screw diameter

$n_{(max)}$ = highest speed used in the application

If the product exceed the “dm · n limit”, a lower rotational speed must be used, most common is to select a ball screw with higher lead to be able to keep the desired linear speed.

It is recommended to only utilize 80 % of the “dm · n limit” for long life applications. Exceeding the “dm · n limit” may cause destruction of the recirculation mechanism and will at least shorten the life and reliability of the ball nut.

Life Calculation

Nominal Life Calculation of Ball Screws

As a general advise, there is normally no need to make any detailed life calculation if real load vs the Ca-value is 5 or greater. A long life will be achieved for most applications and conditions using this simple rule. But if size and cost restrict you, an optimization may be required.

As with all ball and roller based bearings there is a theory of how to calculate the fatigue life, applicable also for ball screws. The basic life theory L10 is well proven and the result represent a 90% probability to reach or exceed the calculated life. Definition of fatigue life is when the material of the rolling elements or raceways start to fail (flake). In reality, there are a number of other factors influences the service life, mainly the lubrication conditions, assembly precision and cleanliness during operation.

A nominal life for ball screws can be calculated using:

$$L_{10nom} = \left(\frac{C_a}{P_a \cdot f_w} \right)^3$$

- L_{10nom} = Nominal fatigue life in millions of revolutions
- C_a = Basic dynamic load rating (N)
- P_a = Equivalent axial load (N)
- f_w = Load factor for ball screw

Level of vibration and impact	Relative speed (% of dm·n)	f_w
Low	5 - 50 %	1,0 – 1,2
Medium	50 - 80 %	1,2 – 1,5
High	< 1 % or > 80 %	1,5 – 3,0

The selection of f_w have very strong impact on the calculation. If in doubt how to select suitable load factor for your application, please contact Rollco for support.

The equivalent load P_a is the cubic mean load over distance. In most cases, it is enough to use the highest load that occurs in the application. Contact Rollco if optimization is required.

Nominal Life Calculation of Fixed Bearing Units

The fatigue life of fixed bearing units follows the same basic theory as the ball screws. However, due to the construction of the units and type of bearings, there are a “Permissible loads” to take into account. The load factor for bearing units also have lower values as the speed used have very low derating influence.

A nominal life for fixed bearing units can be calculated using:

$$L_{10nom} = \left(\frac{C_a}{P_a \cdot f_{wKU}} \right)^3$$

- L_{10nom} = Nominal fatigue life in millions of revolutions
- C_a = Basic dynamic load rating (N)
- P_a = Equivalent axial load (N)
- f_{wKU} = Load factor for fixed bearing unit

Valid only if the actual load during motion is kept below the Dynamic Permissible axial Load!

Level of vibration and impact	f_{wKU}
Low	1,0 – 1,1
Medium	1,1 – 1,3
High	1,3 – 2,0

Static Loads

For applications not requiring a very long life, the static load rating may be the limiting factor. Every application should however be checked for the static safety factor to avoid damage and shortened life.

For ball screws:

$$F_{\max} \leq s_0 \cdot C_{a0} \dots \text{or} \dots C_{a0} \geq s_0 \cdot F_{\max}$$

F_{\max} = the highest occurring force in the application (N)

C_{a0} = static load rating of the ball nut

s_0 = static safety factor

Recommended static safety factors:

Category	Application characteristics	Typical machinery	s_0
1	High accuracy of assembly, 100% control of occurring forces, low dynamics, no shock loads.	Material test benches, precision machines.	1,5
2	Normal assembly precision, moderate speeds and accelerations, small chock loads.	Automation, material handling equipment, light machine tools.	2,5
3	High speeds and accelerations and/or heavy vibrations and shock loads	High speed automation, normal machine tools	3 to 5
4	Heavy shock and vibrations	Press tool, riveting, metal forming and cutting tools	5 to 10

For Rollco fixed bearing units, the “Static Permissible axial Load” can be used in general.

For category 4 an additional safety margin may be needed. Always consult Rollco for demanding applications.

Angular Acceleration

At quick rotational speed changes, the balls in the ball nut may slide instead of roll. This will cause more or less damage to the balls or the raceways. A lot of factors of both the ball nut and the application conditions influence if slipping will occur or not.

Our recommendation is to avoid long term use of angular accelerations above 3000 rad/s²

Lead mm	Linear acceleration m/s ²
1	1,0
2	1,9
2,5	2,4
4	3,8
5	4,8
10	10
16	15
20	19
25	24
32	31
40	38
50	48

Linear acceleration for different leads at 3000 rad/s².

Torque and Force

The torque needed to produce a linear force is calculated using this formula:

$$T = \frac{F \cdot l}{2000 \cdot \pi \cdot \eta_p}$$

T = Drive torque (Nm)

F = Axial load on the ball nut (N)

l = Lead (mm)

η = Practical efficiency (typical 0,8)

The theoretical efficiency of a ball screw is between 90 to 96 % depending on design and load conditions. For all common applications, we recommend to calculate with a practical efficiency of 80%.

If the brake or holding torque needs to be calculated:

$$T_B = \frac{F \cdot l \cdot \eta'}{2000 \cdot \pi}$$

T_B = brake torque (Nm)

η' = Theoretical indirect efficiency (typical 0,95)

When calculating holding torque, the theoretical indirect efficiency is used of safety reasons.

Lubrication

For a ball screw or any ball and roller based bearing, clean and sufficient lubrication is essential to achieve the predicted life and performance. Rollco ball screws do not offer any "life time lubricated" solutions, periodic re-lubrication is mandatory.

Rollco bearing units are closed and sealed and can normally be operated w/o re-lubrication 10 000 to 30 000 h. If a reliable service life exceeding 5 years are required, re-lubrication or exchange of the bearing units are recommended. On request, the fixed bearing units can be supplied with grease nipple.

Grease Lubrication

For ball screws of lead 5 mm or above, the basic recommendation is to use a lithium complex based grease of NLGI grade 2 with a base oil viscosity of 46 to 100 cSt. Smaller lead ball screws benefit and work better with a less stiff grease, for example NLGI 1 or NLGI 1,5.

Additives

It has shown that grease containing additives such as graphite or MoS₂ does not work well with ball screws as the particles tend to build up and cause blocking of the recirculation mechanism.

Oil Lubrication

Continuous oil lubrication is many times a good way to ensure a long life of any bearing type. The cost of an automatic lubrication system has to be compared to the cost of more frequent failures and part replacements. The main advantages of oil lubrication is that it keeps the ball nut clean, offers the lowest friction and acts like a coolant.

General Advice for Ball Screw Grease Re-lubrication:

For all ball nuts having a seal or wiper:

Every 50 million revolutions or after 500 hours operation time, whatever occurs first.

Screw lead	Distance @ 50 Mrev
2,5	125 km
3	150 km
4	200 km
5	250 km
10	500 km
16	800 km
20	1000 km
25	1250 km
32	1600 km
40	2000 km
50	2500 km

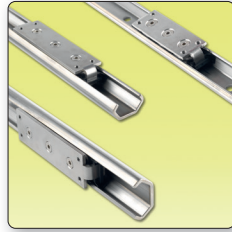
Recommendation above valid for typical operation conditions:

- Temperature +10 to +30°C
- Load ≤ 0,2*Ca
- Speed ≤ 80% of max recommended dm·n

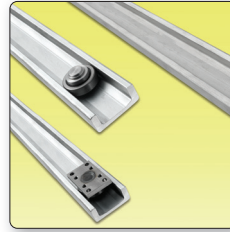
Rollco Products



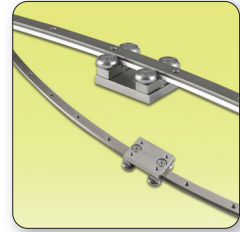
COMPACT RAIL



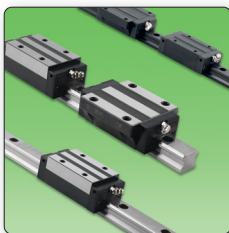
C-RAIL



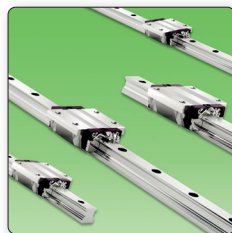
U-RAIL



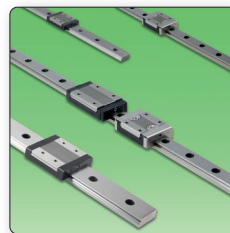
CURVI LINE



LINEAR RAIL SBI



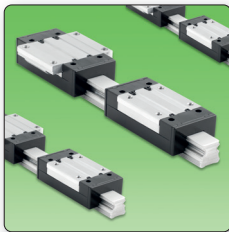
**LINEAR RAIL
HRC/ARC/ERC**



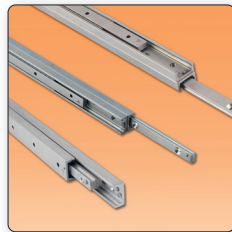
**LINEAR MINIATURE
GUIDE**



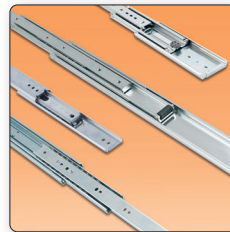
**LINEAR ROLLER
GUIDE**



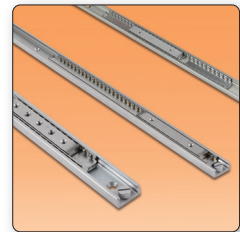
**LINEAR RAIL
ALUMINIUM**



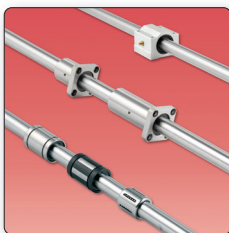
**TELESCOPIC RAIL
HEAVY**



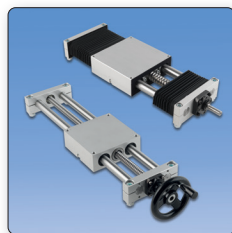
**TELESCOPIC RAIL
LIGHT**



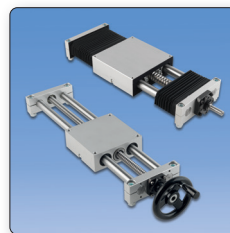
EASYSLIDE



**BALL BEARINGS
& STEEL SHAFTS**



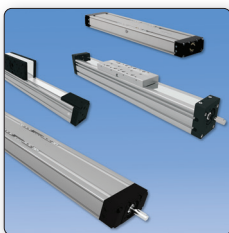
LINEAR UNIT QME



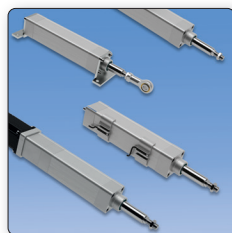
LINEAR UNIT QME



LINEAR UNIT E-SMART



LINEAR UNITS CT & MT



**PNCE ELECTRO-
MECHANICAL CYLINDERS**



**ALUMINIUM
PROFILES**



BELT CONVEYORS

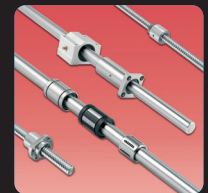
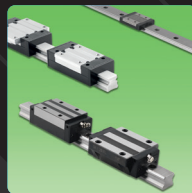
Rollco AB
Box 22234
Ekvändan 3
250 24 Helsingborg
Sweden
Tel. +46 42 150040
www.rollco.se

Rollco A/S
Skomagervej 13 E
7100 Vejle
Denmark
Tel. +45 7552 2666
www.rollco.dk

Rollco Oy
Sarankulmankatu 12
33900 Tampere
Finland
Tel. +358 207 57 97 90
www.rollco.fi

Rollco Norge AS
Industrigata 6
3414 Lierstrada
Norway
Tel. +47 32 84 00 34
www.rollco.no

Rollco Taiwan
No. 28, Lane 125, Da-an Road
Shulin District 238
New Taipei City, Taiwan
Tel. +886-2-8687-2726
Fax +886-2-8687-2720
www.rollco-tw.com



ROLLCO
SPECIALIZED
ON LINEAR MOTION