

# ALUMINIUM PROFILES



**ROLLCO**

SPECIALIZED  
ON LINEAR MOTION

---

**CLIMATE  
COMPENSATED  
PAPER**

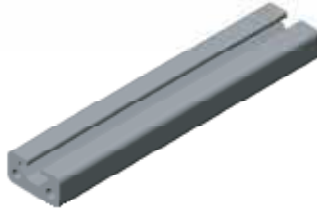
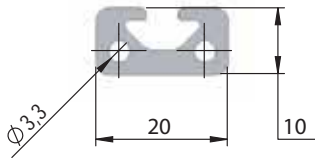


## Index

Profile system 5 .....	4-6
Profile system 6 .....	7-11
profile system 8 .....	12-21
Conduits .....	22
Fastening set .....	23-31
Hinges .....	32-33
Angles .....	34-35
T-slot nuts .....	36-37
Caps .....	38-39
Cover profiles & fastening profiles for panels .....	40-42
Multiblock .....	43
Hinges .....	44-47
Brackets, angle brackets & angle set .....	48-50
Handles .....	51-53
Locking systems .....	54
Knuckle & L-based foot .....	55-56
Rubber insert .....	57
Foot plates .....	58
Accessories .....	59-60
Sensor & cable holders .....	61
Castors .....	62
Linear components & solutions .....	63

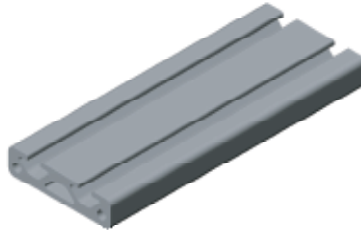
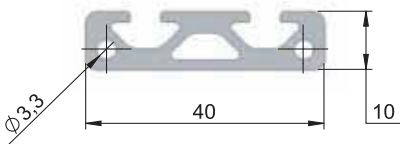
# Profile System 5

**Profile 10x20** Article No. PP4010



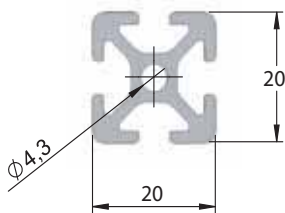
lx	0,53 cm <sup>4</sup>
ly	0,12 cm <sup>4</sup>
Wx	0,53 cm <sup>3</sup>
Wy	0,22 cm <sup>3</sup>
Profile area	1,29 cm <sup>2</sup>
Length max	6 m
Weight	0,35 kg/m

**Profile 10x40** Article No. PP4020



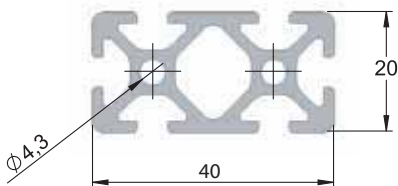
lx	3,63 cm <sup>4</sup>
ly	0,24 cm <sup>4</sup>
Wx	1,81 cm <sup>3</sup>
Wy	0,44 cm <sup>3</sup>
Profile area	2,36 cm <sup>2</sup>
Length max	6 m
Weight	0,64 kg/m

**Profile 20x20** Article No. PP4030



lx	0,73 cm <sup>4</sup>
ly	0,73 cm <sup>4</sup>
Wx	0,73 cm <sup>3</sup>
Wy	0,73 cm <sup>3</sup>
Profile area	1,82 cm <sup>2</sup>
Length max	6 m
Weight	0,49 kg/m

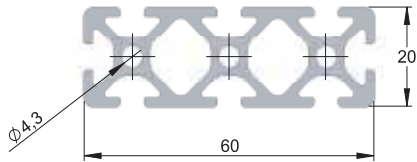
**Profile 20x40** Article No. PP4040



lx	1,41 cm <sup>4</sup>
ly	5,14 cm <sup>4</sup>
Wx	1,41 cm <sup>3</sup>
Wy	2,57 cm <sup>3</sup>
Profile area	3,32 cm <sup>2</sup>
Length max	6 m
Weight	0,89 kg/m

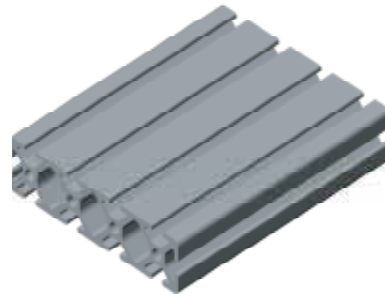
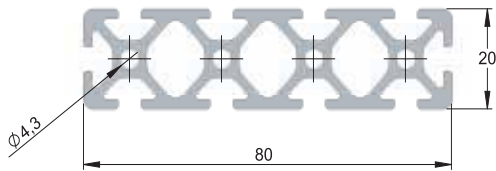
# Profile System 5

**Profile 20x60** Article No. PP4050



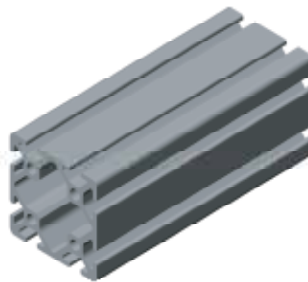
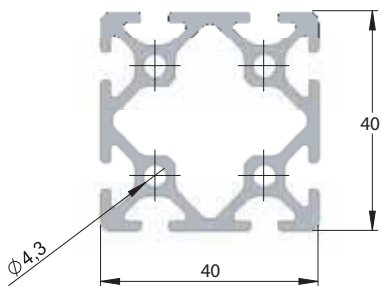
ix	2,06 cm <sup>4</sup>
ly	16,09 cm <sup>4</sup>
Wx	2,06 cm <sup>3</sup>
Wy	5,36 cm <sup>3</sup>
Profile area	4,76 cm <sup>2</sup>
Length max	6 m
Weight	1,28 kg/m

**Profile 20x80** Article No. PP4060



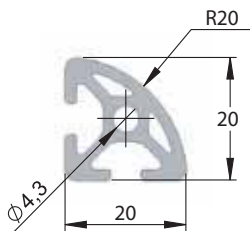
ix	2,72 cm <sup>4</sup>
ly	36,08 cm <sup>4</sup>
Wx	2,72 cm <sup>3</sup>
Wy	9,02 cm <sup>3</sup>
Profile area	6,19 cm <sup>2</sup>
Length max	6 m
Weight	1,67 kg/m

**Profile 40x40** Article No. PP4070



ix	9,3 cm <sup>4</sup>
ly	9,3 cm <sup>4</sup>
Wx	4,65 cm <sup>3</sup>
Wy	4,65 cm <sup>3</sup>
Profile area	5,14 cm <sup>2</sup>
Length max	6 m
Weight	1,39 kg/m

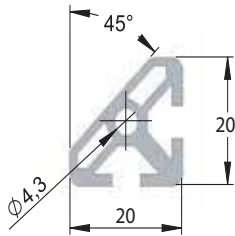
**Profile 20x20 R 90°** Article No. PP4110



ix	0,6 cm <sup>4</sup>
ly	0,6 cm <sup>4</sup>
Wx	0,55 cm <sup>3</sup>
Wy	0,55 cm <sup>3</sup>
Profile area	1,76 cm <sup>2</sup>
Length max	3 m
Weight	0,48 kg/m

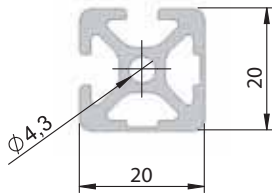
# Profile System 5

**Profile 20x20 45°** Article No. PP4120



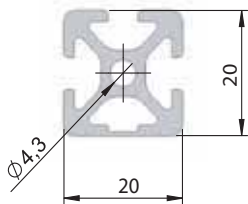
$I_x$	0,5 cm <sup>4</sup>
$I_y$	0,5 cm <sup>4</sup>
$W_x$	0,43 cm <sup>3</sup>
$W_y$	0,43 cm <sup>3</sup>
Profile area	1,44 cm <sup>2</sup>
Length max	3 m
Weight	0,39 kg/m

**Profile 20x20 2N90** Article No. PP4900



$I_x$	0,78 cm <sup>4</sup>
$I_y$	0,78 cm <sup>4</sup>
$W_x$	76 cm <sup>3</sup>
$W_y$	76 cm <sup>3</sup>
Profile area	1,91 cm <sup>2</sup>
Length max	6 m
Weight	0,51 kg/m

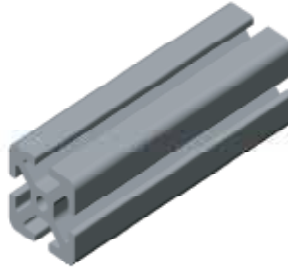
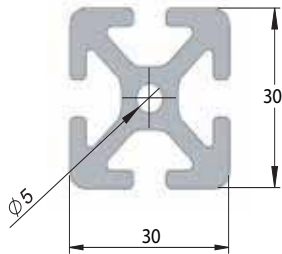
**Profile 20x20 3N** Article No. PP4901



$I_x$	0,74 cm <sup>4</sup>
$I_y$	0,77 cm <sup>4</sup>
$W_x$	74 cm <sup>3</sup>
$W_y$	74 cm <sup>3</sup>
Profile area	1,85 cm <sup>2</sup>
Length max	6 m
Weight	0,5 kg/m

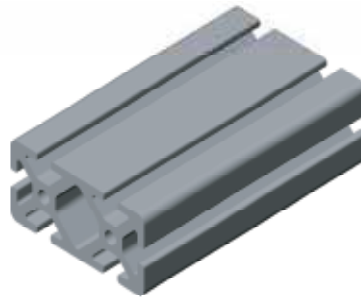
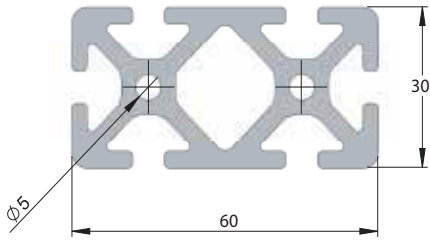
# Profile System 6

## Profile 30x30 Article No. PP3010



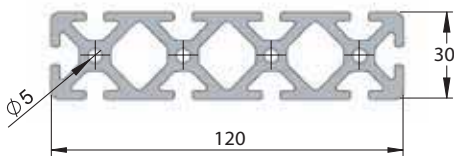
ix	2,9 cm <sup>4</sup>
ly	2,9 cm <sup>4</sup>
Wx	1,94 cm <sup>3</sup>
Wy	1,94 cm <sup>3</sup>
Profile area	3,43 cm <sup>2</sup>
Length max	6 m
Weight	0,93 kg/m

## Profile 30x60 Article No. PP3020



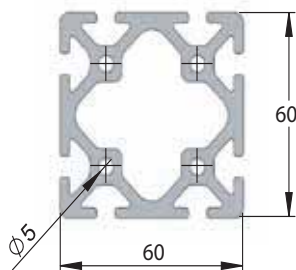
ix	7,92 cm <sup>4</sup>
ly	29,3 cm <sup>4</sup>
Wx	5,28 cm <sup>3</sup>
Wy	9,77 cm <sup>3</sup>
Profile area	8,47 cm <sup>2</sup>
Length max	6 m
Weight	2,29 kg/m

## Profile 30x120 Article No. PP3030



ix	15,42 cm <sup>4</sup>
ly	210,94 cm <sup>4</sup>
Wx	10,28 cm <sup>3</sup>
Wy	35,16 cm <sup>3</sup>
Profile area	16 cm <sup>2</sup>
Length max	6 m
Weight	4,32 kg/m

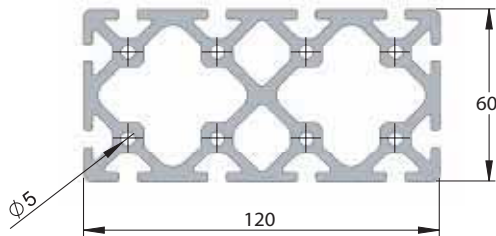
## Profile 60x60 Article No. PP3040



ix	53,77 cm <sup>4</sup>
ly	53,77 cm <sup>4</sup>
Wx	17,92 cm <sup>3</sup>
Wy	17,92 cm <sup>3</sup>
Profile area	13,33 cm <sup>2</sup>
Length max	6 m
Weight	3,6 kg/m

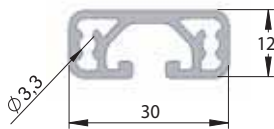
# Profile System 6

**Profile 60x120** Article No. PP3050



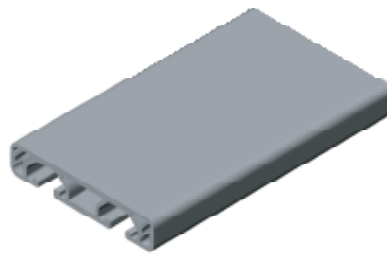
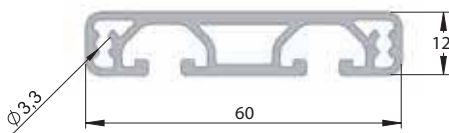
lx	102,71 cm <sup>4</sup>
ly	347,62 cm <sup>4</sup>
Wx	34,24 cm <sup>3</sup>
Wy	57,94 cm <sup>3</sup>
Profile area	24,84 cm <sup>2</sup>
Length max	6 m
Weight	6,71 kg/m

**Profile 12x30 Light** Article No. PP3053



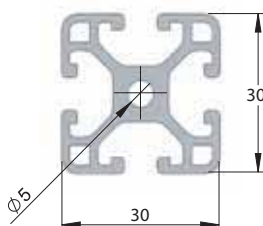
lx	0,25 cm <sup>4</sup>
ly	1,46 cm <sup>4</sup>
Wx	0,39 cm <sup>3</sup>
Wy	0,98 cm <sup>3</sup>
Profile area	1,58 cm <sup>2</sup>
Length max	6 m
Weight	0,43 kg/m

**Profile 12x60 Light** Article No. PP3055



lx	0,53 cm <sup>4</sup>
ly	10 cm <sup>4</sup>
Wx	0,83 cm <sup>3</sup>
Wy	3,34 cm <sup>3</sup>
Profile area	2,98 cm <sup>2</sup>
Length max	6 m
Weight	0,81 kg/m

**Profile 30x30 Light** Article No. PP3060

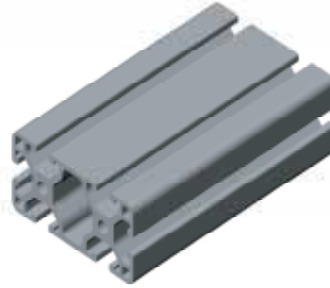
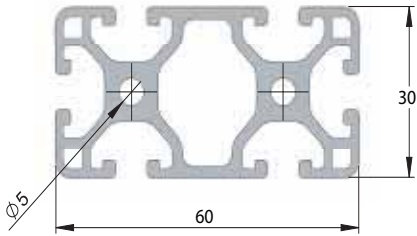


lx	2,9 cm <sup>4</sup>
ly	2,9 cm <sup>4</sup>
Wx	1,94 cm <sup>3</sup>
Wy	1,94 cm <sup>3</sup>
Profile area	3,43 cm <sup>2</sup>
Length max	6 m
Weight	0,93 kg/m



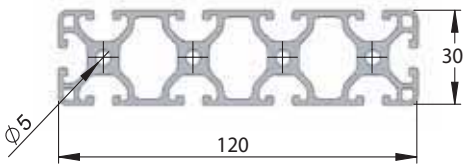
# Profile System 6

**Profile 30x60 Light** Article No. PP3070



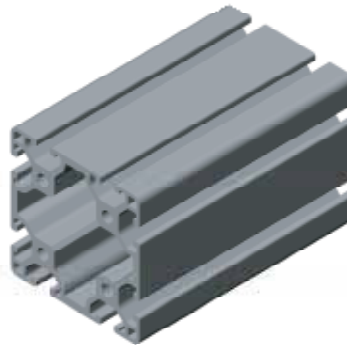
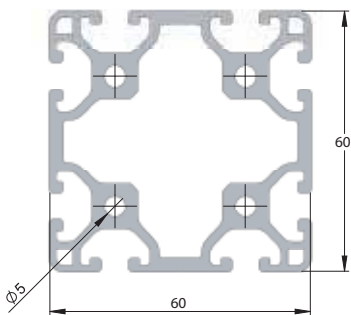
ix	5,54 cm <sup>4</sup>
ly	21,22 cm <sup>4</sup>
Wx	3,69 cm <sup>3</sup>
Wy	7,07 cm <sup>3</sup>
Profile area	6,13 cm <sup>2</sup>
Length max	6 m
Weight	1,65 kg/m

**Profile 30x120 Light** Article No. PP3080



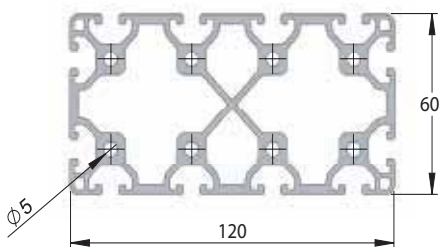
ix	10,82 cm <sup>4</sup>
ly	152,65 cm <sup>4</sup>
Wx	7,21 cm <sup>3</sup>
Wy	25,44 cm <sup>3</sup>
Profile area	11,53 cm <sup>2</sup>
Length max	6 m
Weight	3,11 kg/m

**Profile 60x60 Light** Article No. PP3090



ix	39,47 cm <sup>4</sup>
ly	39,47 cm <sup>4</sup>
Wx	13,16 cm <sup>3</sup>
Wy	13,16 cm <sup>3</sup>
Profile area	10,01 cm <sup>2</sup>
Length max	6 m
Weight	2,7 kg/m

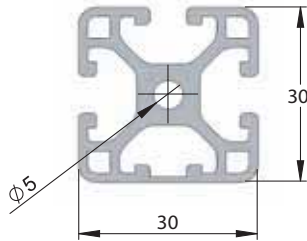
**Profile 60x120 Light** Article No. PP3100



ix	76,61 cm <sup>4</sup>
ly	259,65 cm <sup>4</sup>
Wx	25,54 cm <sup>3</sup>
Wy	43,27 cm <sup>3</sup>
Profile area	18,7 cm <sup>2</sup>
Length max	6 m
Weight	5,05 kg/m

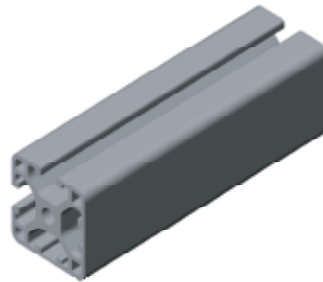
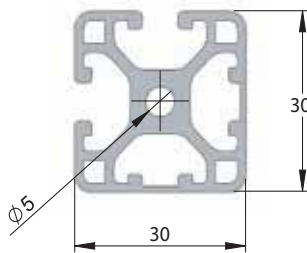
# Profile System 6

**Profile 30x30 3N Light** Article No. PP3110



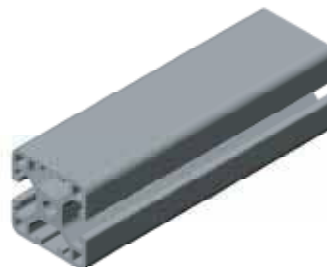
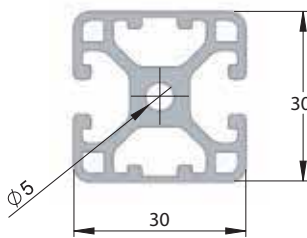
lx	2,91 cm <sup>4</sup>
ly	3,01 cm <sup>4</sup>
Wx	1,94 cm <sup>3</sup>
Wy	1,98 cm <sup>3</sup>
Profile area	3,49 cm <sup>2</sup>
Length max	6 m
Weight	0,94 kg/m

**Profile 30x30 2N 90° Light** Article No. PP3120



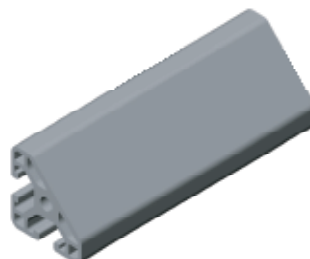
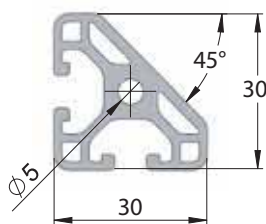
lx	3,02 cm <sup>4</sup>
ly	3,02 cm <sup>4</sup>
Wx	1,98 cm <sup>3</sup>
Wy	1,98 cm <sup>3</sup>
Profile area	3,54 cm <sup>2</sup>
Length max	6 m
Weight	0,96 kg/m

**Profile 30x30 2N 180° Light** Article No. PP3130



lx	2,90 cm <sup>4</sup>
ly	3,14 cm <sup>4</sup>
Wx	1,93 cm <sup>3</sup>
Wy	2,09 cm <sup>3</sup>
Profile area	3,54 cm <sup>2</sup>
Length max	6 m
Weight	0,96 kg/m

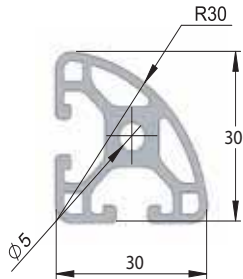
**Profile 30x30 45° Light** Article No. PP3150



lx	2,21 cm <sup>4</sup>
ly	2,21 cm <sup>4</sup>
Wx	1,33 cm <sup>3</sup>
Wy	1,33 cm <sup>3</sup>
Profile area	3,12 cm <sup>2</sup>
Length max	6 m
Weight	0,84 kg/m

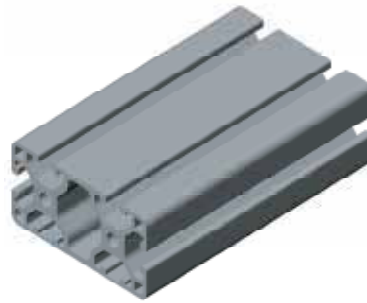
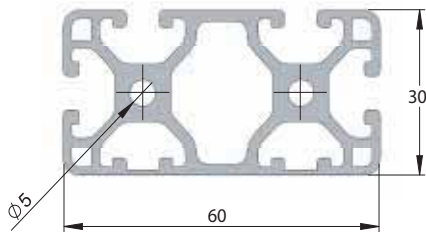
# Profile System 6

## Profile 30x30 90° Light Article No. PP3160



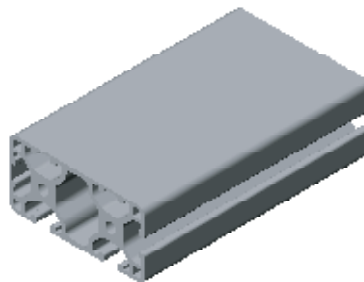
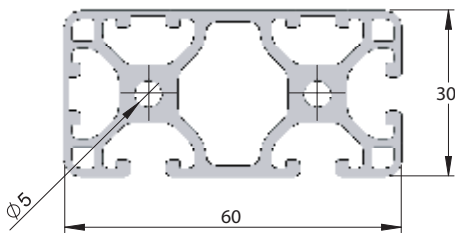
ix	2,16 cm <sup>4</sup>
ly	2,16 cm <sup>4</sup>
Wx	1,32 cm <sup>3</sup>
Wy	1,32 cm <sup>3</sup>
Profile area	3,07 cm <sup>2</sup>
Length max	6 m
Weight	0,83 kg/m

## Profile 30x60 4N 270° Light Article No. PP3170



ix	5,77 cm <sup>4</sup>
ly	21,47 cm <sup>4</sup>
Wx	3,78 cm <sup>3</sup>
Wy	7,16 cm <sup>3</sup>
Profile area	6,24 cm <sup>2</sup>
Length max	6 m
Weight	1,68 kg/m

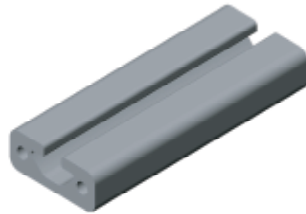
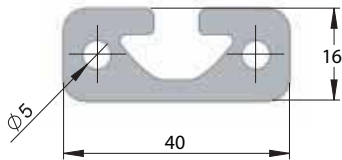
## Profile 30x60 3N 90° Light Article No. PP3900



ix	5,77 cm <sup>4</sup>
ly	21,97 cm <sup>4</sup>
Wx	3,78 cm <sup>3</sup>
Wy	7,26 cm <sup>3</sup>
Profile area	6,30 cm <sup>2</sup>
Length max	6 m
Weight	1,7 kg/m

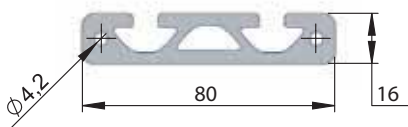
# Profile System 8

**Profile 16x40** Article No. PP1010



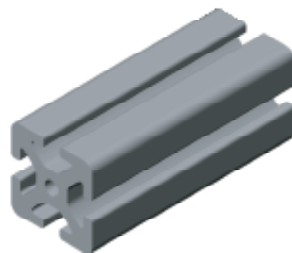
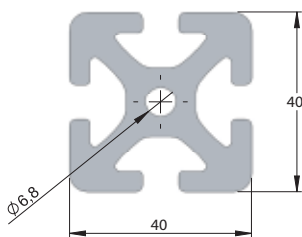
$I_x$	1,06 cm <sup>4</sup>
$I_y$	6,75 cm <sup>4</sup>
$W_x$	1,25 cm <sup>3</sup>
$W_y$	3,37 cm <sup>3</sup>
Profile area	4,15 cm <sup>2</sup>
Length max	6 m
Weight	1,12 kg/m

**Profile 16x80** Article No. PP1020



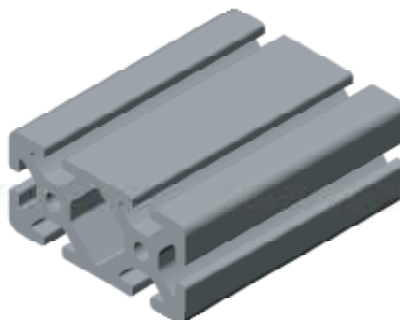
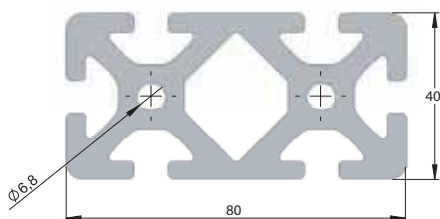
$I_x$	2,17 cm <sup>4</sup>
$I_y$	48,34 cm <sup>4</sup>
$W_x$	2,58 cm <sup>3</sup>
$W_y$	12,07 cm <sup>3</sup>
Profile area	8,01 cm <sup>2</sup>
Length max	6 m
Weight	2,17 kg/m

**Profile 40x40** Article No. PP1030



$I_x$	13,85 cm <sup>4</sup>
$I_y$	13,85 cm <sup>4</sup>
$W_x$	6,95 cm <sup>3</sup>
$W_y$	6,95 cm <sup>3</sup>
Profile area	9,05 cm <sup>2</sup>
Length max	6 m
Weight	2,45 kg/m

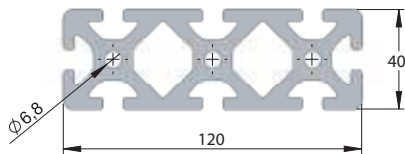
**Profile 40x80** Article No. PP1040



$I_x$	26,7 cm <sup>4</sup>
$I_y$	101,02 cm <sup>4</sup>
$W_x$	13,39 cm <sup>3</sup>
$W_y$	25,15 cm <sup>3</sup>
Profile area	16,52 cm <sup>2</sup>
Length max	6 m
Weight	4,51 kg/m

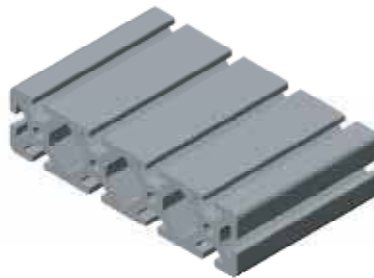
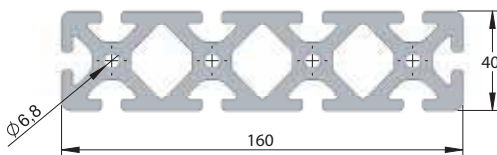
# Profile System 8

## Profile 40x120 Article No. PP1050



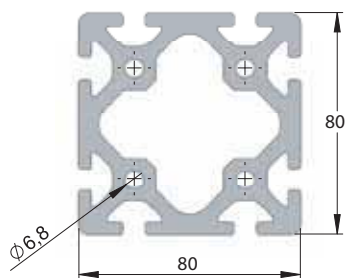
ix	38,44 cm <sup>4</sup>
ly	291,98 cm <sup>4</sup>
Wx	19,18 cm <sup>3</sup>
Wy	48,64 cm <sup>3</sup>
Profile area	22,76 cm <sup>2</sup>
Length max	6 m
Weight	6,19 kg/m

## Profile 40x160 Article No. PP1060



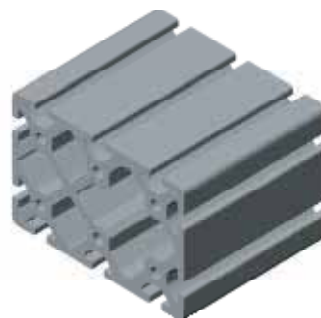
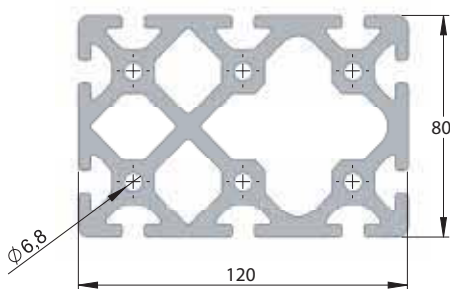
ix	52,71 cm <sup>4</sup>
ly	731,63 cm <sup>4</sup>
Wx	26,31 cm <sup>3</sup>
Wy	91,31 cm <sup>3</sup>
Profile area	31,06 cm <sup>2</sup>
Length max	6 m
Weight	8,3 kg/m

## Profile 80x80 Article No. PP1070



ix	187,8 cm <sup>4</sup>
ly	187,8 cm <sup>4</sup>
Wx	46,93 cm <sup>3</sup>
Wy	46,93 cm <sup>3</sup>
Profile area	26,65 cm <sup>2</sup>
Length max	6 m
Weight	7,2 kg/m

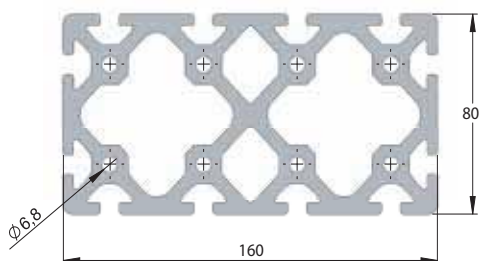
## Profile 80x120 Article No. PP1080



ix	273,15 cm <sup>4</sup>
ly	574,86 cm <sup>4</sup>
Wx	68,03 cm <sup>3</sup>
Wy	92,23 cm <sup>3</sup>
Profile area	39,97 cm <sup>2</sup>
Length max	6 m
Weight	10,76 kg/m

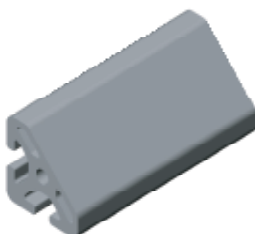
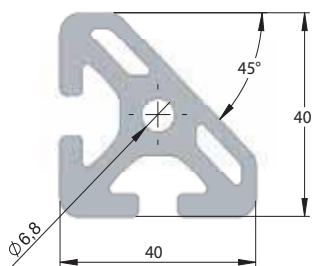
# Profile System 8

**Profile 80x160** Article No. PP1090



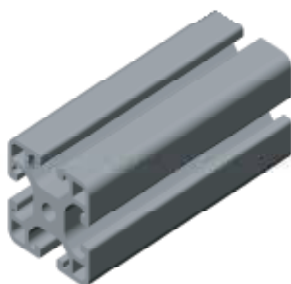
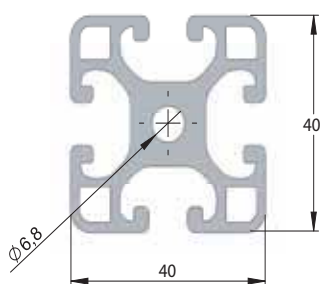
lx	362,15 cm <sup>4</sup>
ly	1232,14 cm <sup>4</sup>
Wx	90,52 cm <sup>3</sup>
Wy	154 cm <sup>3</sup>
Profile area	49,96 cm <sup>2</sup>
Length max	6 m
Weight	13,59 kg/m

**Profile 40x40 45°** Article No. PP1100



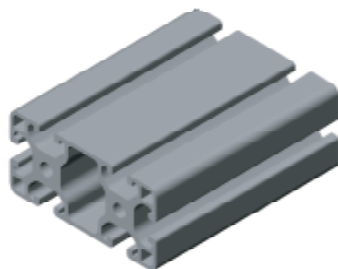
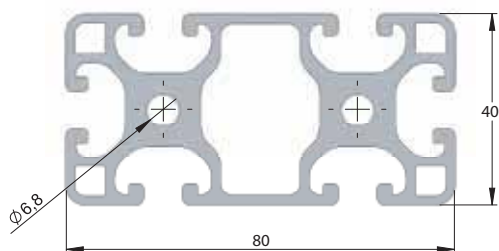
lx	9,34 cm <sup>4</sup>
ly	9,34 cm <sup>4</sup>
Wx	4,06 cm <sup>3</sup>
Wy	4,06 cm <sup>3</sup>
Profile area	7,12 cm <sup>2</sup>
Length max	6 m
Weight	1,92 kg/m

**Profile 40x40 Light** Article No. PP1130



lx	9,1 cm <sup>4</sup>
ly	9,1 cm <sup>4</sup>
Wx	4,55 cm <sup>3</sup>
Wy	4,55 cm <sup>3</sup>
Profile area	6,47 cm <sup>2</sup>
Length max	6 m
Weight	1,75 kg/m

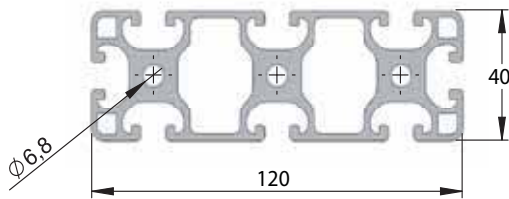
**Profile 40x80 Light** Article No. PP1140



lx	16,77 cm <sup>4</sup>
ly	70,2 cm <sup>4</sup>
Wx	8,45 cm <sup>3</sup>
Wy	17,56 cm <sup>3</sup>
Profile area	11,3 cm <sup>2</sup>
Length max	6 m
Weight	3,08 kg/m

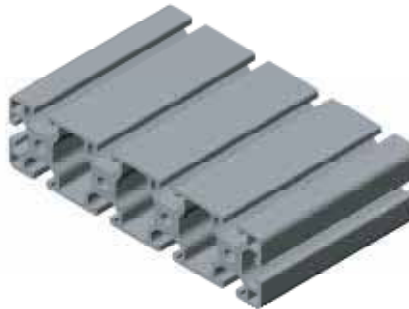
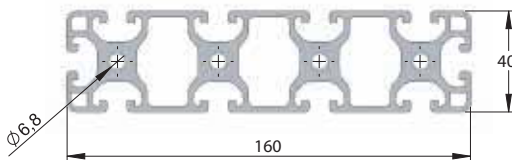
# Profile System 8

## Profile 40x120 Light Article No. PP1155



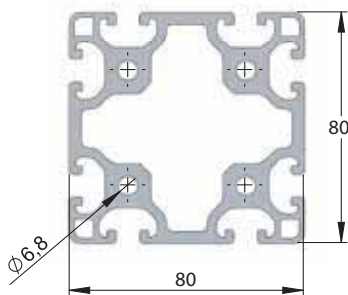
ix	24,22 cm <sup>4</sup>
ly	220,54 cm <sup>4</sup>
Wx	12,1 cm <sup>3</sup>
Wy	36,76 cm <sup>3</sup>
Profile area	16,12 cm <sup>2</sup>
Length max	6 m
Weight	4,35 kg/m

## Profile 40x160 Light Article No. PP1160



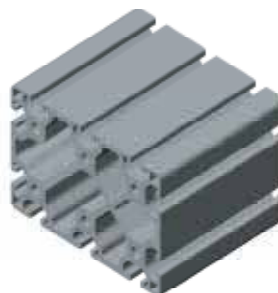
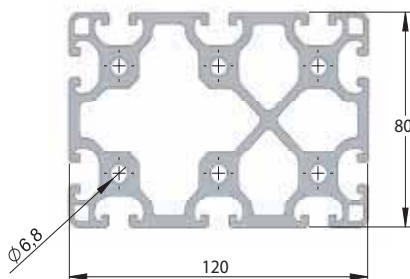
ix	31,79 cm <sup>4</sup>
ly	500,1 cm <sup>4</sup>
Wx	15,87 cm <sup>3</sup>
Wy	62,5 cm <sup>3</sup>
Profile area	20,85 cm <sup>2</sup>
Length max	6 m
Weight	5,6 kg/m

## Profile 80x80 Light Article No. PP1170



ix	130,1 cm <sup>4</sup>
ly	130,1 cm <sup>4</sup>
Wx	33,2 cm <sup>3</sup>
Wy	33,2 cm <sup>3</sup>
Profile area	19,3 cm <sup>2</sup>
Length max	6 m
Weight	5,17 kg/m

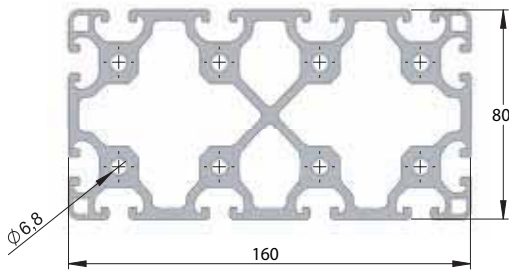
## Profile 80x120 Light Article No. PP1190



ix	201,9 cm <sup>4</sup>
ly	421,68 cm <sup>4</sup>
Wx	50,47 cm <sup>3</sup>
Wy	68,34 cm <sup>3</sup>
Profile area	30,14 cm <sup>2</sup>
Length max	6 m
Weight	8,14 kg/m

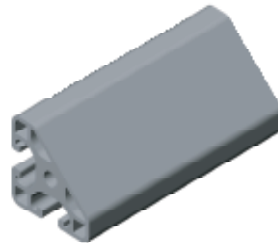
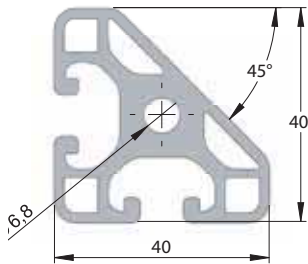
# Profile System 8

**Profile 80x160 Light** Article No. PP1200



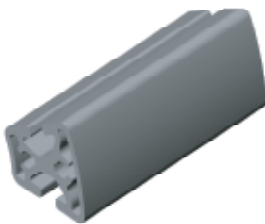
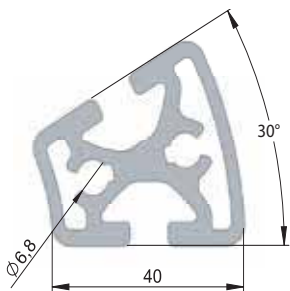
lx	268,5 cm <sup>4</sup>
ly	918,5 cm <sup>4</sup>
Wx	67,5 cm <sup>3</sup>
Wy	113,8 cm <sup>3</sup>
Profile area	37,89 cm <sup>2</sup>
Length max	6 m
Weight	10,31 kg/m

**Profile 40x40 45° Light** Article No. PP1210



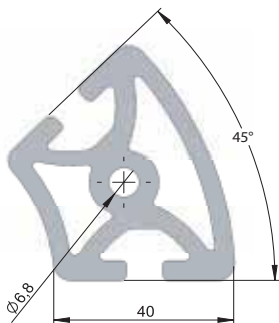
lx	6,5 cm <sup>4</sup>
ly	6,5 cm <sup>4</sup>
Wx	2,91 cm <sup>3</sup>
Wy	2,91 cm <sup>3</sup>
Profile area	5,68 cm <sup>2</sup>
Length max	6 m
Weight	1,5 kg/m

**Profile R 40/80 30°** Article No. PP1220



lx	6,41 cm <sup>4</sup>
ly	8,9 cm <sup>4</sup>
Wx	2,83 cm <sup>3</sup>
Wy	3,8 cm <sup>3</sup>
Profile area	6,2 cm <sup>2</sup>
Length max	6 m
Weight	1,67 kg/m

**Profile R 40/80 45°** Article No. PP1230

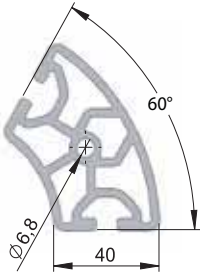


lx	21,29 cm <sup>4</sup>
ly	16,02 cm <sup>4</sup>
Wx	6,77 cm <sup>3</sup>
Wy	6,13 cm <sup>3</sup>
Profile area	10,19 cm <sup>2</sup>
Length max	6 m
Weight	2,72 kg/m



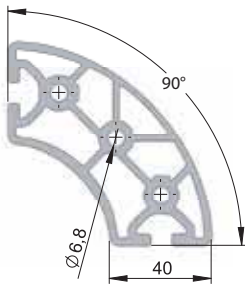
# Profile System 8

**Profile R 40/80 60°** Article No. PP1240



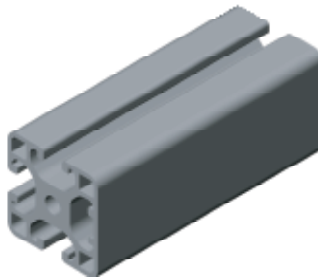
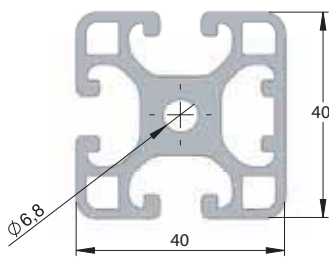
ix	22,64 cm <sup>4</sup>
ly	34,91 cm <sup>4</sup>
Wx	5,96 cm <sup>3</sup>
Wy	11,56 cm <sup>3</sup>
Profile area	10,5 cm <sup>2</sup>
Length max	6 m
Weight	2,84 kg/m

**Profile 40/80 90°** Article No. PP1250



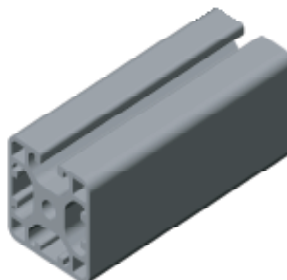
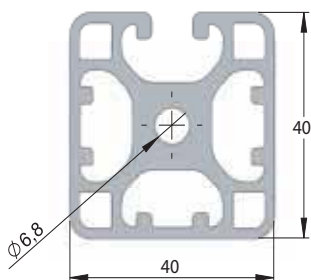
ix	76,19 cm <sup>4</sup>
ly	76,19 cm <sup>4</sup>
Wx	18,58 cm <sup>3</sup>
Wy	18,58 cm <sup>3</sup>
Profile area	14,91 cm <sup>2</sup>
Length max	6 m
Weight	4,05 kg/m

**Profile 40x40 3N Light** Article No. PP1300



ix	9,01 cm <sup>4</sup>
ly	9,54 cm <sup>4</sup>
Wx	4,5 cm <sup>3</sup>
Wy	4,66 cm <sup>3</sup>
Profile area	6,59 cm <sup>2</sup>
Length max	6 m
Weight	1,78 kg/m

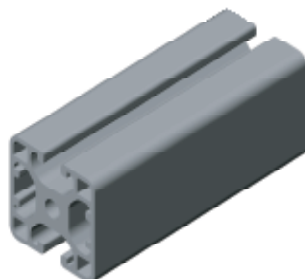
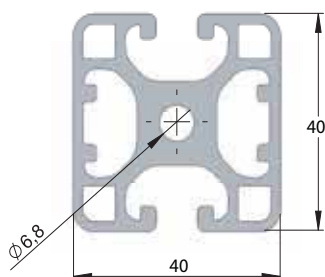
**Profile 40x40 1N Light** Article No. PP1302



ix	7,88 cm <sup>4</sup>
ly	9,02 cm <sup>4</sup>
Wx	3,94 cm <sup>3</sup>
Wy	4,51 cm <sup>3</sup>
Profile area	5,99 cm <sup>2</sup>
Length max	6 m
Weight	1,62 kg/m

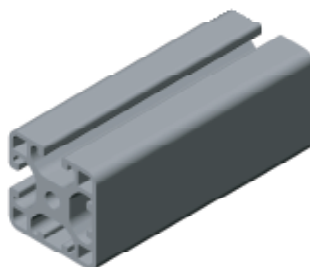
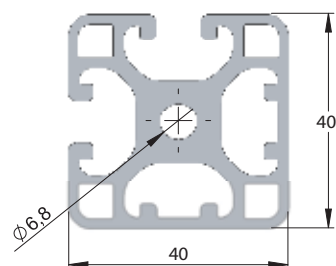
# Profile System 8

**Profile 40x40 2N 180° Light** Article No. PP1310



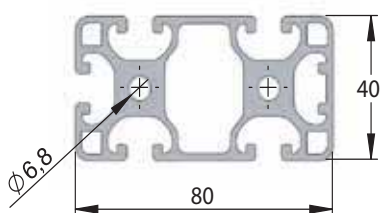
lx	7,88 cm <sup>4</sup>
ly	9,02 cm <sup>4</sup>
Wx	3,94 cm <sup>3</sup>
Wy	4,51 cm <sup>3</sup>
Profile area	5,99 cm <sup>2</sup>
Length max	6 m
Weight	1,62 kg/m

**Profile 40x40 2N 90° Light** Article No. PP1320



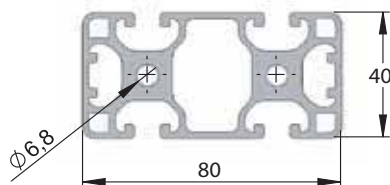
lx	9,63 cm <sup>4</sup>
ly	9,63 cm <sup>4</sup>
Wx	4,96 cm <sup>3</sup>
Wy	4,96 cm <sup>3</sup>
Profile area	6,79 cm <sup>2</sup>
Length max	6 m
Weight	1,83 kg/m

**Profile 40x80 5N Light** Article No. PP1330



lx	63,22 cm <sup>4</sup>
ly	14,09 cm <sup>4</sup>
Wx	15,57 cm <sup>3</sup>
Wy	7,05 cm <sup>3</sup>
Profile area	9,95 cm <sup>2</sup>
Length max	6 m
Weight	2,7 kg/m

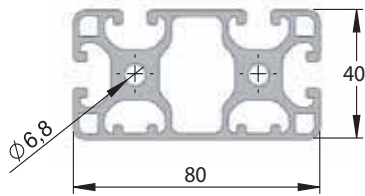
**Profile 40x80 4N 180° Light** Article No. PP1340



lx	65,74 cm <sup>4</sup>
ly	14,12 cm <sup>4</sup>
Wx	16,44 cm <sup>3</sup>
Wy	7,06 cm <sup>3</sup>
Profile area	10,12 cm <sup>2</sup>
Length max	6 m
Weight	2,74 kg/m

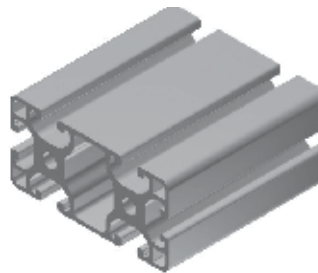
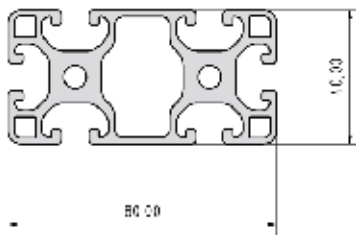
# Profile System 8

**Profile 40x80 4N 270° Light** Article No. PP1350



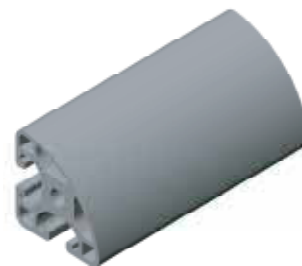
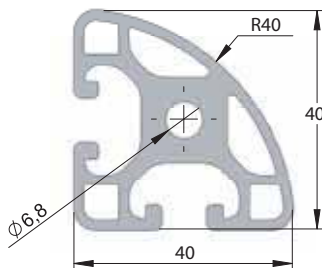
I <sub>x</sub>	62,12 cm <sup>4</sup>
I <sub>y</sub>	15,23 cm <sup>4</sup>
W <sub>x</sub>	15,53 cm <sup>3</sup>
W <sub>y</sub>	7,39 cm <sup>3</sup>
Profile area	10,12 cm <sup>2</sup>
Length max	6 m
Weight	2,74 kg/m

**Profile 40x80 3N 90° E** Article No. PP1365



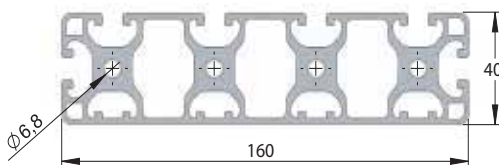
I <sub>x</sub>	15,32 cm <sup>4</sup>
I <sub>y</sub>	54,69 cm <sup>4</sup>
W <sub>x</sub>	7,51 cm <sup>3</sup>
W <sub>y</sub>	13,4 cm <sup>3</sup>
Profile area	8,24 cm <sup>2</sup>
Length max	6 m
Weight	2,22 kg/m

**Profile 40x40 R 90° Light** Article No. PP1370



I <sub>x</sub>	6,67 cm <sup>4</sup>
I <sub>y</sub>	6,67 cm <sup>4</sup>
W <sub>x</sub>	3,05 cm <sup>3</sup>
W <sub>y</sub>	3,05 cm <sup>3</sup>
Profile area	5,73 cm <sup>2</sup>
Length max	6 m
Weight	1,56 kg/m

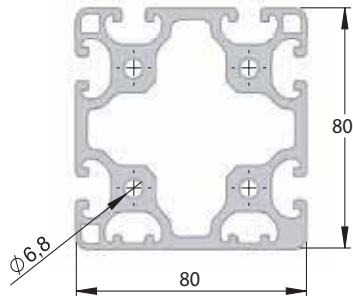
**Profile 40x160 6N Light** Article No. PP1380



I <sub>x</sub>	33,90 cm <sup>4</sup>
I <sub>y</sub>	512,66 cm <sup>4</sup>
W <sub>x</sub>	16,52 cm <sup>3</sup>
W <sub>y</sub>	64,08 cm <sup>3</sup>
Profile area	21,50 cm <sup>2</sup>
Length max	6 m
Weight	5,80 kg/m

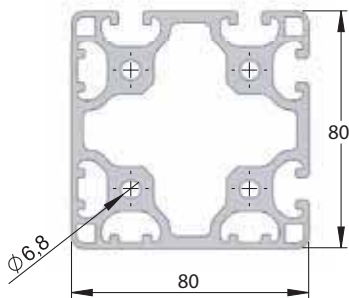
# Profile System 8

**Profile 80x80 6N Light** Article No. PP1901



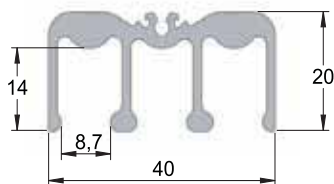
Ix	139 cm <sup>4</sup>
Iy	135 cm <sup>4</sup>
Wx	34,25 cm <sup>3</sup>
Wy	33,68 cm <sup>3</sup>
Profile area	20,08 cm <sup>2</sup>
Length max	6 m
Weight	5,42 kg/m

**Profile 80x80 4N90° L Light** Article No. PP1902



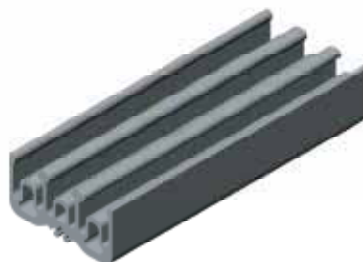
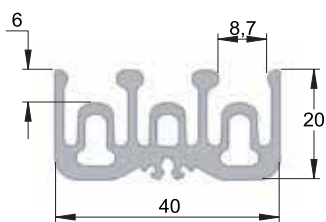
Ix	140 cm <sup>4</sup>
Iy	140 cm <sup>4</sup>
Wx	34,48 cm <sup>3</sup>
Wy	34,48 cm <sup>3</sup>
Profile area	20,39 cm <sup>2</sup>
Length max	6 m
Weight	5,5 kg/m

**Sliding door profile top** Article No. PP1510



Profile area	2,76 cm <sup>2</sup>
Length max	6 m
Weight	0,75 kg/m

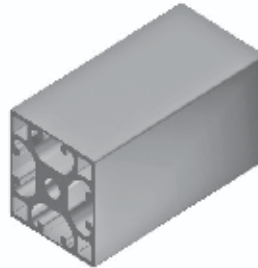
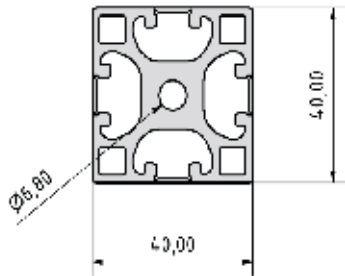
**Sliding door profile bottom** Article No. PP1520



Profile area	3,43 cm <sup>2</sup>
Length max	6 m
Weight	0,93 kg/m

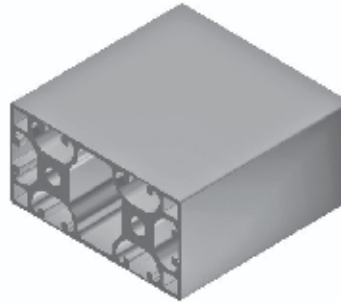
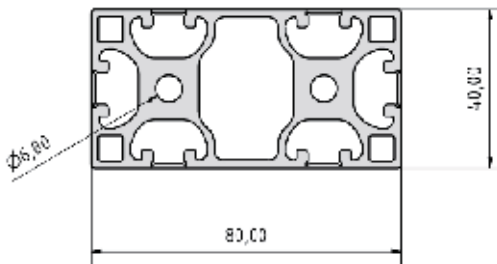
# Profile System 8

**Profile Z 40x40 ON Light** Article No. PP6100



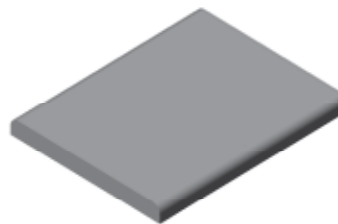
ix	10,03 cm <sup>4</sup>
ly	10,03 cm <sup>4</sup>
Wx	5,01 cm <sup>3</sup>
Wy	5,01 cm <sup>3</sup>
Profile area	6,90 cm <sup>2</sup>
Length max	6 m
Weight	1,86 kg/m

**Profile Z 40x80 ON Light** Article No. PP6110



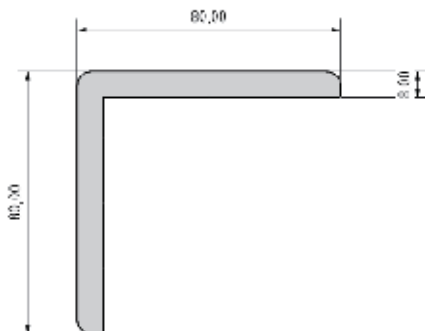
ix	18,30 cm <sup>4</sup>
ly	75,12 cm <sup>4</sup>
Wx	9,15 cm <sup>3</sup>
Wy	18,78 cm <sup>3</sup>
Profile area	11,89 cm <sup>2</sup>
Length max	6 m
Weight	3,21 kg/m

**Profile M 80x8 E** Article No. PP1540



ix	33,05 cm <sup>4</sup>
ly	0,33 cm <sup>4</sup>
Wx	8,26 cm <sup>3</sup>
Wy	0,81 cm <sup>3</sup>
Profile area	6,32 cm <sup>2</sup>
Length max	3 m
Weight	1,70 kg/m

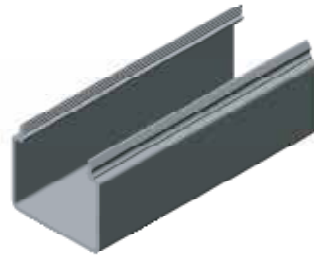
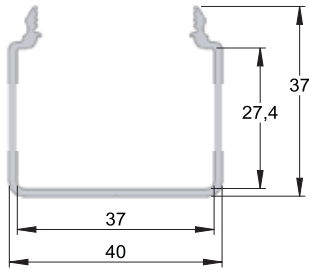
**Profile M 80x80x8 E** Article No. PP1545



ix	72,27 cm <sup>4</sup>
ly	72,27 cm <sup>4</sup>
Wx	12,66 cm <sup>3</sup>
Wy	12,66 cm <sup>3</sup>
Profile area	12,05 cm <sup>2</sup>
Length max	3 m
Weight	3,25 kg/m

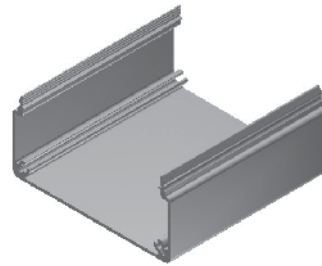
# Conduits

**Conduit profile U 40x40** Article No. PP5010



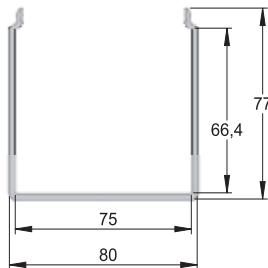
Profile area	2,28 cm <sup>2</sup>
Length max	6 m
Weight	0,62 kg/m

**Conduit profile U 40x80** Article No. PP5020



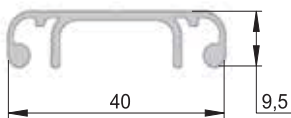
Profile area	2,87 cm <sup>2</sup>
Length max	6 m
Weight	0,78 kg/m

**Conduit profile U 80x80** Article No. PP5030



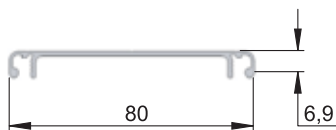
Profile area	6,14 cm <sup>2</sup>
Length max	6 m
Weight	1,66 kg/m

**Lid profile D 40** Article No. PP5040



Profile area	1,13 cm <sup>2</sup>
Length max	6 m
Weight	0,30 kg/m

**Lid profile D 80** Article No. PP5050



Profile area	2,37 cm <sup>2</sup>
Length max	6 m
Weight	0,64 kg/m

## Fastening Set Overview



Standard fastening set, page 26



Universal fastening set, page 27



Universal butt fastening set, page 28



Automatic fastening set, page 29



Automatic butt fastening set, page 30



Hinges, page 32-33



Fastening set, page 31



Angles, page 34-35

# Mounting Instructions

## Automatic fastening set

- The fastener is screwed from the end of the profile into the groove, wherein the thread is automatically cut.
- No additional machining of the profile is needed.
- This fastening system is slideable along the second profile.
- Automatic fastening sets should always be used in pairs.

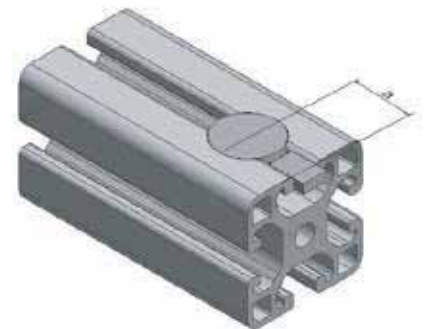
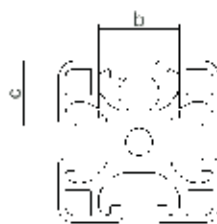


Clamping profile 8	a	t
8 40x40	2-8,5 mm	20 mm
8 40x40 180°	2-8,5 mm	15 mm

## Universal fastening set

- The fastener is anchored into the profile through a drilled hole.
- This fastening system is slideable along the second profile.
- Universal fastening sets should always be used in pairs.

	a	b	c
PR5	10 mm	12 mm	8,5 mm
PR6	15 mm	16 mm	12,7 mm
PR8	20 mm	20 mm	16 mm



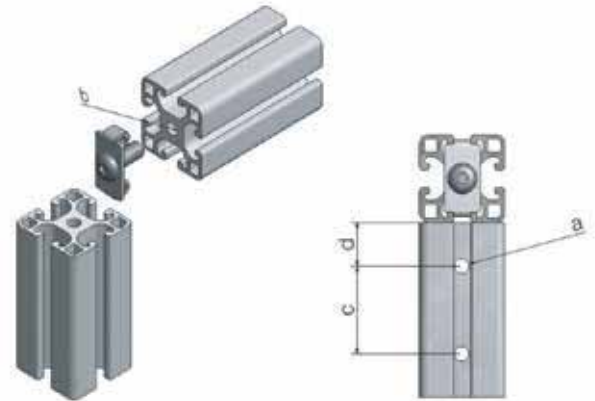


# Mounting Instructions

## Standard fastening set

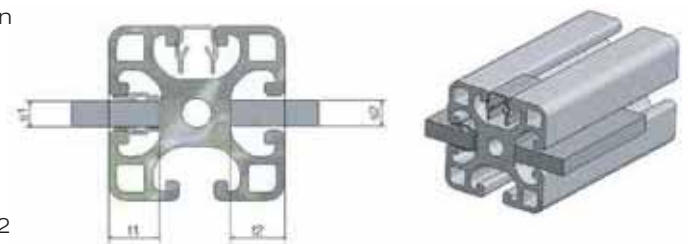
- This fastener is used as a stable and stationary attachment for right angle connection of profiles.
- High loading ability against displacement and torsion.

	a	b	c	d
PR5	Ø 4,3 mm	M5, 12 mm deep	20 mm	10 mm
PR6	Ø 5,5 mm	M6, 15 mm deep	30 mm	15 mm
PR8	Ø 7 mm	M8, 16 mm deep	40 mm	20 mm



## With or without cover or supporting profile

- Flexible plastic profile for two different uses:  
As cover to protect against pollution of the profile grooves and as support for surface elements to keep them safely in the wide profile grooves.



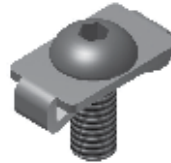
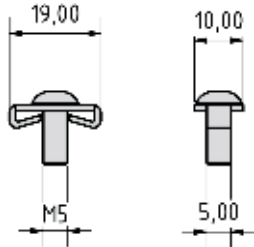
## Surfaces in the groove

	S1 with	t1 with	S2	t2
PR5	1,5-2 mm	5 mm	up to 4,5 mm	5,5 mm
PR6	2-3,5 mm	8 mm	up to 5,5 mm	9 mm
PR8	4-5,5 mm	10 mm	up to 7,5 mm	11,5 mm

# Standard Fastening Set

**Standard fastening set** Article No. PV4025

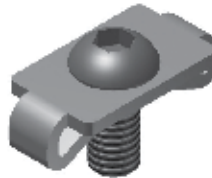
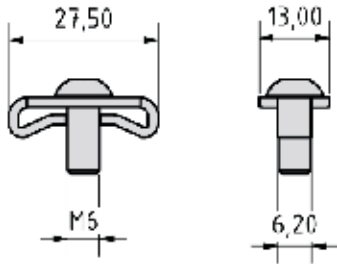
**Profile 5**



Material	Zinc coated steel
Weight	4 g
Torque	4,5 Nm

**Standard fastening set** Article No. PV3025

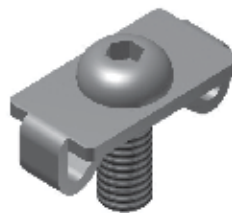
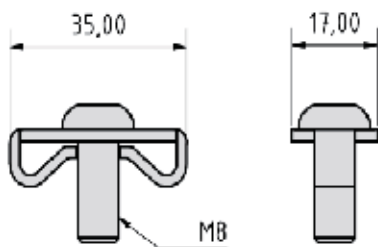
**Profile 6**



Material	Zinc coated steel
Weight	9 g
Torque	10 Nm

**Standard fastening set** Article No. PV1022

**Profile 8**

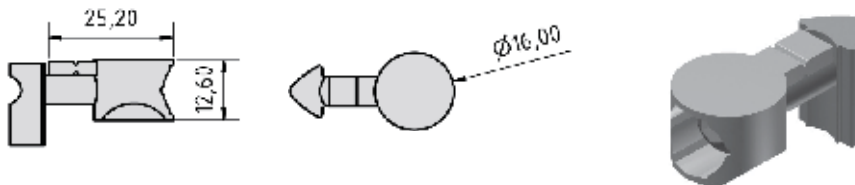


Material	Zinc coated steel
Weight	14 g
Torque	25 Nm

# Universal Fastening Set

Universal fastening set Article No. PV3015

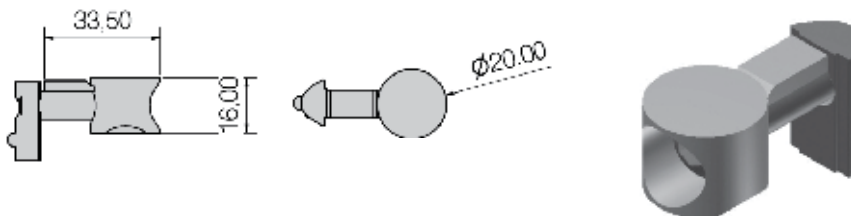
**Profile 6**



Material	Zinc coated steel
Weight	18 g
Torque	8 Nm

Universal fastening set Article No. PV1015

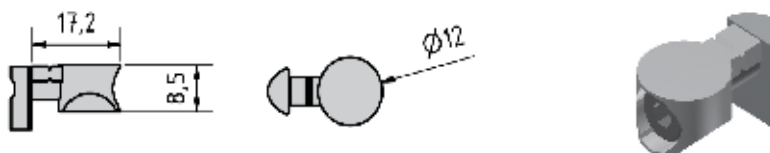
**Profile 8**



Material	Zinc coated steel
Weight	31 g
Torque	25 Nm

Universal fastening set Article No. PV4020

**Profile 5**

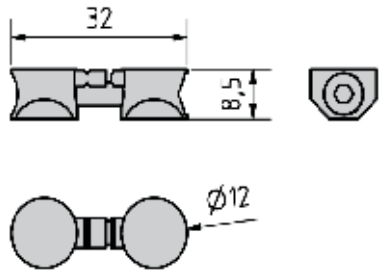


Material	Zinc coated steel
Weight	7 g
Torque	3 Nm

# Universal Butt Fastening Set

Universal butt fastening set Article No. PV4030

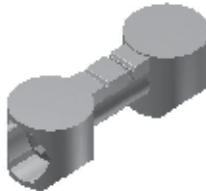
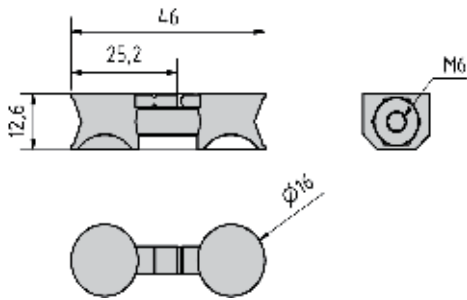
**Profile 5**



Material	Zinc coated steel
Weight	10 g
Torque	3 Nm

Universal butt fastening set Article No. PV3016

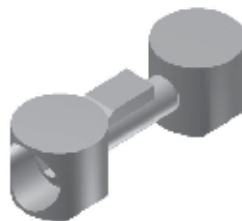
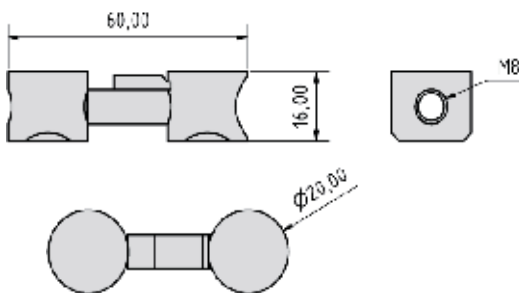
**Profile 6**



Material	Zinc coated steel
Weight	34 g
Torque	8 Nm

Universal butt fastening set Article No. PV1030

**Profile 8**

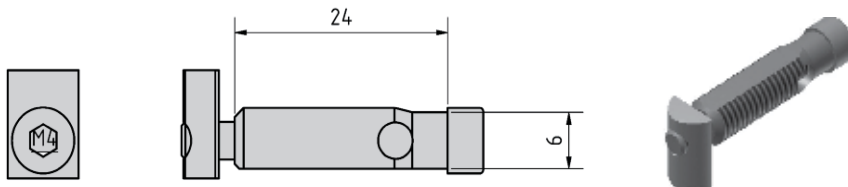


Material	Zinc coated steel
Weight	54 g
Torque	25 Nm

# Automatic Fastening Set

Automatic fastening set Article No. PV4035

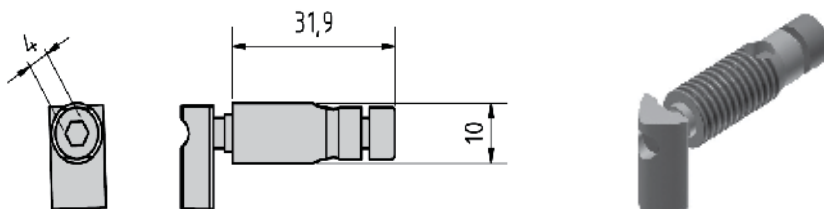
**Profile 5**



Material	Zinc coated steel
Weight	8 g
Torque	2,5 Nm

Automatic fastening set Article No. PV3045

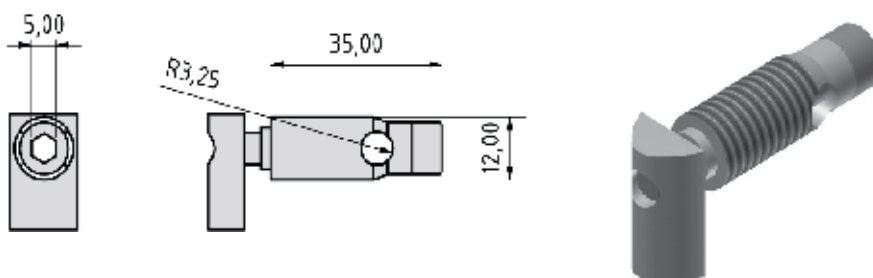
**Profile 6**



Material	Zinc coated steel
Weight	18 g
Torque	8 Nm

Automatic fastening set Article No. PV1102

**Profile 8**

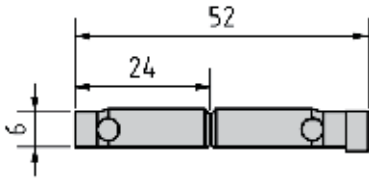


Material	Zinc coated steel
Weight	35 g
Torque	14 Nm

# Automatic Butt Fastening Set & Pin Element

Automatic butt fastening set Article No. PV4040

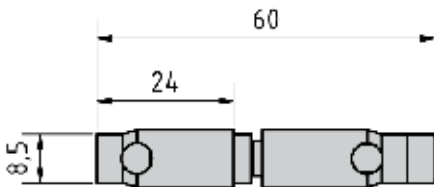
**Profile 5**



Material	Zinc coated steel
Weight	23 g
Screw	M5x45
Torque	2,5 Nm

Automatic butt fastening set Article No. PV3050

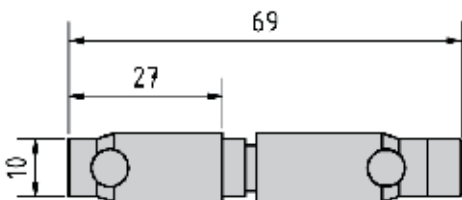
**Profile 6**



Material	Zinc coated steel
Weight	23 g
Screw	M5x45
Torque	8 Nm

Automatic butt fastening set Article No. PV1105

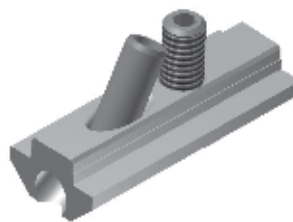
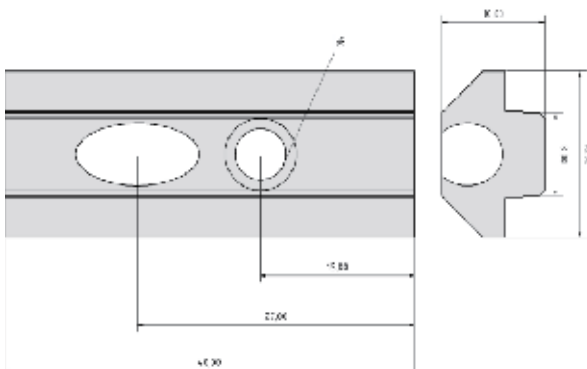
**Profile 8**



Material	Zinc coated steel
Weight	43 g
Screw	M6x50
Torque	14 Nm

Pin element Article No. PV1025

**Profile 8**

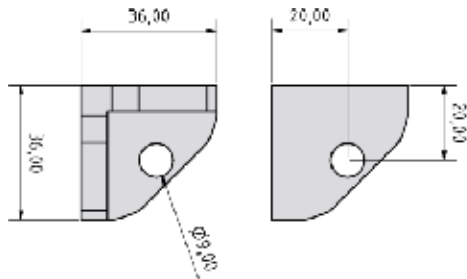


Material	Steel
Weight	35 g
Screw	M6x12

# Fastening Set

**Fastening set R40-90°** Article No. PV1060

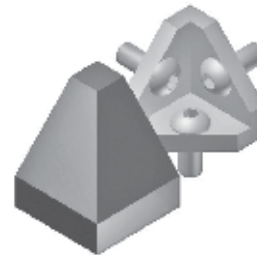
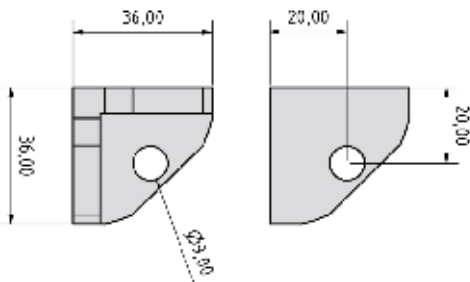
**Profile 8**



Material Zinc coated steel  
 Weight 120 g  
 Colour Black cap PA

**Fastening set 40x40 2x45°** Article No. PV1065

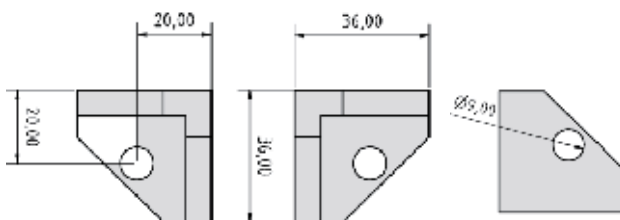
**Profile 8**



Material Zinc coated steel  
 Weight 128 g  
 Colour Black cap PA

**Fastening set 40x40-45°** Article No. PV1070

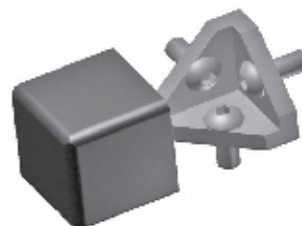
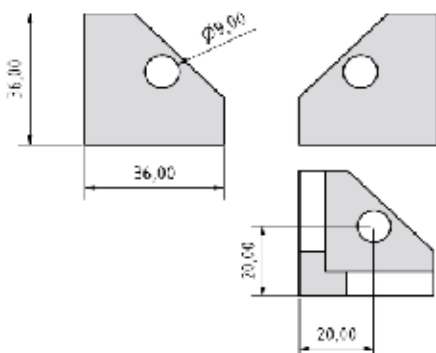
**Profile 8**



Material Zinc coated steel  
 Weight 128 g  
 Colour Black cap PA

**Fastening set 40x40x40** Article No. PV1075

**Profile 8**

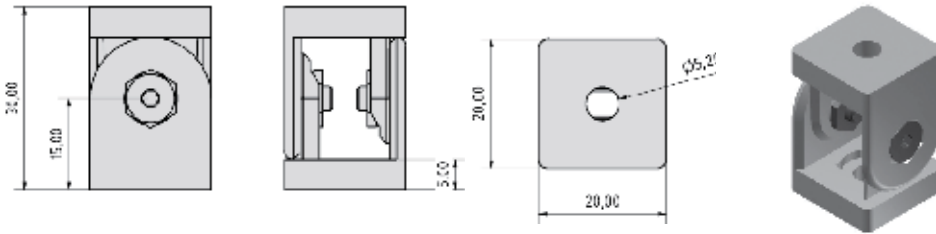


Material Zinc coated steel  
 Weight 133 g  
 Colour Black cap PA

# Hinges

**Hinge 20** Article No. PZ4160

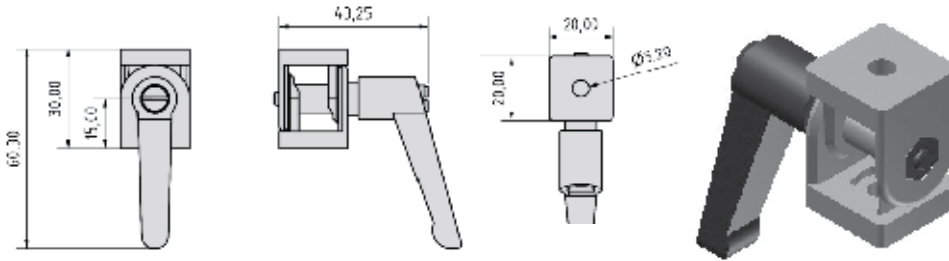
**Profile 5**



Weight 39 g

**Hinge 20 with clamp lever** Article No. PZ4161

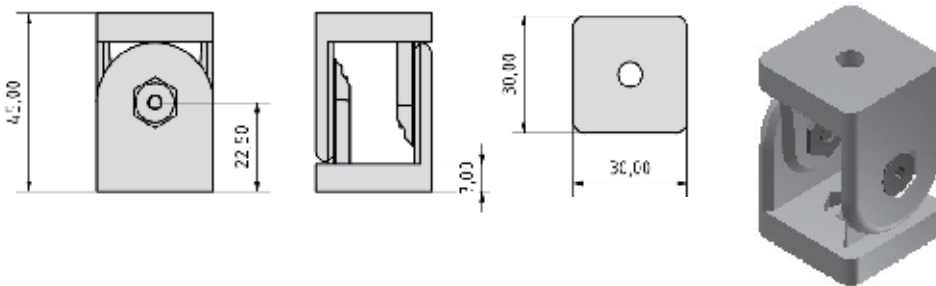
**Profile 5**



Weight 81 g

**Hinge 30** Article No. PZ3200

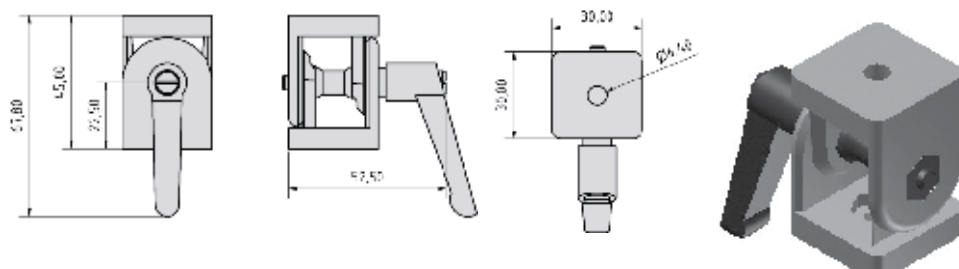
**Profile 6**



Weight 125 g

**Hinge 30 with clamp lever** Article No. PZ3205

**Profile 6**



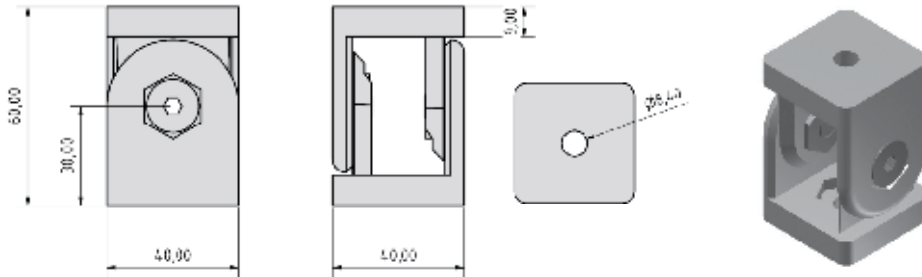
Weight 159 g



# Hinges

**Hinge 40** Article No. PZ1310

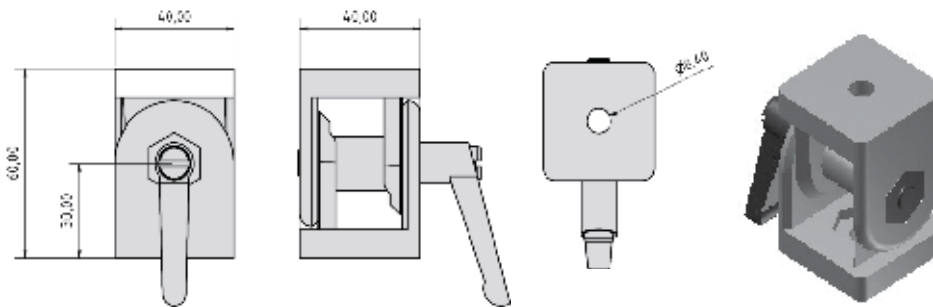
**Profile 8**



Weight 305 g

**Hinge 40 with clamp lever** Article No. PZ1315

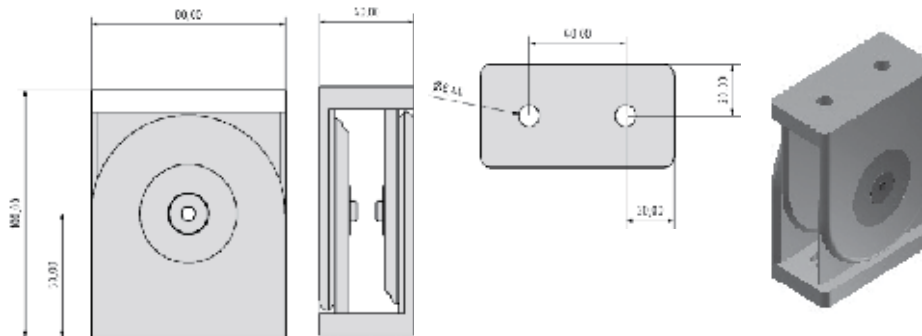
**Profile 8**



Weight 400 g

**Hinge 80** Article No. PZ1317

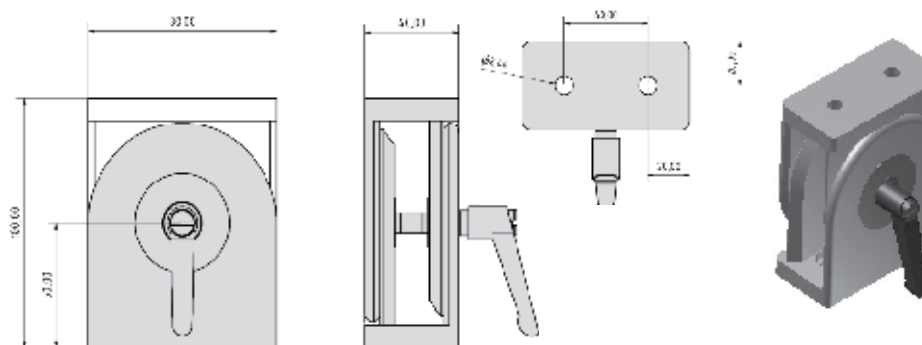
**Profile 8**



Weight 1049 g

**Hinge 80 with clamp lever** Article No. PZ1318

**Profile 8**

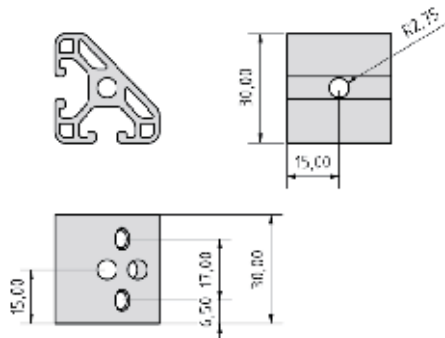


Weight 1140 g

# Angles

Angle set T1-30 Article No. PZ3210

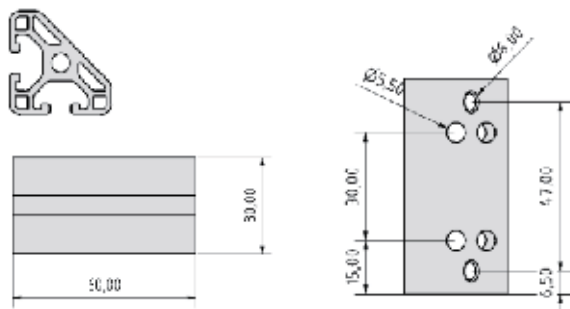
**Profile 6**



Material: Al  
 Colour: Black cap  
 Weight: 23 g

Angle set T1-60 Article No. PZ3215

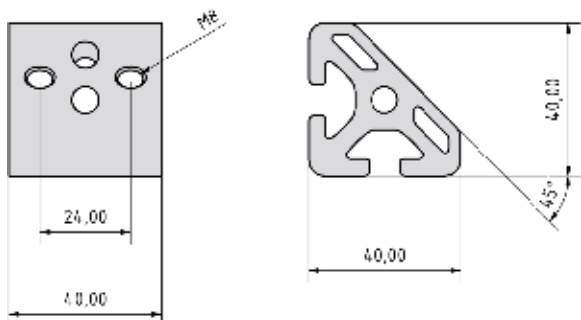
**Profile 6**



Material: Al  
 Colour: Black cap  
 Weight: 40 g

Angle set T1-40 Article No. PZ1345

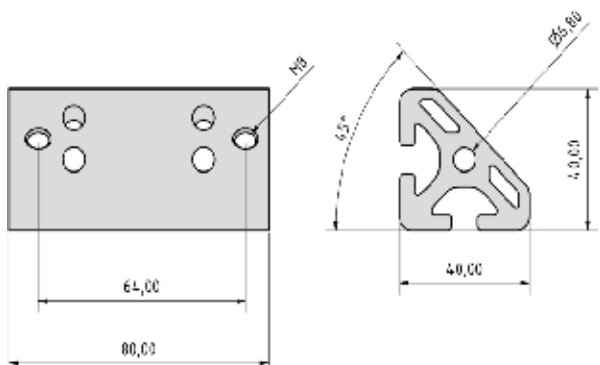
**Profile 8**



Material: Al  
 Colour: Black cap  
 Weight: 73 g

Angle set T1-80 Article No. PZ1350

**Profile 8**

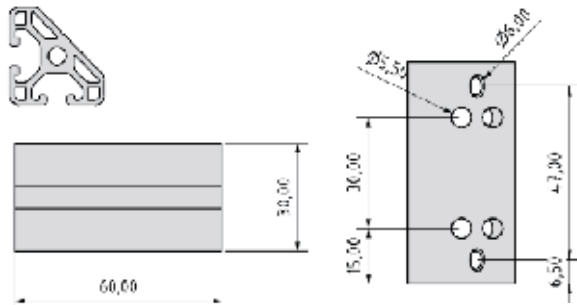


Material: Al  
 Colour: Black cap  
 Weight: 148 g

# Angles

**Angle set T2-30** Article No. PZ3220

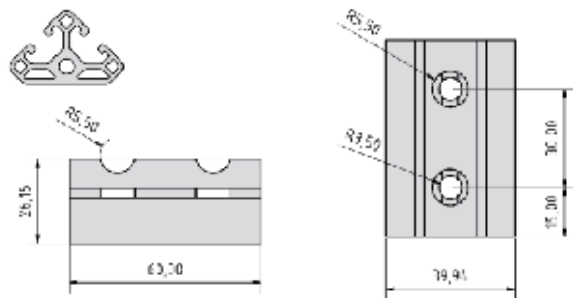
**Profile 6**



Material: Al  
 Colour: Black cap  
 Weight: 23 g

**Angle set T2-60** Article No. PZ3225

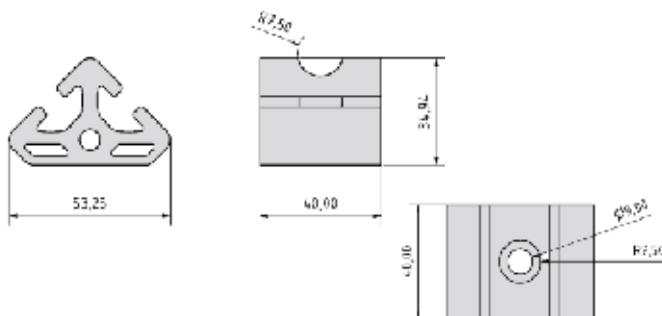
**Profile 6**



Material: Al  
 Colour: Black cap  
 Weight: 44 g

**Angle set T2-40** Article No. PZ1355

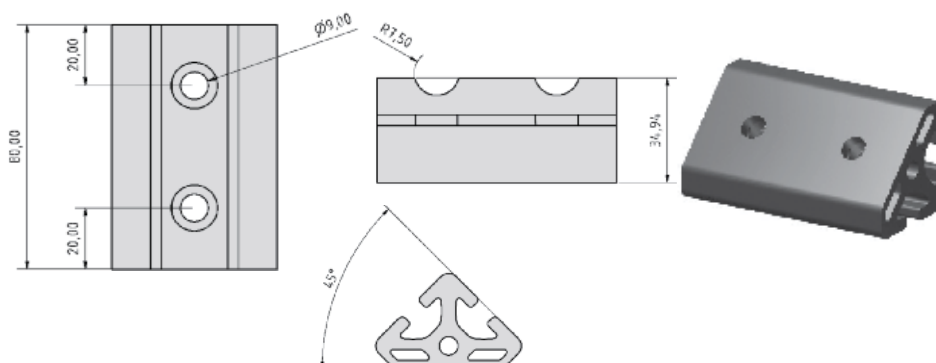
**Profile 8**



Material: Al  
 Colour: Black cap  
 Weight: 67 g

**Angle set T2-80** Article No. PZ1360

**Profile 8**



Material: Al  
 Colour: Black cap  
 Weight: 135 g

## T-slot Nut - Flexible



Article No.	Profile	Type	Material	Weight (g)
PN4025	5	M3	St, zinc coated	2
PN4030	5	M4	St, zinc coated	2
PN4035	5	M5	St, zinc coated	2
PN3010	6	M4	St, zinc coated	5
PN3015	6	M5	St, zinc coated	5
PN3020	6	M6	St, zinc coated	5
PN1030	8	M4	St, zinc coated	11
PN1035	8	M5	St, zinc coated	11
PN1040	8	M6	St, zinc coated	10
PN1045	8	M8	St, zinc coated	9

## T-slot Nut - Step



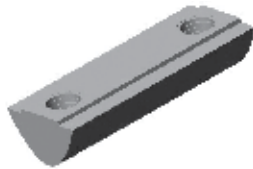
Article No.	Profile	Type	Material	Weight (g)
PN4010	5	M3 step	St, zinc coated	2
PN4015	5	M4 step	St, zinc coated	2
PN4020	5	M5 step	St, zinc coated	2
PN3055	6	M4 step	St, zinc coated	5
PN3060	6	M5 step	St, zinc coated	5
PN3065	6	M6 step	St, zinc coated	5
PN1005	8	M3 step	St, zinc coated	12
PN1010	8	M4 step	St, zinc coated	12
PN1015	8	M5 step	St, zinc coated	11
PN1020	8	M6 step	St, zinc coated	11
PN1025	8	M8 step	St, zinc coated	10

## T-slot Nut - Heavy



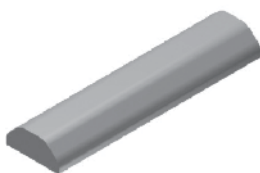
Article No.	Profile	Type	Material	Weight (g)
<i>PN1070</i>	8	M4 heavy step	St, zinc-coated	13
<i>PN1075</i>	8	M5 heavy step	St, zinc-coated	13
<i>PN1080</i>	8	M6 heavy step	St, zinc-coated	14
<i>PN1085</i>	8	M8 heavy step	St, zinc-coated	15
<i>PN1068</i>	8	M8 heavy	St, zinc-coated	11
<i>PN1069</i>	8	M8 heavy	St, zinc-coated	10

## T-slot Nut - Double Threaded



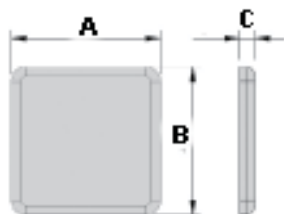
Article No.	Profile	Type	Material	Weight (g)
<i>PN3110</i>	6	2xM5-28	St, zinc-coated	14
<i>PN3115</i>	6	2xM6-28	St, zinc-coated	16
<i>PN3120</i>	6	2xM5-58	St, zinc-coated	19
<i>PN3125</i>	6	2xM6-58	St, zinc-coated	19
<i>PN1090</i>	8	2xM6-36	St, zinc-coated	16
<i>PN1095</i>	8	2xM6-76	St, zinc-coated	38
<i>PN1100</i>	8	2xM8-36	St, zinc-coated	16
<i>PN1105</i>	8	2xM8-76	St, zinc-coated	38
<i>PN1106</i>	8	2xM8-39,5	St, zinc-coated	15
<i>PN1107</i>	8	2xM8-79,5	St, zinc-coated	37

## T-slot Nut - Profile

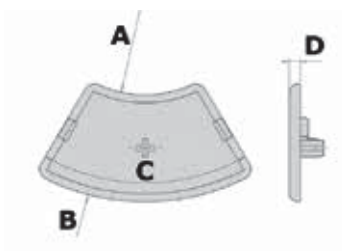


Article No.	Profile	Type	Material	Weight (g/m)
<i>PN4110</i>	5	1000	St, zinc-coated	280
<i>PN1130</i>	8	1000	St, zinc-coated	540
<i>PN4100</i>	5	1000 step	St, zinc-coated	280
<i>PN1135</i>	8	1000 step	Uncoated steel D45/A3	580
<i>PN1140</i>	8	1000 heavy	St, zinc-coated	820

## Caps



Article No.	Profile	A	B	C	Material	Weight (g)
PA4015	5	20	10	2,5	PA-GF	1
PA4020	5	40	10	2,5	PA-GF	1
PA4025	5	20	20	2,5	PA-GF	1
PA4030	5	40	20	2,5	PA-GF	2
PA4035	5	60	20	2,5	PA-GF	2
PA4040	5	80	20	2,5	PA-GF	3
PA4045	5	40	40	2,5	PA-GF	4
PA3005	6	30	12	3	PA-GF	5
PA3006	6	60	12	3	PA-GF	5
PA3010	6	30	30	3	PA-GF	3
PA3015	6	60	30	3	PA-GF	5
PA3020	6	120	30	3	PA-GF	7
PA3025	6	60	60	3	PA-GF	7
PA3030	6	120	60	3	PA-GF	7
PA1010	8	40	16	4	PA-GF	2
PA1015	8	80	16	4	PA-GF	5
PA1020	8	40	40	4	PA-GF	5
PA1025	8	80	40	4	PA-GF	8
PA1029	8	80	80	4	PA-GF	17
PA1032	8	120	40	4	PA-GF	27
PA1033	8	160	40	4	PA-GF	37
PA1035	8	120	80	4	PA-GF	21
PA1040	8	160	80	4	PA-GF	34



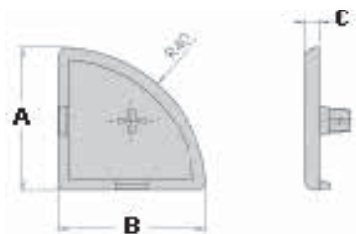
Article No.	Profile	A	B	C	D	Material	Weight (g)
PA1055	8	40	80	30°	4	PA-GF	4
PA1060	8	40	80	45°	4	PA-GF	6
PA1065	8	40	80	60°	4	PA-GF	7
PA1070	8	40	80	90°	4	PA-GF	11

Standard colour black

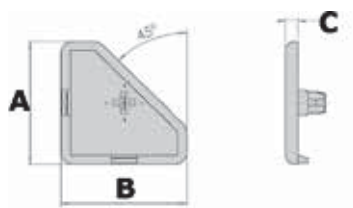
# Caps



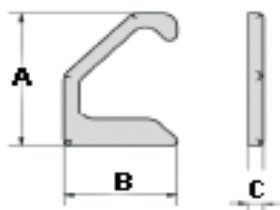
Article No.	Profile	A	B	C	Material	Color	Weight (g)
<i>PA4060</i>	5	5	4,3	8	PA-GF	Black	2
<i>PA4065</i>	5	5	4,3	8	PA-GF	Grey	2
<i>PA3050</i>	6	6	5,5	10	PA-GF	Black	3
<i>PA3055</i>	6	6	5,5	10	PA-GF	Grey	3
<i>PA1110</i>	8	6,25	7	13	PA-GF	Black	5
<i>PA1115</i>	8	6,25	7	13	PA-GF	Grey	5



Article No.	Profile	A	B	C	Material	Weight (g)
<i>PA4050</i>	5	20	20	2,5	PA-GF	1
<i>PA3060</i>	6	30	30	3	PA-GF	5
<i>PA1075</i>	8	40	40	4	PA-GF	3



Article No.	Profile	A	B	C	Material	Weight (g)
<i>PA3035</i>	6	30	30	3	PA-GF	7
<i>PA1050</i>	8	40	40	4	PA-GF	4



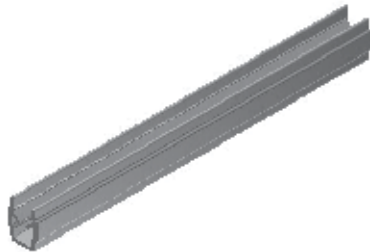
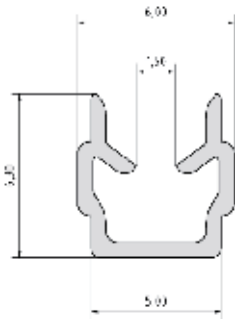
Article No.	Profile	A	B	C	Material	Weight (g)
<i>PA1055</i>	8	40	30	4	PA-GF	8

Standard colour black

# Cover Profile & Fastening Profile for Panels

**Cover Profile** Article No. PZ4070

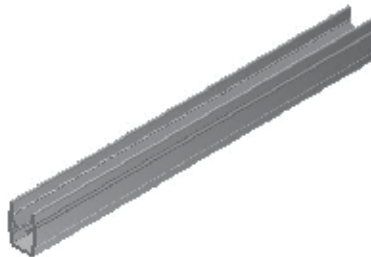
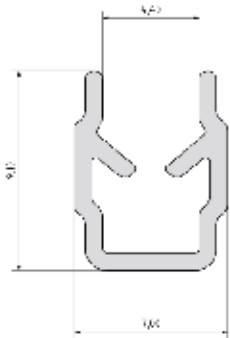
**Profile 5**



Material	PP
Colour	Black (PZ4070) Natural (PZ4065)
Weight	26 g/pcs
Panel	1-3 mm
Length	2 m

**Cover Profile** Article No. PZ3075, PZ3076

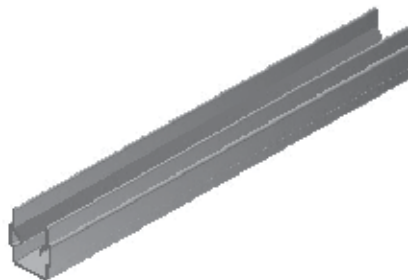
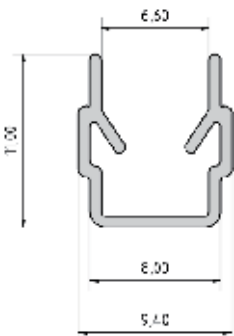
**Profile 6**



Material	PP
Colour	Black (PZ3075) Natural (PZ3076)
Weight	42 g/pcs
Panel	2-3,5 mm
Length	2 m

**Cover Profile** Article No. PZ1275, PZ1276, PZ1277, PZ1278, PZ1279, PZ1280

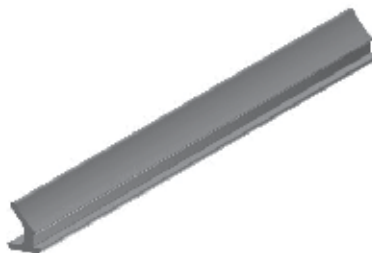
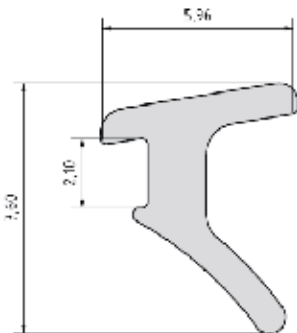
**Profile 8**



Material	PP
Colour	Natural (PZ1275) Yellow (PZ1276) Blue (PZ1277) Red (PZ1278) Grey (PZ1279) Black (PZ1280)
Weight	52 g/pcs
Panel	4-6 mm
Length	2 m

**Sealing Strip** Article No. PZ4150

**Profile 5**



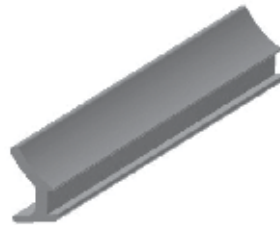
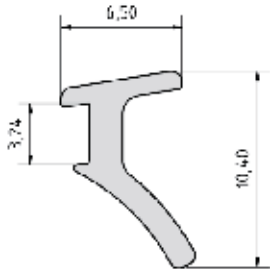
Material	TPE
Colour	Black
Weight	13 g/pcs
Panel	2-3 mm
Length	2 m



# Cover Profile & Fastening Profile for Panels

**Sealing Strip** Article No. PZ3240

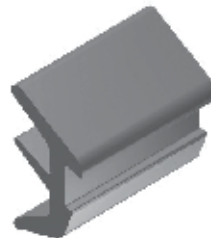
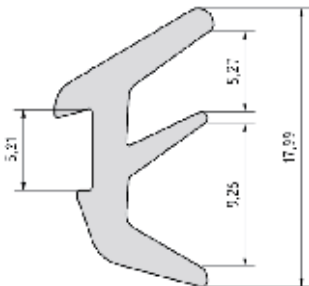
**Profile 6**



Material	TPE
Colour	Black
Weight	20 g/pcs
Panel	2-4 m

**Sealing Strip** Article No. PZ1320

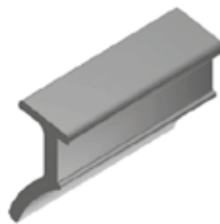
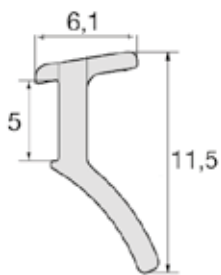
**Profile 8**



Material	TPE
Colour	Black
Weight	75 g/pcs
Panel	2-4 m

**Sealing Strip** Article No. PZ1325

**Profile 8**

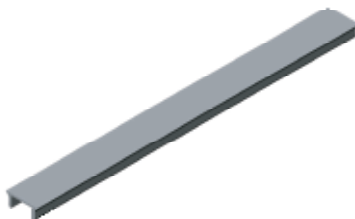
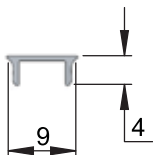


Material	TPE
Colour	Black
Weight	30 g/pcs
Panel	4-6 m

# Cover Profile & Fastening Profile for Panels

**Cover Profile AL** Article No. PP1110

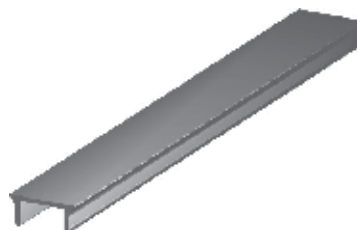
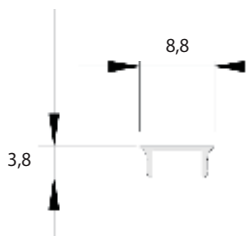
**Profile 8**



Profile area	0,1 cm <sup>2</sup>
Weight	26 g/m

**Cover Profile** Article No. PZ1270

**Profile 8**

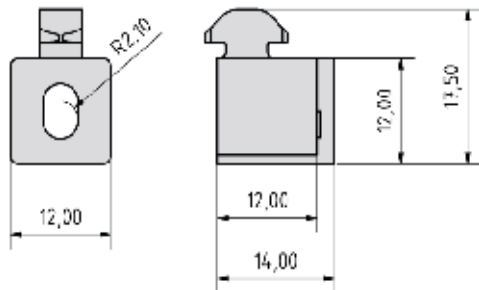


Material	SB/PVC
Colour	Black
Weight	23 g/pcs
Panel	mm
Length	2 m

# Multiblock

**Uni block** Article No. PZ4090

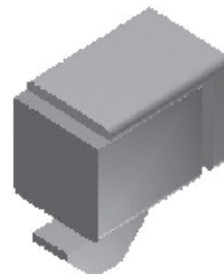
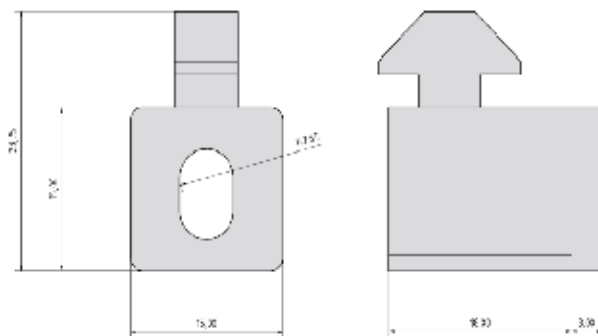
**Profile 5**



Material	PA-GF
Colour	Black
Weight	3 g

**Uni block** Article No. PZ3145

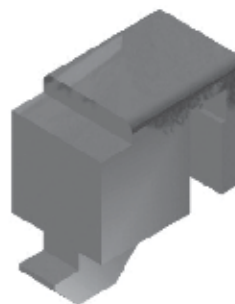
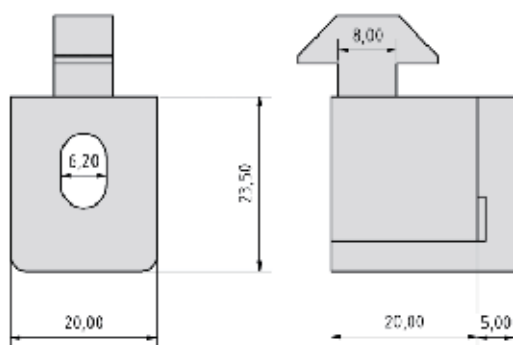
**Profile 6**



Material	PA-GF
Colour	Black
Weight	11 g

**Uni block** Article No. PZ1140

**Profile 8**

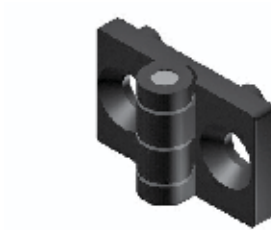
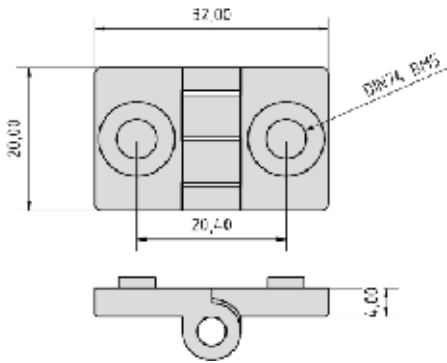


Material	PA-GF
Colour	Black
Weight	14 g

# Hinges

**Hinge PA** Article No. PZ4080

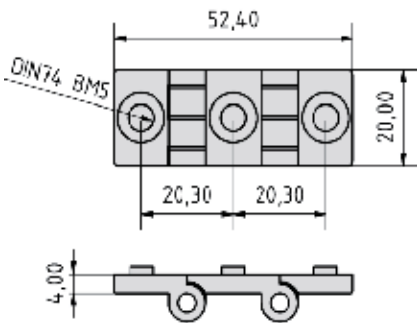
**Profile 5**



Material PA-GF  
 Colour Black  
 Weight 6 g

**Hinge Double PA** Article No. PZ4085

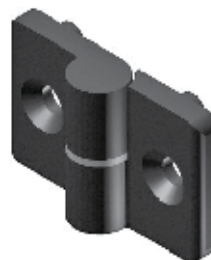
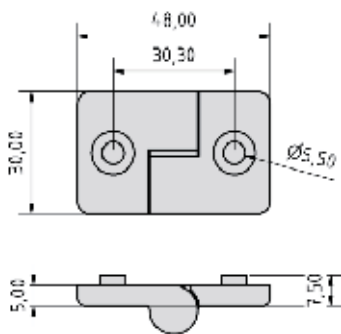
**Profile 5**



Material PA-GF  
 Colour Black  
 Weight 10 g

**Hinge PA Right** Article No. PZ3100

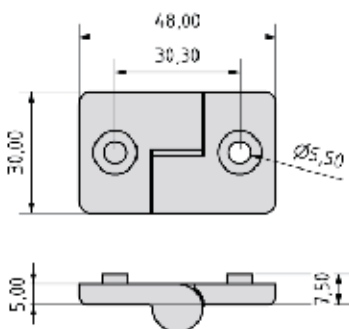
**Profile 6**



Material PA-GF  
 Colour Black  
 Weight 14 g

**Hinge PA Left** Article No. PZ3105

**Profile 6**

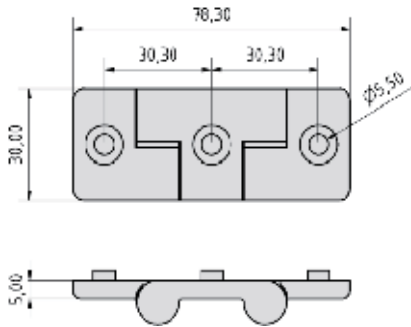


Material PA-GF  
 Colour Black  
 Weight 14 g

# Hinges

**Hinge Double** Article No. PZ3110

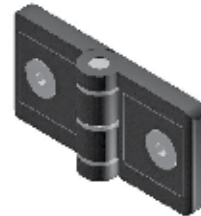
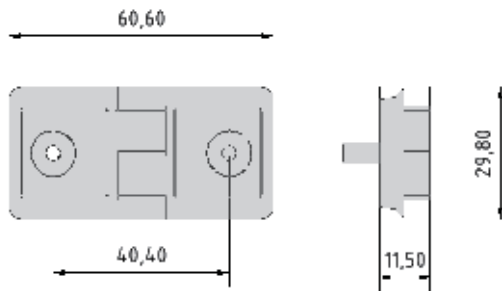
**Profile 6**



Material	PA-GF
Colour	Black
Weight	25 g

**Hinge 30 ZN 6/8** Article No. PZ3107

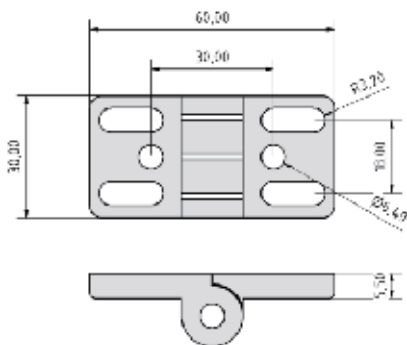
**Profile 6**



Material	ZN
Colour	Black
Weight	62 g

**Hinge 30 ZN** Article No. PZ3230

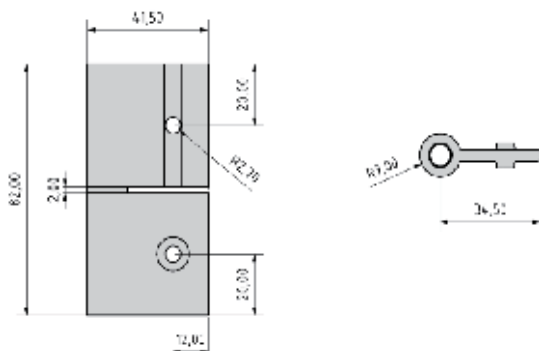
**Profile 6**



Material	ZN
Colour	Black
Weight	69 g

**Hinge Alu PP4 Light** Article No. PZ3108

**Profile 6**

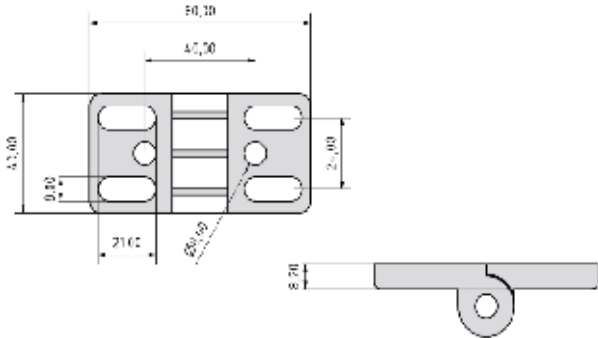


Material	Al
Colour	Natural
Weight	86 g

# Hinges

**Hinge 40 ZN** Article No. PZ1560

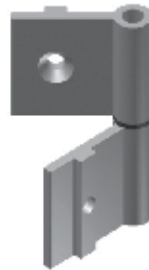
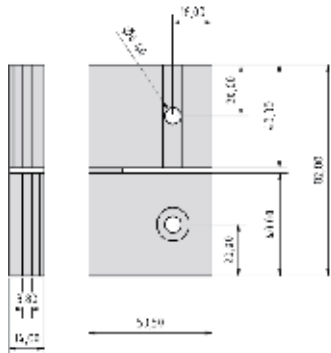
**Profile 8**



Material: ZN  
 Colour: Black  
 Weight: 180 g

**Hinge Alu PP4 Light** Article No. PZ1561

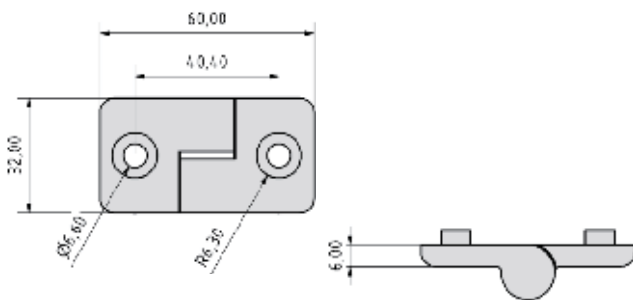
**Profile 8**



Material: Al  
 Colour: Natural  
 Weight: 113 g

**Hinge PA Right** Article No. PZ1540

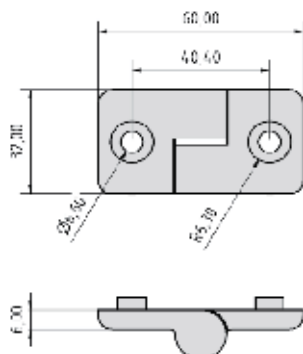
**Profile 8**



Material: PA-GF  
 Colour: Black  
 Weight: 21 g

**Hinge PA Left** Article No. PZ1545

**Profile 8**

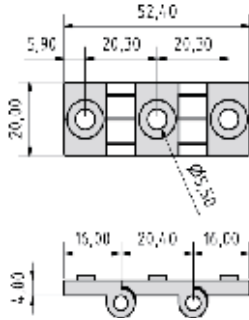


Material: PA-GF  
 Colour: Black  
 Weight: 21 g

# Hinges

**Hinge double** Article No. PZ1550

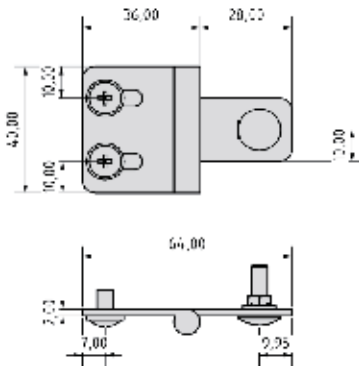
**Profile 8**



Material	PA-GF
Colour	Black
Weight	21 g

**Hinge ST** Article No. PZ1555

**Profile 8**

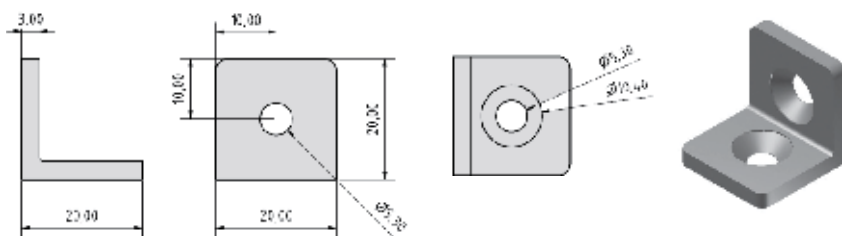


Material	ST
Colour	Black
Weight	52 g

# Brackets & Angle Brackets

**Angle bracket 20 ST** Article No. PZ4045

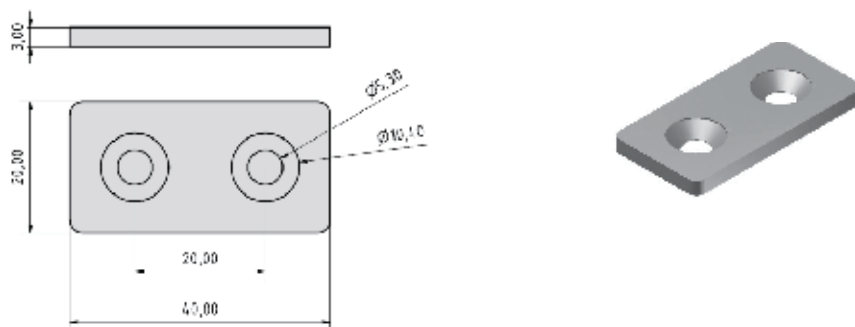
**Profile 5**



Material ST  
 Colour Black  
 Weight 24 g

**Bracket 20 ST** Article No. PZ4050

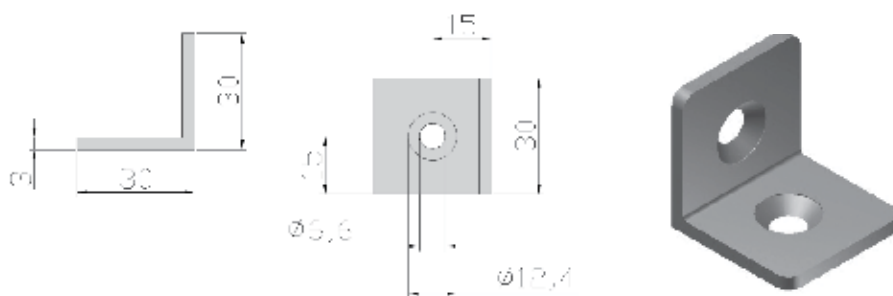
**Profile 5**



Material ST  
 Colour Black  
 Weight 25 g

**Angle bracket 30 ST** Article No. PZ3050

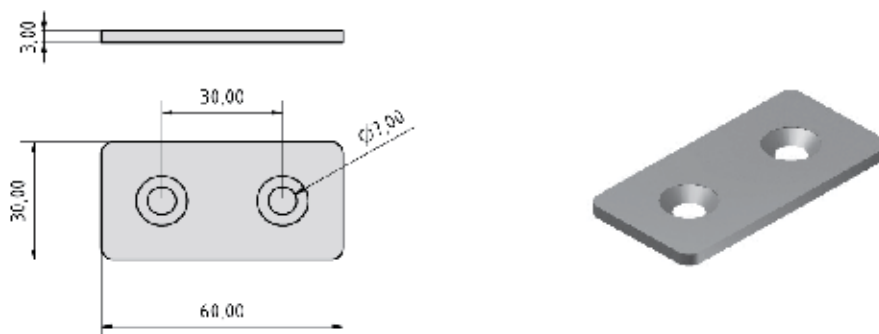
**Profile 6**



Material ST  
 Colour Black  
 Weight 37 g

**Bracket 30 ST** Article No. PZ3055

**Profile 6**



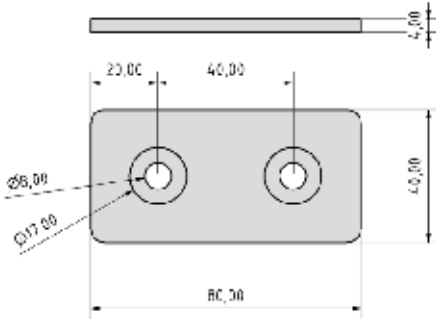
Material ST  
 Colour Black  
 Weight 38 g



# Brackets, Angle Brackets & Angle Set

**Bracket 40 ST** Article No. PZ1120

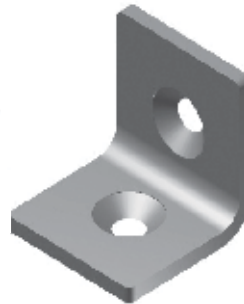
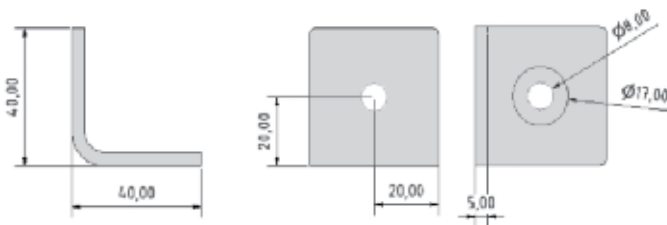
**Profile 8**



Material	ST
Colour	Black
Weight	115 g

**Angle bracket 40 ST** Article No. PZ1125

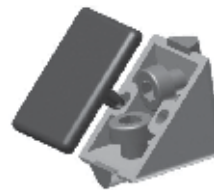
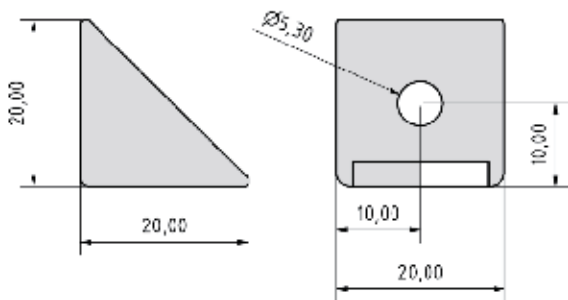
**Profile 8**



Material	ST
Colour	Black
Weight	115 g

**Angle set 20x20 ZN** Article No. PZ4040

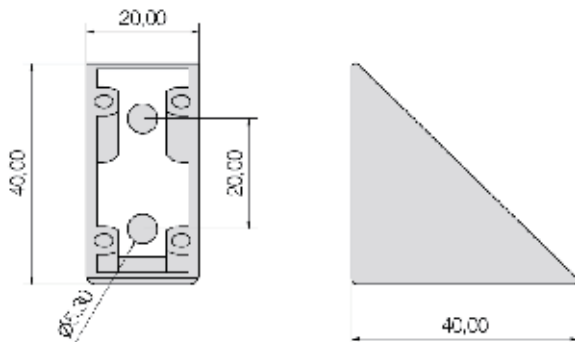
**Profile 5**



Material	ZN
Colour	Black cap PA
Weight	23 g

**Angle set 40x40 ZN** Article No. PZ4055

**Profile 5**

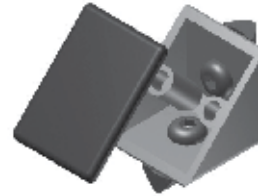
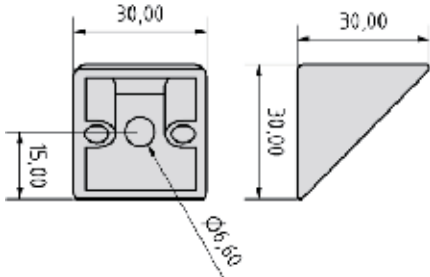


Material	ZN
Colour	Black cap PA
Weight	58 g

# Angle Set

Angle set 30x30 ZN Article No. PZ3070

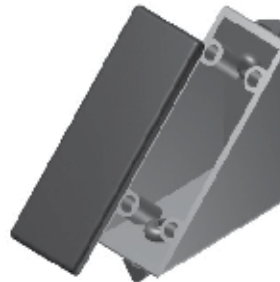
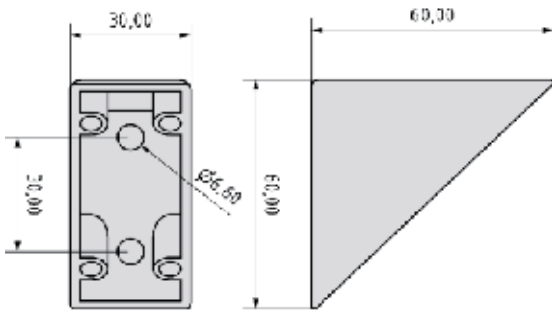
**Profile 6**



Material ZN  
 Colour Black cap PA  
 Weight 52 g

Angle set 60x60 ZN Article No. PZ3074

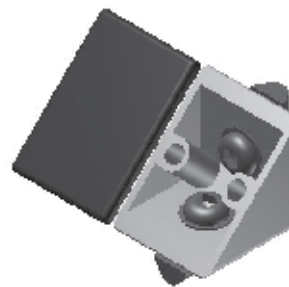
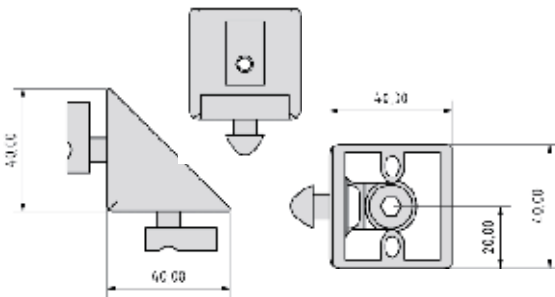
**Profile 6**



Material ZN  
 Colour Black cap PA  
 Weight 166 g

Angle set 40x40 ZN Article No. PZ1100

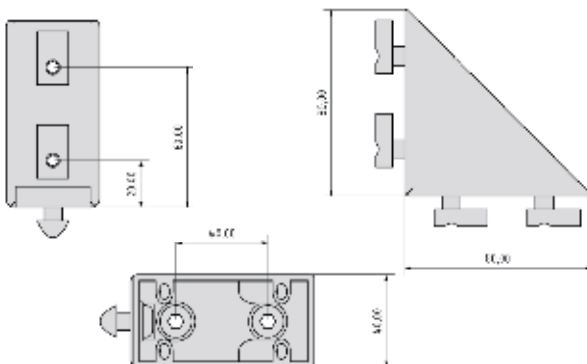
**Profile 8**



Material ZN  
 Colour Black cap PA  
 Weight 127 g

Angle set 80x80 ZN Article No. PZ1115

**Profile 8**

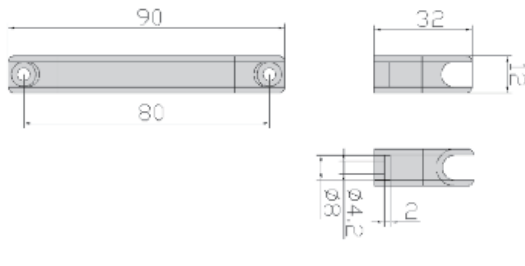


Material ZN  
 Colour Black cap PA  
 Weight 27 g

# Handles, Polyamide

**Angle 40x40 ZN** Article No. PZ4075

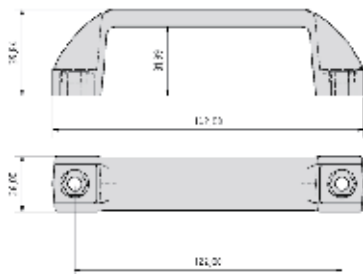
**Profile 5**



Material	PA-GF
Colour	Black
Weight	9 g

**Handle 120 E PA** Article No. PZ1565

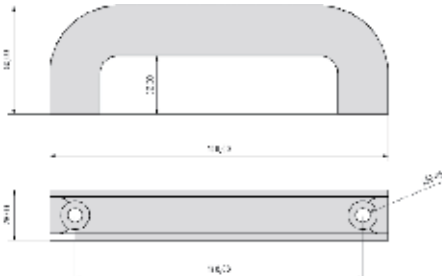
**Profile 8**



Material	PA-GF
Colour	Black
Weight	122 g

**Handle 160 PA** Article No. PZ1570, PZ1571, PZ1572, PZ1573

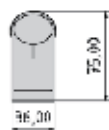
**Profile 8**



Material	PA-GF
Colour	Black (PZ1570) Blue (PZ1571) Yellow (PZ1572) Red (PZ1573)
Weight	93 g

**Handle PA** Article No. PZ1576

**Profile 8**



Material	PA, glass fiber reinforced
Colour	Black/Grey
Weight	69,8 g

**Cover for handle PA** Article No. PZ1577

**Profile 8**

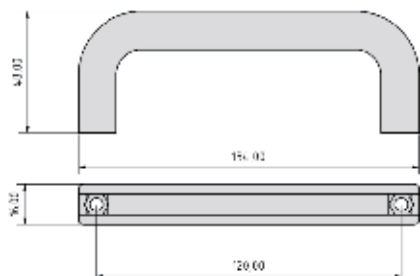


Material	PA-GD
Colour	Black
Weight	5 g

# Handles, Polyamide

**Handle 120 PA** Article No. PZ1580

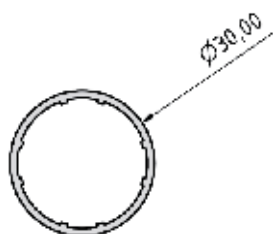
**Profile 8**



Material	PA-GF
Colour	Black
Weight	30 g

**Tube AL 500 for handle PA** Article No. PZ1582

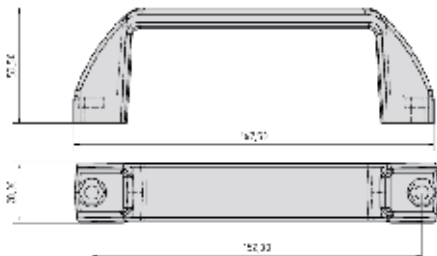
**Profile 8**



Material	AL
Weight	91 g
Length	500 mm

**Handle 160 E PA** Article No. PZ1585

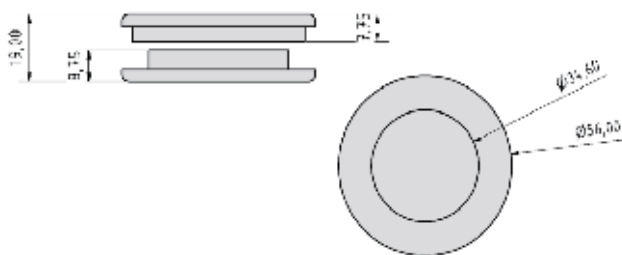
**Profile 8**



Material	PA-GF
Colour	Black
Weight	125 g

**Handle D50** Article No. PZ1907

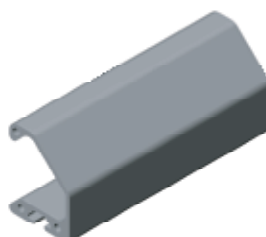
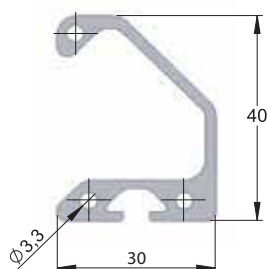
**Profile 8**



Material	ZN
Colour	Black
Weight	27 g

**Grip rail profile** Article No. PP1440

**Profile 8**

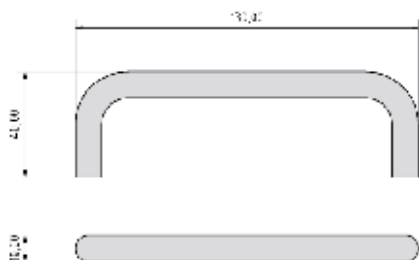


Profile area	2,80 cm <sup>2</sup>
Weight	0,76 kg/m
Length max	3 m

# Handles, Aluminium

**Handle 120** Article No. PZ1590

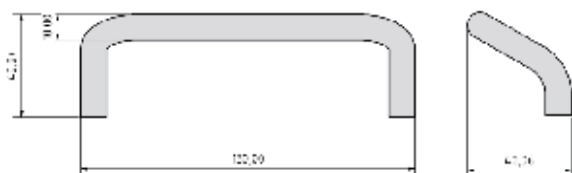
**Profile 8**



Material	AL
Colour	Black
Weight	37 g

**Handle 120 bended** Article No. PZ1595

**Profile 8**



Material	GD-AL
Colour	Black
Weight	9 g

**Fastening set handle** Article No. PZ1600

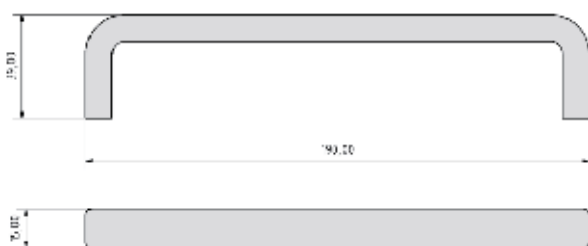
**Profile 8**



Material	Steel
Colour	Black
Weight	21 g

**Handle 180 Alu Light** Article No. PZ1605

**Profile 8**

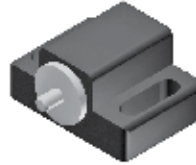
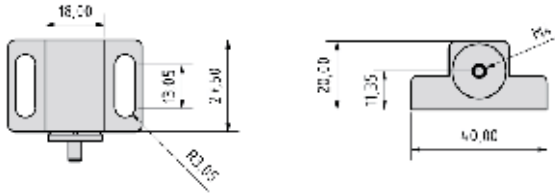


Material	AL
Colour	Anodized
Weight	87 g

# Locking Systems

**Ball latch** Article No. PZ1610

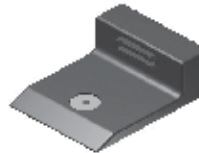
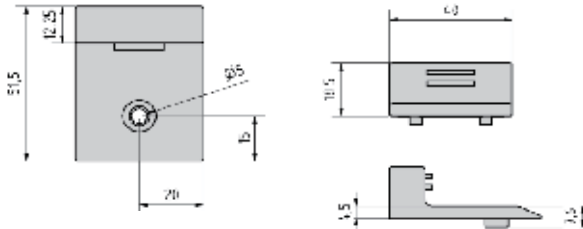
**Profile 8**



Material PA-GF  
 Colour Black  
 Weight 39 g

**Magnet stop** Article No. PZ2015

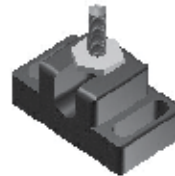
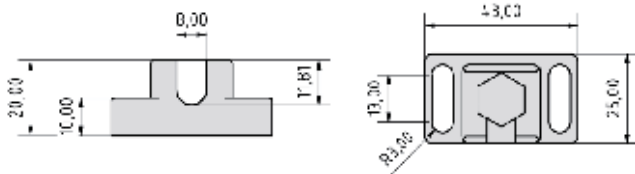
**Profile 8**



Material PA-GF  
 Colour Black  
 Weight 40 g

**Ball latch** Article No. PZ1615

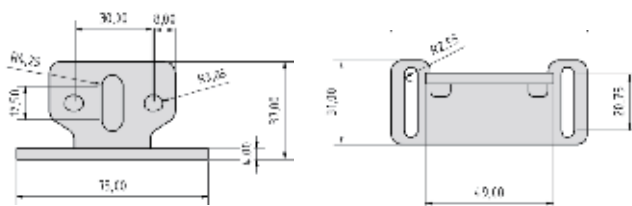
**Profile 8**



Material PA-GF  
 Colour Black  
 Weight 45 g

**Ball latch mounting angle** Article No. PZ1616

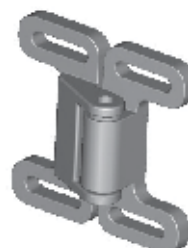
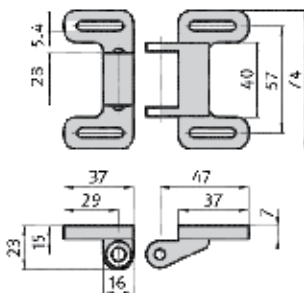
**Profile 8**



Material ST  
 Colour Black  
 Weight 88 g

**Ball latch double** Article No. PZ1618

**Profile 8**

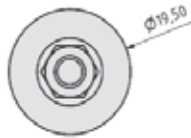
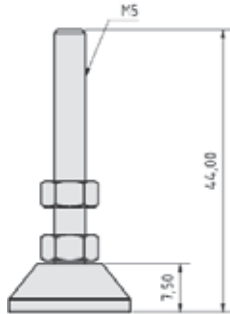


Material PA-GF  
 Colour Black  
 Weight 38 g

# Knuckle Foot

**Knuckle foot PA D20 M5x45** Article No. PZ4180

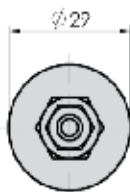
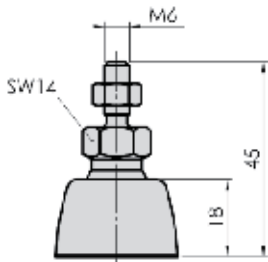
**Profile 5**



Material	PA-ST
Colour	Black
Weight	7 g

**Knuckle foot PA D30 M6x45** Article No. PZ1365

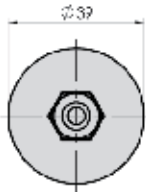
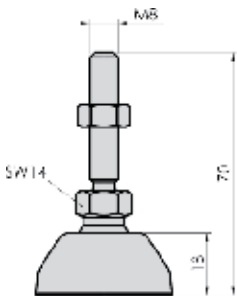
**Profile 8**



Material	PA-ST
Colour	Black
Weight	17 g

**Knuckle foot PA D40 M8x70** Article No. PZ1375

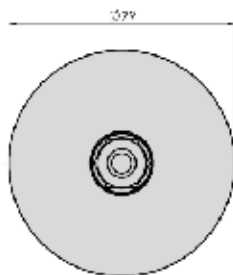
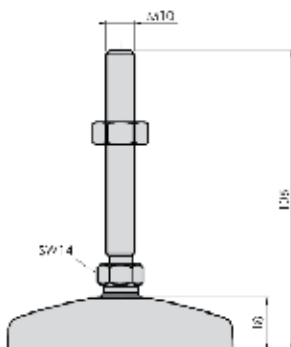
**Profile 8**



Material	PA-ST
Colour	Black
Weight	49 g

**Knuckle foot ZN D80 M10x105** Article No. PZ1390

**Profile 8**

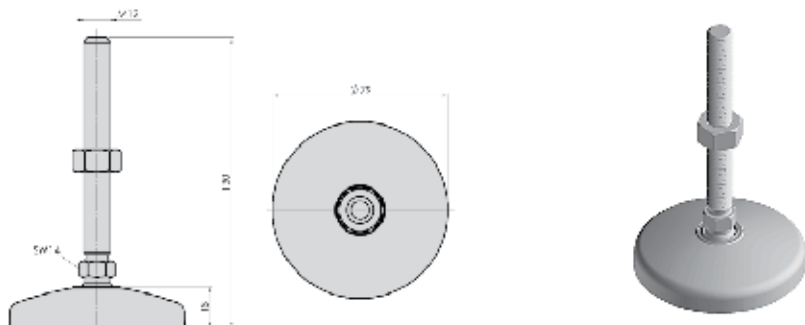


Material	ST
Colour	Black
Weight	307 g

# Knuckle & L-based Foot

**Knuckle foot ZN D80 M12x130** Article No. PZ1400

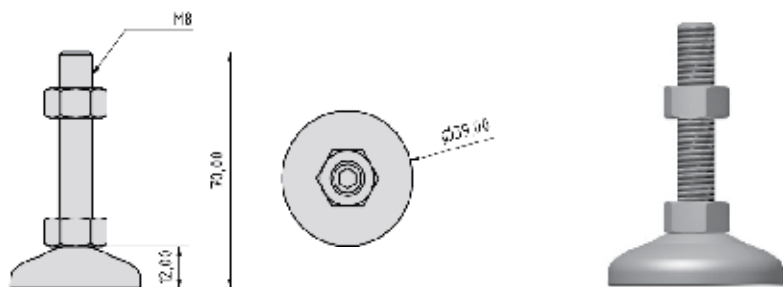
**Profile 8**



Material ZN  
 Colour Black  
 Weight 346 g

**Knuckle foot Z stainless D40 M8x70** Article No. PZ6120

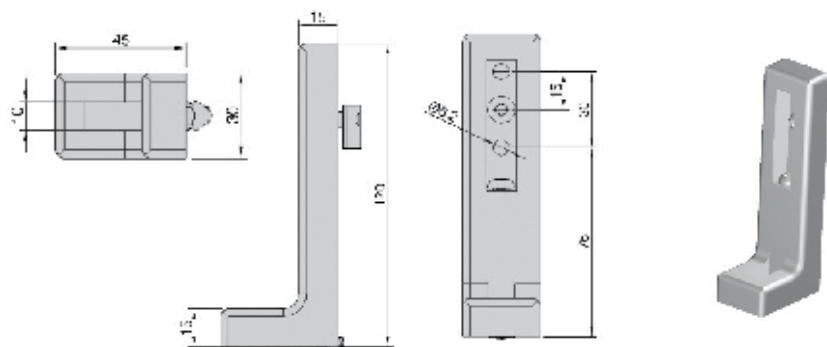
**Profile 8**



Material ST  
 Weight 127 g

**L-based foot adjustable** Article No. PZ3081

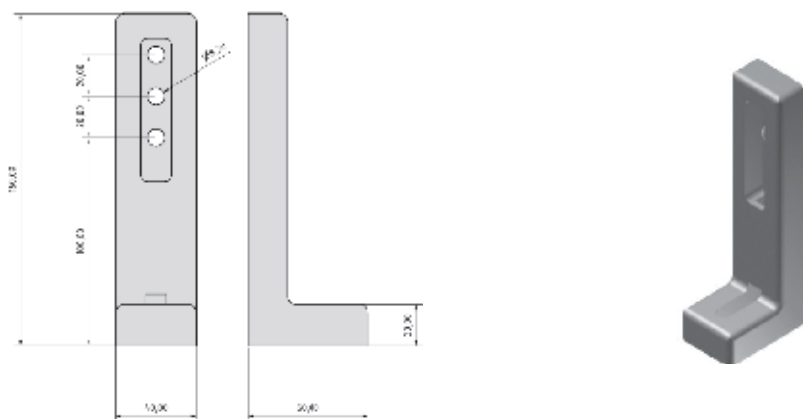
**Profile 6**



Material GD-AL  
 Colour Black  
 Weight 84 g

**L-based foot adjustable** Article No. PZ1296

**Profile 8**



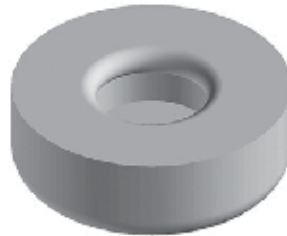
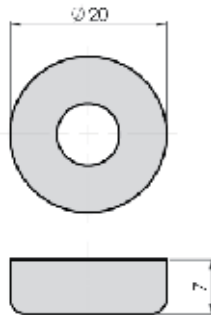
Material GD-ZN  
 Colour Black  
 Weight 191 g



# Rubber Insert

**Rubber insert D30** Article No. PZ1460

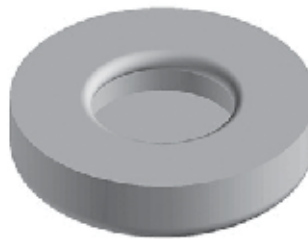
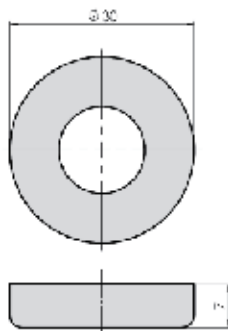
**Profile 8**



Material	NBR
Colour	Black
Weight	2 g

**Rubber insert D40** Article No. PZ1465

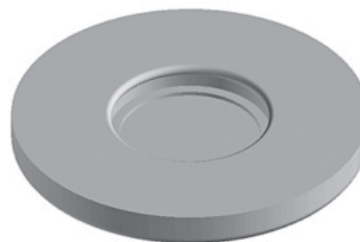
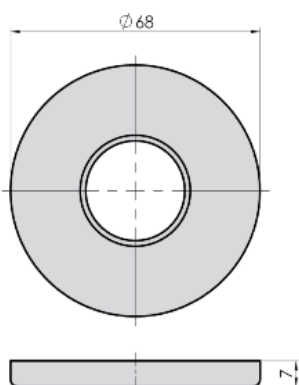
**Profile 8**



Material	NBR
Colour	Black
Weight	4 g

**Rubber insert D80** Article No. PZ1475

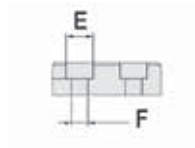
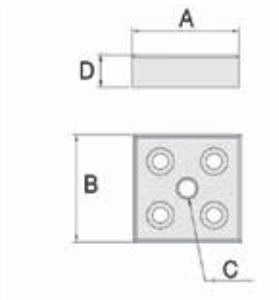
**Profile 8**



Material	NBR
Colour	Black
Weight	23 g

# Foot Plates

Material Die-cast zinc  
 Colour Black



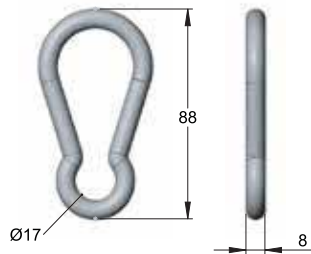
Article No.	System	A	B	C(Ø)	D	E(Ø)	F(Ø)	Weight (g)
PZ3010	6	30	60	M8	12	11	7	103
PZ3030	6	60	60	M8	12	11	7	194
PZ1010	8	40	80	M8	16	15	9	213
PZ1020	8	40	80	M12	16	15	9	209
PZ1030	8	80	40	M8	16	15	9	213
PZ1040	8	80	40	M12	16	15	9	209
PZ1050	8	80	80	M8	16	15	9	438
PZ1060	8	80	80	M12	16	15	9	433
PZ1070	8	80	80	M12	16	15	9	438
PZ1080	8	80	80	M12	16	15	9	433

Other threads on request

# Accessories

**Carabiner** Article No. PZ1245

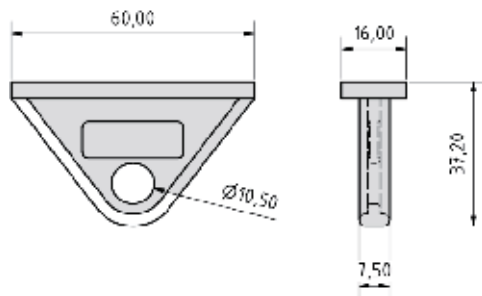
**Profile 8**



Material	ST
Colour	Grey
Weight	27 g

**Runner for carabiner** Article No. PZ1250

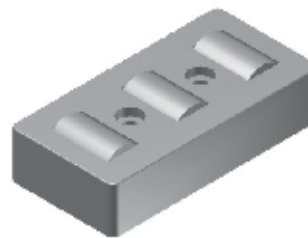
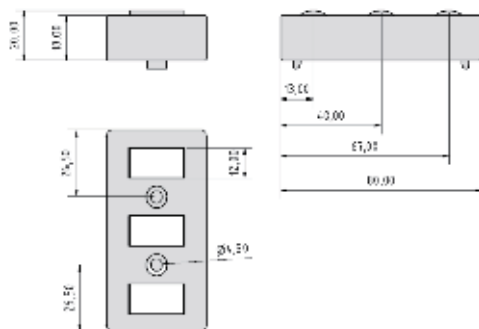
**Profile 8**



Material	PA-GF
Colour	Black
Weight	10 g

**Roller element 80** Article No. PZ1955

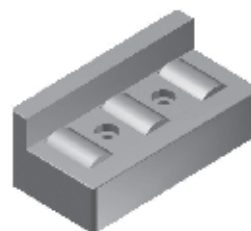
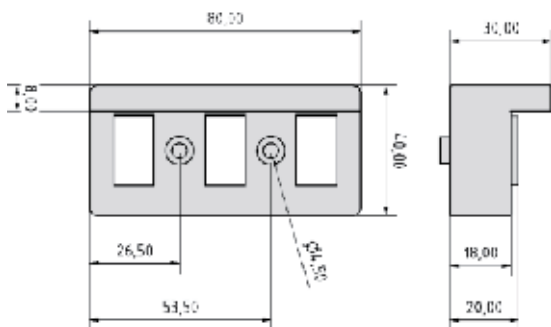
**Profile 8**



Material	PA-GF
Colour	Black
Weight	45 g

**Roller element with side** Article No. PZ1960

**Profile 8**

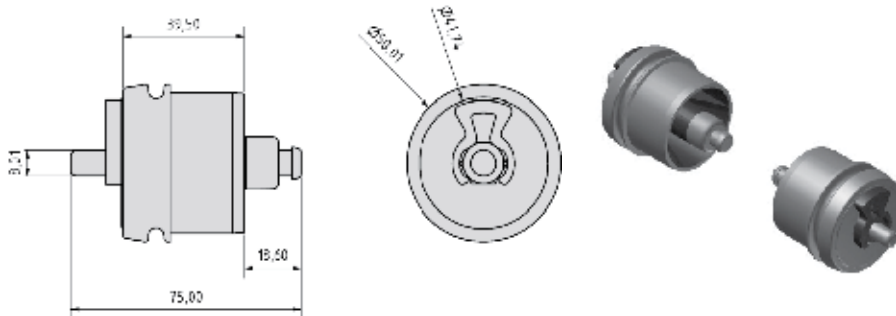


Material	PA-GF
Colour	Black
Weight	50 g

# Accessories

**Conveyor roller TR50** Article No. PZ1975

**Profile 8**



Material	PA-GF
Colour	Black
Weight	250 g

**Slide strip** Article No. PZ1265

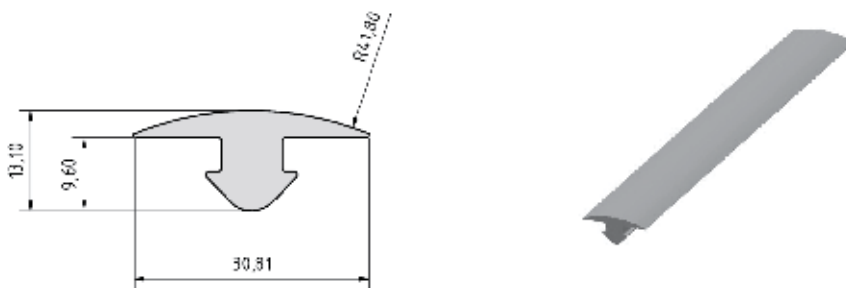
**Profile 8**



Material	PP
Colour	Black
Weight	140 g/m
Length	2 m

**Rubber cover** Article No. PZ1260

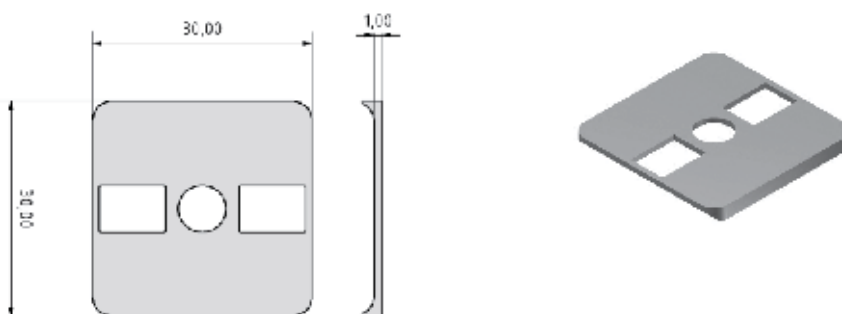
**Profile 8**



Material	NBR
Colour	Black
Weight	160 g/m
Length	2 m

**Radius seal 30x30** Article No. PZ3250

**Profile 6**

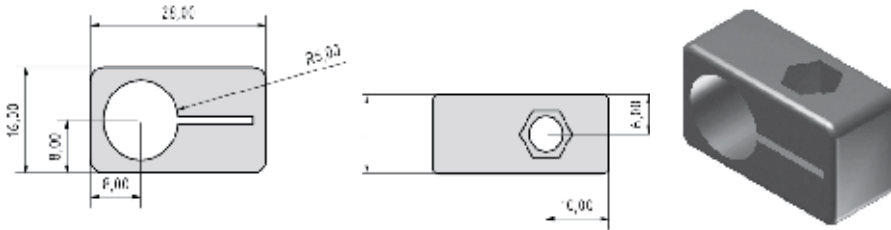


Material	PA
Colour	Grey
Weight	1,1 g

# Sensor & Cable Holders

**Sensor holder D12** Article No. PZ1230

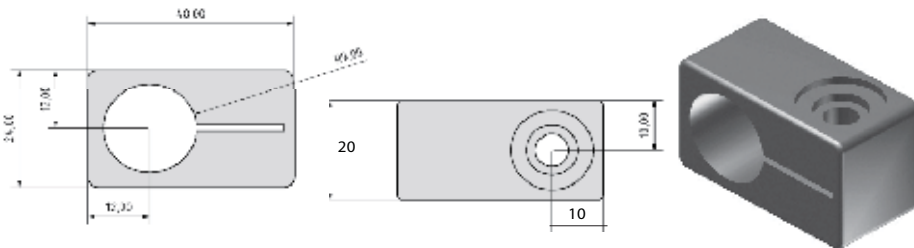
**Profile 8**



Material	PA-GF
Colour	Black
Weight	6 g

**Sensor holder D20** Article No. PZ1231

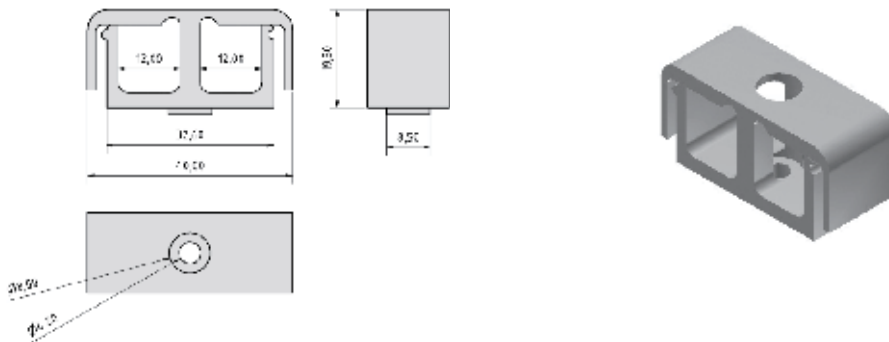
**Profile 8**



Material	PA-GF
Colour	Black
Weight	22 g

**Cable holder** Article No. PZ1185

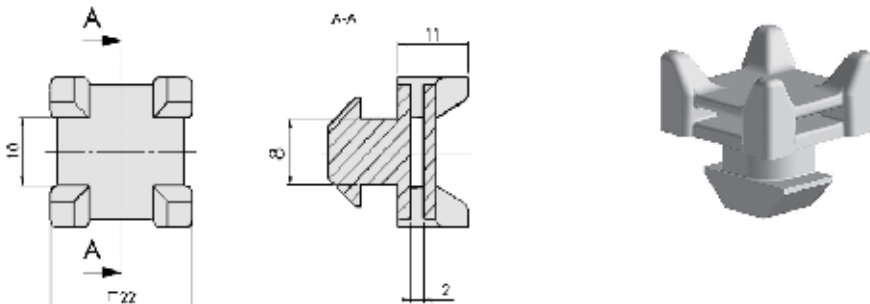
**Profile 8**



Material	PA-GF
Colour	Black
Weight	10 g

**Strips holder variable PA** Article No. PZ1210

**Profile 8**



Material	PA-GF
Colour	Black
Weight	4 g

# Castors

**Castor** Article No. 5940-100

---



Material	PA
Colour	White/Black
Wheel diameter	100 mm
Dyn load capacity	100 kg
Height	119 mm
Weight	629 g

**Castor brake** Article No. 5947

---



Material	PA
Colour	White/Black
Colour pedal	Red, green
Wheel diameter	100 mm
Dyn load capacity	100 kg
Height	119 mm
Weight	750 g

**Castor** Article No. 5940-75

---



Material	PA
Colour	White/Black
Wheel diameter	75 mm
Dyn load capacity	90 kg
Height	78 mm
Weight	216 g

**Castor brake** Article No. 5945

---



Material	PA
Colour	White/Black
Colour pedal	Red, green
Wheel diameter	75 mm
Dyn load capacity	90 kg
Height	78 mm
Weight	237 g

# Linear Components & Solutions



**BALL SCREWS**  
High efficiency ball screws and nuts.



**LINEAR UNIT QME**  
Complete linear drive unit with ball bushings and ball screws.



**LINEAR UNIT RHL**  
Complete unit with tooth belt.



**LINEAR UNITS**  
Complete unit with ball screw or tooth belt.



**ALUMINIUM PROFILES**  
A full program of aluminium profiles and accessories.



**BELT CONVEYOR**  
Transportation system with different drive options



**U-RAIL**  
Rollers in steel or polyamide. For light, standard or heavy load. Mounted in U-rails.



**COMPACT RAIL**  
No more problems with parallelism. Low noise. Lifetime lubricated bearings.



**C-RAIL**  
A simple and cost effective linear bearing system.



**LINEAR RAIL SYSTEM**  
The most standardized linear rail system.



**MINIATURE**  
Range from 3 mm up to 15 mm.



**EASY RAIL**  
A strong solution for short strokes.



**ROLLER GUIDES**  
Four raceways with rollers. High load capacity.



**HEAVY TELESCOPIC**  
The strongest solution for extraction.



**LIGHT TELESCOPIC**  
Telescopic systems for smooth movement.



**BALL BEARINGS**  
Linear ball bearings and hardened steel shafts.

Every care has been taken to ensure accuracy of the informations in this catalogue. No liability can be accepted for any errors or omissions. Even partial reproduction allowed only by written permission by Rolco.

**Rollco AB**  
Box 22234  
Ekvändan 3  
250 24 Helsingborg  
Sweden  
Tel. +46 42 150040  
Fax +46 42 150045  
[www.rollco.se](http://www.rollco.se)

**Rollco A/S**  
Ladegårdsvej 2  
7100 Vejle  
Denmark  
Tel. +45 7552 2666  
Fax +45 7552 0708  
[www.rollco.dk](http://www.rollco.dk)

**Rollco Oy**  
Sarankulmankatu 12  
33900 Tampere  
Finland  
Tel. +358 207 57 97 90  
Fax +358 207 57 97 99  
[www.rollco.fi](http://www.rollco.fi)

**Rollco Norge AS**  
Industrigata 6  
3414 Lierstranda  
Norway  
Tel. +47 32 84 00 34  
Fax +47 32 84 00 91  
[www.rollco.no](http://www.rollco.no)

**Rollco Taiwan**  
No. 28, Lane 125, Da-an Road  
Shulin District 238  
New Taipei City, Taiwan  
Tel. +886-2-8687-2726  
Fax +886-2-8687-2720  
[www.rollco-tw.com](http://www.rollco-tw.com)



**ROLLCO**  
SPECIALIZED  
ON LINEAR MOTION