

## XUP---.0700

- Extra sustainable
- Extra exact
- Extra strong
- Extra long-lasting
- Chamber dimension tolerance 0,2 mm
- Max. loading pressure 1060 Mpa
- Elastic limit  $\geq$  550 Mpa
- Tensile strength 700 ... 900 Mpa
- Special machining on request
- Max length in one piece 8,8 m

Ordering example: XUP 070.0700-2800

U-Profile with inside measurement 74,1 mm, length 2800 mm

Dimensions in mm.

**Material:** 25 MnV5mod with plenty more load capacity

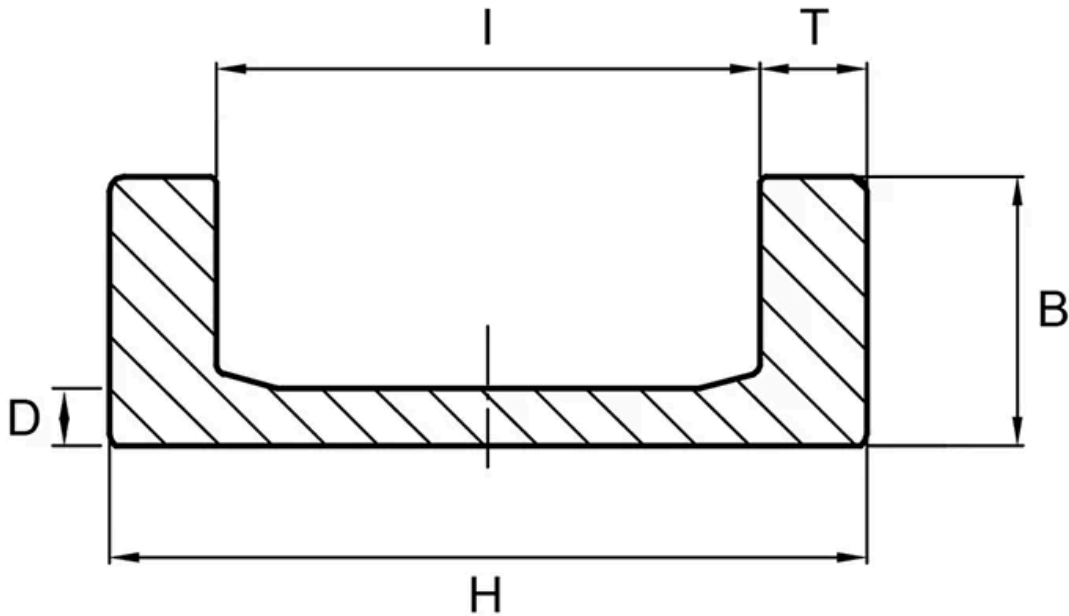
**Sizes Available:** 60; 70; 90; 110; 150



## General Data

| Designation | Weight (kg/m) |
|-------------|---------------|
| XUP060.0700 | 9.82          |
| XUP070.0700 | 13.97         |
| XUP090.0700 | 27.65         |
| XUP110.0700 | 34.77         |
| XUP150.0700 | 50.99         |

## Dimensions



| Designation | B         | D         | H     | I          | T         |
|-------------|-----------|-----------|-------|------------|-----------|
| XUP060.0700 | 36        | 7 ±0.5    | 86.5  | 65.8 ±0.1  | 10.3 ±0.5 |
| XUP070.0700 | 40 ±0.8   | 7.7 ±0.5  | 103.2 | 74.1 ±0.1  | 14.5 ±0.5 |
| XUP090.0700 | 53 ±0.5   | 12.7 ±0.5 | 135.4 | 92.7 ±0.1  | 21.3 ±0.5 |
| XUP110.0700 | 61.2 ±0.8 | 14 ±0.5   | 157.2 | 111.7 ±0.1 | 22.7 ±0.5 |
| XUP150.0700 | 71.2 ±0.8 | 19.4 ±0.5 | 201.5 | 153.4 ±0.1 | 24 ±0.5   |