

## PAS ---.0200

- Polyamide roller combined – fixed
- Lubricated for lifetime
- High abrasion resistance
- Low friction
- High chemical resistance to alcohol, salts, greases and certain acids and alkalis in diluted concentration.

Reduction of value by speed of:

- 1 m/sec: 0%
- 2 m/sec: -20%
- 3 m/sec: -30%

Use profile UP---.0730. See Fixing element rectangular and square.

Order example: Roller + fixing plate PAS040.0360/BQ1000  
Roller Ø 40 mm - welded with mounting element 50 mm x  
50 mm x 8 mm

Dimensions in mm.

**Temperature:** Maximum working temperature 80° C

**Speed:** Travel speed up to 5 m/sec

**Roller Type:** Polyamide

**Sizes Available:** 100; 125

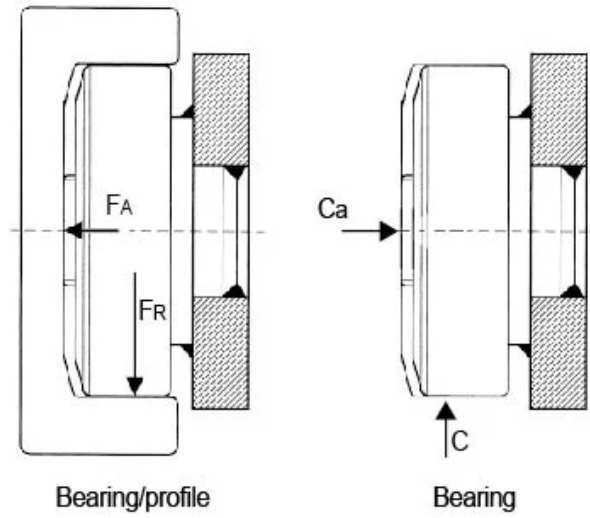


## PAS ---.0200



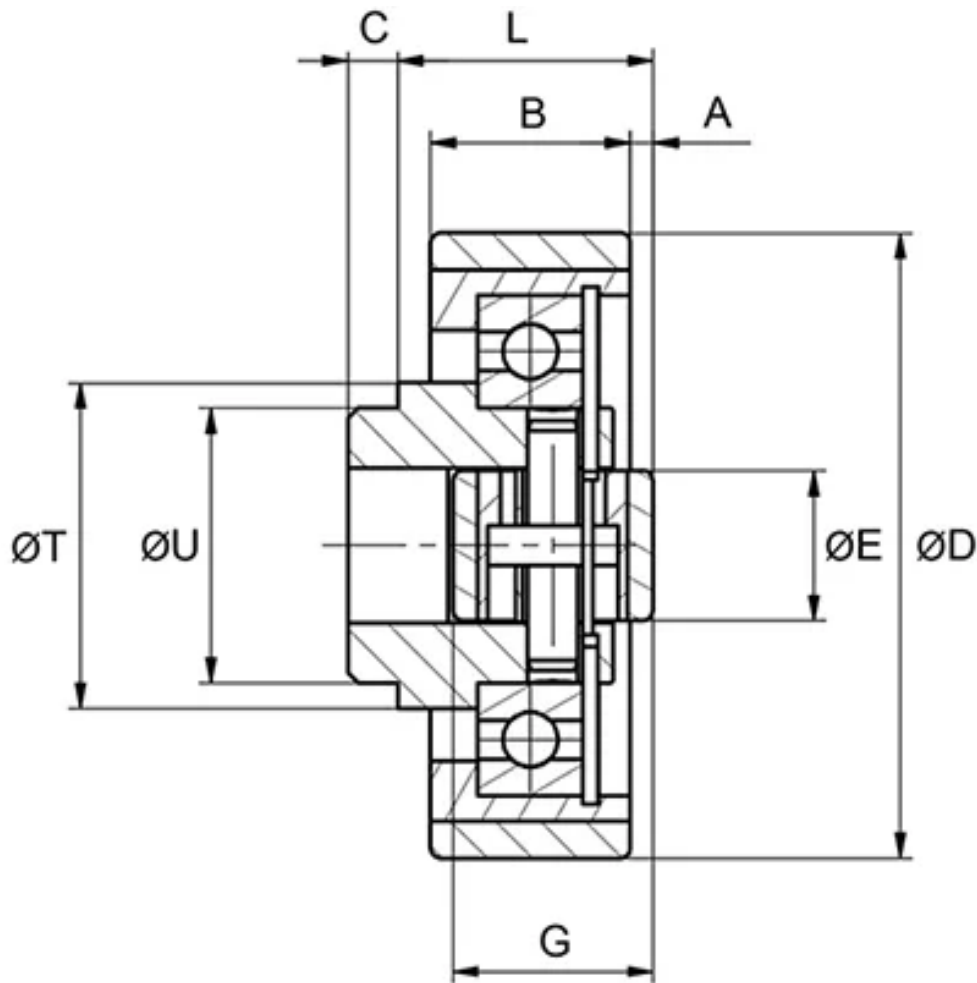
## General Data

FA = System Load Capacity Axial  
 FR = System Load Capacity Radial  
 Ca = Dynamic Load Capacity Axial  
 C = Dynamic Load Capacity Radial



Designation	System Load Capacity Radial (N)	System Load Capacity Axial (N)
PAS100.0200	2500	900
PAS125.0200	6000	1300

## Dimensions



Designation	A	B	C	D	E	G	L	T	U
PAS100.0200	6.5	25	8	101.2	15	40	41	51	45
PAS125.0200	4.5	40	10	125	30	40	51	65	55