

TR---.0200

- Lubricated for lifetime
- Optional from size 60 relubricable.

Use profile UP---.0700. Profile UP---.0730 for TR050.0200

Fixing square element BQ---.1000

Rectangular fixing element BR---.1100

C = Dynamic load capacity radial bearing

Ca = Static load capacity axial bearing

Note! System Load Capacity refers to capacity of both rail and bearing. Dynamic Load Capacity refers to bearing. Dimensions in mm.

Roller Type: Standard

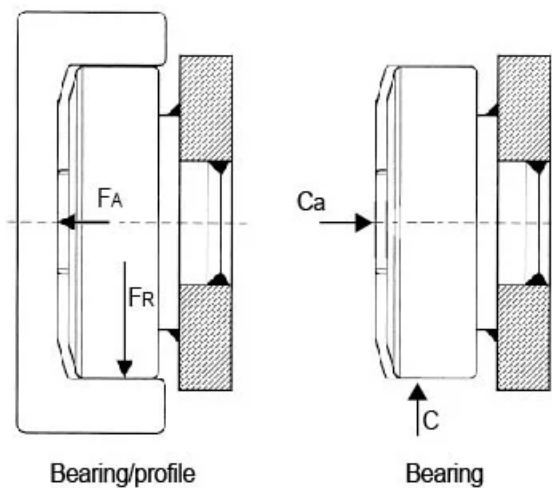
Sizes Available: 50; 60; 70; 80; 90; 110; 120; 150; 180





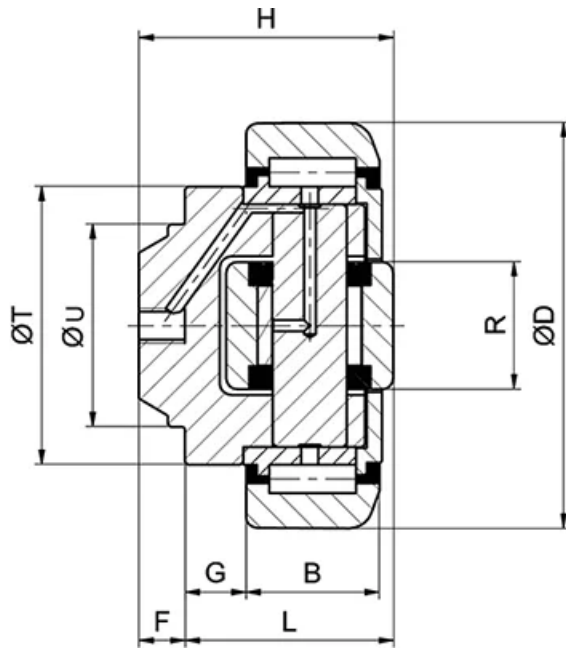
General Data

FA = System Load Capacity Axial
 FR = System Load Capacity Radial
 Ca = Dynamic Load Capacity Axial
 C = Dynamic Load Capacity Radial



Designation	System Load Capacity Radial (N)	System Load Capacity Axial (N)	Dynamic Load Capacity Axial (N)	Dynamic Load Capacity Radial (N)	Profile
TR050.0200	5300	2000	7500	24500	UP-- -.0730
TR060.0200	8870	2950	11000	31000	UP-- -.0700
TR070.0200	11400	3150	13000	45500	UP-- -.0700
TR080.0200	12870	5000	18000	48000	UP-- -.0700
TR090.0200	20370	5100	23000	68000	UP-- -.0700
TR110.0200	24060	8900	31000	81000	UP-- -.0700
TR120.0200	33440	9800	43000	110000	UP-- -.0700
TR150.0200	51940	17400	68000	151000	UP-- -.0700
TR180.0200	76000	23000	73000	207000	UP-- -.0700

Dimensions



Designation	B	D	F	G	H	L	R	T	U
TR050.0200	17	52.5	6	5	33	27	16	40	30
TR060.0200	20	62.5	7	9	37.5	30.5	20	42	30
TR070.0200	23	70.1	8	10.5	44	36	22	48	35
TR080.0200	23	77.7	11.5	10.5	48	36.5	24	54	40
TR090.0200	30	88.4	13	10.5	57	44	26	59	45
TR110.0200	31	107.7	14	20	69	55	34	71	60
TR120.0200	37	123	16.3	14	72.3	56	40	80	60
TR150.0200	45	149	20	8.5	78.5	58.5	50	103	60
TR180.0200	57.3	180	19.4	12.5	95.7	76.3	60	124	100