

## STR---.6200

- This roller with axial bearing gives 40% higher load capacity
- Lubricated for lifetime
- Special dimensions on request

Use profile UP---.0700

Order example: STR 080.6200  
Standard roller STR 080.6200

Dimensions in mm.

**Roller Type:** Standard

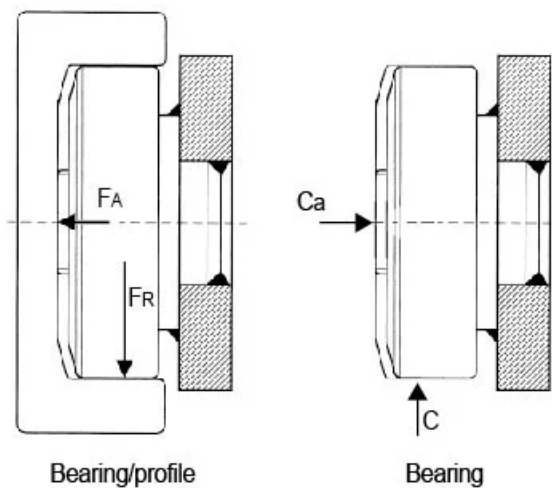
**Sizes Available:** 60; 70; 80; 90; 110; 120; 150





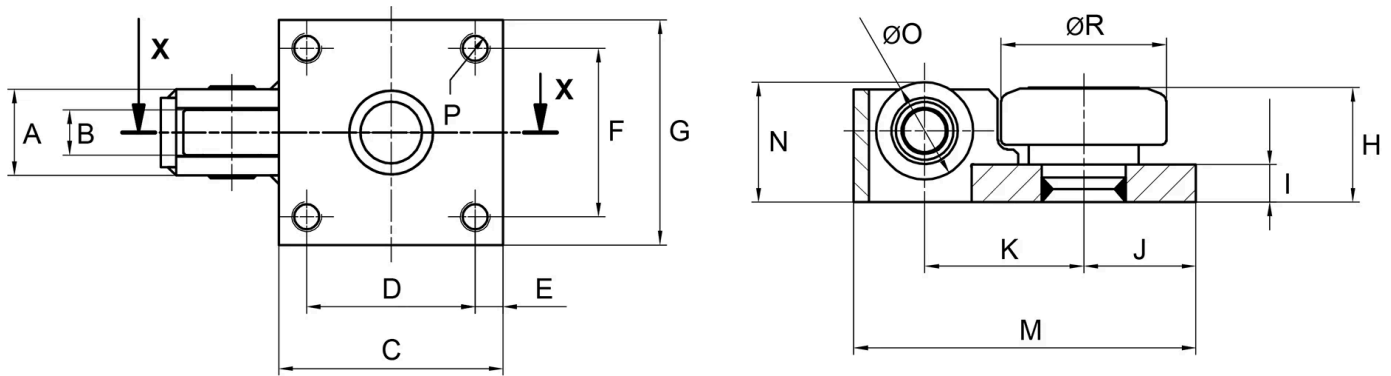
## General Data

FA = System Load Capacity Axial  
 FR = System Load Capacity Radial  
 Ca = Dynamic Load Capacity Axial  
 C = Dynamic Load Capacity Radial



Designation	System Load Capacity Radial (N)	System Load Capacity Axial (N)	Profile
STR060.6200	8870	7000	UP---.0700
STR070.6200	11400	11000	UP---.0700
STR080.6200	12870	11000	UP---.0700
STR090.6200	20370	13000	UP---.0700
STR110.6200	24060	20000	UP---.0700
STR120.6200	33440	20000	UP---.0700
STR150.6200	51940	20000	UP---.0700

## Dimensions



Designation	A	B	C	D	E	F	G	H	I
STR060.6200	38	20	70	50	10	50	70	41.5	12
STR070.6200	42	24	80	60	10	60	80	49	15
STR080.6200	46	24	100	70	15	70	100	48.5	15
STR090.6200	46	24	120	90	15	90	120	61	20
STR110.6200	54	28	140	100	20	100	140	71.5	20
STR120.6200	58	28	140	100	20	100	140	71.5	20
STR150.6200	54	28	160	120	20	120	160	79	25

Designation	J	K	M	N	O	P	R
STR060.6200	35	55	118	42.5	Ø 40	4 x M10	Ø 62.5
STR070.6200	40	65	137	51	Ø 47	4 x M12	Ø 70.1
STR080.6200	50	75	157	51.5	Ø 47	4 x M12	Ø 77.7
STR090.6200	60	85	183	64	Ø 52	4 x M16	Ø 88.4
STR110.6200	70	105	223	75	Ø 72	4 x M16	Ø 107.1
STR120.6200	70	107	225	76	Ø 72	4 x M16	Ø 123
STR150.6200	80	120	248	83.5	Ø 72	4 x M16	Ø 149