

## Cables

For Mini Linear Units MGBS & MGTB and MCE & MSCE  
Mini Electric Cylinders & Sliders.

See documentation below for more information.

Drive to motor cables in general consist of:

- a motor cable,
- an encoder cable,
- a brake cable (only if a motor with a brake is used).

Power cable is used for supplying the power from power supply to the drive.

Signal cable is mandatory for the following cases:

- if a motor with a brake is used,
- if a pulse/direction drive control is used,
- if the limit switches are used.

Dimensions in mm.





## General Data

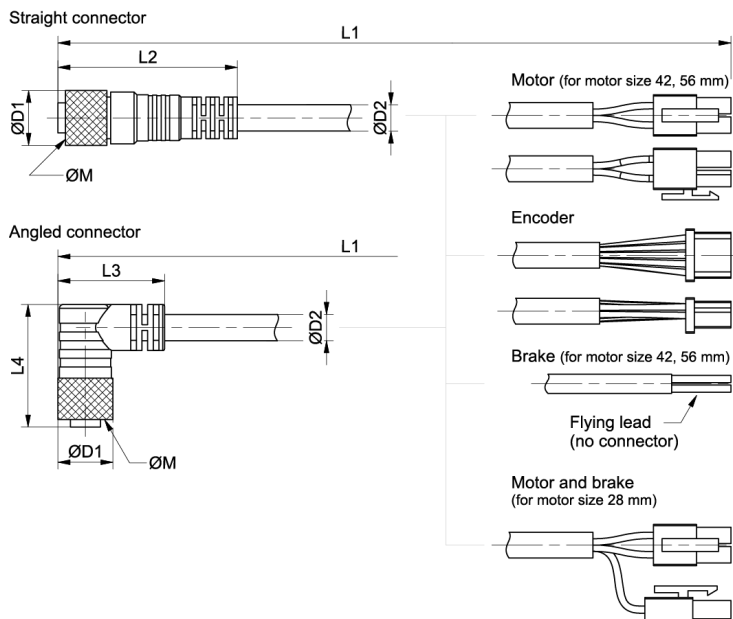
Designation	Compatible with	Type	Cable Length (m)	Cable Diameter D (mm)	Material
STCF-M-A12-...	STMN-42-... ; STMN-56-... ; STDF-...	Motor cable, angled connector	3, 5, 10	5.1	TPE, black
STCF-M-S12-...	STMN-42-... ; STMN-56-... ; STDF-...	Motor cable, straight connector	3, 5, 10	5.1	TPE, black
STCF-B-A8-...	STMN-42-...-B ; STMN-56-...-B ; STDF-...	Brake cable, angled connector	3, 5, 10	4.5	TPE, black
STCF-B-S8-...	STMN-42-...-B ; STMN-56-...-B ; STDF-...	Brake cable, straight connector	3, 5, 10	4.5	TPE, black
STCF-E-A12-...	STMN-42-... ; STMN-56-... ; STDF-...	Encoder cable, angled connector	3, 5, 10	6.7	TPE, black
STCF-E-S12-...	STMN-42-... ; STMN-56-... ; STDF-...	Encoder cable, straight connector	3, 5, 10	6.7	TPE, black
STCF-P-02	STDF-...	Power cable	2	4.6	PVC, black
STCF-S-EC-02	STDF-...-EC	Signal cable, EtherCAT	2	6.4	PVC, black
STCF-S-EN-02	STDF-...-EN	Signal cable, Ethernet based communication	2	6.9	PVC, black
STCF-S-PD-02	STDF-...-PD	Signal cable, Pulse-direction control	2	6.4	PVC, black
STCS-E-A12-...	STDL-040-C-PN	Encoder cable	3, 5, 10	6.3	-
STCS-E-S12-...	STDL-040-C-PN	Encoder cable	3, 5, 10	6.3	-
STCS-M-A12-...	STDL-040-C-PN	Motor cable	3, 5, 10	5.7	-
STCS-M-S12-...	STDL-040-C-PN	Motor cable	3, 5, 10	5.7	-
STCS-B-A8-...	STDL-040-C-PN	Brake cable	3, 5, 10	4.5	-
STCS-B-S8-...	STDL-040-C-PN	Brake cable	3, 5, 10	4.5	-

Designation	Bending Radius (mm)	Shielded	Connector Size	Temperature Range Fixed (°C)	Temperature Range Flexing (°C)
STCF-M-A12-...	min. 7,5 × D	Yes	M12	-40/+70	+5/+70
STCF-M-S12-...	min. 7,5 × D	Yes	M12	-40/+70	+5/+70
STCF-B-A8-...	min. 7,5 × D	Yes	M8	-40/+70	+5/+70

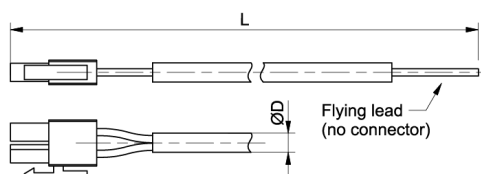
Designation	Bending Radius (mm)	Shielded	Connector Size	Temperature Range Fixed (°C)	Temperature Range Flexing (°C)
STCF-B-S8-...	min. $7,5 \times D$	Yes	M8	-40/+70	+5/+70
STCF-E-A12-...	min. $7,5 \times D$	Yes	M12	-40/+70	+5/+70
STCF-E-S12-...	min. $7,5 \times D$	Yes	M12	-40/+70	+5/+70
STCF-P-02	-	Yes	-	-	-
STCF-S-EC-02	-	Yes	-	-	-
STCF-S-EN-02	-	Yes	-	-	-
STCF-S-PD-02	-	Yes	-	-	-
STCS-E-A12-...	Min. 63	-	-	-20/+80	-25/+60
STCS-E-S12-...	Min. 63	-	-	-20/+80	-25/+60
STCS-M-A12-...	Min. 57	-	-	-20/+80	-25/+60
STCS-M-S12-...	Min. 57	-	-	-20/+80	-25/+60
STCS-B-A8-...	Min. 45	-	-	-20/+80	-5/+60
STCS-B-S8-...	Min. 45	-	-	-20/+80	-5/+60

## Dimensions

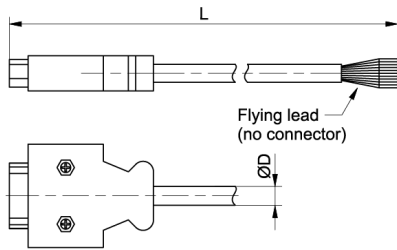
### Motor, encoder and brake cables (motor and drive side)



### Power cables for the stepper motors (only for the STDF drives)



**Signal cables for the stepper motors (only for the STDF drives)**



Designation	L1	L2	L3	L4	D1	D2	M	L	D
STCF-M-A12-...	3, 5, 10 (m)	47.7	28.4	32.6	14.6	5.1	M12	-	-
STCF-M-S12-...	3, 5, 10 (m)	47.7	28.4	32.6	14.6	5.1	M12	-	-
STCF-B-A8-...	3, 5, 10 (m)	41.7	30.9	25.2	9.9	4.5	M8	-	-
STCF-B-S8-...	3, 5, 10 (m)	41.7	30.9	25.2	9.9	4.5	M8	-	-
STCF-E-A12-...	3, 5, 10 (m)	47.7	28.4	32.6	14.6	6.7	M12	-	-
STCF-E-S12-...	3, 5, 10 (m)	47.7	28.4	32.6	14.6	6.7	M12	-	-
STCF-P-02	-	-	-	-	-	-	-	2 (m)	4.6
STCF-S-EC-02	-	-	-	-	-	-	-	2 (m)	6.4
STCF-S-EN-02	-	-	-	-	-	-	-	2 (m)	6.9
STCF-S-PD-02	-	-	-	-	-	-	-	2 (m)	6.4
STCS-E-A12-...	-	-	-	-	-	-	-	-	-
STCS-E-S12-...	-	-	-	-	-	-	-	-	-
STCS-M-A12-...	-	-	-	-	-	-	-	-	-
STCS-M-S12-...	-	-	-	-	-	-	-	-	-
STCS-B-A8-...	-	-	-	-	-	-	-	-	-
STCS-B-S8-...	-	-	-	-	-	-	-	-	-