

AB-Series

Inline planetary high-end serie.

Powerful, precise, robust, quiet and fast.

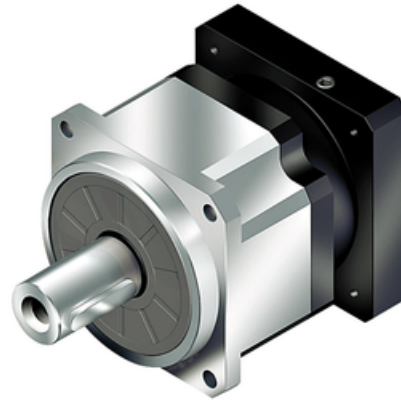
Suitable for all servo applications every single stage ratio 3-10.

Straddle mounted high precision bearings allow for high radial and axial loads.

Design your APEX Gear with the Calculation Tool.

Operating Temperature (°C): -10 ~ +90

Protection Class: IP65



General Data

Designation	Remark
AB042	Measurements and other technical data depending on configuration of gear. Read more in Technical information.
AB060	Measurements and other technical data depending on configuration of gear. Read more in Technical information.
AB060A	Measurements and other technical data depending on configuration of gear. Read more in Technical information.
AB090	Measurements and other technical data depending on configuration of gear. Read more in Technical information.
AB090A	Measurements and other technical data depending on configuration of gear. Read more in Technical information.
AB115	Measurements and other technical data depending on configuration of gear. Read more in Technical information.
AB142	Measurements and other technical data depending on configuration of gear. Read more in Technical information.
AB180	Measurements and other technical data depending on configuration of gear. Read more in Technical information.
AB220	Measurements and other technical data depending on configuration of gear. Read more in Technical information.