

## AF-Series

Inline planetary high-end serie.

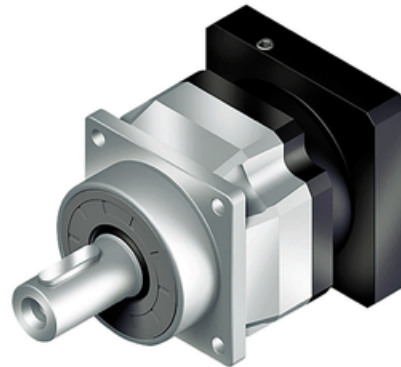
High precision and torque with a taper roller bearing output for higher radial loads, every single stage ratio 3-10.

The AF series is the next generation in planetary technology. Highest precision, highest torque and quiet operation are provided by 100% optimized helical gearing. High axial and radial loads provided by high precision taper roller bearings.

Design your APEX Gear with the Calculation Tool.

**Operating Temperature (°C):** -10 ~ +90

**Protection Class:** IP65



## General Data

Designation	Remark
AF042	Measurements and other technical data depending on configuration of gear. See more information in pdf.
AF060	Measurements and other technical data depending on configuration of gear. See more information in pdf.
AF060A	Measurements and other technical data depending on configuration of gear. See more information in pdf.
AF075	Measurements and other technical data depending on configuration of gear. See more information in pdf.
AF075A	Measurements and other technical data depending on configuration of gear. See more information in pdf.
AF100	Measurements and other technical data depending on configuration of gear. See more information in pdf.
AF140	Measurements and other technical data depending on configuration of gear. See more information in pdf.
AF180	Measurements and other technical data depending on configuration of gear. See more information in pdf.
AF220	Measurements and other technical data depending on configuration of gear. See more information in pdf.