

## AH-Series

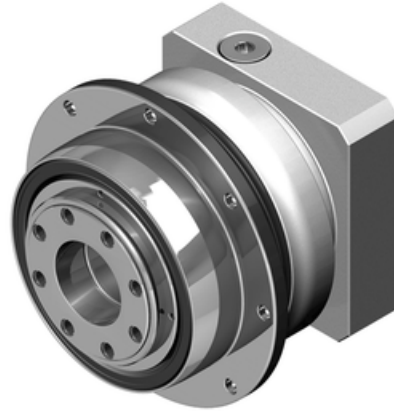
Inline planetary high-end serie.

Highest precision, high wear resistance. Suited for high cycle rate/short move applications.

Design your APEX Gear with the Calculation Tool.

**Operating Temperature (°C):** -10 ~ +90

**Protection Class:** IP65



## General Data

Designation	Remark
AH064	Measurements and other technical data depending on configuration of gear. See more information in pdf.
AH090	Measurements and other technical data depending on configuration of gear. See more information in pdf.
AH110	Measurements and other technical data depending on configuration of gear. See more information in pdf.
AH140	Measurements and other technical data depending on configuration of gear. See more information in pdf.
AH200	Measurements and other technical data depending on configuration of gear. See more information in pdf.
AH255	Measurements and other technical data depending on configuration of gear. See more information in pdf.
AH285	Measurements and other technical data depending on configuration of gear. See more information in pdf.
AH355	Measurements and other technical data depending on configuration of gear. See more information in pdf.
AH450	Measurements and other technical data depending on configuration of gear. See more information in pdf.