

ABR-Series

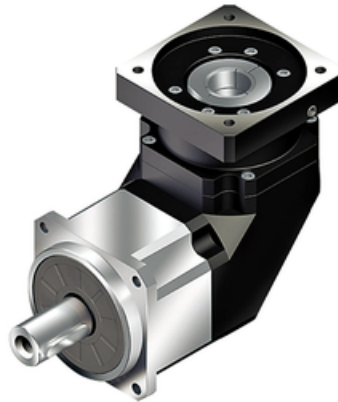
Right-angle planetary high-end serie.

Powerful, precise, robust, quiet and fast, suitable for all servo applications.

The Apex ABR series has a 90° input via helical bevel gear. It features an extremely short, light yet rigid housing and full compatibility with standard motor adapters. Highest precision, highest torque and quiet operation are provided by 100% optimized helical gearing. Straddle mounted high precision bearings allow for high radial and axial loads. Design your APEX Gear with the Calculation Tool.

Operating Temperature (°C): -10 ~ +90

Protection Class: IP65



General Data

Designation	Remark
ABR042	Measurements and other technical data depending on configuration of gear. See more information in pdf.
ABR060	Measurements and other technical data depending on configuration of gear. See more information in pdf.
ABR090	Measurements and other technical data depending on configuration of gear. See more information in pdf.
ABR115	Measurements and other technical data depending on configuration of gear. See more information in pdf.
ABR142	Measurements and other technical data depending on configuration of gear. See more information in pdf.
ABR180	Measurements and other technical data depending on configuration of gear. See more information in pdf.
ABR220	Measurements and other technical data depending on configuration of gear. See more information in pdf.