

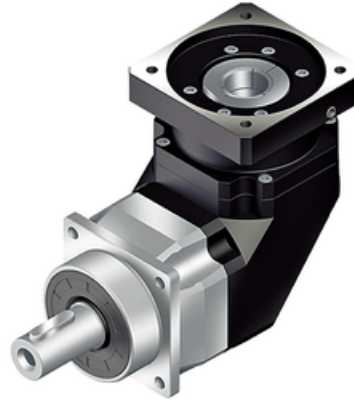
## AFR-Series

Right-angle planetary high-end serie.  
High precision and torque with a taper roller bearing output for higher radial loads.

The Apex AFR series has a 90° input via helical bevel gear. It features an extremely short, light yet rigid housing and full compatibility with standard motor adapters. Highest precision, highest torque and quiet operation are provided by 100% optimized helical gearing. High axial and radial loads provided by high precision taper roller bearings. Design your APEX Gear with the Calculation Tool.

**Operating Temperature (°C):** -10 ~ +90

**Protection Class:** IP65



## General Data

Designation	Remark
<b>AFR042</b>	Measurements and other technical data depending on configuration of gear. See more information in pdf.
<b>AFR060</b>	Measurements and other technical data depending on configuration of gear. See more information in pdf.
<b>AFR075</b>	Measurements and other technical data depending on configuration of gear. See more information in pdf.
<b>AFR100</b>	Measurements and other technical data depending on configuration of gear. See more information in pdf.
<b>AFR140</b>	Measurements and other technical data depending on configuration of gear. See more information in pdf.
<b>AFR180</b>	Measurements and other technical data depending on configuration of gear. See more information in pdf.
<b>AFR220</b>	Measurements and other technical data depending on configuration of gear. See more information in pdf.