

## Tie Plates

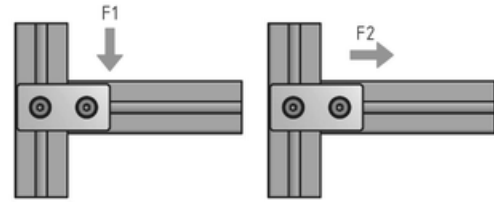
Links two aluminium profiles.

Note: To install the ESD-ready tie plates, use a notched slot nut in order to make a conductive link.

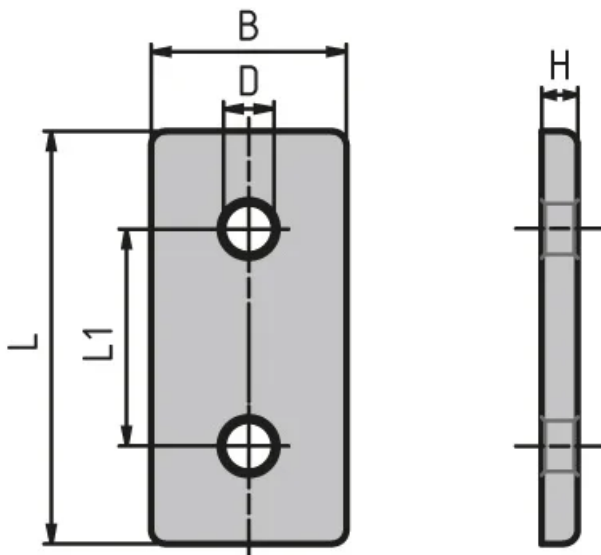
**System:** 20 - Slot 5; 30 - Slot 6

**Type:** Angles Brackets and Corners; Fasteners




**Tie plate loads**


Size	F1 (N)	F2 (N)
20x40	250	300
20x80	350	400
30x60	400	550
30x60	700	800
30x60	700	800

**General Data**


Designation	Description	Material	B	D	H
PV1215	Tie plate 20 × 40 mm	Black powder coated steel	20	5.5	3
PV1216	Tie plate 20 × 40 mm	Nickel-plated aluminium, matt	18	5.5	4
PV1217	Tie plate 20 × 80 mm	Nickel-plated aluminium, matt	18	5.5	5
PV1218	Tie plate 30 × 60 mm	Nickel-plated aluminium, matt	27	7	5
PZ3055	Tie plate 30 × 60 mm	Black powder coated	30	CountersinkDIN74-Am6	3
PV1219	Tie plate 30 × 60 mm	Galvanised steel	30	11	3

Designation	L	ESD	L1	Recommended screw size	Screw Type
PV1215	40	-	20	ISO7380 M5×8	ISO7380 M5×8
PV1216	38	Yes	20	ISO7380 M5×8	ISO7380 M5×8
PV1217	78	Yes	20	ISO7380 M5×8	M6 × 8 (ISO7380)
PV1218	57	-	30	ISO7380 M6×12	ISO7380 M6×12
PZ3055	60	-	30	ISO7991 M6 × 10	ISO7991 M6 × 10

Designation	L	ESD	L1	Recommended screw size	Screw Type
PV1219	60	Yes	30	ISO7380 M6 × 10	ISO7380 M6 × 10