

## Combination Hinge of Stainless Steel

To hinge panels or aluminium profiles.

Material: Wing: Stainless steel SS316, Axle: Stainless steel SS430 F

On site mount: From the front, using M4 countersunk screws

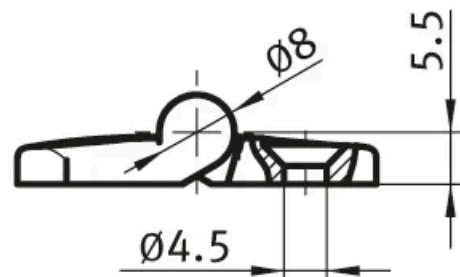
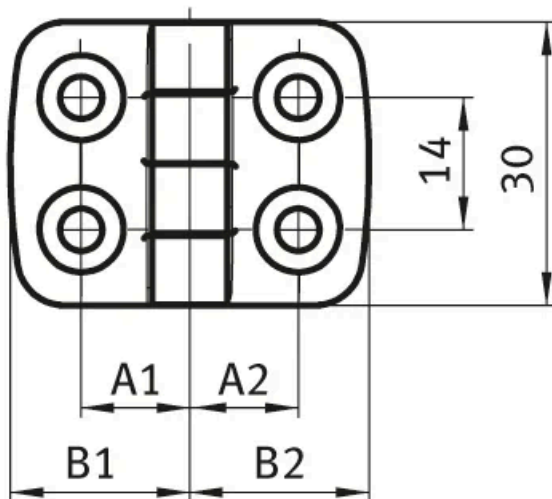
**System:** 20 - Slot 5

**Type:** Hinges





**General Data**



Designation	Description	System	Weight (g)	FAmax (N)	FRmax (N)
PZ5235	Combination Hinge system 20, stainless steel	20 - Slot 5	138	450	700

Designation	A1/A2	B1/B2
PZ5235	11.5/11.5	19/19