

## Swivel Castors, Plate Fitting

Housing made of Polyamide, precision ball bearing in swivel head, plate fitting.

Wheel centre made of Polyamide.

Tread made of Polyurethane, precision ball bearing.

Standard: EN 12530

Hardness of tread: Shore A 92

**Material:** Polyamide

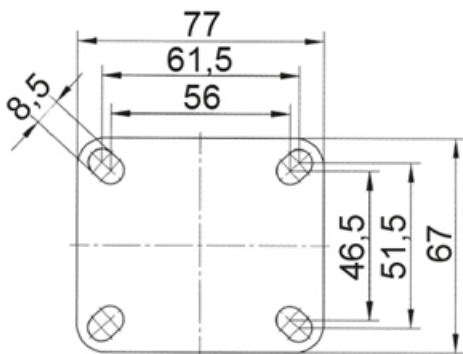
**System:** 40 - Slot 8; 30 - Slot 6; 20 - Slot 5

**Temperature range (°C):** -10° to +40°

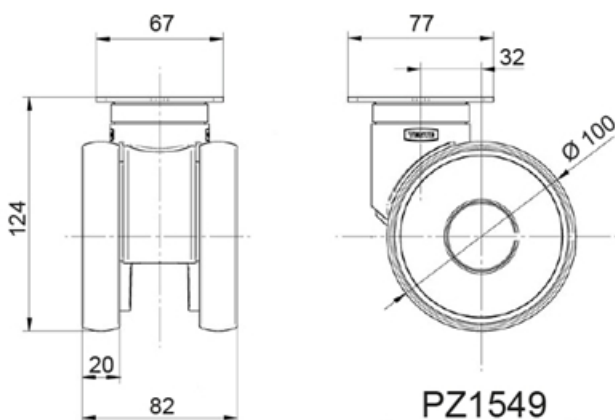
**Type:** Castors



### Plate Fitting



PZ1549

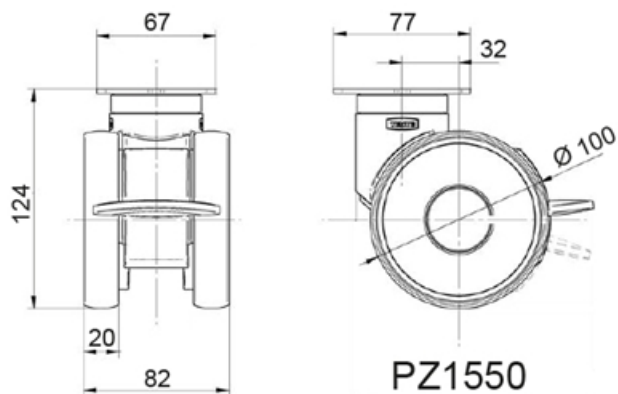


PZ1549

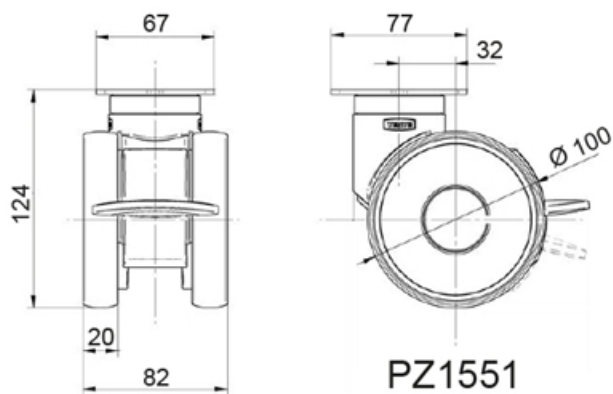


PZ1550

## Swivel Castors, Plate Fitting



PZ1551



## General Data

Designation	Description	Colour	Weight (g)	Swivel Interference (mm)	Load Capacity (kg)
<b>PZ1549</b>	Swivel castor with plate fitting	RAL9002	804	180	100
<b>PZ1550</b>	Swivel castor with directional lock, plate fitting	RAL9002	865	216	100
<b>PZ1551</b>	Swivel castor with total lock, plate fitting	RAL9002	871	216	100

Designation	Static Load Capacity (kg)
<b>PZ1549</b>	200
<b>PZ1550</b>	200
<b>PZ1551</b>	200