

SBI SL

Standard block without flange.
Side nipple, dustproof end seal and self-lubricant container
end seal as option.

* S: Bolt size for bottom mounting type of block

All blocks and rails are also available in Raydent treated
material:

- Corrosion resistant
- Patented black surface
- Balls of stainless steel available as option

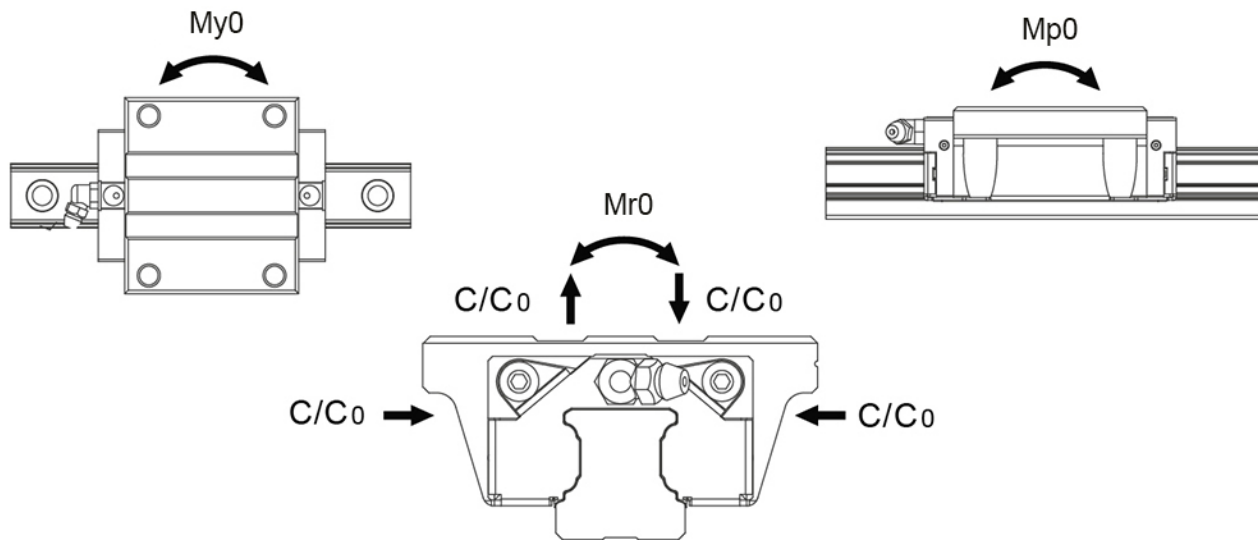
Please contact Rollco for more information.

Dimensions in mm.

Lead times in the table below are only indications. Choice
of preload and other options will affect lead time. Please
contact us for exact delivery time for your request.



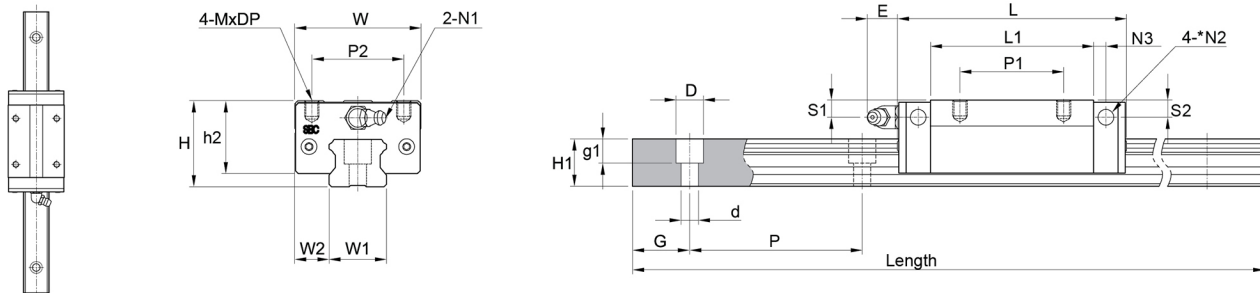
Load and Weight



Designation	Dynamic Load Capacity C (N)	Static Load Capacity C0 (N)	Static Moment Mr0 (Nm)	Static Moment Mp0 (Nm)	Static Moment My0 (Nm)
SBI15SL	14100	24100	160	170	170
SBI20SL	22200	38200	360	330	330
SBI25SL	31500	52100	560	560	560
SBI30SL	42800	65400	850	770	770
SBI35SL	59500	89100	1420	1280	1280
SBI45SL	97200	116300	2480	1900	1900
SBI55SL	127300	181800	4810	2970	2970
SBI65SL	188300	261700	8240	5570	5570

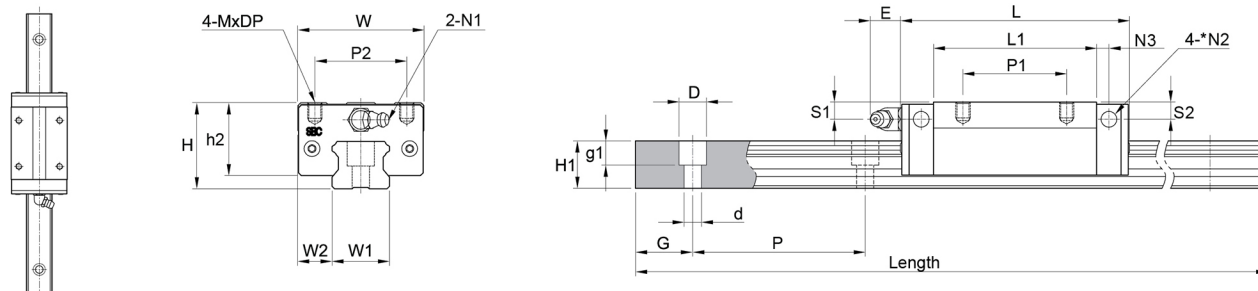
Designation	Weight Block (g)	Weight Rail (g/m)
SBI15SL	190	1300
SBI20SL	410	2200
SBI25SL	690	3000
SBI30SL	1040	4250
SBI35SL	1560	6020
SBI45SL	2800	9770
SBI55SL	4420	13720
SBI65SL	9100	23170

System Dimensions



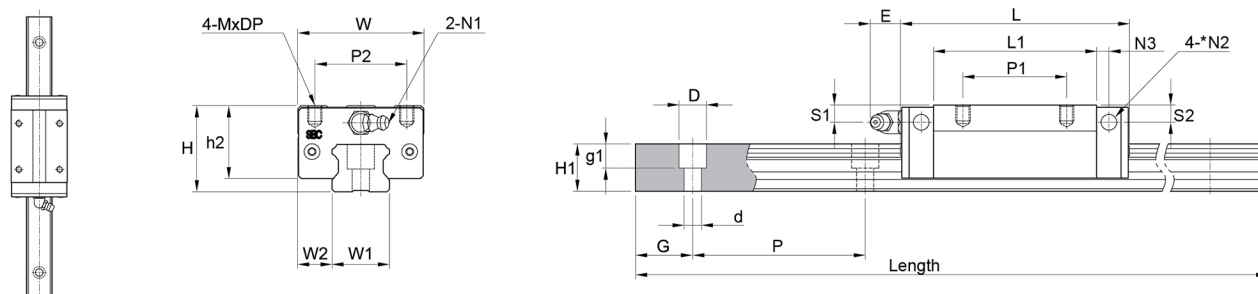
Designation	System Height (H)	System Width (W)	Block Length (L)	W2
SBI15SL	28	34	63.8	9.5
SBI20SL	30	44	78.8	12
SBI25SL	40	48	92	12.5
SBI30SL	45	60	107.6	16
SBI35SL	55	70	124.6	18
SBI45SL	70	86	142	20.5
SBI55SL	80	100	172.4	23.5
SBI65SL	90	126	219.8	31.5

Mounting block hole



Designation	P2	P1
SBI15SL	26	26
SBI20SL	32	36
SBI25SL	35	35
SBI30SL	40	40
SBI35SL	50	50
SBI45SL	60	60
SBI55SL	75	75
SBI65SL	76	70

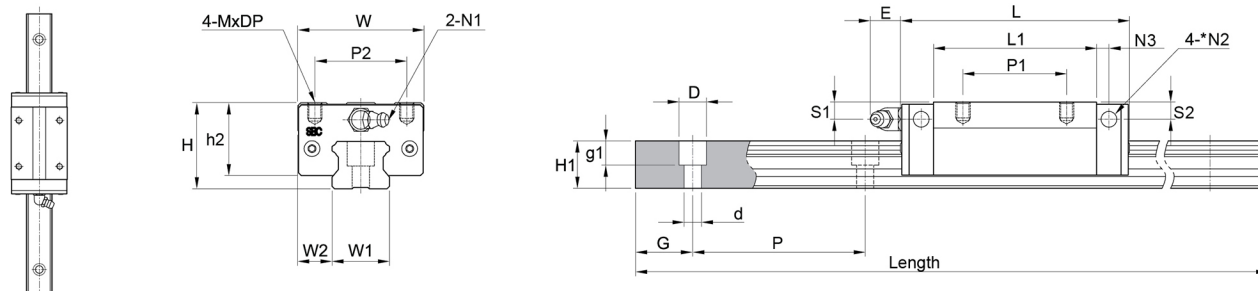
Rail size



Designation	W1	H1	P	D x d x g1	Length
SBI15SL	15	13	60	7.5 x 4.5 x 5.5	3000
SBI20SL	20	16.5	60	9.5 x 6 x 8.5	4000
SBI25SL	23	20	60	11 x 7 x 9	4000
SBI30SL	28	23	80	14 x 9 x 12	4000
SBI35SL	34	26	80	14 x 9 x 12	4000
SBI45SL	45	32	105	20 x 14 x 17	4000
SBI55SL	53	38	120	23 x 16 x 20	4000
SBI65SL	63	53	150	26 x 18 x 22	4000

Designation	Hole Pitch (P)
SBI15SL	60
SBI20SL	60
SBI25SL	60
SBI30SL	80
SBI35SL	80
SBI45SL	105
SBI55SL	120
SBI65SL	150

Block Dimensions



Designation	Block Length (L)	System Width (W)	L1	h2	W2
SBI15SL	63.8	34	45.2	25	9.5
SBI20SL	78.8	44	56.8	25.4	12
SBI25SL	92	48	70	34.5	12.5
SBI30SL	107.6	60	79.6	38	16
SBI35SL	124.6	70	94.6	47.5	18
SBI45SL	142	86	108	61	20.5
SBI55SL	172.4	100	131	68	23.5
SBI65SL	219.8	126	170.4	71	31.5

Designation	S1	E	S2	N3	N1	N2
SBI15SL	8.5	5.5	7.8	3.8	M4x0.7	Ø 3.5
SBI20SL	6	12	5.8	5	M6x1	Ø 3.5
SBI25SL	10	12	9	5	M6x1	Ø 3.5
SBI30SL	11.5	12	10.8	5	M6x1	Ø 5.7
SBI35SL	15	12	15	6	M6x1	Ø 5.7
SBI45SL	20.5	13.5	19.3	6.5	PT1/8	Ø 5.7
SBI55SL	22	13	22	8	PT1/8	Ø 8.7
SBI65SL	14	13	14	10	PT1/8	Ø 8.7

Designation	MxDP	H1
SBI15SL	M4x5	13
SBI20SL	M5x5	16.5
SBI25SL	M6x8	20
SBI30SL	M8x10	23
SBI35SL	M8x10	26
SBI45SL	M10x13	32
SBI55SL	M12x18	38
SBI65SL	M16x16	53