

SBI SL Raydent

Standard block without flange.
Side nipple, dustproof end seal and self-lubricant container
end seal as option.

* S: Bolt size for bottom mounting type of block

Blocks and rails are in Raydent treated material:

- Corrosion resistant
- Patented black surface
- Balls of stainless steel available as option

Please contact Rollco for more information.

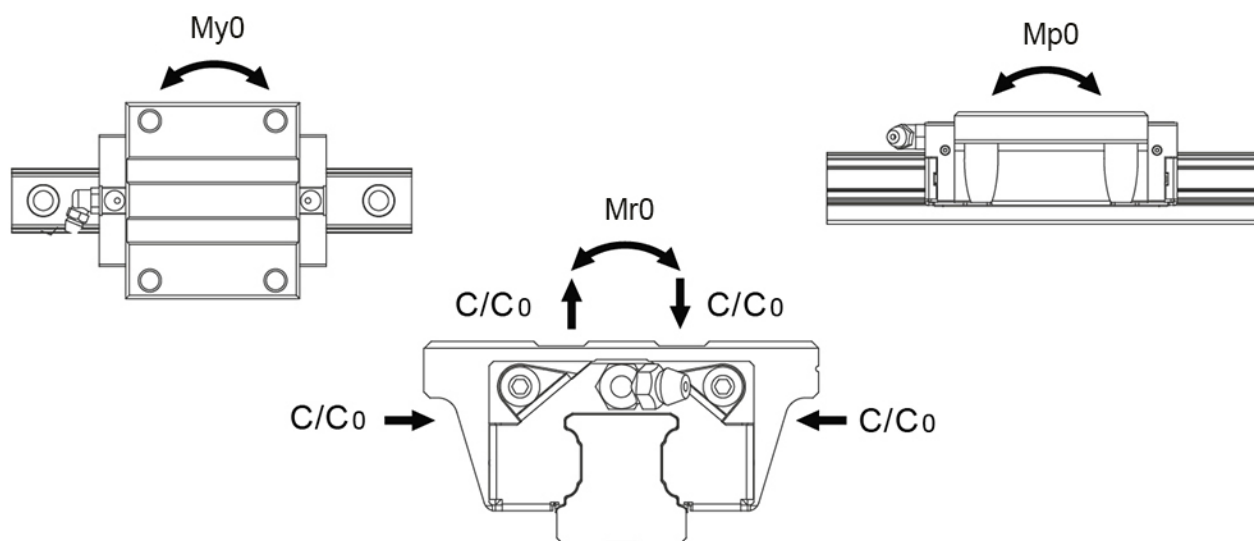
Dimensions in mm.

Lead times in the table below are only indications. Choice of preload and other options will affect lead time. Please contact us for exact delivery time for your request.

Note! Remember to choose Raydent under Surface Treatment when configuring your product.



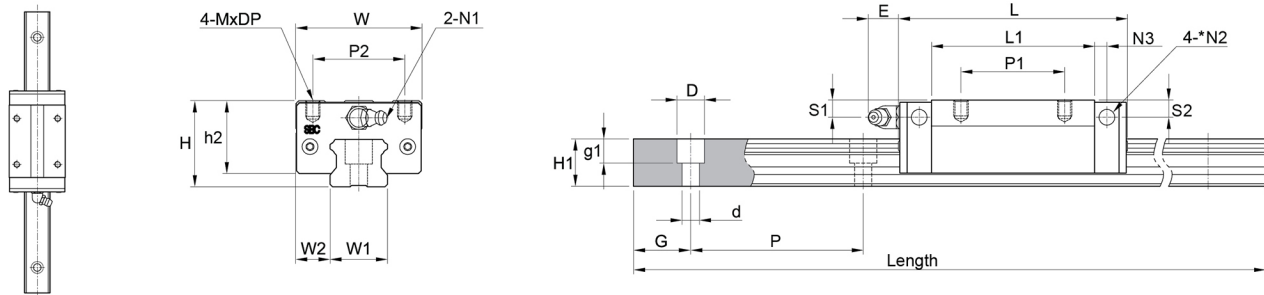
Load and Weight



Designation	Dynamic Load Capacity C (N)	Static Load Capacity C0 (N)	Static Moment Mr0 (Nm)	Static Moment Mp0 (Nm)	Static Moment My0 (Nm)
SBI15SL-R	14100	24100	160	170	170
SBI20SL-R	22200	38200	360	330	330
SBI25SL-R	31500	52100	560	560	560
SBI30SL-R	42800	65400	850	770	770
SBI35SL-R	59500	89100	1420	1280	1280
SBI45SL-R	97200	116300	2480	1900	1900
SBI55SL-R	127300	181800	4810	2970	2970
SBI65SL-R	188300	261700	8240	5570	5570

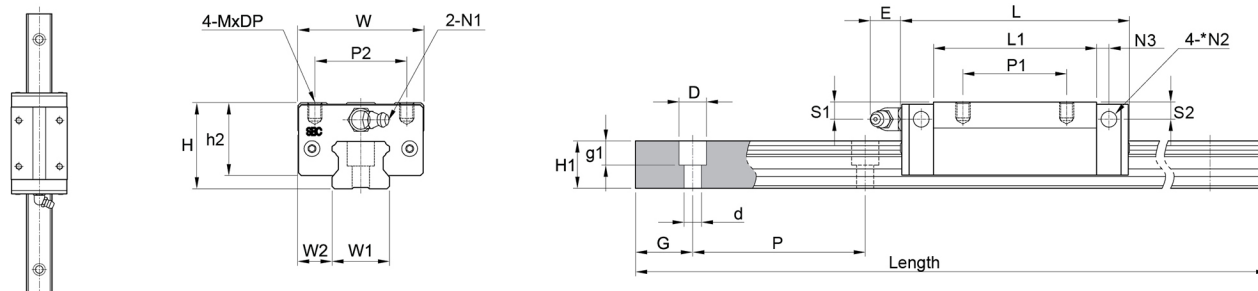
Designation	Dynamic Moment Mr (Nm)	Dynamic Moment Mp (Nm)	Dynamic Moment My (Nm)	Weight Block (g)	Weight Rail (g/m)
SBI15SL-R	94	99	99	190	1300
SBI20SL-R	209	192	192	410	2200
SBI25SL-R	339	339	339	690	3000
SBI30SL-R	556	504	504	1040	4250
SBI35SL-R	948	855	855	1560	6020
SBI45SL-R	2073	1588	1588	2800	9770
SBI55SL-R	3368	2080	2080	4420	13720
SBI65SL-R	5929	4008	4008	9100	23170

System Dimensions



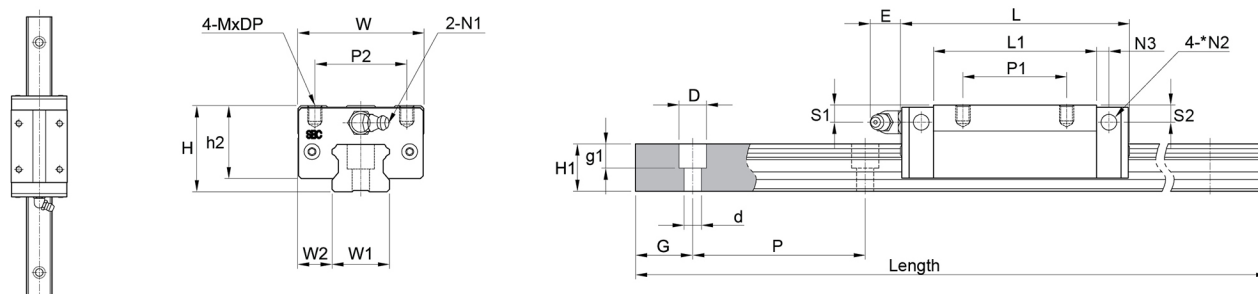
Designation	System Height (H)	System Width (W)	Block Length (L)	W2
SBI15SL-R	28	34	63.8	9.5
SBI20SL-R	30	44	78.8	12
SBI25SL-R	40	48	92	12.5
SBI30SL-R	45	60	107.6	16
SBI35SL-R	55	70	124.6	18
SBI45SL-R	70	86	142	20.5
SBI55SL-R	80	100	172.4	23.5
SBI65SL-R	90	126	219.8	31.5

Mounting block hole



Designation	P2	P1
SBI15SL-R	26	26
SBI20SL-R	32	36
SBI25SL-R	35	35
SBI30SL-R	40	40
SBI35SL-R	50	50
SBI45SL-R	60	60
SBI55SL-R	75	75
SBI65SL-R	76	70

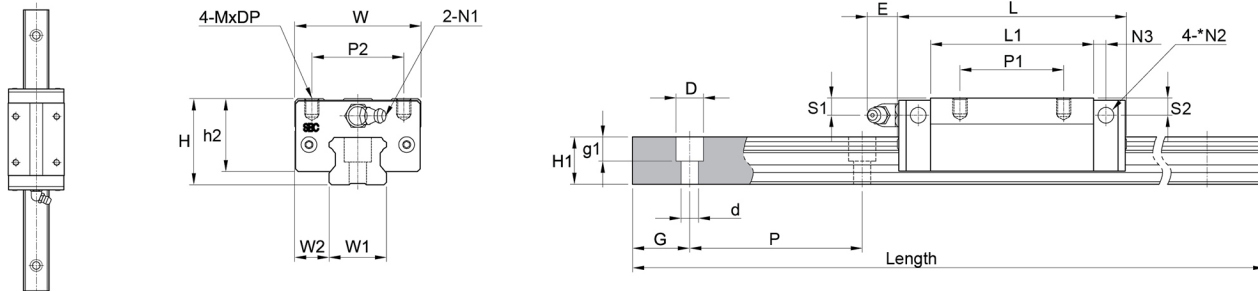
Rail Dimensions



Designation	W1	H1	P	D x d x g1	Length
SBI15SL-R	15	13	60	7.5 x 4.5 x 5.5	3000
SBI20SL-R	20	16.5	60	9.5 x 6 x 8.5	4000
SBI25SL-R	23	20	60	11 x 7 x 9	4000
SBI30SL-R	28	23	80	14 x 9 x 12	4000
SBI35SL-R	34	26	80	14 x 9 x 12	4000
SBI45SL-R	45	32	105	20 x 14 x 17	4000
SBI55SL-R	53	38	120	23 x 16 x 20	4000
SBI65SL-R	63	53	150	26 x 18 x 22	4000

Designation	Hole Pitch (P)
SBI15SL-R	60
SBI20SL-R	60
SBI25SL-R	60
SBI30SL-R	80
SBI35SL-R	80
SBI45SL-R	105
SBI55SL-R	120
SBI65SL-R	150

Block Dimensions



Designation	Block Length (L)	System Width (W)	L1	h2	W2
SBI15SL-R	63.8	34	45.2	25	9.5
SBI20SL-R	78.8	44	56.8	25.4	12
SBI25SL-R	92	48	70	34.5	12.5
SBI30SL-R	107.6	60	79.6	38	16
SBI35SL-R	124.6	70	94.6	47.5	18
SBI45SL-R	142	86	108	61	20.5
SBI55SL-R	172.4	100	131	68	23.5
SBI65SL-R	219.8	126	170.4	71	31.5

Designation	S1	E	S2	N3	N1	N2
SBI15SL-R	8.5	5.5	7.8	3.8	M4x0.7	Ø 3.5
SBI20SL-R	6	12	5.8	5	M6x0.75	Ø 3.5
SBI25SL-R	10	12	9	5	M6x0.75	Ø 3.5
SBI30SL-R	11.5	12	10.8	5	M6x0.75	Ø 5.7
SBI35SL-R	15	12	15	6	M6x0.75	Ø 5.7
SBI45SL-R	20.5	13.5	19.3	6.5	PT1/8	Ø 5.7
SBI55SL-R	22	13	22	8	PT1/8	Ø 8.7
SBI65SL-R	14	13	14	10	PT1/8	Ø 8.7

Designation	MxDP	H1
SBI15SL-R	M4x5	13
SBI20SL-R	M5x5	16.5
SBI25SL-R	M6x8	20
SBI30SL-R	M8x10	23
SBI35SL-R	M8x10	26
SBI45SL-R	M10x13	32
SBI55SL-R	M12x18	38
SBI65SL-R	M16x16	53