

SBI SLL Raydent

Long standard block without flange. Side nipple, dustproof end seal and self-lubricant container end seal as option.

* S: Bolt size for bottom mounting type of block

Blocks and rails are in Raydent treated material:

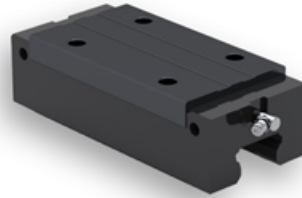
- Corrosion resistant
- Patented black surface
- Balls of stainless steel available as option

Please contact Rollco for more information.

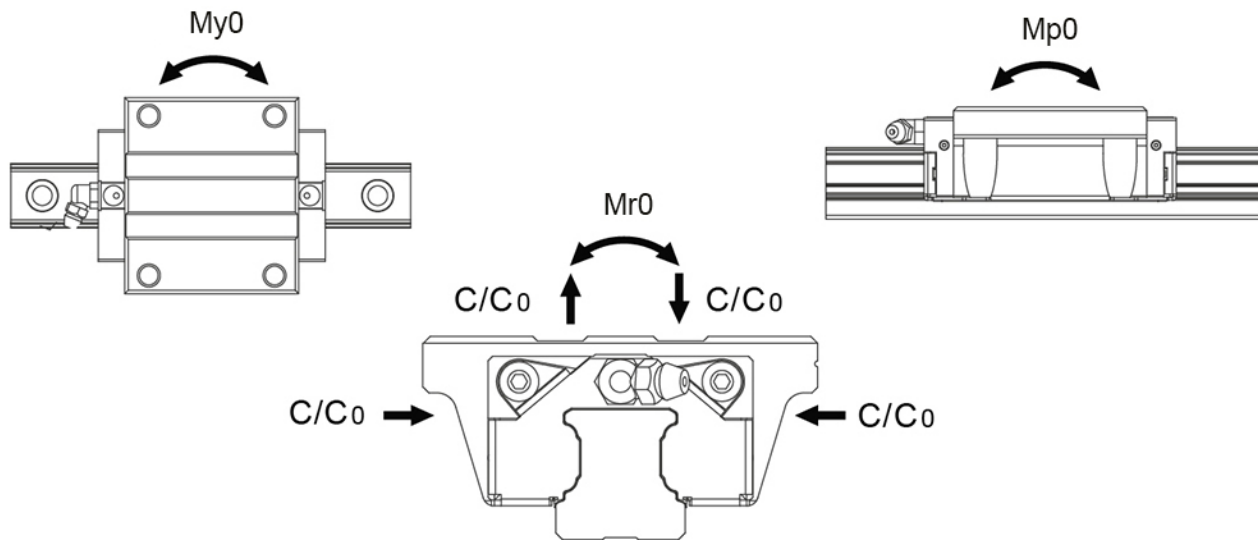
Dimensions in mm.

Lead times in the table below are only indications. Choice of preload and other options will affect lead time. Please contact us for exact delivery time for your request.

Note! Remember to choose Raydent under Surface Treatment when configuring your product.



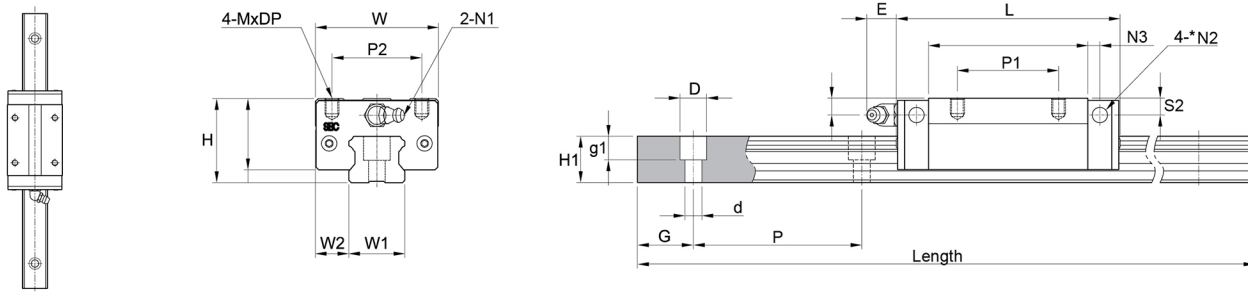
Load and Weight



Designation	Dynamic Load Capacity C (N)	Static Load Capacity C0 (N)	Static Moment Mr0 (Nm)	Static Moment Mp0 (Nm)	Static Moment My0 (Nm)
SBI15SLL-R	17100	31700	210	290	290
SBI20SLL-R	27900	50000	470	560	560
SBI25SLL-R	36700	64400	690	840	840
SBI30SLL-R	51300	84700	1100	1300	1300
SBI35SLL-R	71300	115300	1830	2120	2120
SBI45SLL-R	94800	150500	3210	3140	3140
SBI55SLL-R	147900	224500	5950	4780	4780
SBI65SLL-R	232500	354100	11150	9860	9860

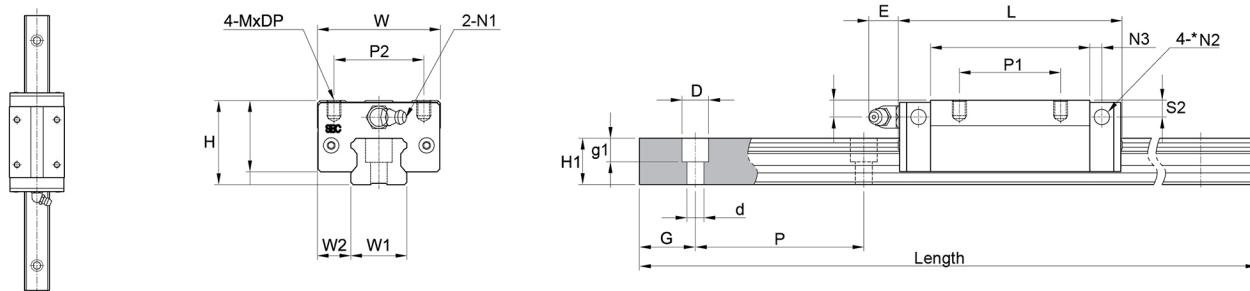
Designation	Dynamic Moment Mr (Nm)	Dynamic Moment Mp (Nm)	Dynamic Moment My (Nm)	Weight Block (g)	Weight Rail (g/m)
SBI15SLL-R	113	156	156	260	1300
SBI20SLL-R	262	312	312	540	2200
SBI25SLL-R	393	479	479	850	3000
SBI30SLL-R	666	787	787	1370	4250
SBI35SLL-R	1132	1311	1311	2040	6020
SBI45SLL-R	2022	1978	1978	3690	9770
SBI55SLL-R	3920	3149	3149	5820	13720
SBI65SLL-R	7321	6474	6474	11980	23170

System Dimensions



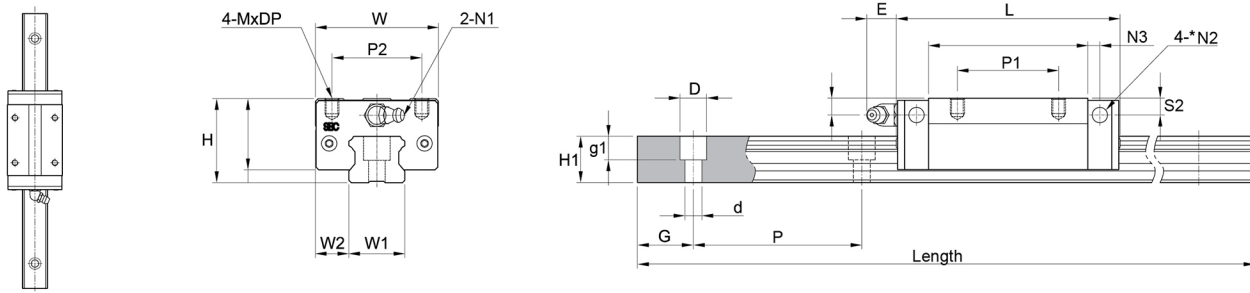
Designation	System Height (H)	System Width (W)	Block Length (L)	W2
SBI15SLL-R	28	34	79.4	9.5
SBI20SLL-R	30	44	96.4	12
SBI25SLL-R	40	48	108	12.5
SBI30SLL-R	45	60	131.6	16
SBI35SLL-R	55	70	152.6	18
SBI45SLL-R	70	86	174	20.5
SBI55SLL-R	80	100	211.8	23.5
SBI65SLL-R	90	126	272.2	31.5

Mounting block hole



Designation	P2	P1
SBI15SLL-R	26	34
SBI20SLL-R	32	50
SBI25SLL-R	35	50
SBI30SLL-R	40	60
SBI35SLL-R	50	72
SBI45SLL-R	60	80
SBI55SLL-R	75	95
SBI65SLL-R	76	120

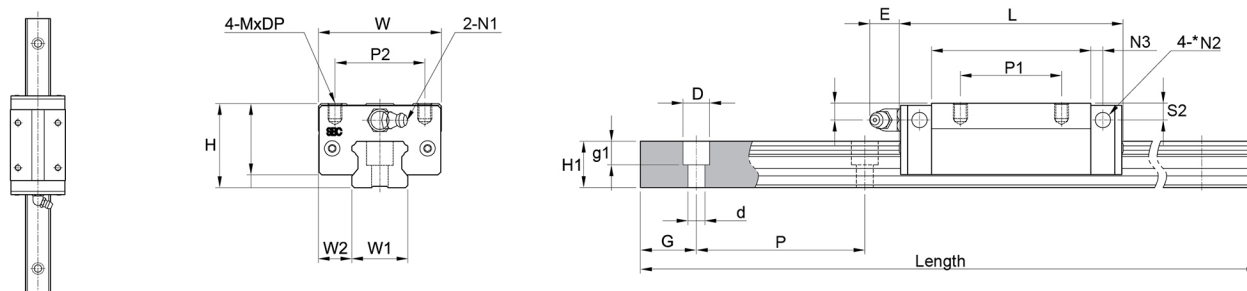
Rail Dimensions



Designation	W1	H1	P	D x d x g1	Length
SBI15SLL-R	15	13	60	7.5 x 4.5 x 5.5	3000
SBI20SLL-R	20	16.5	60	9.5 x 6 x 8.5	4000
SBI25SLL-R	23	20	60	11 x 7 x 9	4000
SBI30SLL-R	28	23	80	14 x 9 x 12	4000
SBI35SLL-R	34	26	80	14 x 9 x 12	4000
SBI45SLL-R	45	32	105	20 x 14 x 17	4000
SBI55SLL-R	53	38	120	23 x 16 x 20	4000
SBI65SLL-R	63	53	150	26 x 18 x 22	4000

Designation	Hole Pitch (P)
SBI15SLL-R	60
SBI20SLL-R	60
SBI25SLL-R	60
SBI30SLL-R	80
SBI35SLL-R	80
SBI45SLL-R	105
SBI55SLL-R	120
SBI65SLL-R	150

Block Dimensions



Designation	Block Length (L)	System Width (W)	L1	h2	W2
SBI15SLL-R	79.4	34	60.8	25	9.5
SBI20SLL-R	96.4	44	74.4	25.4	12
SBI25SLL-R	108	48	86	34.5	12.5
SBI30SLL-R	131.6	60	103.6	38	16
SBI35SLL-R	152.6	70	122.6	47.5	18
SBI45SLL-R	174	86	140	61	20.5
SBI55SLL-R	211.8	100	170.4	58	23.5
SBI65SLL-R	272.2	126	222.8	71	31.5

Designation	S1	E	S2	N3	N1	N2
SBI15SLL-R	8.5	5.5	7.8	3.8	M4x0.7	Ø 3.5
SBI20SLL-R	6	12	5.8	5	M6x0.75	Ø 3.5
SBI25SLL-R	10	12	9	5	M6x0.75	Ø 3.5
SBI30SLL-R	11.5	12	10.8	5	M6x0.75	Ø 5.7
SBI35SLL-R	15	12	15	6	M6x0.75	Ø 5.7
SBI45SLL-R	20.5	13.5	19.3	6.5	PT1/8	Ø 5.7
SBI55SLL-R	22	13	22	8	PT1/8	Ø 8.7
SBI65SLL-R	14	13	14	10	PT1/8	Ø 8.7

Designation	MxDP	H1
SBI15SLL-R	M4x5	13
SBI20SLL-R	M5x5	16.5
SBI25SLL-R	M6x8	20
SBI30SLL-R	M8x10	23
SBI35SLL-R	M8x10	26
SBI45SLL-R	M10x13	32
SBI55SLL-R	M12x18	38
SBI65SLL-R	M16x16	53