

Flanged Block Type FNS

This light-weight flanged runner block is designed for cost-effective applications such as assembly and handling processes. Mounting dimensions are identical to those of the steel guiding rails and in accordance to DIN 645-1, which makes them interchangeable and replaceable.

The runner block has a lateral abutment edge and can then be screwed from above or below. Runner block consists of an aluminium alloy with a tensile strength of 350N/mm², balls and running tracks of hardened stainless steel, X46Cr13 (1.4034). All others parts are made of POM. The carriage is pre-lubricated and has standard seal units, which can be replaced.

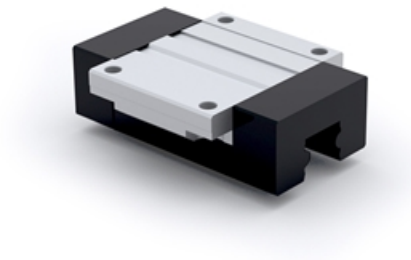
Note!

Determination of the dynamic load capacities and torques is based on a travel life of 100.000 m. Due to the mechanical operations of guide rails and runner block with their different materials, is not possible to clearly indicate a static load rating. In this case never exceed Max permissible load or Static moment Mr0. Otherwise malfunction or damage may occur.

See technical information regarding Lube units.

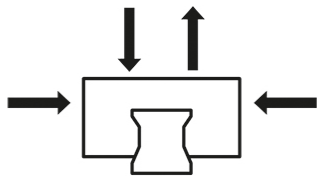
Dimensions in mm.

Lead times in the table below are only indications. Choice of options will affect lead time. Please contact us for exact delivery time for your request.

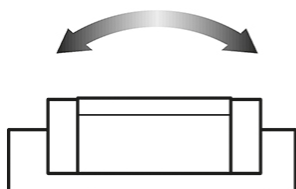
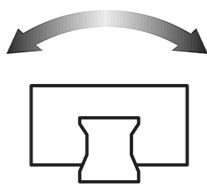
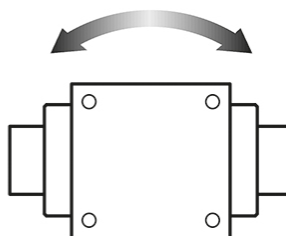


General Data

Dynamic load capacity



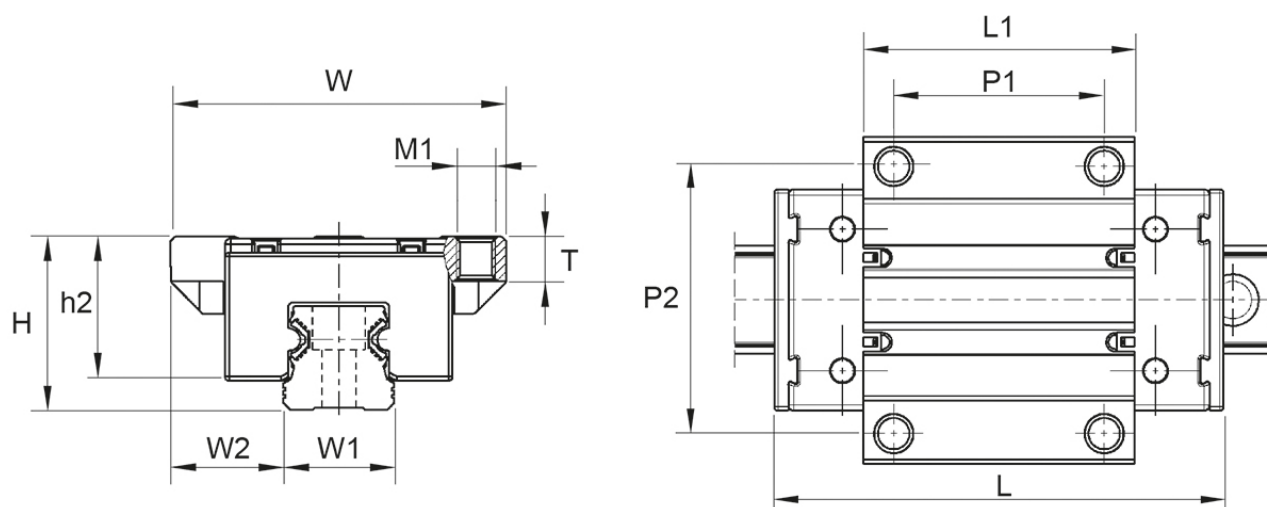
Moment

 M_r / M_{r0}

 M_p / M_{p0}

 M_y / M_{y0}


| Designation | Dynamic Load Capacity C (N) | Static Moment M_{r0} (Nm) | Static Moment M_{p0} (Nm) | Static Moment M_{y0} (Nm) | Dynamic Moment M_r (Nm) |
|--------------|-----------------------------|-----------------------------|-----------------------------|-----------------------------|---------------------------|
| FNS15 | 5000 | 14 | 12 | 12 | 36 |
| FNS20 | 11000 | 40 | 35 | 35 | 101 |
| FNS25 | 16000 | 66 | 59 | 59 | 165 |

| Designation | Dynamic Moment M_p (Nm) | Dynamic Moment M_y (Nm) | Weight Block (kg) | Max. Permissible Load F_{max} (N) |
|--------------|---------------------------|---------------------------|-------------------|-------------------------------------|
| FNS15 | 29 | 29 | 0.08 | 2000 |
| FNS20 | 89 | 89 | 0.18 | 4400 |
| FNS25 | 147 | 147 | 0.26 | 6400 |

Dimensions



| Designation | L | H | W | L1 | h2 | W1 | W2 | T | M1 |
|--------------|------|----|----|------|------|----|------|-----|----|
| FNS15 | 64 | 24 | 47 | 37.8 | 19.8 | 15 | 16 | 6 | M5 |
| FNS20 | 85.9 | 30 | 63 | 51.5 | 24.7 | 20 | 21.5 | 8 | M6 |
| FNS25 | 96 | 36 | 70 | 58 | 29.9 | 23 | 23.5 | 9.3 | M8 |

| Designation | P1 | P2 |
|--------------|----|----|
| FNS15 | 30 | 38 |
| FNS20 | 40 | 53 |
| FNS25 | 45 | 57 |