

## Narrow Block Type GNS

This light-weight narrow runner block corresponds to the structure of the flanged runner block from the previous page. It's only slimmer and designed for mounting from above. The mounting dimensions are also identical to the steel guiding rails and in accordance to DIN 645-1. In this way you can easily change the installed constructions.

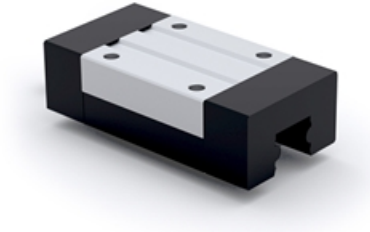
### Note!

Determination of the dynamic load capacities and torques is based on a travel life of 100.000 m. Due to the mechanical operations of guide rails and runner block with their different materials, is not possible to clearly indicate a static load rating. In this case never exceed Max permissible load or Static moment  $M_{r0}$ . Otherwise malfunction or damage may occur.

See technical information regarding Lube units.

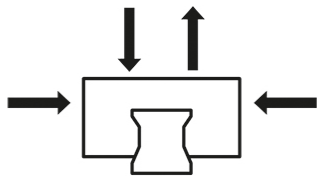
Dimensions in mm.

Lead times in the table below are only indications. Choice of options will affect lead time. Please contact us for exact delivery time for your request.

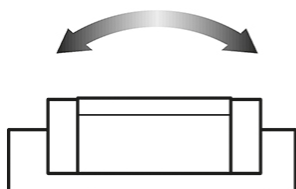
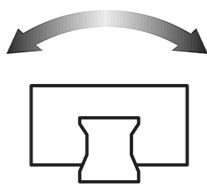
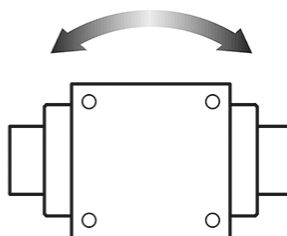


## General Data

### Dynamic load capacity



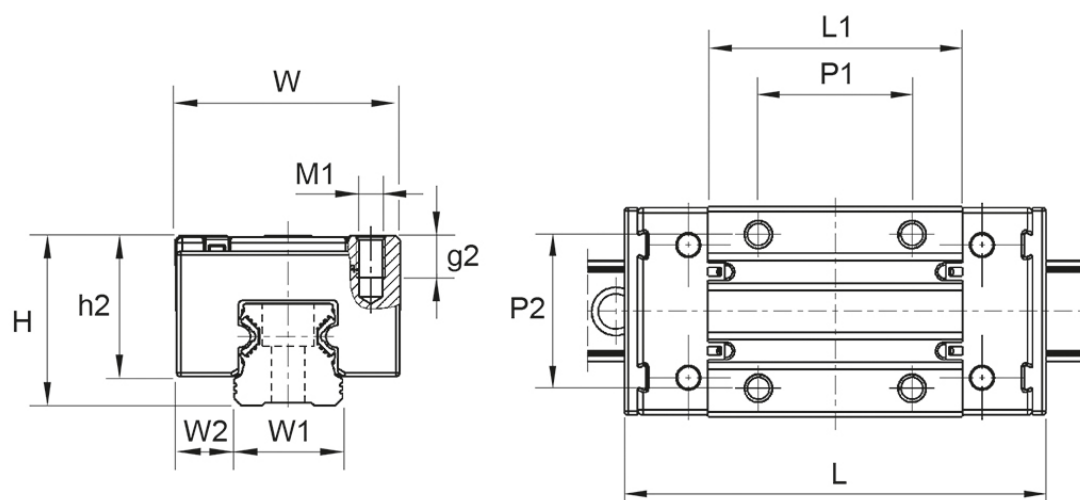
### Moment

 $M_r / M_{r0}$ 

 $M_p / M_{p0}$ 

 $M_y / M_{y0}$ 


Designation	Dynamic Load Capacity C (N)	Static Moment $M_{r0}$ (Nm)	Static Moment $M_{p0}$ (Nm)	Static Moment $M_{y0}$ (Nm)	Dynamic Moment $M_r$ (Nm)
<b>GNS15</b>	5000	14	12	12	36
<b>GNS20</b>	11000	40	35	35	101
<b>GNS25</b>	16000	66	59	59	165

Designation	Dynamic Moment $M_p$ (Nm)	Dynamic Moment $M_y$ (Nm)	Weight Block (kg)	Max. Permissible Load $F_{max}$ (N)
<b>GNS15</b>	29	29	0.07	2000
<b>GNS20</b>	89	89	0.15	4400
<b>GNS25</b>	147	147	0.22	6400

## Dimensions



Designation	L	H	W	L1	h2	W1	W2	T	M1
<b>GNS15</b>	64	24	34	37.8	19.8	15	9.5	-	M4
<b>GNS20</b>	85.9	30	44	51.5	24.7	20	12	7.5	M5
<b>GNS25</b>	96	36	48	58	29.9	23	12.5	9	M6

Designation	g2	P1	P2
<b>GNS15</b>	6	26	26
<b>GNS20</b>	-	36	32
<b>GNS25</b>	-	35	35