

## XUP---.0700

- Extra sustainable
- Extra exact
- Extra strong
- Extra long-lasting
- Chamber dimension tolerance 0,2 mm
- Max. loading pressure 1060 Mpa
- Elastic limit  $\geq$  550 Mpa
- Tensile strength 700 ... 900 Mpa
- Special machining on request
- Max length in one piece 8,8 m

Ordering example: XUP 070.0700-2800  
U-Profile with inside measurement 74,1 mm, length 2800 mm

Dimensions in mm.

**Material:** 25 MnV5mod with plenty more load capacity

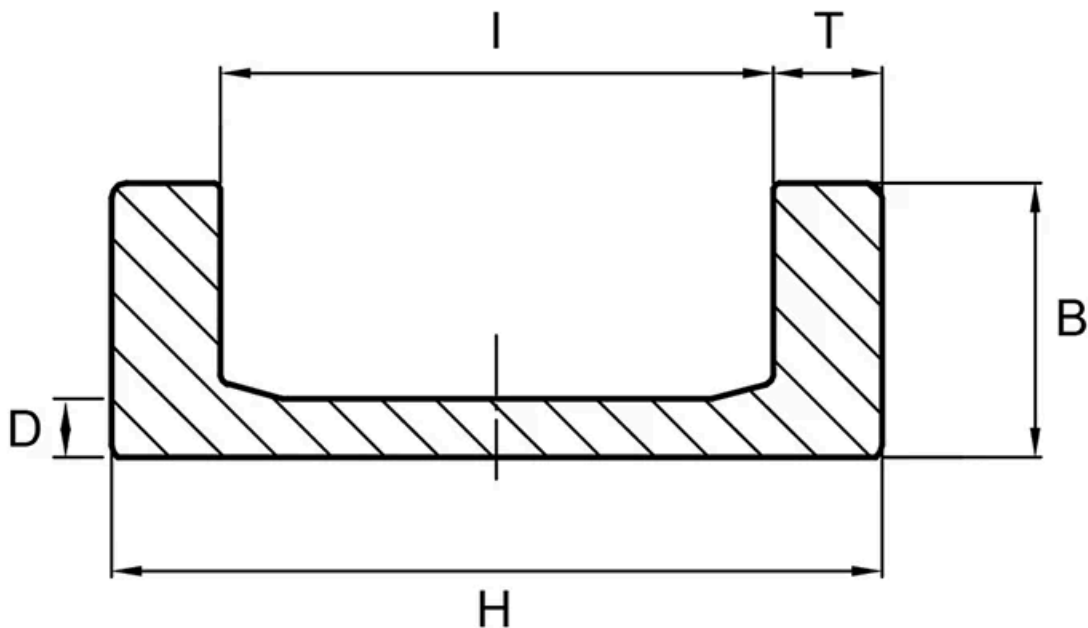
**Sizes Available:** 60; 70; 90; 110; 150



## General Data

Designation	Weight (kg/m)
XUP060.0700	9.82
XUP070.0700	13.97
XUP090.0700	27.65
XUP110.0700	34.77
XUP150.0700	50.99

## Dimensions



Designation	B	D	H	I	T
XUP060.0700	36	7 ±0.5	86.5	65.8 ±0.1	10.3 ±0.5
XUP070.0700	40 ±0.8	7.7 ±0.5	103.2	74.1 ±0.1	14.5 ±0.5
XUP090.0700	53 ±0.5	12.7 ±0.5	135.4	92.7 ±0.1	21.3 ±0.5
XUP110.0700	61.2 ±0.8	14 ±0.5	157.2	111.7 ±0.1	22.7 ±0.5
XUP150.0700	71.2 ±0.8	19.4 ±0.5	201.5	153.4 ±0.1	24 ±0.5