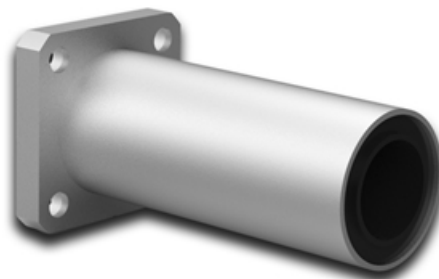


## LMEK...LUU

Dimensions in mm.  
Other types available on request.

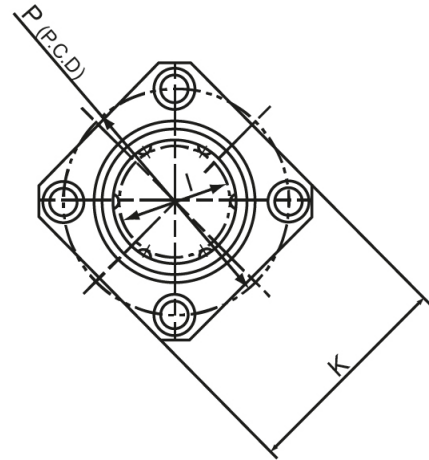
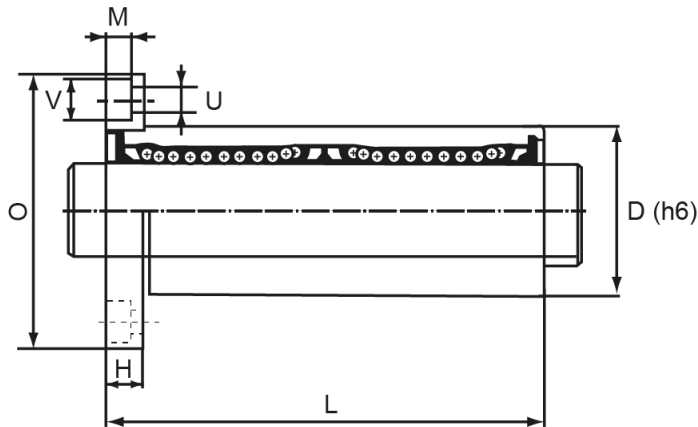
**Material:** 100Cr6



## General Data

Designation	Dynamic Load Capacity (N)	Static Load Capacity (N)	Number Of Ball Rows
LMEK12LUU	657	1200	4
LMEK16LUU	1230	2350	5
LMEK20LUU	1400	2750	5
LMEK25LUU	1560	3140	6
LMEK30LUU	2490	5490	6
LMEK40LUU	3430	8040	6
LMEK50LUU	6200	16220	6
LMEK60LUU	7700	20400	6

## Dimensions



Designation	I	D	L	O	H	K	M	P	U
LMEK12LUU	12	22	61	42	6	32	4.4	32	4.5
LMEK16LUU	16	26	68	46	6	35	4.4	36	4.5
LMEK20LUU	20	32	80	54	8	42	5.4	43	5.5
LMEK25LUU	25	40	112	62	8	50	5.4	51	5.5
LMEK30LUU	30	47	123	76	10	60	6.5	62	6.6
LMEK40LUU	40	62	152	98	13	75	8.6	80	9
LMEK50LUU	50	75	192	112	13	88	8.6	94	9
LMEK60LUU	60	90	209	134	18	106	11	112	11

Designation	V
LMEK12LUU	8
LMEK16LUU	8
LMEK20LUU	9.5
LMEK25LUU	9.5
LMEK30LUU	11
LMEK40LUU	14
LMEK50LUU	14
LMEK60LUU	17