

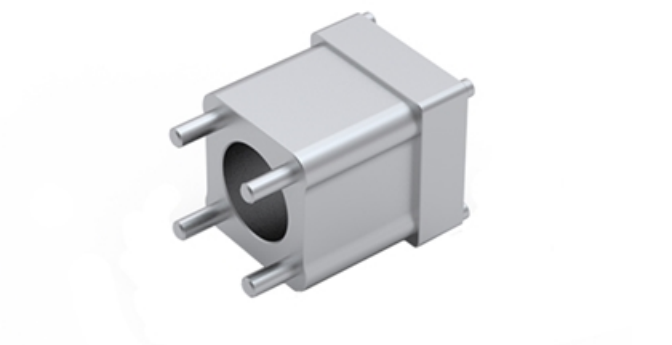
## Motor Adapter with Coupling

Motor adapter for PNCE Electromechanical cylinder.  
Mounting screws are included!

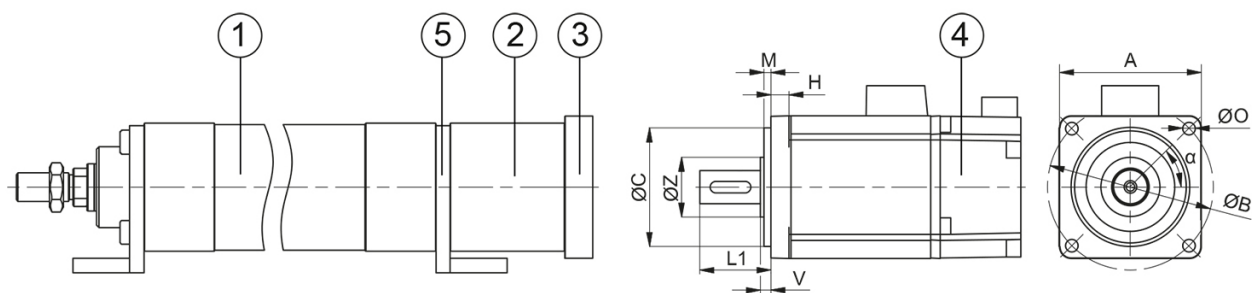
Note: This is an dummy item. The motor flange will be designed after receipt of order and drawing of requested motor type. The geometry of motor flange can be changed in order to adapt it to a requested motor type.

Dimensions in mm.

For order information, see Order Codes.



## General Data



1. PNCE
2. Motor adapter housing
3. Motor flange
4. Motor
5. Mounting attachment HGL/HGLL

Designation	Remark
VK	Measurements depending on motor dimensions. Contact Rollco for further information.