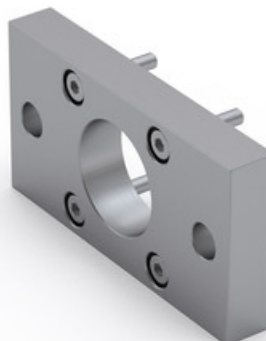


## Flange mounting MAFL

Dimensions in mm.

Mounting screws are included.

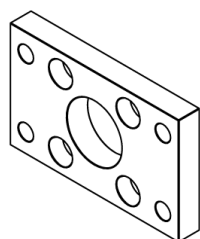
**Material:** Anodized aluminium



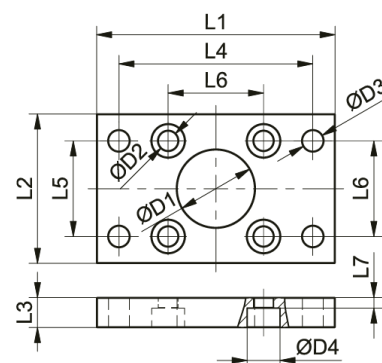
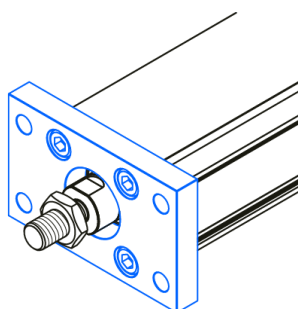
## General Data

| Designation             | Description | Compatible with | Material           | Fmax (N) | Mass (kg) |
|-------------------------|-------------|-----------------|--------------------|----------|-----------|
| <b>MAFL 25 - 108624</b> | MAFL 25     | MCE 25          | Anodized aluminium | F MCE    | 0.03      |
| <b>MAFL 32 - 108625</b> | MAFL 32     | MCE 32          | Anodized aluminium | F MCE    | 0.06      |
| <b>MAFL 45 - 108626</b> | MAFL 45     | MCE 45          | Anodized aluminium | F MCE    | 0.11      |

## Dimensions



Fixed support



| Designation             | L1 | L2 | L3 | L4 | L5 | L6 | L7  | D1 | D2  |
|-------------------------|----|----|----|----|----|----|-----|----|-----|
| <b>MAFL 25 - 108624</b> | 55 | 29 | 8  | 43 | -  | 21 | 5.1 | 18 | 2.9 |
| <b>MAFL 32 - 108625</b> | 70 | 36 | 10 | 55 | -  | 22 | 5.5 | 20 | 4.5 |
| <b>MAFL 45 - 108626</b> | 80 | 50 | 10 | 65 | 32 | 32 | 3.5 | 26 | 6.6 |

| Designation             | D3  | D4  |
|-------------------------|-----|-----|
| <b>MAFL 25 - 108624</b> | 5.5 | 5.5 |
| <b>MAFL 32 - 108625</b> | 6.5 | 8   |
| <b>MAFL 45 - 108626</b> | 7   | 11  |