

PAII-Series

Inline planetary medium-end ECO serie.

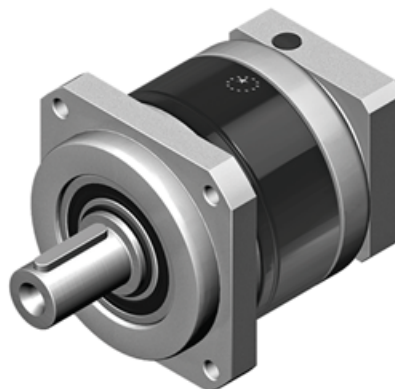
Metric flange output.

The PAII series is an economy flanged output precision planetary gearbox with accuracy down to less than 6 arc minutes. The PII series features lower inertia, lower size and weight, quieter operation, reduced backlash, increased efficiency and greater mounting versatility.

Design your APEX Gear with the Calculation Tool.

Operating Temperature (°C): 0 ~ +90

Protection Class: IP65



General Data

Designation	Remark
PAII 042	Measurements and other technical data depending on configuration of gear. See more information in pdf.
PAII 060	Measurements and other technical data depending on configuration of gear. See more information in pdf.
PAII 090	Measurements and other technical data depending on configuration of gear. See more information in pdf.
PAII 115	Measurements and other technical data depending on configuration of gear. See more information in pdf.
PAII 142	Measurements and other technical data depending on configuration of gear. See more information in pdf.