

## PSII-Series

Right-angle planetary high-end serie.

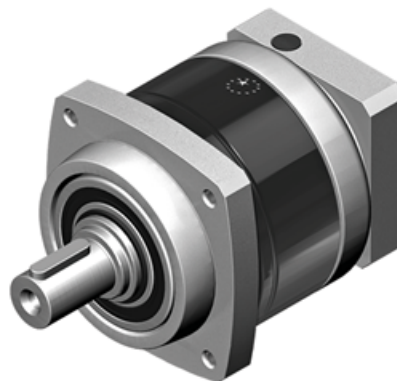
Metric flange output.

The PII series design has been optimized for higher accuracy, lower weight and length, and greater motor mounting versatility. The PSII features an industry standard metric output flange, carbon steel and aluminum construction, precision bonded housings for greater accuracy and faster, more precise assembly, and laser welded pinions for the highest concentricity two part assemblies.

Design your APEX Gear with the Calculation Tool.

**Operating Temperature (°C):** 0 ~ +90

**Protection Class:** IP65



## General Data

Designation	Remark
<b>PSII A</b>	Measurements and other technical data depending on configuration of gear. See more information in pdf.
<b>PSII B</b>	Measurements and other technical data depending on configuration of gear. See more information in pdf.
<b>PSII C</b>	Measurements and other technical data depending on configuration of gear. See more information in pdf.
<b>PSII D</b>	Measurements and other technical data depending on configuration of gear. See more information in pdf.
<b>PSII E</b>	Measurements and other technical data depending on configuration of gear. See more information in pdf.