

## PL-Series

Inline planetary medium-end ECO serie.

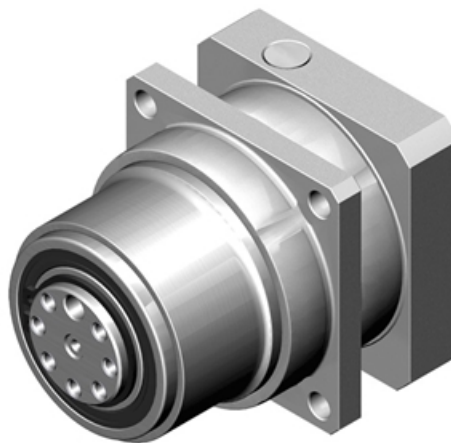
Rotary flange output, with integral belt drive, pulley.

The PL series is an economy rotary flange pulley drive output precision planetary gearbox. Standard profile pulleys are available for all sizes. Accuracy is down to less than 6 arc minutes. The PL series features lower inertia, lower size and weight, quieter operation, reduced backlash, increased efficiency and greater mounting versatility.

Design your APEX Gear with the Calculation Tool.

**Operating Temperature (°C):** -10 ~ +90

**Protection Class:** IP65



## General Data

Designation	Remark
PL 070	Measurements and other technical data depending on configuration of gear. See more information in pdf.
PL 090	Measurements and other technical data depending on configuration of gear. See more information in pdf.
PL 120	Measurements and other technical data depending on configuration of gear. See more information in pdf.