

PD-Series

Inline planetary medium-end ECO serie.

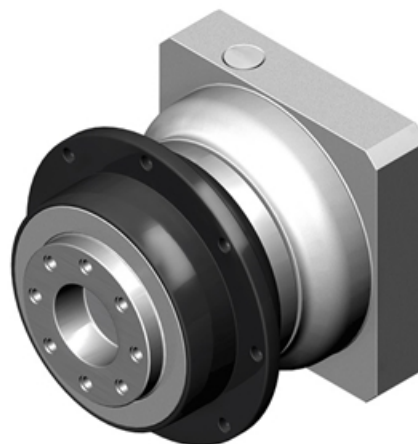
Rotary flange output.

The PD series is an economy rotary flange output precision planetary gearbox with accuracy down to less than 6 arc minutes. The PD series features lower inertia, lower size and weight, quieter operation, reduced backlash, increased efficiency and greater mounting versatility.

Design your APEX Gear with the Calculation Tool.

Operating Temperature (°C): 0 ~ +90

Protection Class: IP65



General Data

Designation	Remark
PD 053	Measurements and other technical data depending on configuration of gear. See more information in pdf.
PD 064	Measurements and other technical data depending on configuration of gear. See more information in pdf.
PD 090	Measurements and other technical data depending on configuration of gear. See more information in pdf.
PD 110	Measurements and other technical data depending on configuration of gear. See more information in pdf.