

Cube Connector

Links up to three aluminium profiles at a right angle, use the caps to cover the holes.

Cube connector material: Die-cast aluminium

Cap material: Plastic (PE)

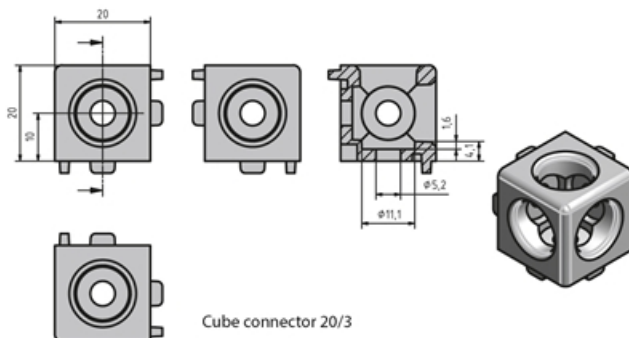
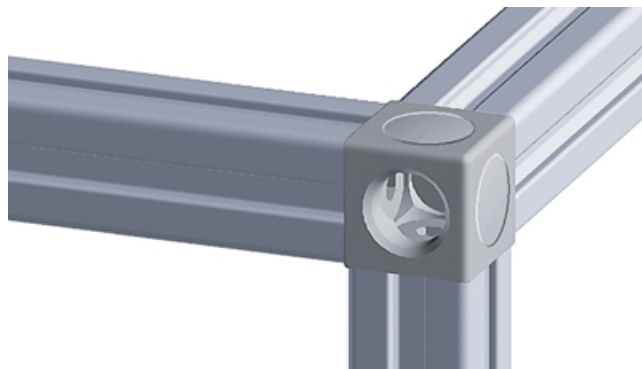
Mounting material WV20: M5 × 14 pan head screw (ISO7380)

Mounting material WV40: M8 × 25 countersunk screw (DIN7991)

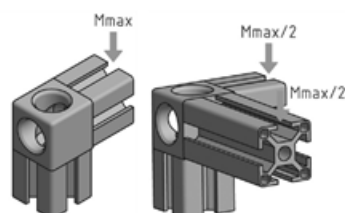
Note: The caps in the sets are not ESD-ready.

System: 20 - Slot 5

Type: Fasteners

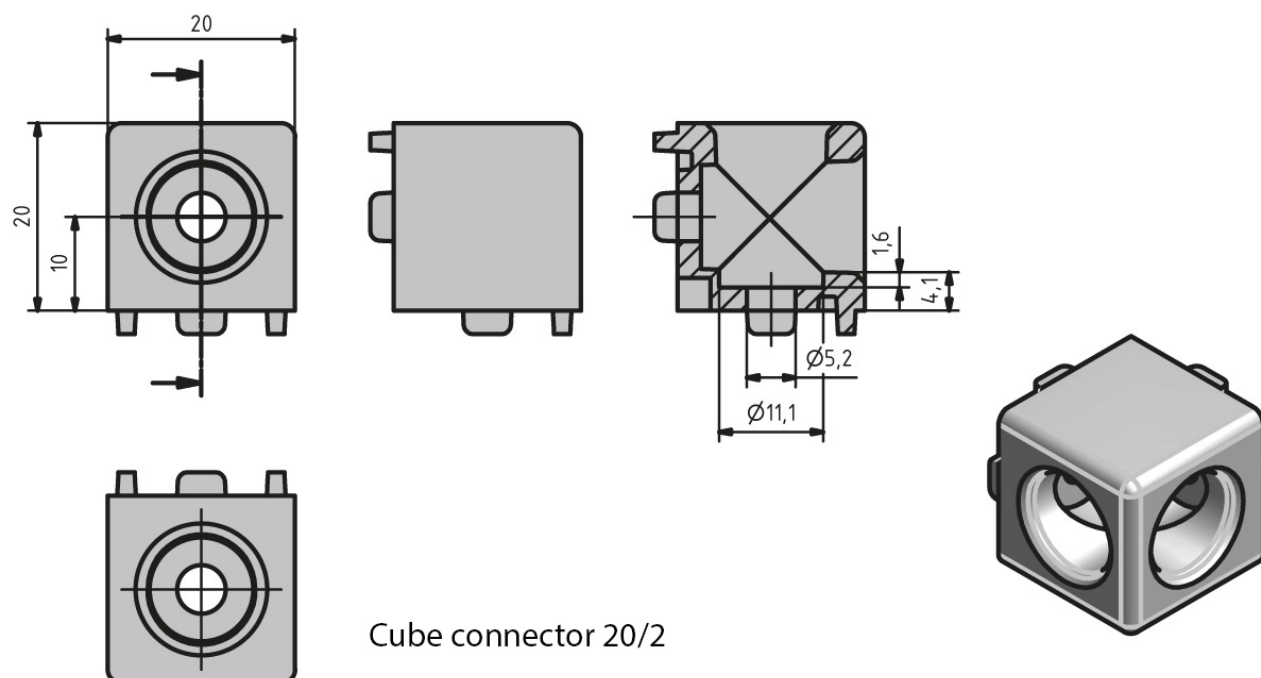


Cube connector 20 loads



| Type | M_{max} (Nm) | $M_{max}/2$ (Nm) |
|---------------------|----------------|------------------|
| Cube connector 20/2 | 15 | |
| Cube connector 20/3 | | 18 |

General Data



Cube connector 20/2

| Designation | Description | System | ESD |
|---------------|--|-------------|-----|
| PV1224 | Cube connector 20/2, uncoated aluminium, 2 black PE caps and mounting kit included | 20 - Slot 5 | Yes |
| PV1225 | Cube connector 20/2, silver coated aluminium, 2 silver PE caps and mounting kit included | 20 - Slot 5 | - |
| PV1226 | Cube connector 20/3, uncoated aluminium, 3 black PE caps and mounting kit included | 20 - Slot 5 | Yes |
| PV1227 | Cube connector 20/3, silver coated aluminium, 3 silver PE caps and mounting kit included | 20 - Slot 5 | - |
| PA1211 | Black cap for cube connector 20 | 20 - Slot 5 | - |
| PA1212 | Silver cap for cube connector 20 | 20 - Slot 5 | - |