

Table of contents

- **Bracket 20 × 20**
- **Steel Angle**
- **Standard Fastener**
- **Universal Connectors**
- **Automatic Connectors**
- **Automatic Butt Connector**
- **T-Nuts, mini**
- **Pivoting Slot Nut, 7.7 × 4.0 mm**
- **Pivoting Slot Nut, 8.0 × 4.2 mm**
- **Uniblock**
- **Tie Plates**
- **Mounting Angle**
- **Angle Joint**
- **Bracket 40 × 40**
- **Corner Angle 20**
- **Floor Bracket 18x140**
- **Articulated Brackets**
- **Universal Butt Connector**
- **Automatic Combination Connector**
- **Cube Connector**
- **Uniblock Spacer**
- **Clamping Pad**
- **Panel Bracket**
- **Earthing Strap**

Bracket 20 × 20

Material: Bracket: Die-cast zinc, uncoated and silver powder coated.

Cap: Black plastic (PA)

Mounting kit: Galvanised steel

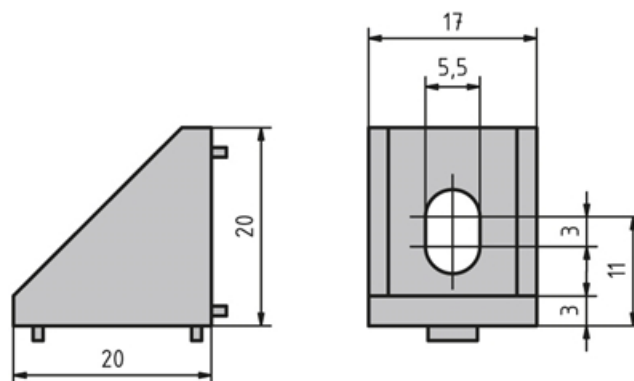
Mounting material:

2× M5 slot 5 slot nuts with step

2× M5 × 8 screw (DIN 6912)

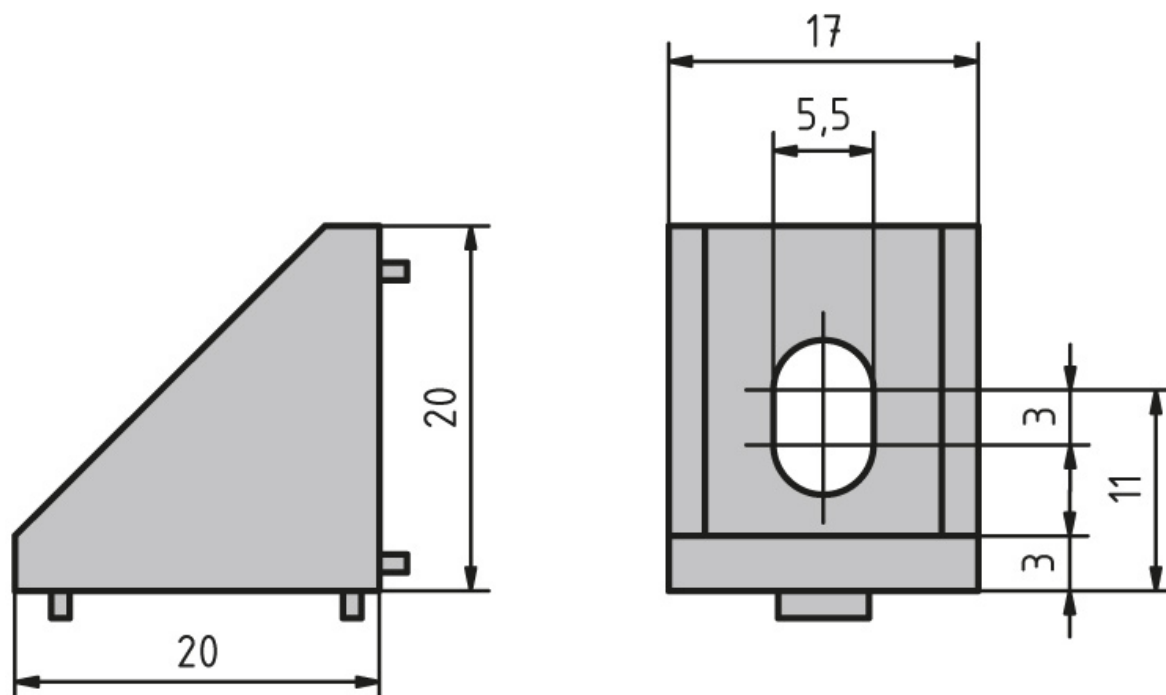
System: 20 - Slot 5

Type: Angles Brackets and Corners; Fasteners



Fmax (N)	Mmax 1 (Nm)	Mmax 2 (Nm)
500	5	15

General Data



Designation	Description	System	ESD
PZ5005	Bracket 20 × 20	20 - Slot 5	-
PZ5006	Bracket 20 × 20 with mounting material and ABDK	20 - Slot 5	Yes
PZ5007	Bracket 20 × 20 silver powder coated with mounting material and ABDK	20 - Slot 5	-
PA1203	Cap 20 × 20	20 - Slot 5	-

Steel Angle

Links two aluminium profiles at a right angle.

Note: To install the ESD-ready angles, use a notched slot nut in order to make a conductive link.

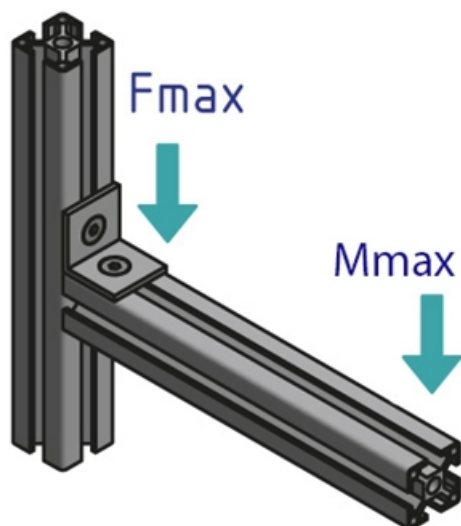
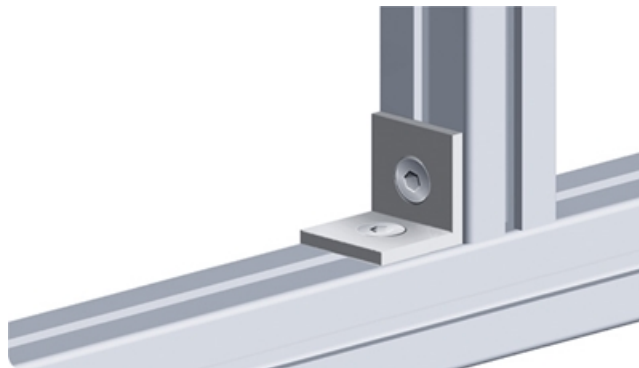
Mounting material On-site construction:

Angle 20: M5 × 8 countersunk screw (DIN7991), M5 slot 5 slot nut

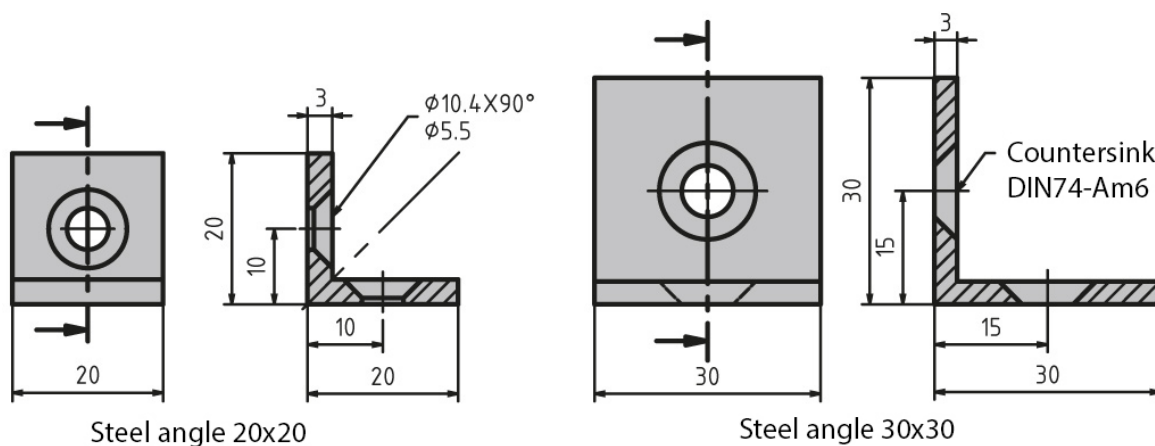
Angle 30: M6 × 10 countersunk screw (DIN7991), M6 slot 6 slot nut

System: 30 - Slot 6; 20 - Slot 5

Type: Angles Brackets and Corners; Fasteners



General Data



Designation	System	Material	ESD	Fmax (N)	Mmax (Nm)
PZ4045	20 - Slot 5	Black powder coated steel	-	600	15
PZ3060	30 - Slot 6	Steel, blue galvanised	Yes	1000	25
PZ3050	30 - Slot 6	Black powder coated steel	-	1000	25

Standard Fastener

Connect two aluminium profiles. Teeth crack the anodised coating and create a reliable and conductive link.

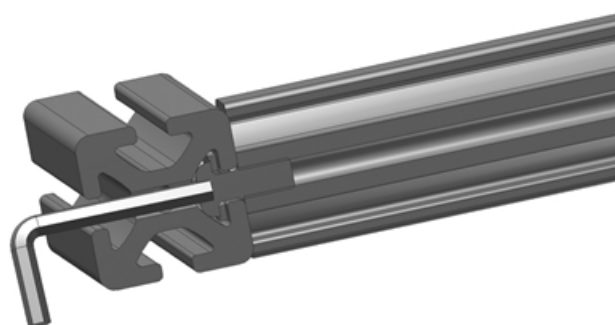
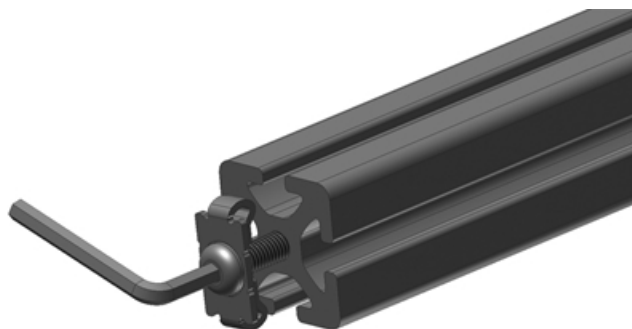
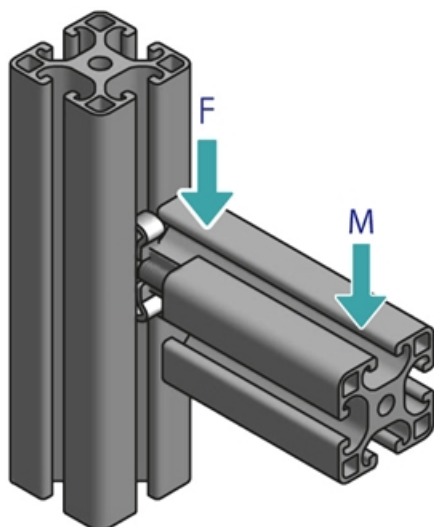
Material Connector: Galvanised or stainless steel

Material Dummy plug: PVC, black

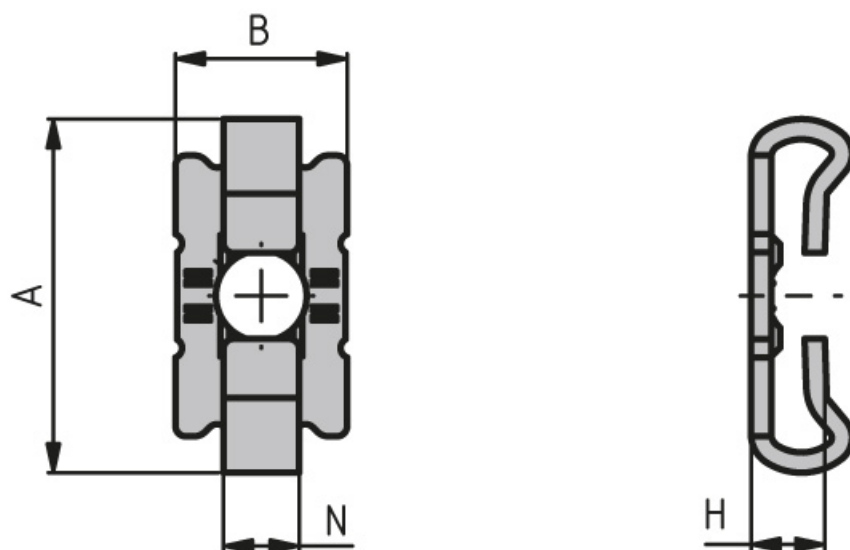
Note: Use the dummy plugs to close the drill hole in closed slots

System: 30 - Slot 6; 20 - Slot 5

Type: Fasteners



General Data



Designation	Description	System	H	M (Nm)	ESD
PV4010	Galvanised screw connector	20 - Slot 5	7.3	7	Yes
PV4025	Galvanised screw connector including ISO 7380 M5 × 12 screw	20 - Slot 5	7.3	7	Yes
PV3025	Galvanised screw connector including ISO 7380 M6 × 14 screw	30 - Slot 6	7.3	30	Yes
PV3020	Galvanised screw connector	30 - Slot 6	7.3	30	Yes
PA3050	Dummy plug for D5.5 Black	-	-	-	-
PA3055	Dummy plug for D5.5 Grey	-	-	-	-
PA4065	Dummy plug for D4.3, Grey	-	-	-	-
PA4066	Dummy plug for D4.3, Black	-	-	-	-

Designation	A x B	F (N)
PV4010	19 x 10	450
PV4025	19 x 10	450
PV3025	27.5 x 13	600
PV3020	27.5 x 13	600
PA3050	-	-
PA3055	-	-
PA4065	-	-
PA4066	-	-

Universal Connectors

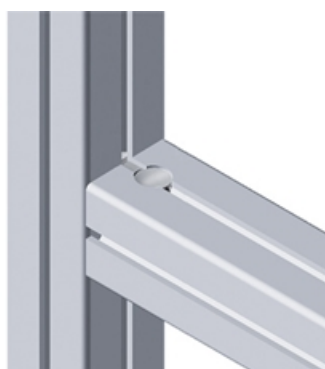
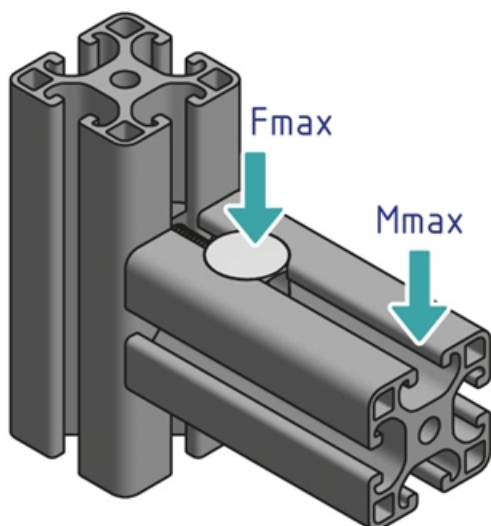
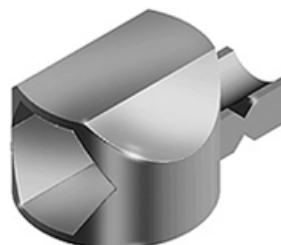
Links two aluminium profiles. Supplied with slot nut and screw.

Material: Galvanised die-cast zinc

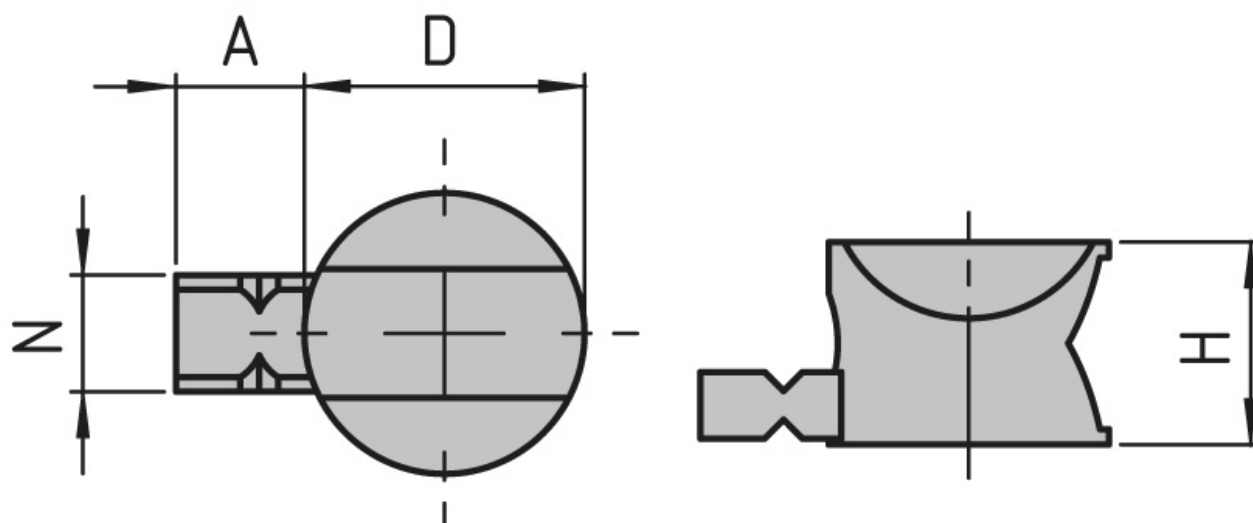
Dummy plug material: PVC, black

System: 30 - Slot 6; 20 - Slot 5

Type: Fasteners



General Data



Designation	Description	System	A	D	H
PV4020	Set of universal connectors with guide lug and 4 mm hole; M4 slot nut and cheese head screw included	20 - Slot 5	5.4	11.8	8.5
PV3015	Set of universal connectors with guide lug and 6 mm hole; M6 slot nut and cheese head screw included	30 - Slot 6	9.3	15.7	12.5

Designation	Fmax (N)	Mmax (Nm)
PV4020	400	12
PV3015	1250	35

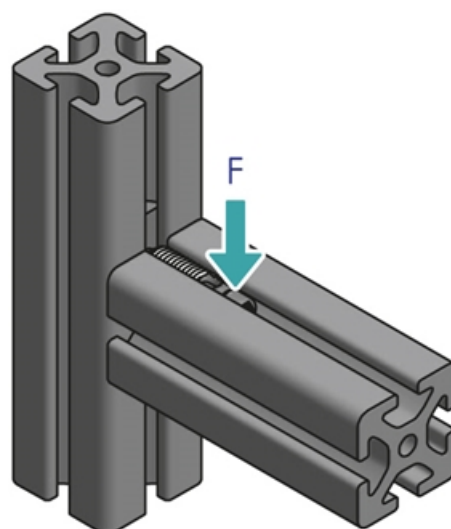
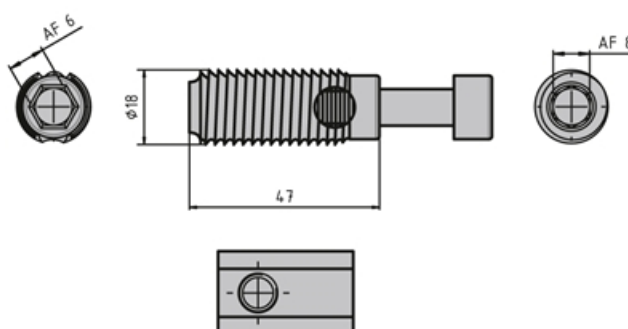
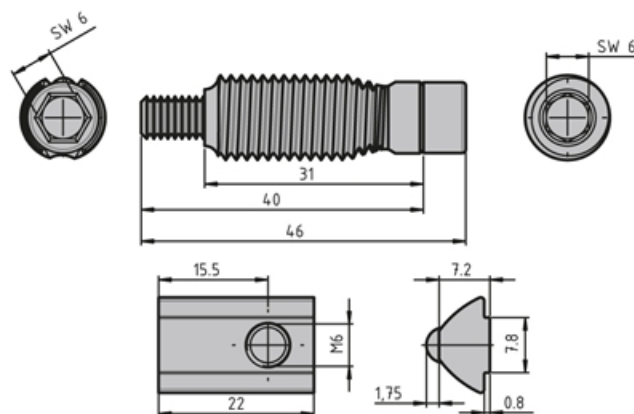
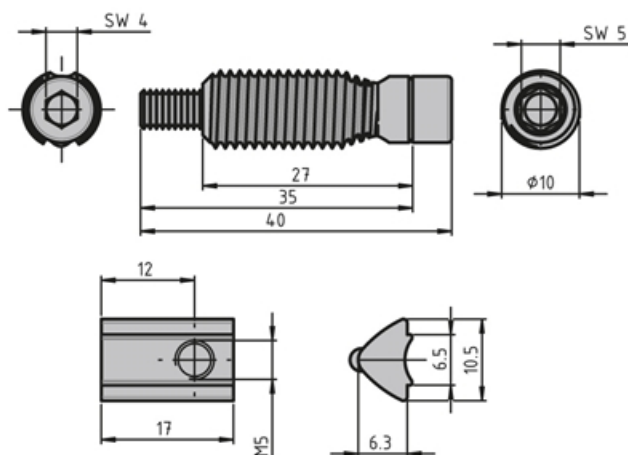
Automatic Connectors

The set of automatic connectors mount quickly and easily because there is no need for modifying the profiles. Universal force-fit link for all profiles from the same series plus the option of moving them afterwards because the connectors are fitted in a single profile only. There is no restriction on installing them in existing constructions later.

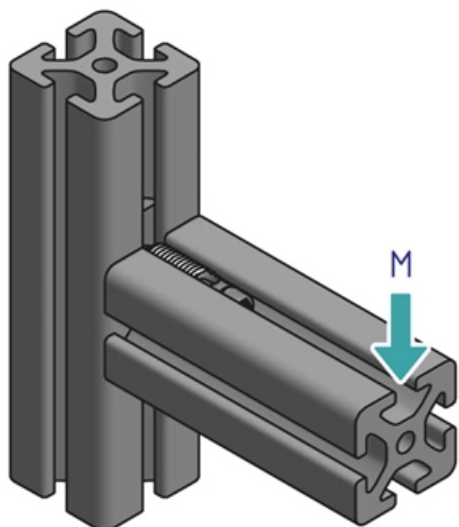
Note: We recommend that you install them in pairs – this is also what the stress data refers to.

System: 30 - Slot 6; 20 - Slot 5

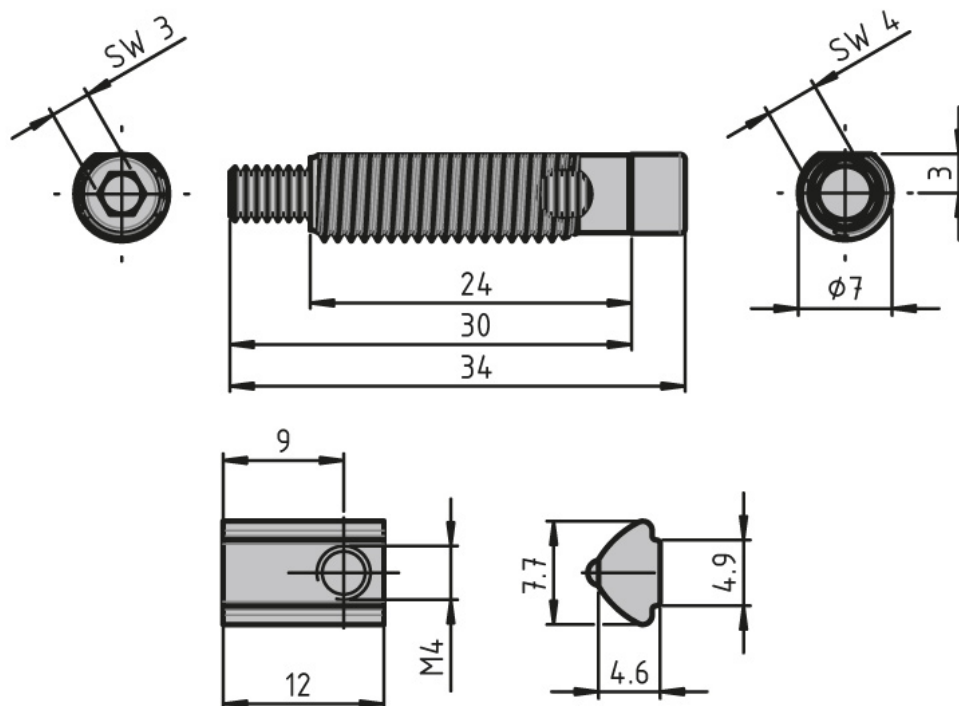
Type: Fasteners



Automatic Connectors



General Data



Designation	Description	System	Material	M (Nm)	F (N)
PV4035	Automatic connector including slot nut with guide step	20 - Slot 5	Galvanised steel	12.5	350
PV1203	Automatic connector including slot nut with guide step	20 - Slot 5	Stainless steel	20	250
PV3045	Automatic connector including slot nut with guide step	30 - Slot 6	Galvanised steel	40	600
PZ3905	Automatic connector including slot nut with guide step	30 - Slot 6	Stainless steel	30	400

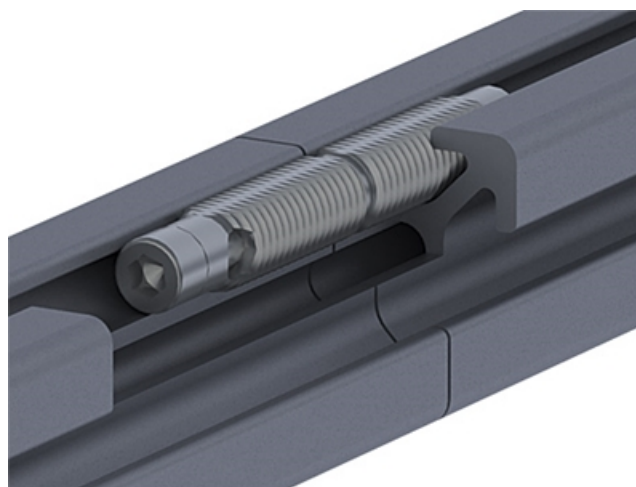
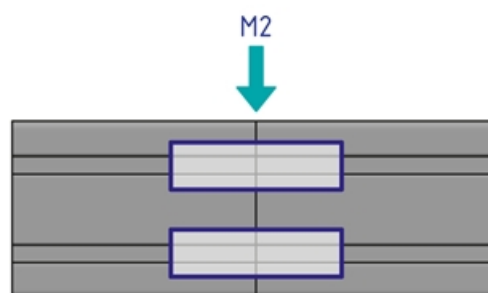
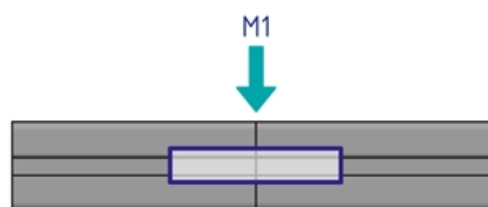
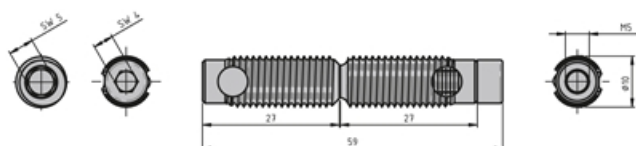
Automatic Butt Connector

Use the automatic butt connector to quickly and easily link the face ends of two profiles from the same series without having to machine the profiles beforehand. Best practice is to use the automatic butt connectors in pairs. You may need several pairs, depending on the size and load on the profiles. Package includes the screw and cutting bush.

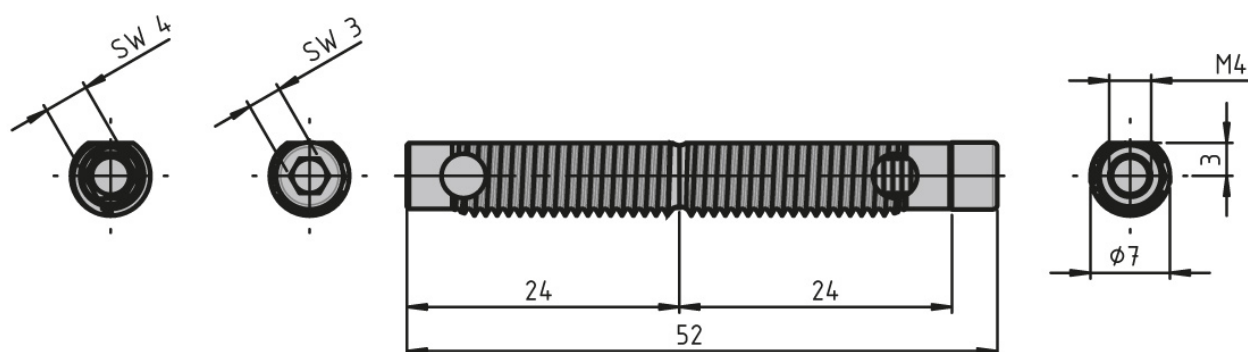
Note: The load values refer to connectors installed in pairs

System: 30 - Slot 6; 20 - Slot 5; 40 - Slot 8

Type: Fasteners



General Data



Designation	Description	System	M (Nm)	F (N)
PV4040	Set of automatic butt connectors	20 - Slot 5	22	1500
PV1209	Set of automatic butt connectors	20 - Slot 5	22	1500
PV3050	Set of automatic butt connectors	30 - Slot 6	45	1800
PV1210	Set of automatic butt connectors	30 - Slot 6	45	1800
PV1105	Set of automatic butt connectors	40 - Slot 8	140 (40x40L) / 170 (40x40)	4500

T-Nuts, mini

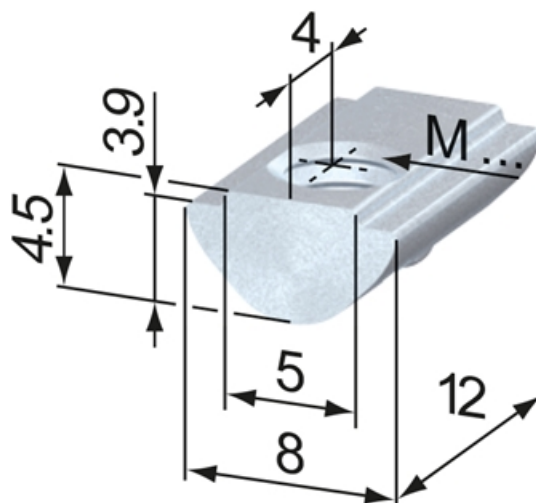
Application:

T-nut for swiveling into the t-slot. Fits into the t-slot at any point. Held in position by a spring-loaded ball. Raised area fits into groove to stop twisting.

Material: Steel, zinc-plated

System: 20 - Slot 5

Type: T-nuts



General Data

Designation	Description	System	Thread	Weight (g)
SV2192V	T-Nuts, mini M4 ball type	20 - Slot 5	M4	2
SV2193V	T-Nuts, mini M5 ball type	20 - Slot 5	M5	2

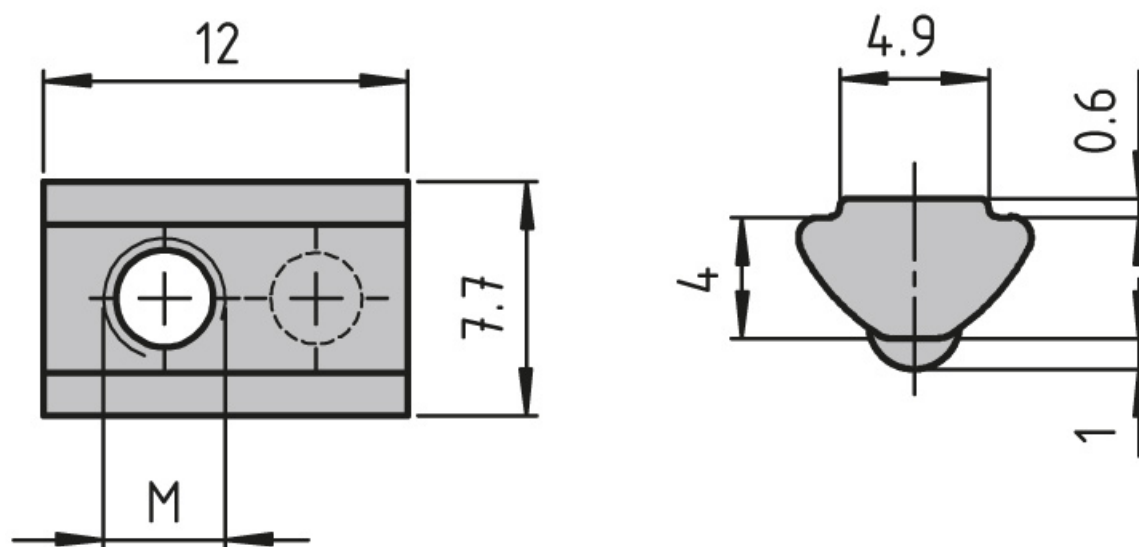
Pivoting Slot Nut, 7.7 × 4.0 mm

System: 20 - Slot 5

Type: T-nuts



General Data



Designation	Description	System	Thread	Fmax (N)
PN4010	Pivoting slot nut, ball spring, step	20 - Slot 5	M3	500
PN4015	Pivoting slot nut, ball spring, step	20 - Slot 5	M4	500
PN4020	Pivoting slot nut, ball spring, step	20 - Slot 5	M5	500
PN2005	Pivoting slot nut profile, step L=1500	20 - Slot 5	-	-

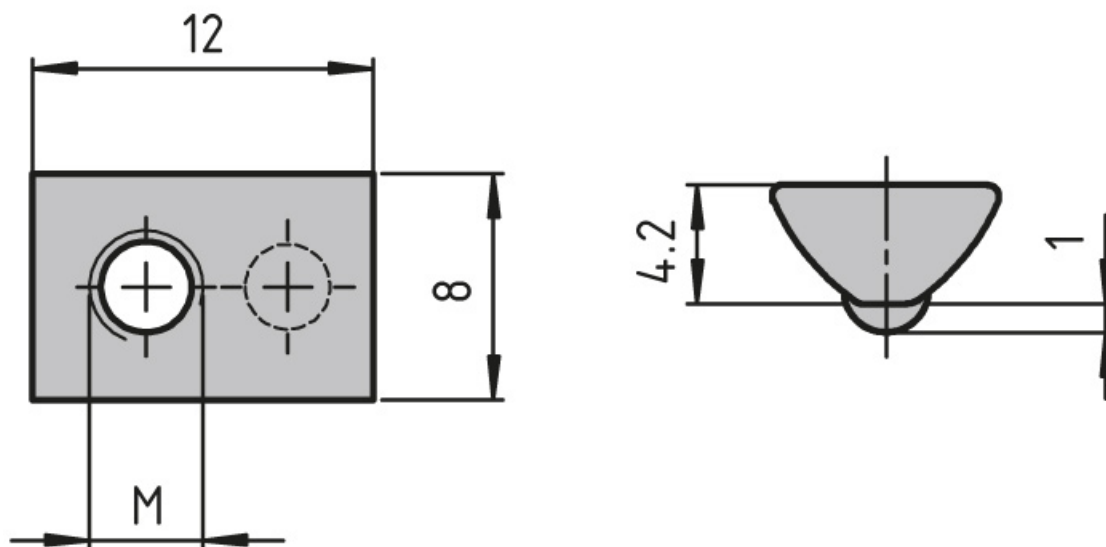
Pivoting Slot Nut, 8.0 × 4.2 mm

System: 20 - Slot 5

Type: T-nuts



General Data



Designation	Description	System	Material	Thread	Fmax (N)
PN4025	Pivoting slot nut, ball spring	20 - Slot 5	Galvanised Steel	M3	500
PN4030	Pivoting slot nut, ball spring	20 - Slot 5	Galvanised Steel	M4	500
PN4035	Pivoting slot nut, ball spring	20 - Slot 5	Galvanised Steel	M5	500
PN2003	Pivoting slot nut, ball spring	20 - Slot 5	Stainless Steel	M4	400
PN2004	Pivoting slot nut, ball spring	20 - Slot 5	Stainless Steel	M5	400
PN4110	Pivoting slot nut profile 8x4,2mm, l=1500 mm	20 - Slot 5	Uncoated Steel	-	-

Uniblock

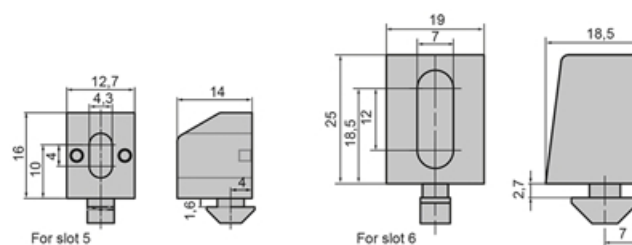
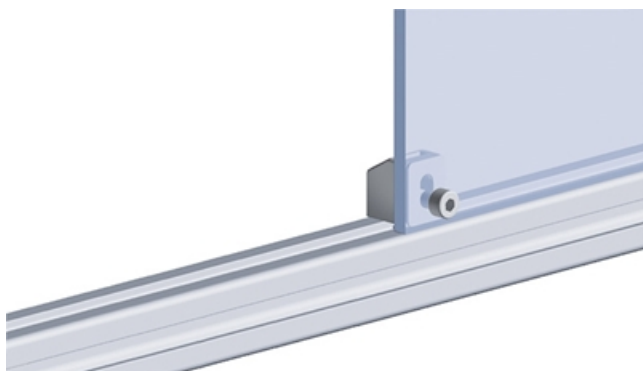
Fastening surface elements to aluminium profiles made easy.

Material: Pad: Plastic (PA), fibreglass-reinforced.

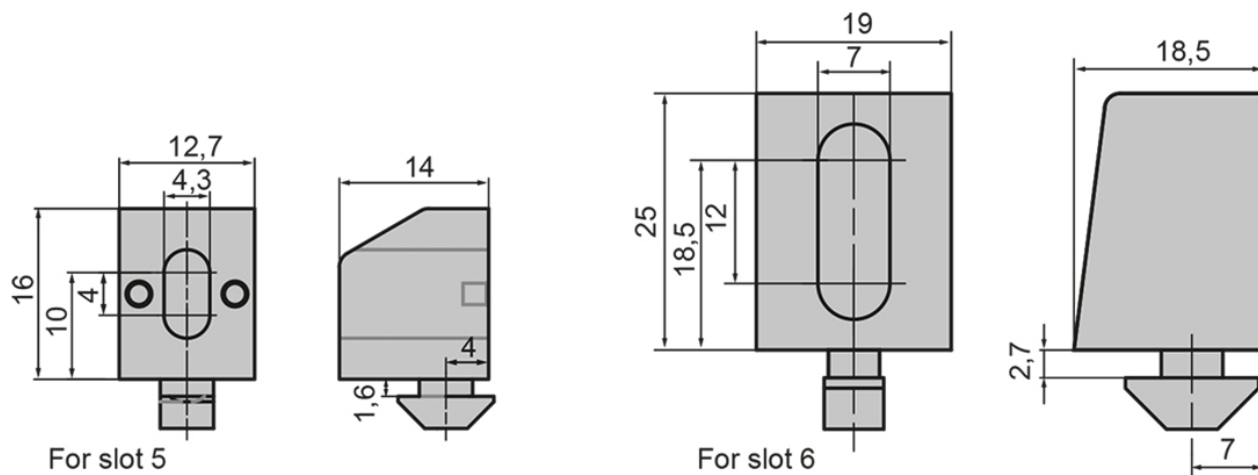
Nut: Galvanised steel

System: 30 - Slot 6; 20 - Slot 5

Type: Fixing Blocks/Fastening Elements



General Data



Designation	Description	System
PZ4090	Uniblock 14 with M4 square nut	20 - Slot 5
PZ5061	Uniblock 18 with M4 square nut	30 - Slot 6
PZ5062	Uniblock 18 with M5 square nut	30 - Slot 6
PZ5063	Uniblock 18 with M6 square nut	30 - Slot 6

Tie Plates

Links two aluminium profiles.

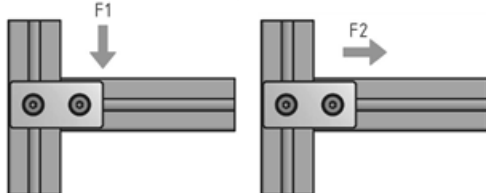
Note: To install the ESD-ready tie plates, use a notched slot nut in order to make a conductive link.

System: 20 - Slot 5; 30 - Slot 6

Type: Angles Brackets and Corners; Fasteners

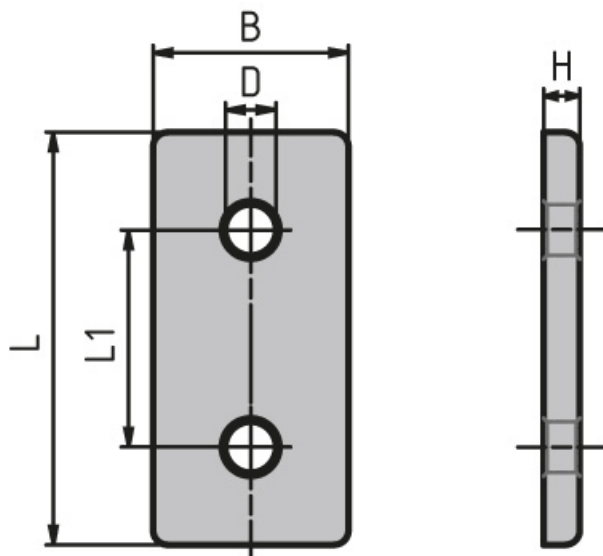


Tie plate loads



Size	F1 (N)	F2 (N)
20x40	250	300
20x80	350	400
30x60	400	550
30x60	700	800
30x60	700	800

General Data



Designation	Description	Material	B	D	H
PV1215	Tie plate 20 × 40 mm	Black powder coated steel	20	5.5	3
PV1216	Tie plate 20 × 40 mm	Nickel-plated aluminium, matt	18	5.5	4
PV1217	Tie plate 20 × 80 mm	Nickel-plated aluminium, matt	18	5.5	5
PV1218	Tie plate 30 × 60 mm	Nickel-plated aluminium, matt	27	7	5
PZ3055	Tie plate 30 × 60 mm	Black powder coated	30	CountersinkDIN74-Am6	3
PV1219	Tie plate 30 × 60 mm	Galvanised steel	30	11	3

Designation	L	ESD	L1	Recommended screw size	Screw Type
PV1215	40	-	20	ISO7380 M5×8	ISO7380 M5×8
PV1216	38	Yes	20	ISO7380 M5×8	ISO7380 M5×8
PV1217	78	Yes	20	ISO7380 M5×8	M6 × 8 (ISO7380)
PV1218	57	-	30	ISO7380 M6×12	ISO7380 M6×12
PZ3055	60	-	30	ISO7991 M6 × 10	ISO7991 M6 × 10
PV1219	60	Yes	30	ISO7380 M6 × 10	ISO7380 M6 × 10

Mounting Angle

Variable angles for mounting components.

Oblong holes provide a wide range of position and angle adjustment. Use up to M6 screws to attach them.

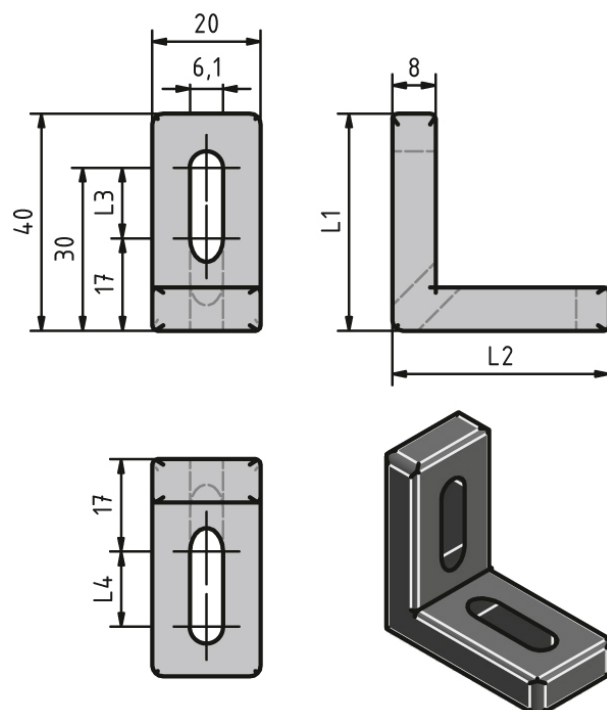
Material: Black die-cast zinc

System: 40 - Slot 8; 30 - Slot 6; 20 - Slot 5

Type: Angles Brackets and Corners; Fasteners



General Data



Designation	L1	L2	L3	L4
PZ1920	40	40	13	13
PZ1925	60	40	33	13
PZ1935	80	40	53	13

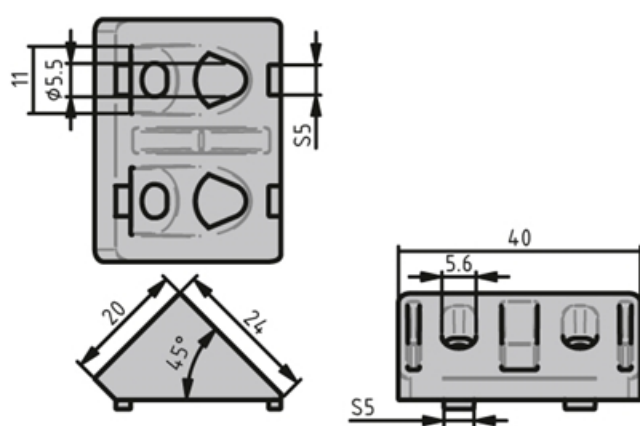
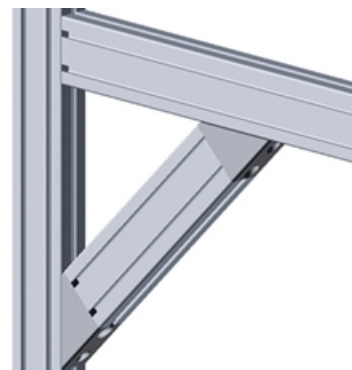
Angle Joint

Easily links two aluminium profiles at a 45° angle using a M8 screw.

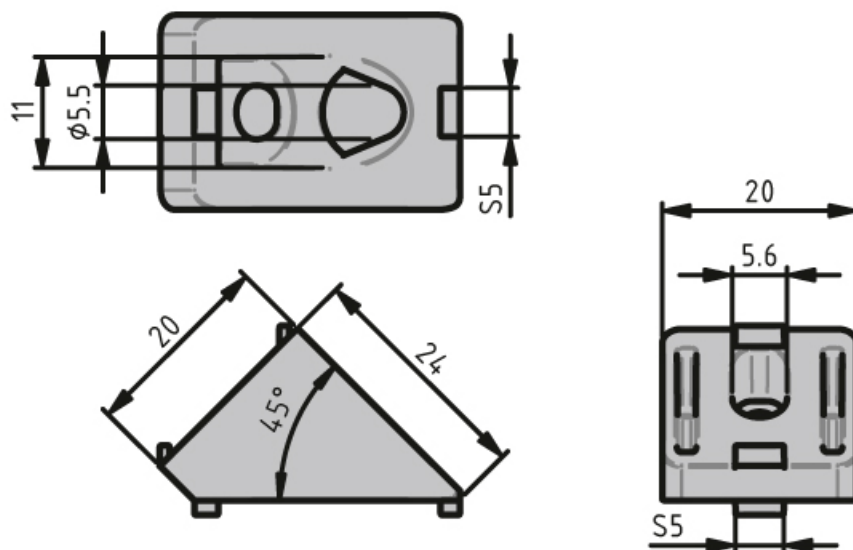
Note: To install the ESD-ready brackets, use a notched slot nut in order to make a conductive link.

System: 20 - Slot 5

Type: Angles Brackets and Corners; Fasteners



General Data



Designation	Description	System	Material	ESD
PV1211	Angle joint 20 45°	20 - Slot 5	Uncoated die-cast zinc	Yes
PV1212	Angle joint 20 45°	20 - Slot 5	Aluminium coloured die-cast zinc	-
PV1213	Angle joint 40/20 45°	20 - Slot 5	Uncoated die-cast zinc	Yes
PV1214	Angle joint 40/20 45°	20 - Slot 5	Aluminium coloured die-cast zinc	-

Bracket 40 × 40

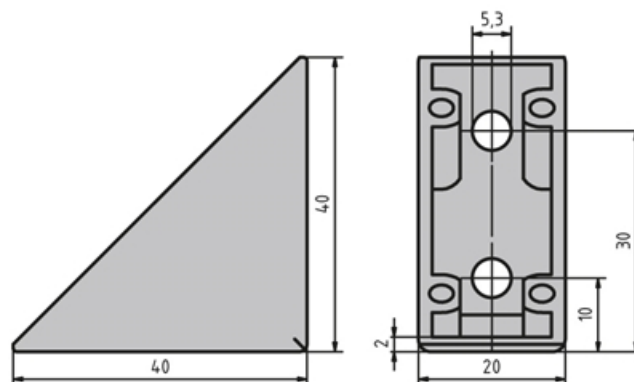
Material: Bracket: Painted die-cast zinc, white aluminium (RAL9005)

Cap: Black plastic (PA)

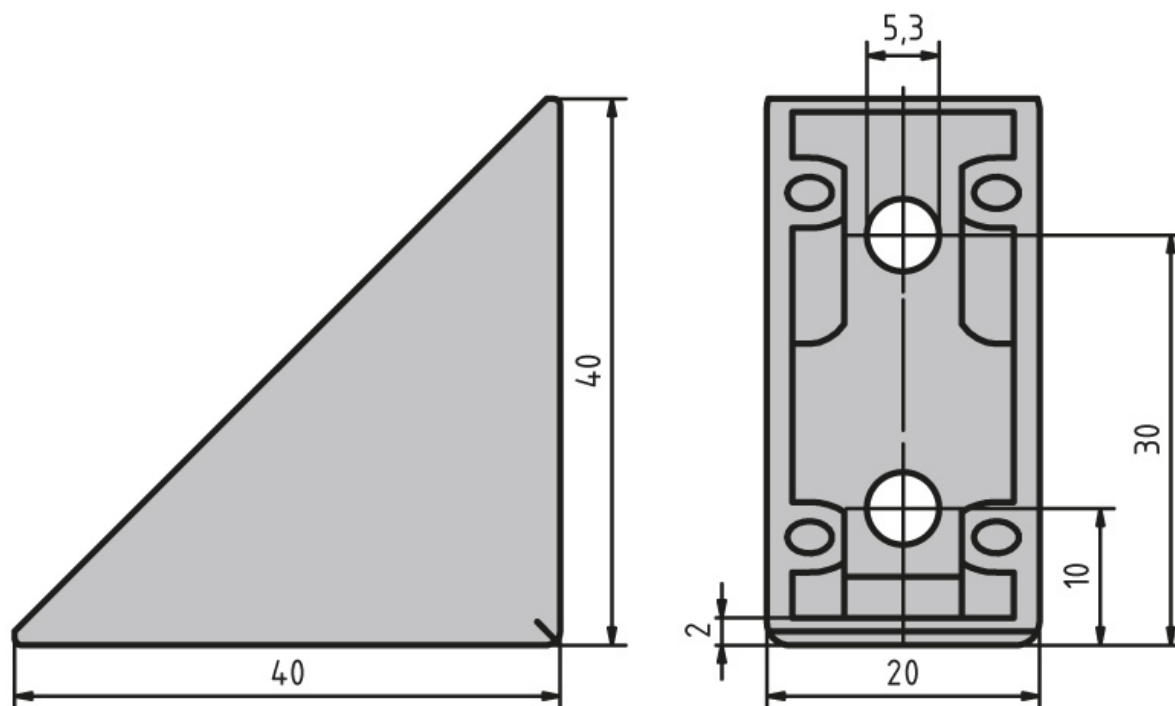
Mounting kit: Galvanised steel

System: 20 - Slot 5

Type: Angles Brackets and Corners; Fasteners



General Data



Designation	Description	System	ESD
PZ5008	Bracket 40 × 40 painted silver white aluminium (RAL9006)	20 - Slot 5	-
PZ5009	Bracket 40 × 40 painted silver white aluminium (RAL9006) plus mounting material and ABDK	20 - Slot 5	-
PA1204	Cap 40 × 40	20 - Slot 5	-

Corner Angle 20

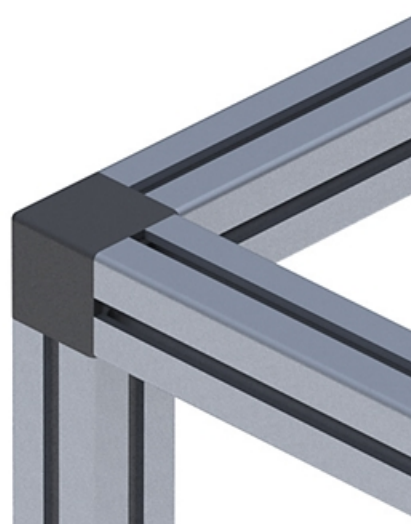
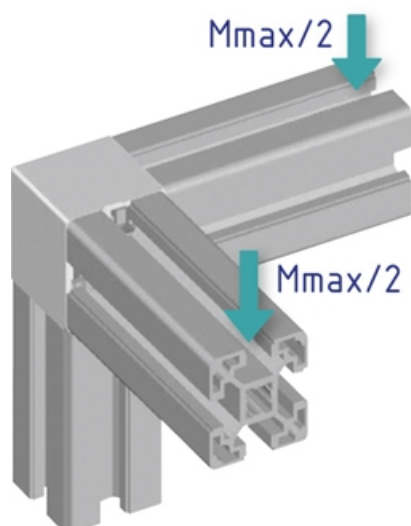
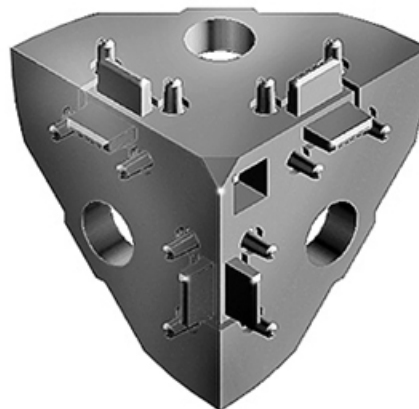
Right-angled links between up to three square or semi-circular profiles of the same cross section. Square or round caps for protection against injury and dirt.

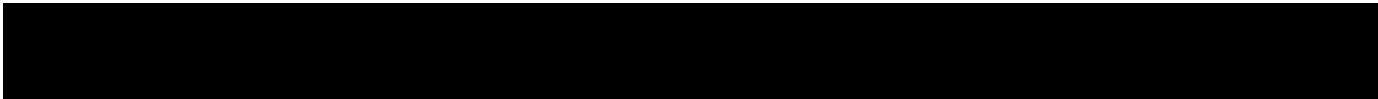
Material: Corner angle: Uncoated die-cast zinc
Caps: plastic (PA).

Note: The caps in the sets are not ESD-ready.

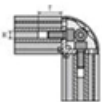
System: 20 - Slot 5

Type: Angles Brackets and Corners; Fasteners



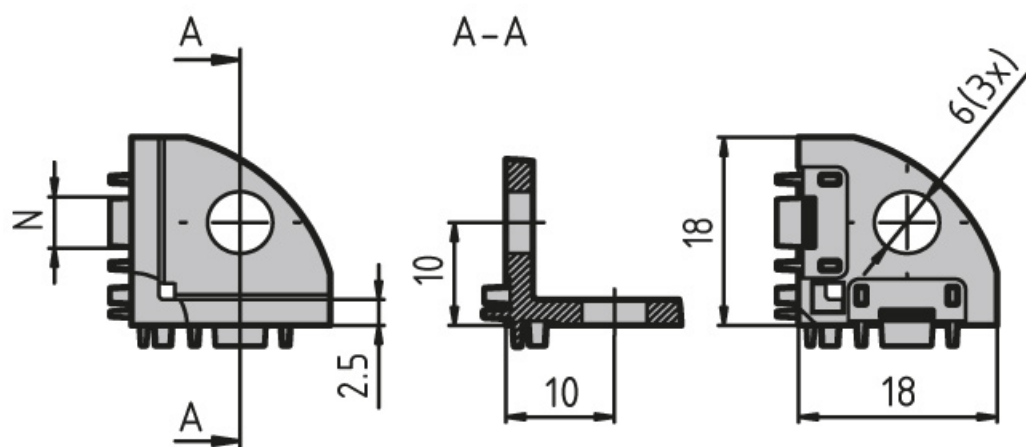


Corner Angle 20



	5	6
Machining of corner angle	Profile 20x20	Profile 30x30
Thread (M)	M5	M5
Depth (T)	25 mm	25 mm

General Data



Designation	Description	System	F (Nm)	ESD
PZ5014	Corner angle 20 including 3 M5 × 12 screws (ISO 7380)	20 - Slot 5	12	Yes
PZ5015	Corner angle 20 including 3 M5 × 12 screws (ISO 7380) and square black cap	20 - Slot 5	12	Yes
PZ5016	Corner angle 20 including 3 M5 × 12 screws (ISO 7380) and round black cap	20 - Slot 5	12	Yes
PA1206	Round black cap	20 - Slot 5	-	-
PA1207	Square black cap	20 - Slot 5	-	-

Floor Bracket 18x140

To securely fix aluminium profiles to the floor.

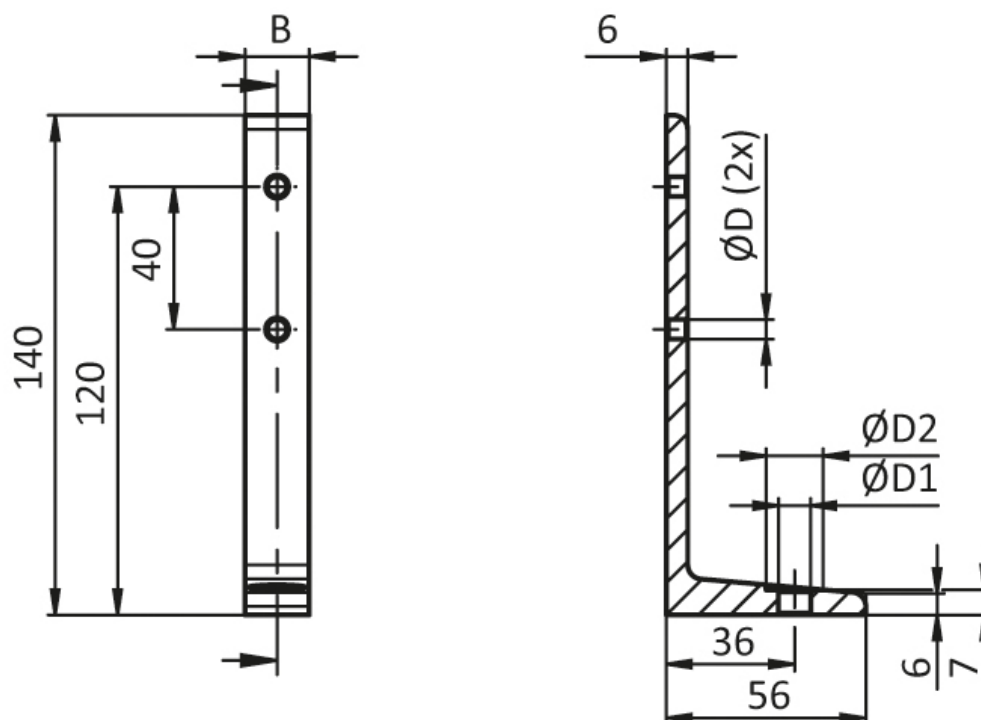
Material: Aluminium

System: 20 - Slot 5

Type: Angles Brackets and Corners; Fasteners



General Data



Designation	Description	System	B	\tilde{A}_D	\tilde{A}_{D1}
PZ5236	Floor Bracket 1 slot version	20 - Slot 5	18	5.5	9

Designation	\tilde{A}_{D2}	Weight (g)
PZ5236	16	57

Articulated Brackets

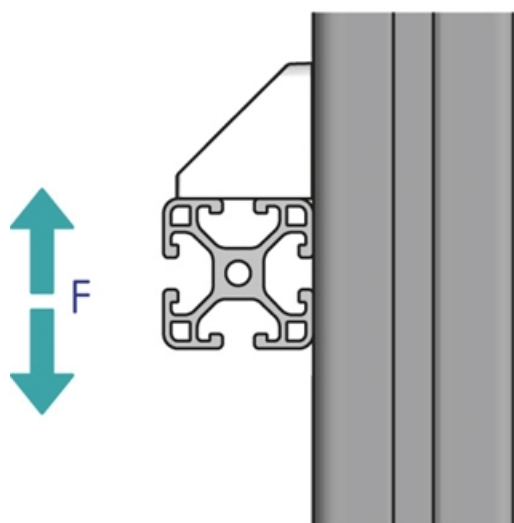
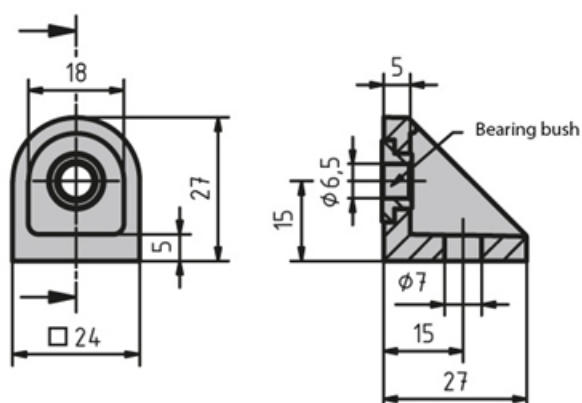
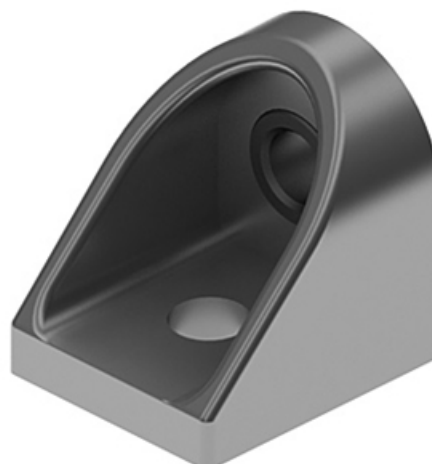
Links two aluminium profiles at various angles.
The bearing bush ensures unrestricted rotation even when mounted.

Material: Die-cast zinc

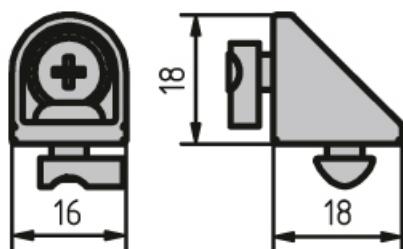
Note: To install the ESD-ready brackets, use a notched slot nut in order to make a conductive link.

System: 30 - Slot 6; 20 - Slot 5

Type: Angles Brackets and Corners; Fasteners



General Data



Designation	Description	ESD	F (N)	Drill hole
PZ4170	Articulated bracket 20, aluminium coloured with M5 slot 5 slot nut, 1× M5 × 8 screw (ISO7380), 1× M5 × 10 flanged fillister head screw, 1× bearing bush	-	-	-
PZ5019	Articulated bracket 30, uncoated	Yes	800	for M6 screw
PZ3085	Articulated bracket 30, aluminium coloured	-	800	for M6 screw

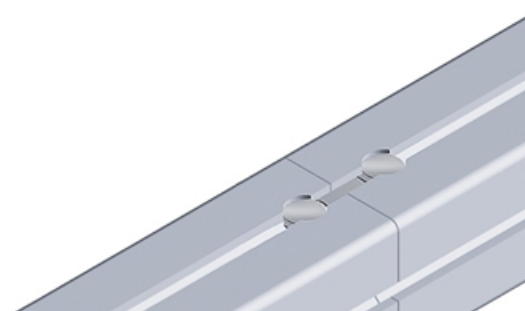
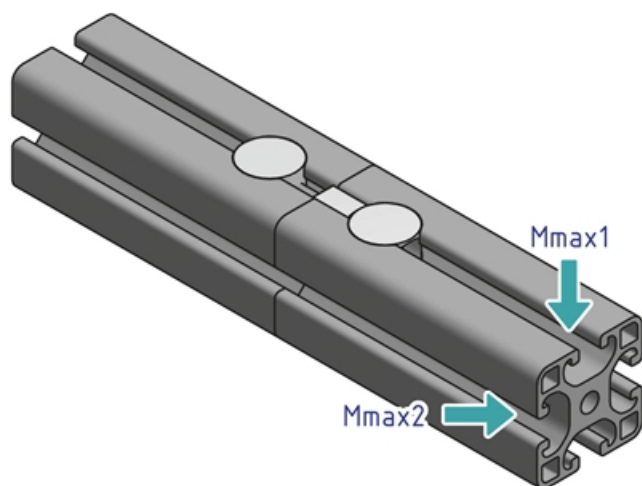
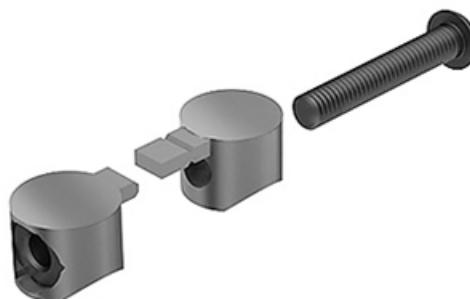
Universal Butt Connector

Links the face ends of two aluminium profile from the same series. Supplied with mounting kit.

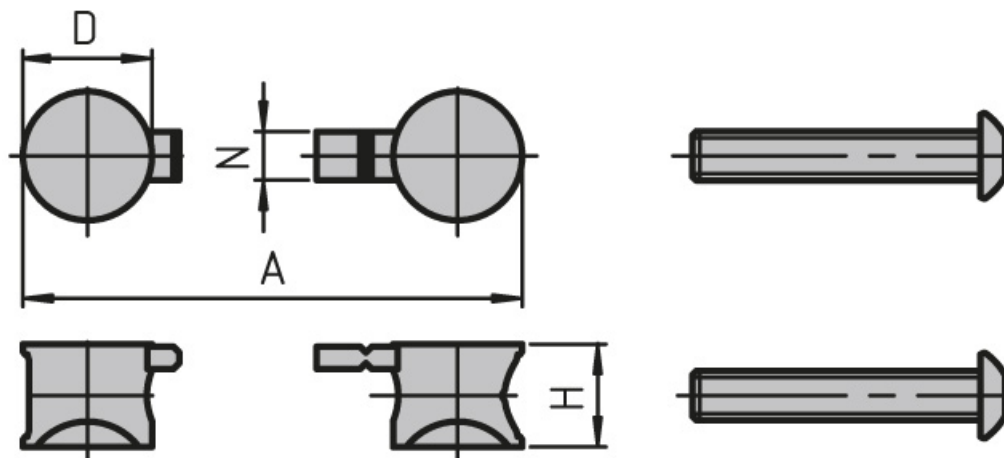
Material Connector: Galvanised die-cast zinc

System: 30 - Slot 6; 20 - Slot 5

Type: Fasteners



General Data



Designation	Description	System	A	D	H
PV4030	Universal connector set (2 universal connectors, 1 M4 × 20 screw (DIN912), 1 M4 nut (DIN934))	20 - Slot 5	32	11.8	8.5
PV3016	Universal connector set (2 universal connectors, 1 M6 × 35 screw (ISO7380), 1 M6 nut (DIN934))	30 - Slot 6	46	15.7	12.5

Designation	Fmax (N)	Mmax (Nm)	Mmax1 (Nm)	Mmax2 (Nm)
PV4030	-	-	20	20
PV3016	50	50	50	50

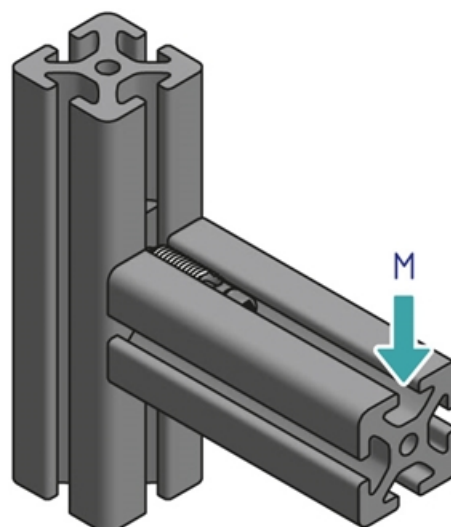
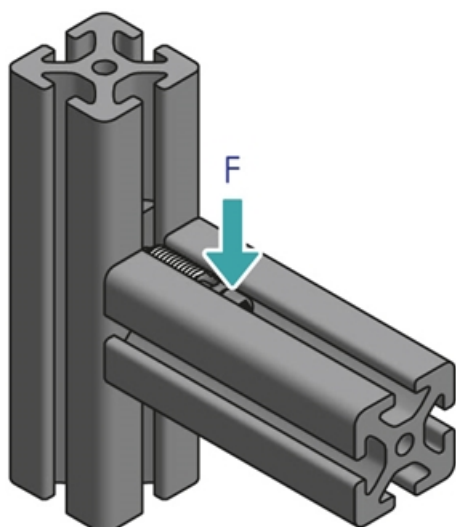
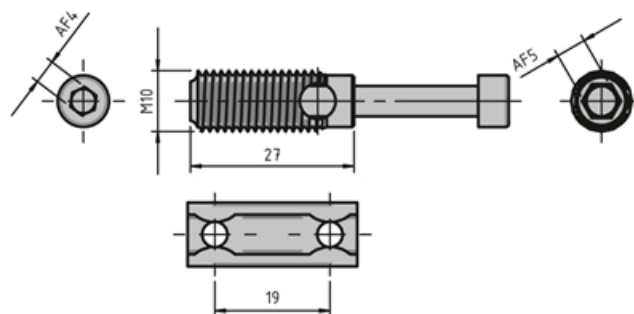
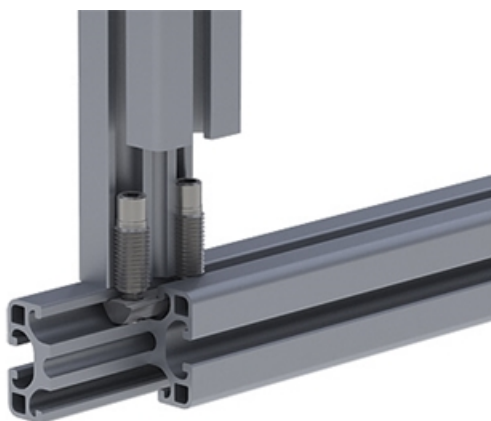
Automatic Combination Connector

Quickly and reliably links two aluminium profiles without having to modify them.

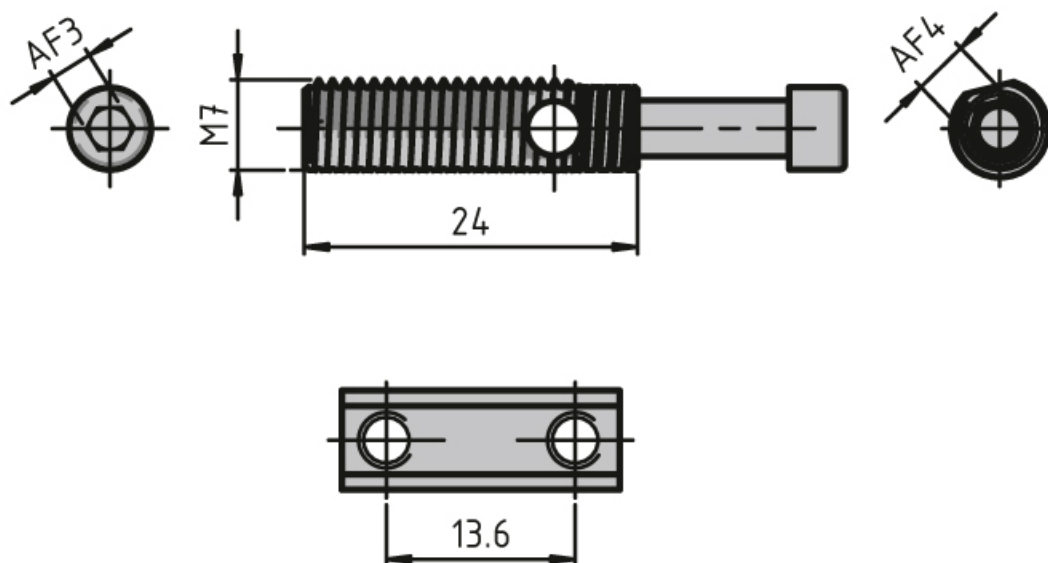
Material: Galvanised steel

System: 30 - Slot 6; 20 - Slot 5

Type: Fasteners



General Data



Designation	Description	System	M (Nm)	F (N)
PV1204	Automatic combination connector 20 including slot nut with guide step	20 - Slot 5	6	350
PV1205	Automatic combination connector 30 including slot nut with guide step	30 - Slot 6	35	600

Cube Connector

Links up to three aluminium profiles at a right angle, use the caps to cover the holes.

Cube connector material: Die-cast aluminium

Cap material: Plastic (PE)

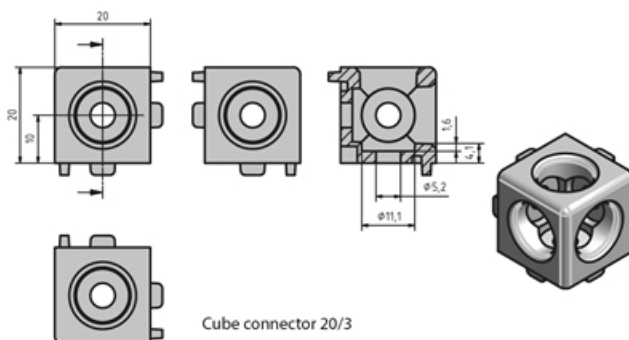
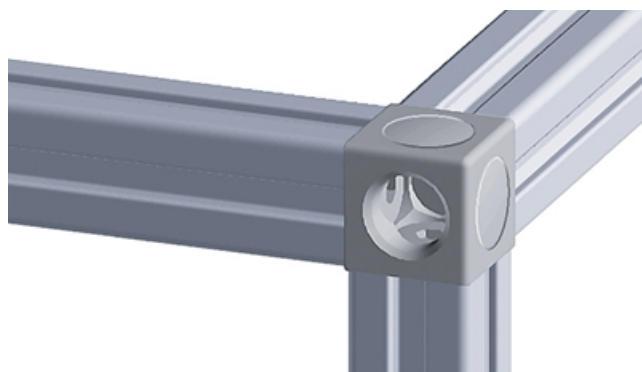
Mounting material WV20: M5 × 14 pan head screw (ISO7380)

Mounting material WV40: M8 × 25 countersunk screw (DIN7991)

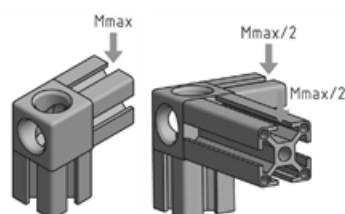
Note: The caps in the sets are not ESD-ready.

System: 20 - Slot 5

Type: Fasteners

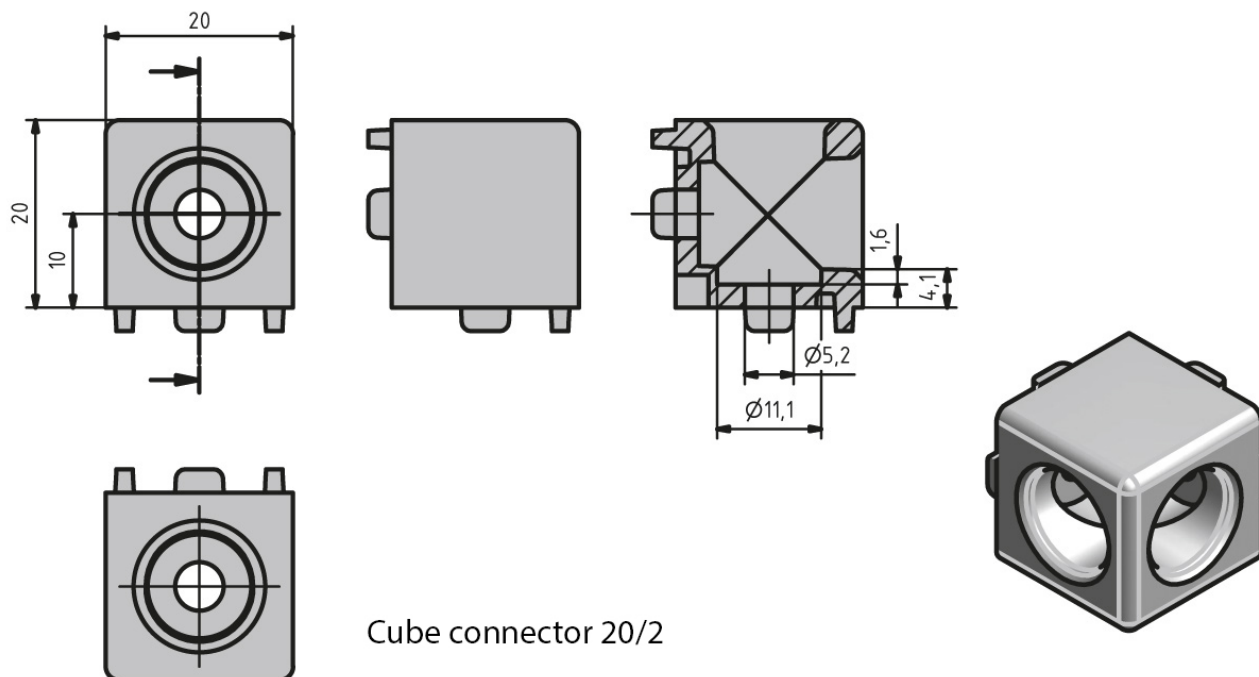


Cube connector 20 loads



Type	Mmax (Nm)	Mmax/2 (Nm)
Cube connector 20/2	15	
Cube connector 20/3		18

General Data



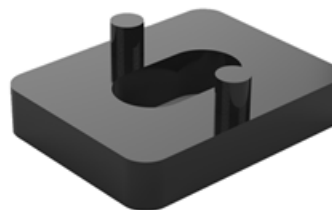
Cube connector 20/2

Designation	Description	System	ESD
PV1224	Cube connector 20/2, uncoated aluminium, 2 black PE caps and mounting kit included	20 - Slot 5	Yes
PV1225	Cube connector 20/2, silver coated aluminium, 2 silver PE caps and mounting kit included	20 - Slot 5	-
PV1226	Cube connector 20/3, uncoated aluminium, 3 black PE caps and mounting kit included	20 - Slot 5	Yes
PV1227	Cube connector 20/3, silver coated aluminium, 3 silver PE caps and mounting kit included	20 - Slot 5	-
PA1211	Black cap for cube connector 20	20 - Slot 5	-
PA1212	Silver cap for cube connector 20	20 - Slot 5	-

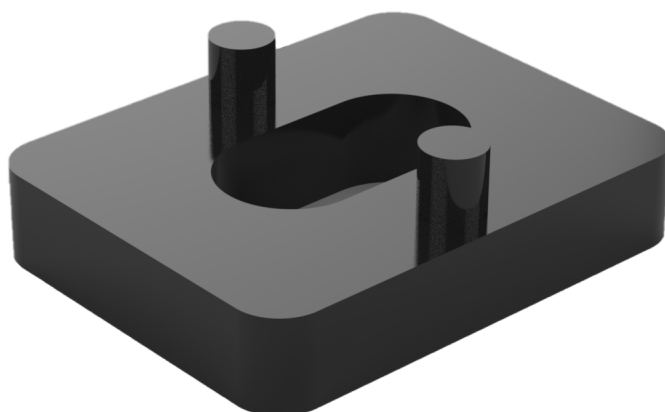
Uniblock Spacer

System: 30 - Slot 6; 20 - Slot 5

Type: Fixing Blocks/Fastening Elements



General Data



Designation	Description	System
PZ5300	Uniblock 14 5 spacer 1,0 mm	20 - Slot 5
PZ5301	Uniblock 14 5 spacer 2,0 mm	20 - Slot 5
PZ5302	Uniblock 14 5 spacer 3,0 mm	20 - Slot 5
PZ5303	Uniblock 14 5 spacer 4,0 mm	20 - Slot 5
PZ5304	Uniblock 18 6 spacer 2,0 mm	30 - Slot 6
PZ5305	Uniblock 18 6 spacer 3,0 mm	30 - Slot 6
PZ5306	Uniblock 18 6 spacer 5,0 mm	30 - Slot 6

Clamping Pad

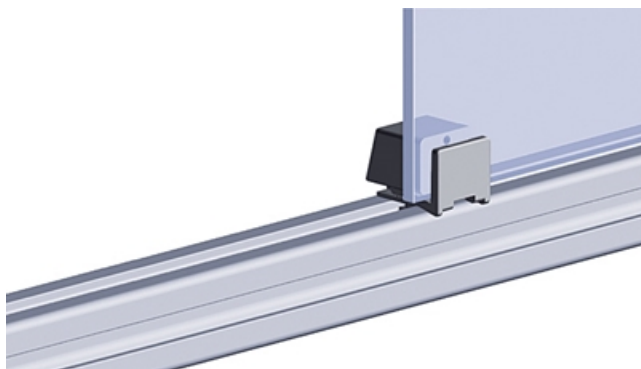
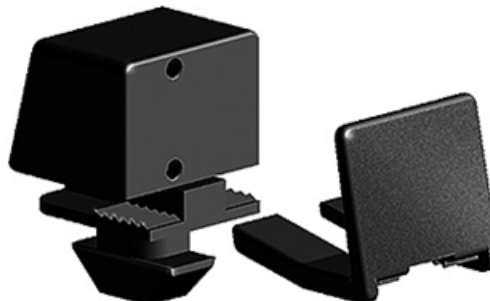
For fastening surface elements to aluminium profiles without tools.

Material: Plastic (PA), fibreglass-reinforced

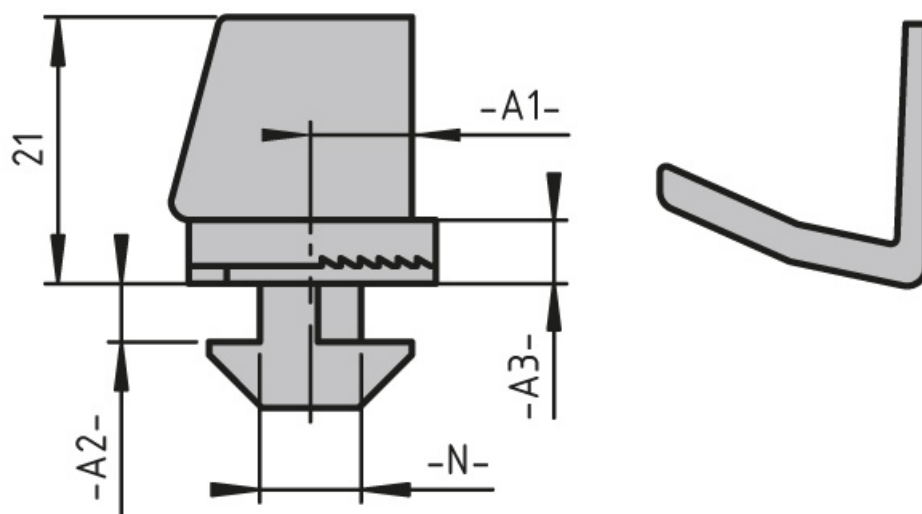
Clamping width: 1-9 mm surface elements

System: 30 - Slot 6; 20 - Slot 5

Type: Fixing Blocks/Fastening Elements



General Data



Designation	Description	System	Colour	A1	A2
PZ4115	Clamping pad	20 - Slot 5	Black	4	1.6
PZ5064	2 mm clamping pad spacer	20 - Slot 5	Black	-	-
PZ5065	3 mm clamping pad spacer	20 - Slot 5	Black	-	-
PZ5066	4 mm clamping pad spacer	20 - Slot 5	Black	-	-
PZ5067	Clamping pad	20 - Slot 5	traffic grey, similar to RAL7042	4	1.6
PZ3165	Clamping pad	30 - Slot 6	Black	7	2.7
PZ5068	Clamping pad	30 - Slot 6	traffic grey, similar to RAL7042	7	2.7

Designation	A3
PZ4115	3.6
PZ5064	-
PZ5065	-
PZ5066	-
PZ5067	3.6
PZ3165	4.5
PZ5068	4.5

Panel Bracket

Fastens the surface element on the profile without further changes.

Tightening the clamping screw fastens the collet to both the surface element and the profile.

Do not use for grids or wave grids.

For 2-9 mm surface elements.

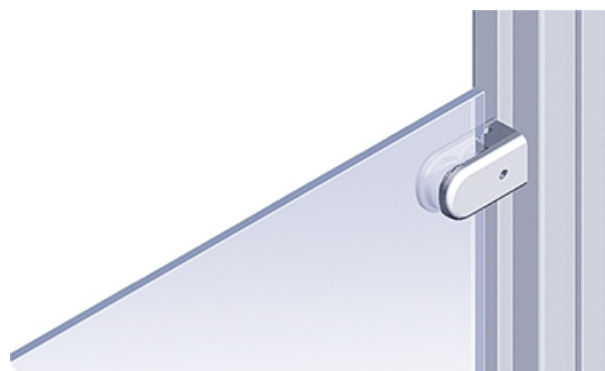
Material: Die-cast zinc, aluminium coloured powder coat

Set: 1 panel bracket, M5 × 16 screw,

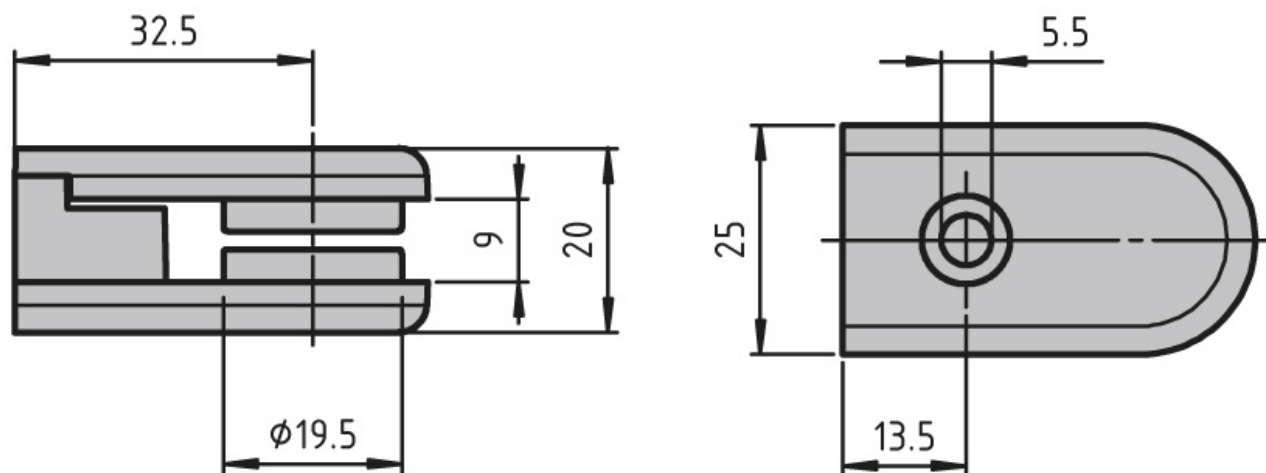
5 rubber pads for 2–9 mm plates

System: 40 - Slot 8; 30 - Slot 6; 20 - Slot 5

Type: Fixing Blocks/Fastening Elements



General Data



Designation	Description
PZ5069	Panel bracket

Earthing Strap

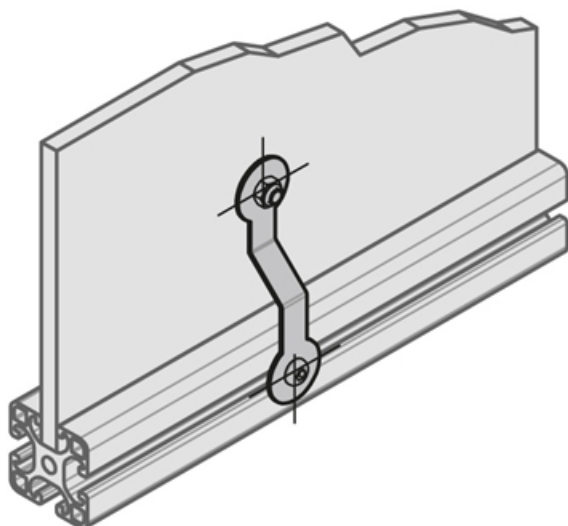
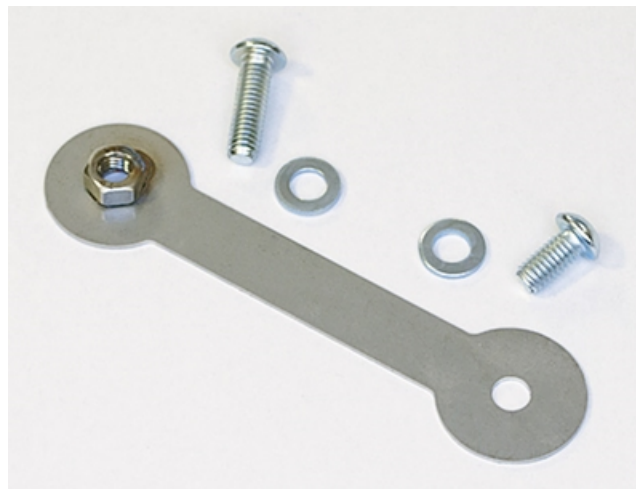
Creates a conductive link between surface elements and brace profiles.

Material: Stainless strip steel

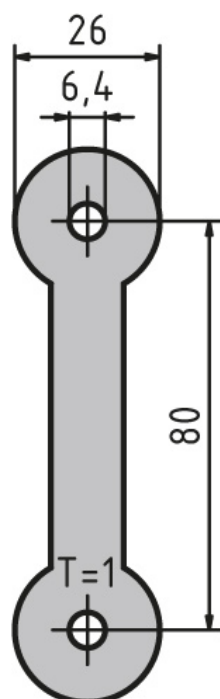
Package includes: 1× M6 × 20 fillister head screw (DIN7380), galvanised, 1× M6 × 12 fillister head screw (DIN7380), galvanised

System: 40 - Slot 8; 30 - Slot 6; 20 - Slot 5

Type: Fixing Blocks/Fastening Elements



General Data



Designation	Description
PZ5070	Earthing strap with welded-on nut