

## Corner Angle 20

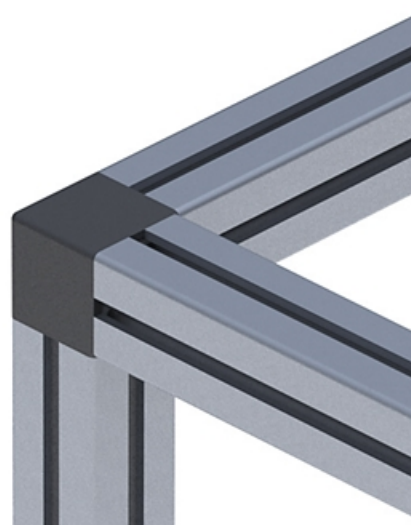
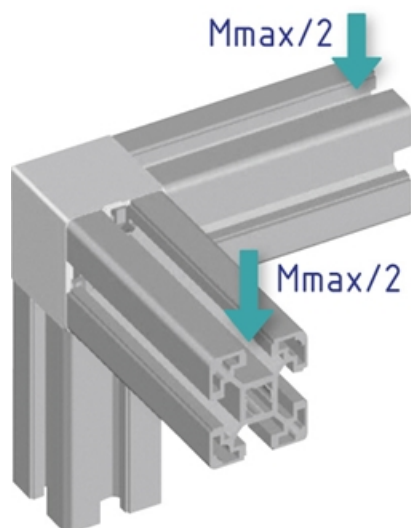
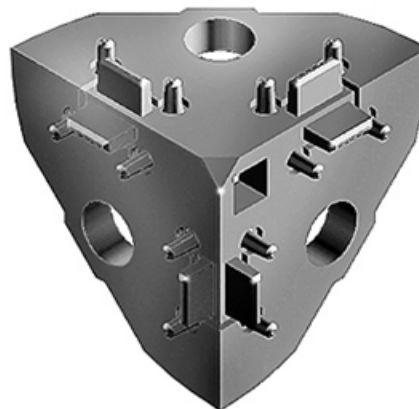
Right-angled links between up to three square or semi-circular profiles of the same cross section. Square or round caps for protection against injury and dirt.

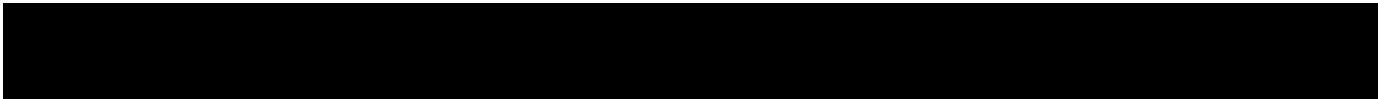
Material: Corner angle: Uncoated die-cast zinc  
Caps: plastic (PA).

Note: The caps in the sets are not ESD-ready.

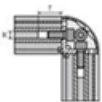
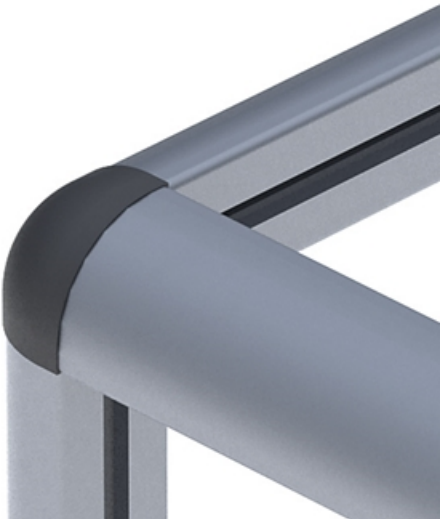
**System:** 20 - Slot 5

**Type:** Angles Brackets and Corners; Fasteners



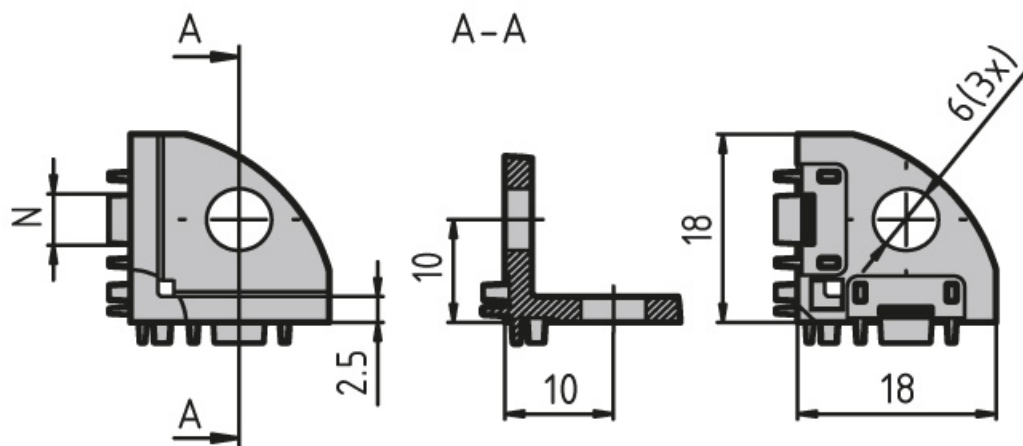


# Corner Angle 20



	5	6
Machining of corner angle	Profile 20x20	Profile 30x30
Thread (M)	M5	M5
Depth (T)	25 mm	25 mm

## General Data



Designation	Description	System	F (Nm)	ESD
<b>PZ5014</b>	Corner angle 20 including 3 M5 × 12 screws (ISO 7380)	20 - Slot 5	12	Yes
<b>PZ5015</b>	Corner angle 20 including 3 M5 × 12 screws (ISO 7380) and square black cap	20 - Slot 5	12	Yes
<b>PZ5016</b>	Corner angle 20 including 3 M5 × 12 screws (ISO 7380) and round black cap	20 - Slot 5	12	Yes
<b>PA1206</b>	Round black cap	20 - Slot 5	-	-
<b>PA1207</b>	Square black cap	20 - Slot 5	-	-