

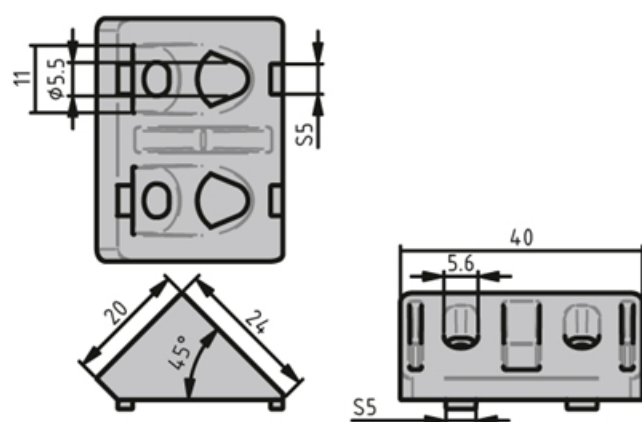
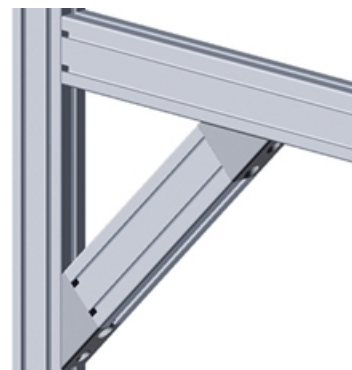
## Angle Joint

Easily links two aluminium profiles at a 45° angle using a M8 screw.

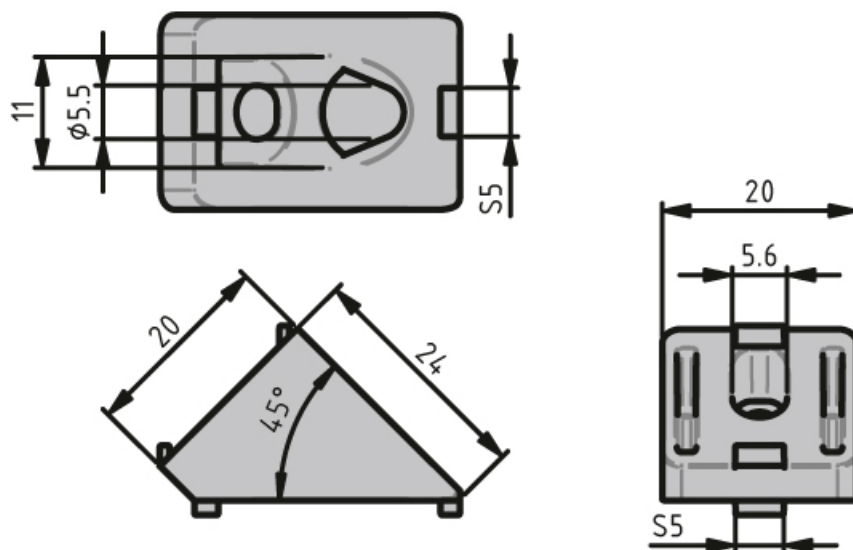
Note: To install the ESD-ready brackets, use a notched slot nut in order to make a conductive link.

**System:** 20 - Slot 5

**Type:** Angles Brackets and Corners; Fasteners



## General Data



Designation	Description	System	Material	ESD
PV1211	Angle joint 20 45°	20 - Slot 5	Uncoated die-cast zinc	Yes
PV1212	Angle joint 20 45°	20 - Slot 5	Aluminium coloured die-cast zinc	-
PV1213	Angle joint 40/20 45°	20 - Slot 5	Uncoated die-cast zinc	Yes
PV1214	Angle joint 40/20 45°	20 - Slot 5	Aluminium coloured die-cast zinc	-