

## Compact Door Lock

Easily and reliably locks doors and flaps.

Installs without drilling or other mechanical means.

Secured against disassembly when closed.

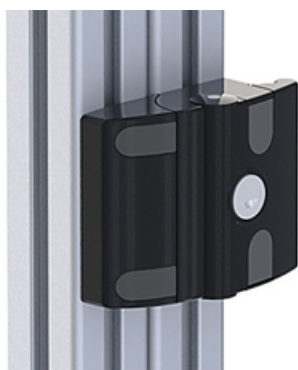
Material: Die-cast aluminium

Surface: Black powder coated

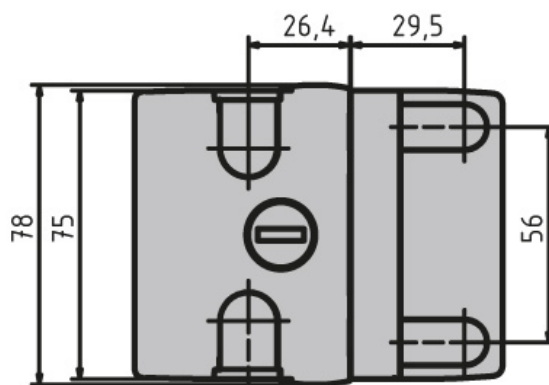
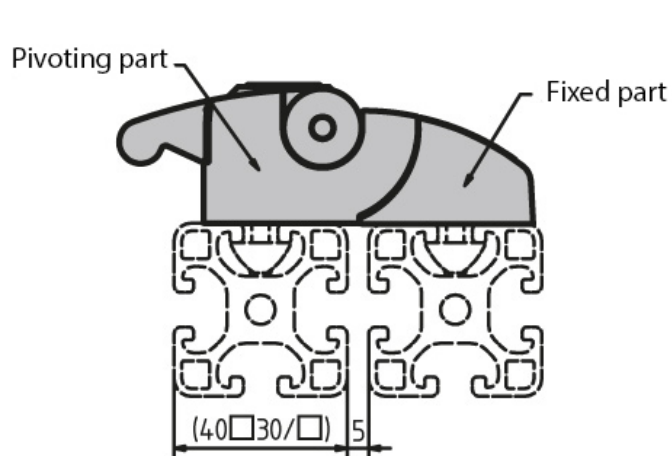
Extras: Upon request, the door locks are available with aluminium coloured powder coat.

**System:** 30 - Slot 6; 40 - Slot 8

**Type:** Door Latches & Interlocks



## General Data



Designation	Description
PZ1633	Keyed alike compact door lock
PZ5040	Individually keyed compact door lock