

## Emergency Door Lock Opener

Emergency release at the back of the Compact Catch Lock. Matches profiles 30,40.

Material: Base body and push-button: Plastic (PA6),  
fibreglass-reinforced

Unlocking bar: Steel

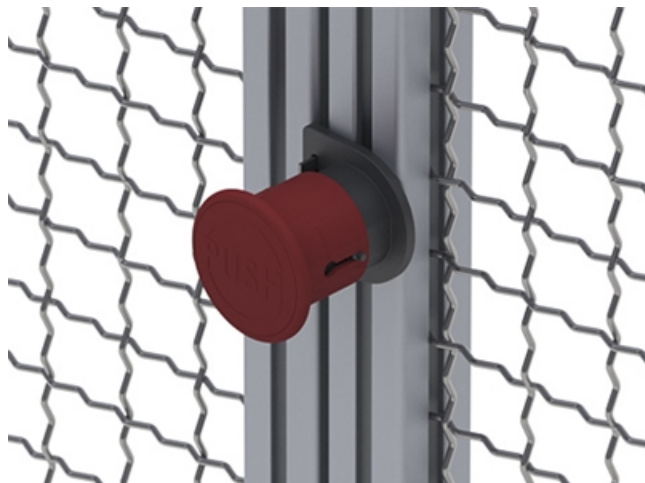
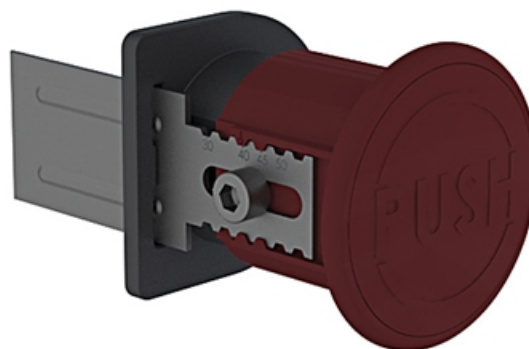
Colour: Base body: Black

Push-button: Red

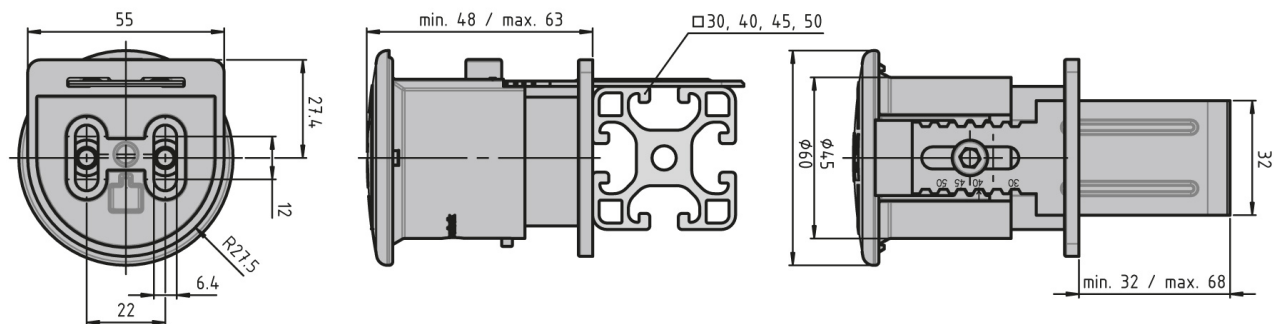
Mount: By two M6 × 20 cheese head screws (DIN 912) at the front

**System:** 40 - Slot 8; 30 - Slot 6

**Type:** Door Latches & Interlocks



# General Data



Designation	Description	Weight (g)
PZ5050	Emergency catch lock opener	110.8