

Central Fastener 40 S / SV

Application:

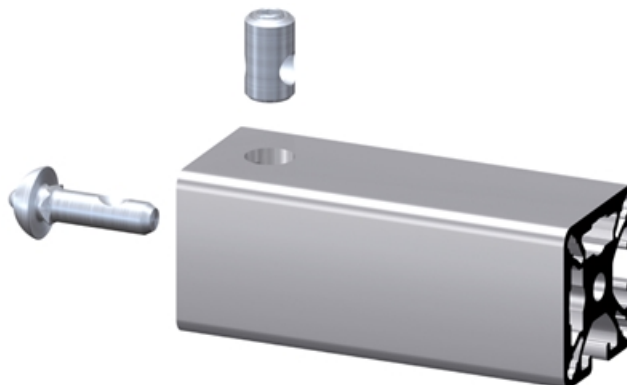
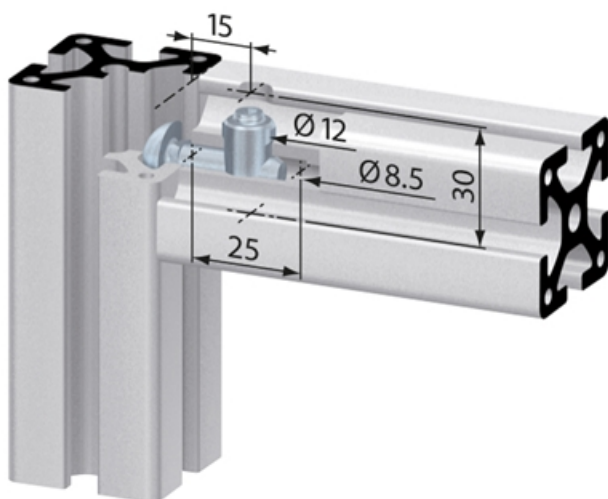
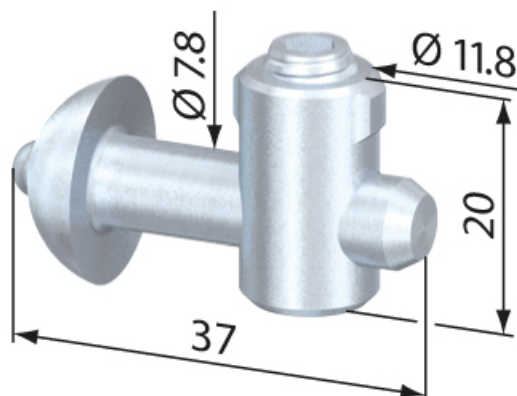
All-purpose universal fastener. The slide-in anchor is held in position in the profile groove by a spring-loaded ball in the opposing profile t-slot. The SV fasteners have an anti-twist feature. The SV ON fastener is to be used with closed profiles.

Assembly:

Bore hole for the barrel housing: $\varnothing 12$ mm, 15 mm from profile end, 30 mm deep. Bore for center hole on end of profile for anchor: $\varnothing 8.5$ mm, 25 mm deep.

System: 40 - Slot 8

Type: Fasteners



General Data

Designation	Description	System	Material	Weight (g)
SV1001V	Central fastener 40 S	40 - Slot 8	Steel, zinc-plated	28
SV1211V	Central fastener 40 SV	40 - Slot 8	Steel, zinc-plated	28
SV1212V	Central fastener 40 SV ON	40 - Slot 8	Steel, zinc-plated	27
SV1350V	Central fastener 40 SV VA	40 - Slot 8	Stainless steel	30