

System Plates

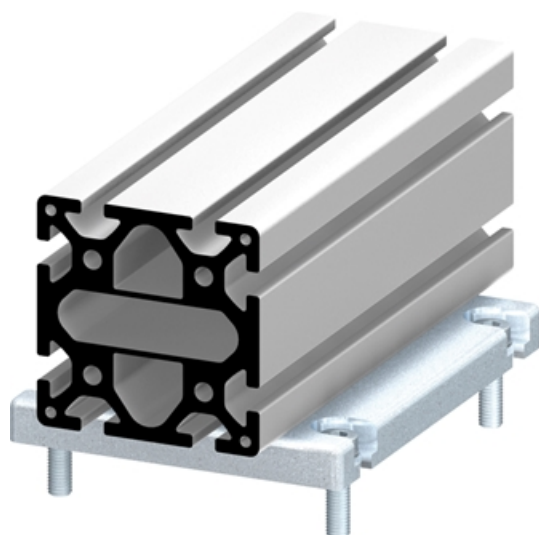
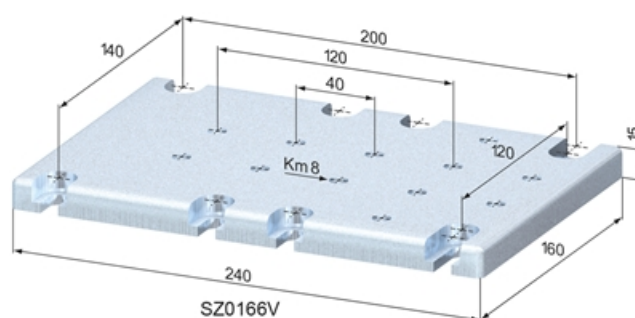
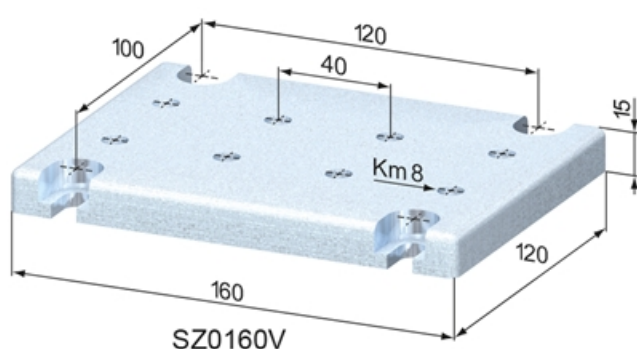
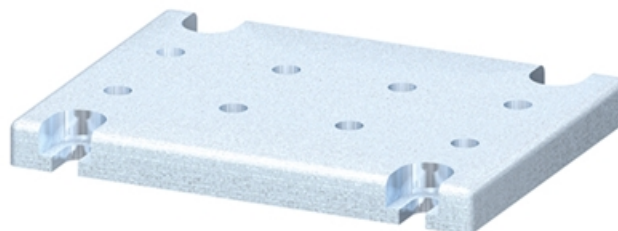
Application:

For fixing profile structures onto countertops.

Material: Steel, zinc-plated

System: 40 - Slot 8

Type: Bearing Plates & Adjusting Elements



General Data

Designation	Description	System	Weight (kg)
SZ0160V	System Plate 120 x 160 Ø 9, zinc-plated	40 - Slot 8	2
SZ0166V	System Plate 160 x 240 Ø 9, zinc-plated	40 - Slot 8	4