

## Protection Wall Handle

### Application:

Handle for fixing to wire mesh panels.

### Supply:

1x SZ0820S handle PA

2x fixing plate I, handle

2x fixing plate II, handle

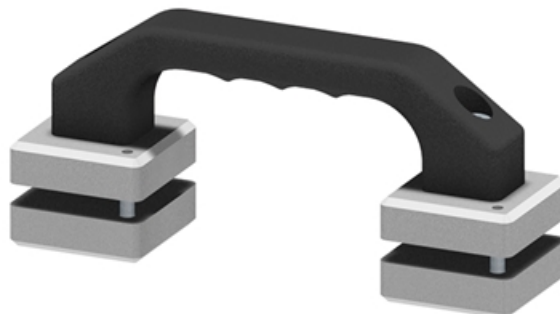
2x cap head screw M 8 x 30

4x cap head screw M 5 x 30

**Material:** PA, black. Fixing plates in natural anodized aluminum.

**System:** 40 - Slot 8

**Type:** Handles



## General Data

Designation	System
<b>SZ8015N</b>	40 - Slot 8