

## System Glider

### Application:

Linear guidance of one profile against another. Used for sliding doors or windows. The system glider is locked into the profile t-slot via M 4 grub screws. The distance between the profiles amounts to 2.1 mm.

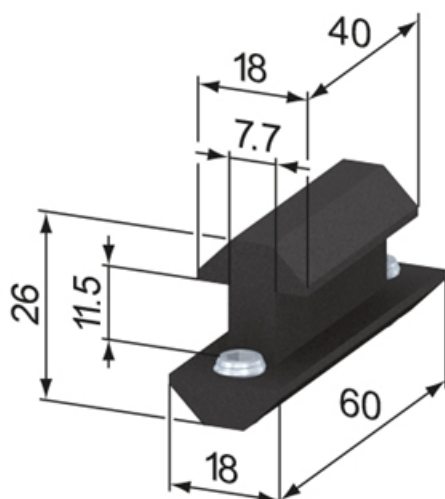
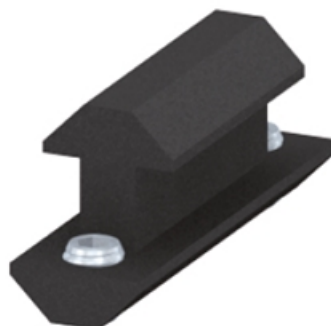
### Supply:

2x grub screw M 8 x 8, zinc-plated

**Material:** POM, black

**System:** 40 - Slot 8

**Type:** System Gliders and Rollers



## General Data

Designation	Description	System	Weight (g)
SZ1300S	System Glider 40 / 60	40 - Slot 8	22