

## Safety Interlocks

### Application:

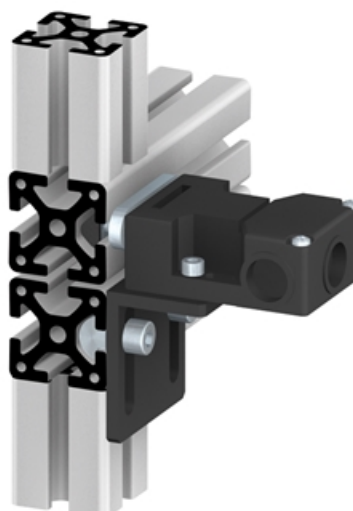
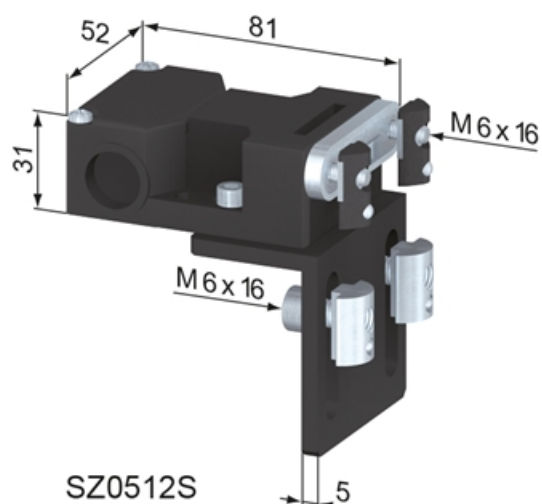
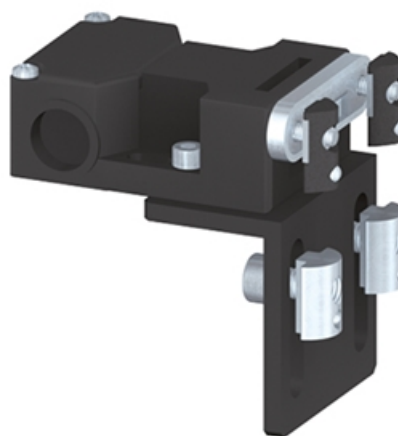
For electronic monitoring of doors. Can be mounted on the left or right side. The closing force amounts to 15 N, the holding force 5 N.

### Supply:

Complete with fixing set.

**System:** 40 - Slot 8

**Type:** Door Latches & Interlocks



## General Data

Designation	Description	System	Weight (g)
<b>SZ0510S</b>	Safety Interlock, with one contact	40 - Slot 8	260
<b>SZ0512S</b>	Safety Interlock, with two contacts	40 - Slot 8	260