

Standard Roller Fixed TR---. 0200

- Lubricated for lifetime
- Optional from size 60 relubricable.

Use profile UP---.0700. Profile UP---.0730 for TR050.0200

Fixing square element BQ---.1000

Rectangular fixing element BR---.1100

Note! Dynamic load capacity refers to bearing.

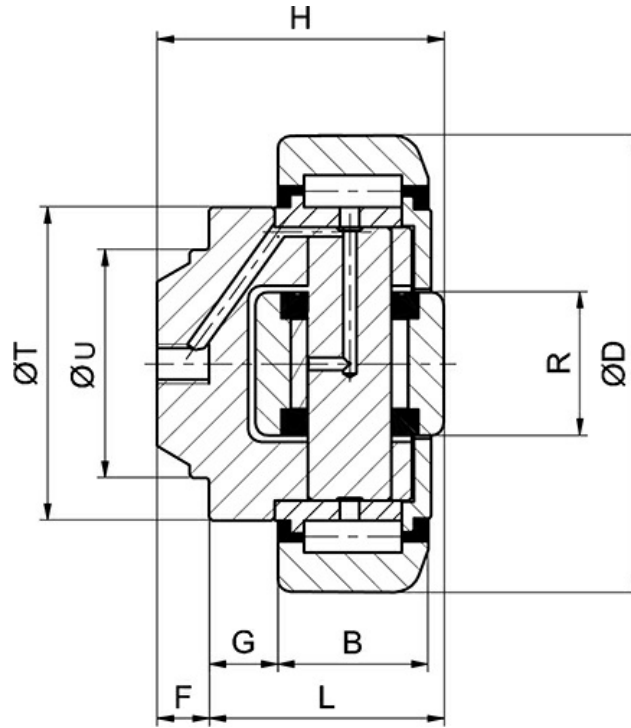
Dimensions in mm.



Variant Data

Designation	Dynamic Load Capacity Radial	Dynamic Load Capacity Axial	System Load Capacity Radial	System Load Capacity Axial
TR050.0200	24500 N	7500 N	5300 N	2000 N
TR060.0200	31000 N	11000 N	8870 N	2950 N
TR070.0200	45500 N	13000 N	11400 N	3150 N
TR080.0200	48000 N	18000 N	12870 N	5000 N
TR090.0200	68000 N	23000 N	20370 N	5100 N
TR110.0200	81000 N	31000 N	24060 N	8900 N
TR120.0200	110000 N	43000 N	33440 N	9800 N
TR150.0200	151000 N	68000 N	51940 N	17400 N
TR180.0200	207000 N	73000 N	76000 N	23000 N

Variant Measurements



Designation	B	D	F	G	H	L	R	T	U
TR050.0200	17	52,50	6	5	33	27	16	40	30
TR060.0200	20	62,50	7	9	37,50	30,50	20	42	30
TR070.0200	23	70,10	8	10,50	44	36	22	48	35
TR080.0200	23	77,70	11,50	10,50	48	36,50	24	54	40
TR090.0200	30	88,40	13	10,50	57	44	26	59	45
TR110.0200	31	107,70	14	20	69	55	34	71	60
TR120.0200	37	123	16,30	14	72,30	56	40	80	60
TR150.0200	45	149	20	8,50	78,50	58,50	50	103	60
TR180.0200	57,30	180	19,40	12,50	95,70	76,30	60	124	100