

## Standard Roller TR---.0300

- Lubricated for lifetime

Use profile UP---.0700

Fixing square element BQ---.1000

Rectangular fixing element BR---.1100

Note! Dynamic load capacity refers to bearing.

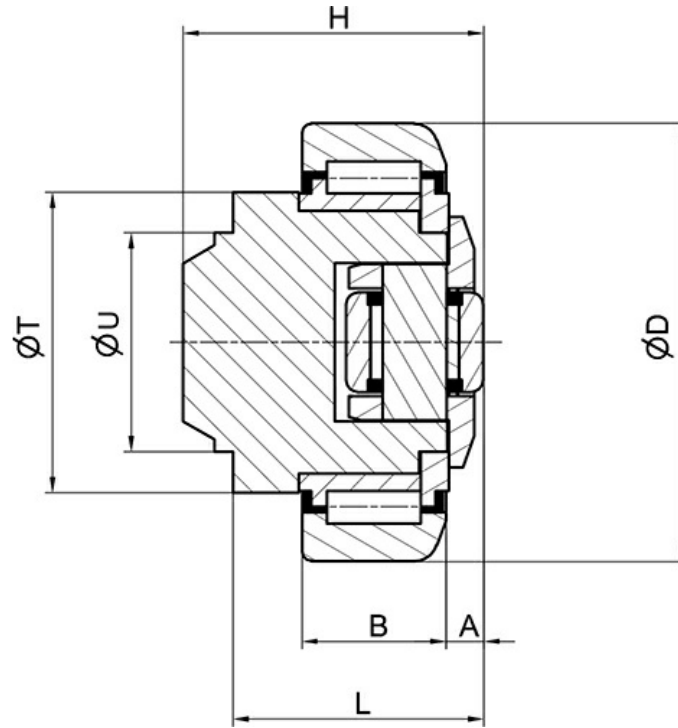
Dimensions in mm.



## Variant Data

Designation	Dynamic Load Capacity Radial	Dynamic Load Capacity Axial	System Load Capacity Radial	System Load Capacity Axial
TR060.0300	31000 N	8000 N	8870 N	2950 N
TR070.0300	45500 N	13000 N	11400 N	3150 N
TR080.0300	48000 N	14000 N	12870 N	5000 N
TR090.0300	68000 N	15000 N	20370 N	5100 N
TR110.0300	81000 N	31000 N	24060 N	8900 N
TR120.0300	110000 N	31000 N	33440 N	9800 N
TR150.0300	151000 N	68000 N	51940 N	17400 N

## Variant Measurements



Designation	A	B	D	H	L	T	U
TR060.0300	5,50	20	62,50	43	33	42	30
TR070.0300	6,50	23	70,10	48	40	48	35
TR080.0300	7	23	77,70	50,50	39,50	54	40
TR090.0300	7	30	88,40	61	48	59	45
TR110.0300	8	31	107,70	69	55	71	60
TR120.0300	8	37	123	75,80	59,50	80	60
TR150.0300	15	45	149	89	69	103	60